

2005 | KOUNTRY STAR DIESEL PUSHER
by Newmar



STARLIGHT, STARBRIGHT.
DREAMS COME TRUE

IF YOU'VE EVER WISHED FOR A
MOTORHOME THAT PROVIDES A HIGHER
STANDARD OF TRAVEL LIVING AT A PRICE
THAT ACTUALLY LETS YOU ENJOY IT, WISH
NO MORE. THE KOUNTRY STAR DIESEL
PUSHER MOTORHOME IS JUST WHAT
YOU'VE BEEN DREAMING OF.

TAKE A CLOSE LOOK AT ITS CRISP,
CLEAN STYLING, INSIDE AND OUT...

ITS EXCEPTIONAL POWER AND
PERFORMANCE... ITS THOUGHTFULLY
DESIGNED FLOORPLANS... AND ITS
EXCEPTIONAL, COMFORT-ENHANCING
AMENITIES. YOU'LL KNOW IT'S LIGHT-
YEARS BEYOND ANYTHING ELSE IN ITS CLASS.

CLEARLY, WHEN YOU WISH ON A KOUNTRY
STAR, YOUR DREAMS DO COME TRUE.







Overhead Cabinets

Slideout

Decorative Molding

Window Treatments

FIND ALL YOUR DREAMS FULFILLED

Slideout

Kountry Star's living area slideout significantly expands your living options and your comfort—which is what you'd expect from Newmar, the pioneer in RV slideouts.

Decorative Molding

Recalling the rich architectural detail of fine traditional homes, the trimwork surrounding the slideout opening features decorative molding accents.

Overhead Cabinets

Storage space is always at a premium, especially in the living room, so these overhead cabinets can really come in handy.

Window Treatments

Kountry Star's standard large-scale double-pane windows are offset by beautiful interior treatments, including elegant lambrequins and pleated day/night shades.



3908/Mint Mist



ABOVE: In the mood for a little entertainment? Switch on your Sony® 24-inch flatscreen color TV with a DVD, VCR and AM/FM stereo combo unit, Surround Sound and a subwoofer for the ultimate experience. The TV is handsomely mounted in its own overhead cabinet.

LEFT: Talk about convenience: This plush swivel/recliner chair is positioned next to a wall-mounted flip-up side table.

BELOW: Our optional Hide-a-Bed sofa extends to provide extra sleeping accommodations and features a super-comfortable air mattress.



3354/Graphite

Innovative Concept #47:
Hide-a-Bed



Microwave Oven

Generous Cabinets

Three-Burner Range

Countertops

SATISFY YOUR HUNGER FOR LIVING

Countertops

Countertop space is generous and made of solid-surface material. Note the pullout cutting board next to the range and the flip-up countertop extension by the sink.

Three-Burner Range

Reliable piezo ignition, sealed burners for easy cleanup and a solid-surface bi-fold cover that closes flush with the countertop distinguish the Kountry Star's three-burner range.

Microwave Oven

The 30-inch convection microwave oven really increases your cooking options.

Generous Cabinets

Kitchen storage space is very generous in the Kountry Star. These optional Ericsburg Cherry cabinets feature hardwood, single-arch raised-panel doors.



3354/Graphite

ABOVE: The undermounted acrylic sink features flush sink covers and a pullout faucet.

RIGHT: This optional Norcold® four-door refrigerator has a built-in icemaker and water dispenser for quick convenience. The doors have a hardwood raised-panel front for that classic built-in look.

BELOW: The optional combination desk/flip-up dinette, available on most floorplans, comes with two plushly upholstered freestanding sidechairs and two upholstered folding chairs, providing a pleasant room setting for meals, conversation, letter-writing or gaming.

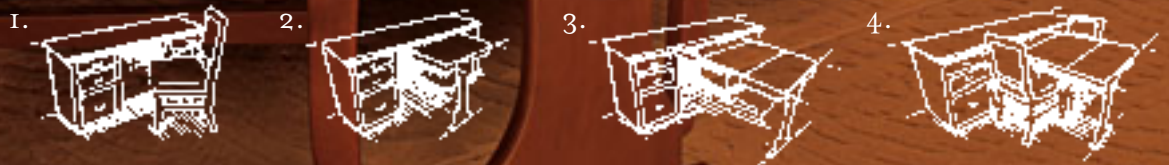


3720/Deco Blue



3354/Graphite

Innovative Concept #17:
Desk with Dinette



Deep Wardrobe

Overhead Cabinets

Reading Lights

Queen Bed

TO SLEEP IS TO DREAM

Queen Bed

The Kountry Star bedroom offers a queen-sized bed enhanced with a quilted headboard and bedspread, a reverse sham and an accent pillow. The bed lifts up, giving you access to a spacious storage area underneath.

Reading Lights

Individual reading lights are mounted above the headboard.

Overhead Cabinets

Convenient cabinets above the headboard let you stow more of your favorite clothing, bedding or personal items. The end cabinets have etched-mirror door panels.

Deep Wardrobe

The deep wardrobe with its compartmentalized shelving not only lets you stow more but lets you organize your belongings much more efficiently.



3907/Flax

ABOVE: A standard color TV is built into the cabinetry, high enough for easy viewing from bed.

RIGHT: In addition to offering plenty of cabinet space, the bathroom features an easy-cleaning solid-surface countertop with an integrated sink, a single-lever faucet and a tub/shower surround with a shower door.

BELOW: Lots of deep drawers and cabinets—including storage drawers beneath the bedroom window—let you bring what you need for the long haul.



3720/Deco Blue



3910/Twilight Plum



A



B

A. The Kountry Star cab is truly the "Driver's Command Center." All dashboard gauges and controls are well within view and reach. Other top features include a tilt-and-telescopic steering wheel and a color rearview back-up monitor.

B. Ultraleather cab seating features lumbar support, Ergo-Flex arms and six-way power adjustment to keep you comfortable mile after mile.

C. This AM/FM dash stereo features an optional multi-disc CD player and SIRIUS Satellite Radio capability.



C

D. The exterior entertainment center includes a 22-inch flatscreen LCD color TV mounted on a swing-out arm, and Sony® AM/FM stereo CD player with two speakers, all contained in a separate compartment.

E. The rearview convex exterior mirrors feature remote control and defrost.

F. The expansive basement pass-through compartment is not only lighted but comes with optional pullout storage trays.

G. The newly redesigned end cap creates a pleasing, unified exterior look.

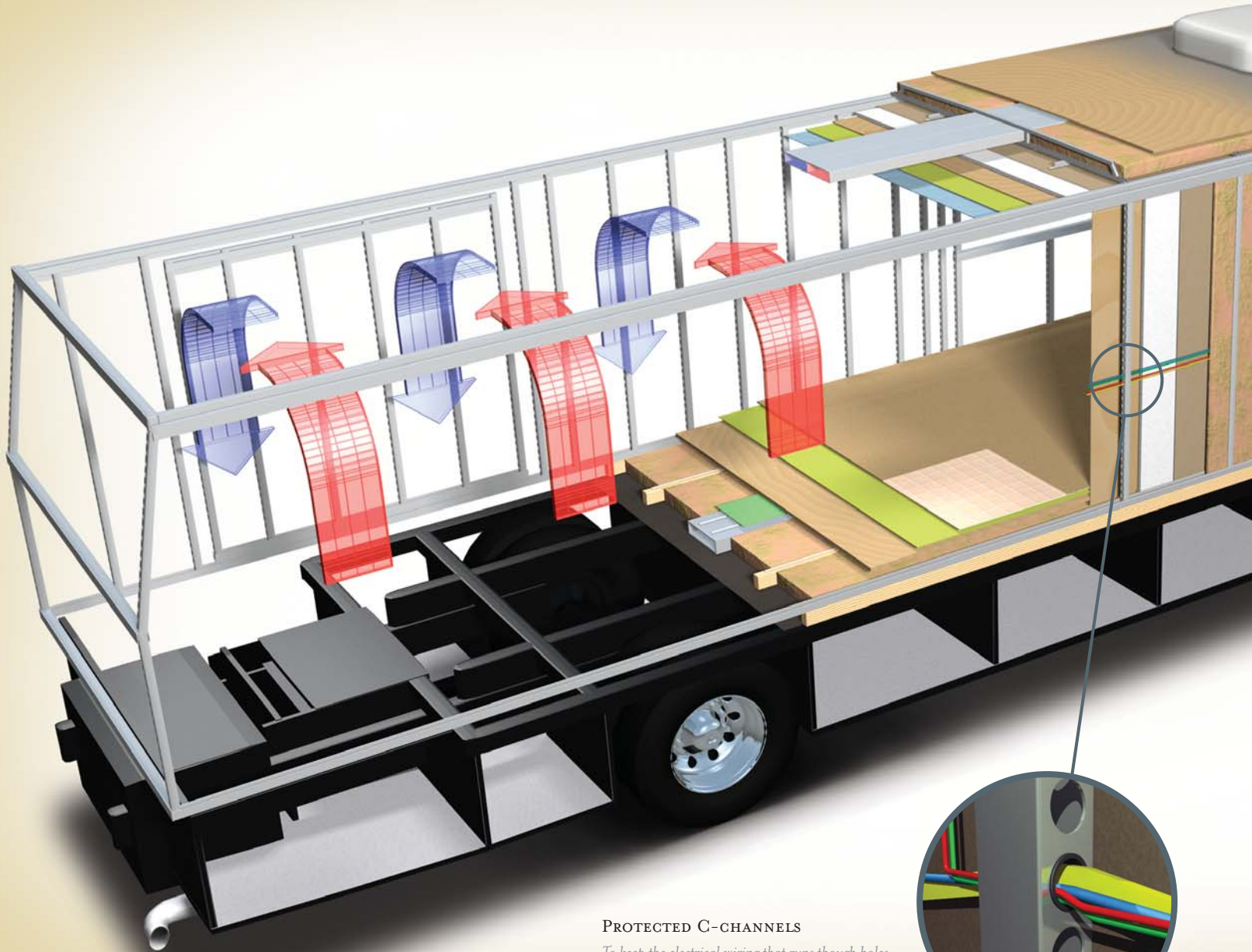
H. The Kountry Star's 7.5 kW Guardian Diesel Generator gives you all the power you'll need. It is located in a front pullout compartment for easy access.



THE NEWMAR KOUNTRY KLUB

As a Newmar owner, you qualify for membership in the Newmar Kountry Klub. Join your local chapter, and just look at the perks you'll enjoy: friendship, fun and adventure with other Newmar owners • rallies and caravans • special RV show events • discounts on RV services • a free monthly Klub magazine • Klub merchandise. And that's just for starters.

Join today. Call 877.639.5582, toll-free, or visit the Kountry Klub section of newmarcorp.com.



PROTECTED C-CHANNELS

To keep the electrical wiring that runs through holes in the aluminum-frame C-channels from chafing, each hole is ringed with a rubber grommet.

NOTHING ENDURES LIKE A NEWMAR

Your Kountry Star Diesel Pusher Motorhome is built to go the distance. And for good reason: It's assembled on the same production line, to the same exacting standards and with the same meticulous care, as all Newmar motorhomes. It also reflects Newmar's long history of product innovation and industry "firsts." For us, this is a matter of pride. And tradition. Of taking personal responsibility and building a product we ourselves would want to own.

For the third year in a row, Newmar has won RVDA's Quality Circle Award, given in accordance with the results of an annual RV dealer satisfaction survey. The survey asks RV dealers to evaluate manufacturers' performance in four major categories: Sales Support, Product Competitiveness, Service and Warranty Support. We are honored to receive this award, of course. It tells us that our efforts on behalf of our dealers and customers are appreciated. And we will continue working to keep their trust.





16" ON-CENTER FRAMING

Just like a fine site-built residential home, your Newmar home is framed 16 inches on center, which allows the best placement of outlets, switches and other components.

SIKAFLEX®

Sikaflex elastic adhesive is one of the strongest adhesives on the market today. It also serves as a sealant against air and water. And it helps dampen both sound and vibration.



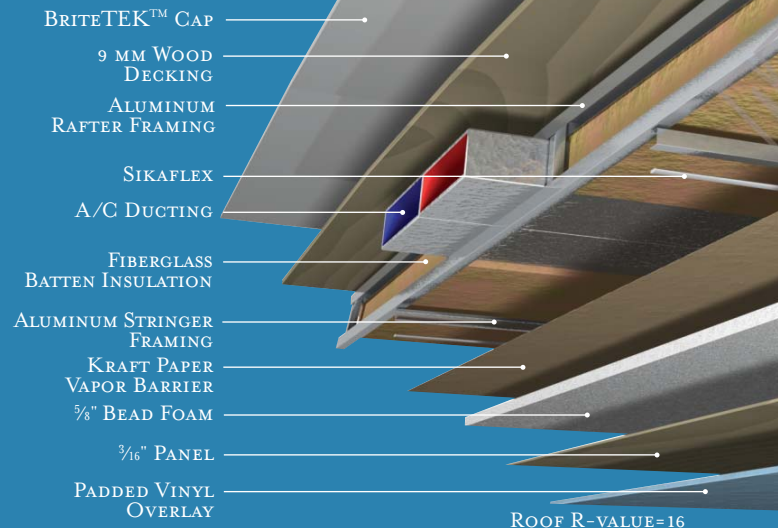
**TOTAL COMFORT™
NEWMAR CENTRAL AIR CONDITIONING**

Newmar's Total Comfort Central Air Conditioning system—standard with every Newmar RV—is just like those found in most site-built homes. It's actually two separate, fully ducted systems: one to distribute incoming cool air, the other to quickly and effectively remove warm air from every living area.

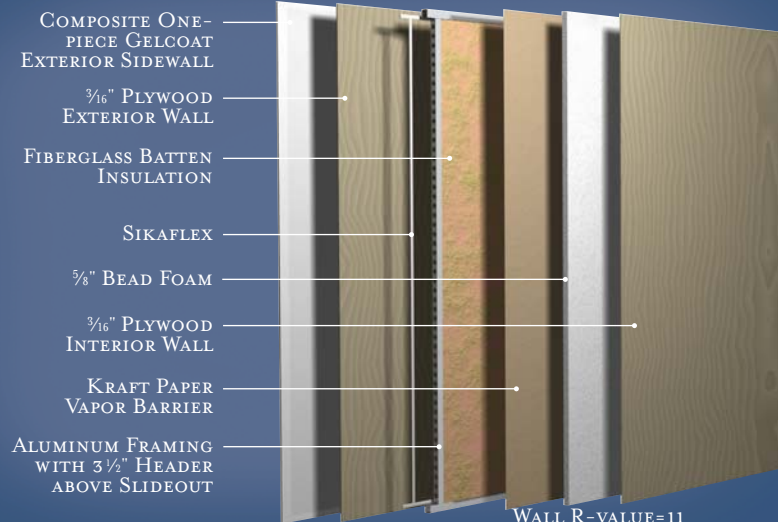
NEWMAR FREEDOM WARRANTY™

As proof of our commitment to you, we at Newmar back every Kountry Star Diesel Pusher Motorhome we make with our industry-leading three-year/50,000-mile limited warranty: The Newmar Freedom Warranty.* Ask your dealer for details. Coverage this comprehensive is really liberating.

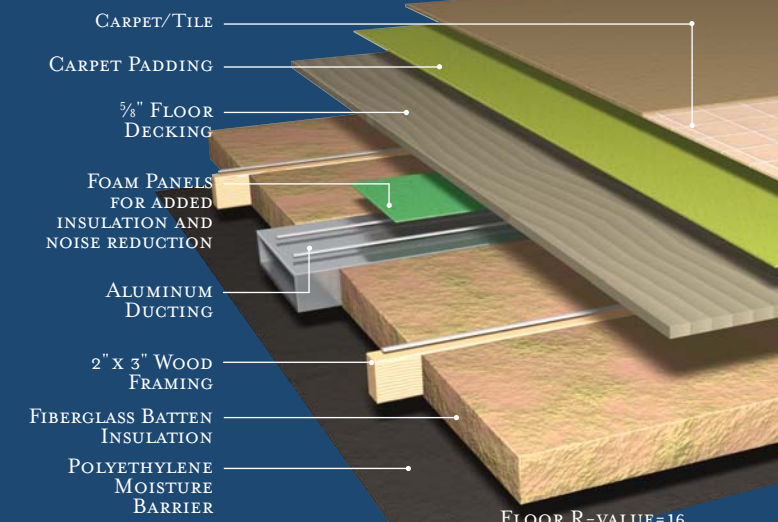
* Please see a Newmar dealer for a copy of the complete terms of the Freedom Warranty.



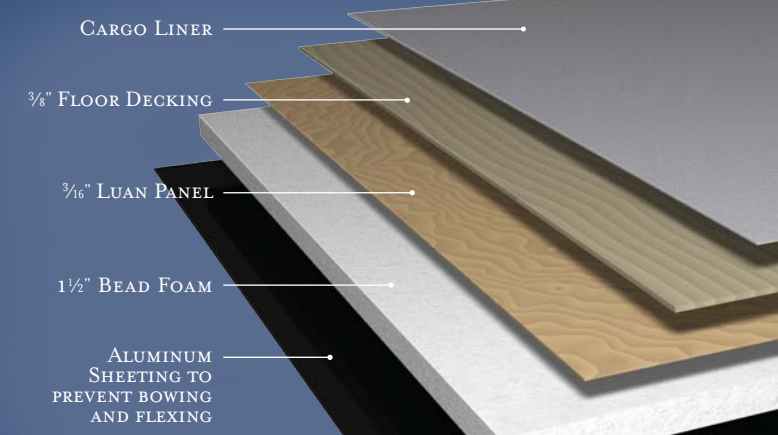
ROOF R-VALUE=16



WALL R-VALUE=11



FLOOR R-VALUE=16



BASEMENT R-VALUE=4

INTERIOR & EXTERIOR COLOR OPTIONS



GRAPHITE



MINT MIST



TWILIGHT PLUM



DECO BLUE



FLAX



Oak (Standard)
Oak Hardwood



Coastal Cherry



Maple Cream
Summer Maple Hardwood



Ericzburg Cherry
Velvet Cherry Hardwood

Upper cabinet doors shown. Real woods will have variations in grain and color.
Natural wood products will darken over time.



SANDALWOOD



PALE GREEN



CRYSTAL BLUE



FULL-PAINT CHESTNUT



FULL-PAINT BRONZE



FULL-PAINT NIMBUS GREY

FULL-PAINT MASTERPIECE FINISH™

Newmar's Full-Paint Masterpiece Finish creates an exterior of stunning beauty and incredible endurance—a true work of art. As industry leaders in applying full body paint to motorhome coaches, we at Newmar are pleased to offer the Full-Paint Masterpiece Finish as a Kountry Star Diesel Pusher Motorhomes option.

DIAMOND SHIELD

Diamond Shield Front Paint Protection Film is standard on all Kountry Star Diesel Pusher Motorhomes with Full-Paint Masterpiece Finish. Diamond Shield Film protects the front against stone chips, scratches and bug acids. Diamond Shield Film is optically clear with a high gloss designed to keep the Full-Paint Masterpiece Finish looking new.

FEATURES

STANDARD FEATURES

MOTORIZED CHASSIS FEATURES

- Freightliner® Chassis (300 Horsepower) Standard on 33' Floorplans
- Freightliner Chassis (330 Horsepower) Standard on 37' Floorplans
- Spartan® Mountain Master Chassis (330 Horsepower) Standard on 39' Floorplans
- Cruise Control
- Stainless Steel Wheel Simulators
- Anti-Lock Braking System
- Back-Up Alarm
- Recessed Fuel Fills, with Crossover to Fill from Either Side
- Tilt & Telescope Steering Wheel

AIR CONDITIONING & HEATING

- LP Furnace with In-Floor Ducted Heat
- LP Leak Detector
- Dash Heater and High-Output Air Conditioner
- Two 13.5M Penguin™ Heat Pump Air Conditioners

APPLIANCES & ACCESSORIES

- Sony® Surround Sound with VCR, DVD Player & Subwoofer
- 30" Convection Microwave Oven with Three-Burner Cooktop
- Range Cover of Matching Countertop Material
- Dometic® I062 Refrigerator, 10 Cu. Ft.
- Hardwood Raised-Panel Refrigerator Front
- Cable TV Connection with RG 6 Coax
- Satellite Prep — Phone, TV Jack and Receptacle
- Roof-Mounted Air Horns
- AM/FM Dash Radio with CD Player
- Carbon Monoxide Detector
- Exterior TV Jack on Door Side
- Telephone Connection with Jacks in Living and Dash Area
- TV Antenna with Power Booster, One Exterior and Two Interior Jacks
- Rearview Color Monitor System
- Color TV in Bedroom
- 10 Gallon Gas/Electric Water Heater—Direct Spark Ignition

CABINETS & FURNITURE

- Flexsteel® Furniture
- Hidden-Leaf Dinette Table with Four Chairs (Two Fixed, Two Folding) — Standard on Most Floorplans
- Lifts on Top of Beds to Access Storage Area
- Oak Hardwood Raised-Panel Arched Cabinet Doors
- Solid Surface Countertop with Undermount Acrylic Sink and Flush Sink Covers in Kitchen
- Ultraleather Front Seats with Six-Way Power, Power Lumbar Support, and Ergo-Flex Arms
- One-Piece Molded Countertop with Integrated Bowl in Bathroom
- Drawers with Metal Guides

ELECTRICAL FEATURES

- Battery Disconnect for House Batteries
- 7.5 kW Guardian® Diesel Generator with Automatic Changeover
- 110 V and 12 V Lighting to Main Slideout
- 110 V Exterior Receptacle on Door Side
- Fluorescent Lights in Ceiling and Overhead Cabinets
- ICC Light Flasher Switch

- 50 Amp Electrical Service with Flexible Cord
- Exterior Security Lights, One Installed on Each Side
- Light in Exterior Storage Compartments, Controlled by an Interior Master Switch
- Interior Courtesy Lights
- Lights in Wardrobes
- Midship Side Turn Signals
- Switched Receptacle for Engine Block Heater
- Emergency Engine Start Switch
- 600 Watt Inverter for Living Area or Bedroom TV
- 55 Amp Converter
- 5 Watt Solar Panel to Charge Chassis Battery
- Two 6 V House Batteries
- Two 12 V Auxiliary Receptacles on Dashboard

EXTERIOR FEATURES

- Convex Exterior Mirrors with Remote Control and Defrost
- Hitch for Towing Car, with 2 Extra 14-Gauge Wires — 10,000 Lb. rating
- Hydraulic Leveling Jacks with Touch Manual Control
- Mud Flaps
- Rear Protective Tow Guard with Stainless Steel Newmar Name Cutout
- Undercoating

INTERIOR FEATURES

- Simulated Marble Floor in Kitchen, Bathroom and Entrance Door Area
- Quilted Bedspread with Reverse Sham and Accent Pillow
- Hardwood Fabric Fascia on Living Area Slideout
- Mini-Blinds in Kitchen Area
- Day/Night Pleated Window Shades and Lambrequins
- Padded Vinyl Ceiling
- Smoke Detector & 10 Bc Fire Extinguisher

PLUMBING / BATH FEATURES

- Demand Water System with SHURflo® Pump
- Exterior Shower Located on Off-Door Side
- SeaLand™ 500+ China Stool
- Fiberglass Tub/Shower with Glass Shower Door
- Monitor Panel
- Sewage Holding-Tank Rinse
- Water-Heater Bypass System
- Water Pump Switches, Located in Bathroom, Above Entrance Door and Exterior Near Gate Valves

CONSTRUCTION FEATURES

- BriteTEK™ Roof with 9 MM Decking
- Gelcoated Fiberglass Exterior Sides
- 5/8" Foam Insulation Laminated in Sidewalls & Ceiling
- Aluminum Frame Sidewalls & Roof Construction, 16" on Center
- Roof R-value Rating: 16
- Sidewall R-value Rating: 11
- Floor R-value Rating: 16

WINDOWS, AWNINGS & VENTS

- Double-Pane, Tinted Safety-Glass Windows
- Automatic Entrance Door Step
- A&E® 9000 Side Awning
- Power Vent with Wall Switch in Bathroom
- Fan-Tastic® Vent with Rain Sensor in Kitchen Area
- A&E® Slideout Awnings

- Front Entry Door With Power Flush Stepwell Cover
- Lighted Acrylic Assist Handle at Entrance Door
- Skylight in Bathroom Located Above Tub/Shower
- Cockpit Overhead Ventilation System

OPTIONAL FEATURES

MOTORIZED CHASSIS FEATURES

- AccuBrite Aluminum Wheels

APPLIANCES & ACCESSORIES

- 100 Lb. Capacity Norcold® Freezer on Pullout Tray (113 Lb.)
- AM/FM Dash Radio with Multi-Disc CD Player and SIRIUS Radio Capability
- External Entertainment Center with 22" LCD TV & AM/FM CD Radio (132 Lb.)
- Navigation System (12 Lb.)
- Norcold® Four-Door refrigerator with Icemaker and Water Dispenser (50 Lb.)
- Dometic 1292 Side By Side Refrigerator, 12 Cu. Ft. (97 Lb.)
- Interior Rearview Mirror with Electronic Compass and Temperature Display
- Two-Piece Washer & Dryer (232 Lb.)

CABINETS & FURNITURE

- Ericsburg Cherry Cabinets
- Maple Cream Cabinets
- Oak Hardwood Cabinets (25 Lb.)
- Summer Maple Hardwood Cabinets (25 Lb.)
- Coastal Cherry Hardwood Cabinets (25 Lb.)
- Velvet Cherry Hardwood Cabinets (25 Lb.)
- Luxurious Pillowtop Mattress In Place Of Standard (10 Lb.)
- Combination Desk/Dinette Table (50 Lb.)

ELECTRICAL FEATURES

- 8.0 kW PowerTech Diesel Quiet Series Generator (255 Lb.)
- Roof-Mounted Spotlight (3 Lb.)
- 2000 Watt Inverter and 2 Extra Batteries (168 Lb.)

EXTERIOR FEATURES

- Full-Paint Masterpiece Finish™ with Diamond Shield Front Protective Film
- Chrome Exterior Mirrors (5 Lb.)

INTERIOR FEATURES

- Sun Shades on Driver and Passenger Side Windows (4 Lb.)
- Power-Activated Sun Visors
- Simulated Ceramic Look Floor in Kitchen, Bathroom and Entrance Door Area (20 Lb.)
- Simulated Plank Floor in Kitchen, Bathroom and Entrance Door Area (20 Lb.)

PLUMBING / BATH FEATURES

- Water Filter with Drink Dispenser at Kitchen Sink (5 Lb.)

CONSTRUCTION FEATURES

- One-Piece Molded Fiberglass Roof with 9 MM Decking (80 Lb.)
- Power Lock Arms on All Slideout Rooms (120 Lb.)

WINDOWS, AWNINGS & VENTS

- A&E Weather Pro Side Awning in Lieu of Standard
- Fan-Tastic Vent in Bathroom

SPECIFICATIONS

FLOORPLAN SPECIFICATIONS

| FLOORPLAN | APP. OVERALL LENGTH | WIDTH | APP. OVERALL HEIGHT | INTERIOR WIDTH | INTERIOR HEIGHT | GREY | SEWAGE | WATER | LP | FURNACE | WATER HEATER |
|-----------|---------------------|--------|---------------------|----------------|-----------------|---------|---------|----------|---------|-------------------|--------------|
| KSDP 3354 | 33' 08" | 101.5" | 12' 01" | 95.5" | 80" | 65 gal. | 45 gal. | 105 gal. | 32 gal. | 35,000 Btu | 10 gal. |
| KSDP 3355 | 33' 08" | 101.5" | 12' 01" | 95.5" | 80" | 65 gal. | 45 gal. | 105 gal. | 32 gal. | 35,000 Btu | 10 gal. |
| KSDP 3720 | 37' 02" | 101.5" | 12' 01" | 95.5" | 80" | 65 gal. | 45 gal. | 105 gal. | 32 gal. | 42,000 Btu | 10 gal. |
| KSDP 3721 | 37' 02" | 101.5" | 12' 01" | 95.5" | 80" | 65 gal. | 45 gal. | 105 gal. | 32 gal. | 42,000 Btu | 10 gal. |
| KSDP 3907 | 38' 10" | 101.5" | 12' 01" | 95.5" | 80" | 65 gal. | 45 gal. | 105 gal. | 32 gal. | 42,000 Btu | 10 gal. |
| KSDP 3908 | 38' 10" | 101.5" | 12' 01" | 95.5" | 80" | 65 gal. | 45 gal. | 105 gal. | 32 gal. | 42,000 Btu | 10 gal. |
| KSDP 3909 | 38' 10" | 101.5" | 12' 01" | 95.5" | 80" | 65 gal. | 45 gal. | 105 gal. | 32 gal. | 42,000 Btu | 10 gal. |
| KSDP 3910 | 38' 10" | 101.5" | 12' 01" | 95.5" | 80" | 65 gal. | 45 gal. | 105 gal. | 32 gal. | 42,000 Btu | 10 gal. |

FREIGHTLINER® CHASSIS INFORMATION

| FLOORPLAN | ENGINE HP | AXLE RATIO | FUEL CAP. | WHEEL BASE | *FRONT GAWR | *REAR GAWR | *GVWR | *GCWR | APP. UVW | APP. NCC |
|-----------|-----------|------------|-----------|-------------|-------------------|------------|-------------------|-------------------|-------------------|------------------|
| KSDP 3354 | 300 | 4.78 | 100 gal. | 190" | 10,500 lb. | 17,500 lb. | 28,000 lb. | 38,000 lb. | 22,413 lb. | 5,587 lb. |
| KSDP 3355 | 300 | 4.78 | 100 gal. | 190" | 10,500 lb. | 17,500 lb. | 28,000 lb. | 38,000 lb. | 22,713 lb. | 5,287 lb. |
| KSDP 3720 | 330 | 4.78 | 100 gal. | 228" | 12,000 lb. | 17,500 lb. | 29,500 lb. | 39,500 lb. | 23,781 lb. | 5,719 lb. |
| KSDP 3721 | 330 | 4.78 | 100 gal. | 228" | 12,000 lb. | 17,500 lb. | 29,500 lb. | 39,500 lb. | 23,541 lb. | 5,959 lb. |

SPARTAN® CHASSIS INFORMATION

| FLOORPLAN | ENGINE HP | AXLE RATIO | FUEL CAP. | WHEELBASE | *FRONT GAWR | *REAR GAWR | *GVWR | *GCWR | APP. UVW | APP. NCC |
|-----------|-----------|------------|-----------|-----------|-------------|------------|------------|------------|-------------------|------------------|
| KSDP 3907 | 330 | 4.88 | 100 gal. | 252" | 12,000 lb. | 20,000 lb. | 32,000 lb. | 42,000 lb. | 25,973 lb. | 6,027 lb. |
| KSDP 3908 | 330 | 4.88 | 100 gal. | 252" | 12,000 lb. | 20,000 lb. | 32,000 lb. | 42,000 lb. | 25,873 lb. | 6,127 lb. |
| KSDP 3909 | 330 | 4.88 | 100 gal. | 252" | 12,000 lb. | 20,000 lb. | 32,000 lb. | 42,000 lb. | 25,319 lb. | 6,681 lb. |
| KSDP 3910 | 330 | 4.88 | 100 gal. | 252" | 12,000 lb. | 20,000 lb. | 32,000 lb. | 42,000 lb. | 25,469 lb. | 6,531 lb. |

Lengths, Heights, Widths and Dry Weights are approximate. Weight will vary based on optional equipment added to the above base weight.

GAWR: Gross Axle Weight Rating is the maximum permissible weight for an axle.

GVWR: Gross Vehicle Weight Rating is the maximum permissible weight of a fully loaded motorhome.

GCWR: Gross Combination Weight Rating is the value specified by the manufacturer of the vehicle as the maximum allowable loaded weight of this motorhome and any towed trailer or towed vehicle.

UVW: Unloaded Vehicle Weight is the weight of this motorhome as built at the factory with full fuel, engine oil and coolants. The UVW does not include cargo, fresh water, LP gas or dealer-installed accessories.

NCC: Net Carrying Capacity is the maximum weight of all occupants, including the driver, personal belongings, food, fresh water, waste water, LP gas, tools, tongue weight of towed vehicle, dealer-installed accessories, etc., that can be carried by the motorhome.

* Specifications supplied by chassis manufacturer.



MOUNTAIN MASTER CHASSIS

The Mountain Master chassis is America's most popular, premium, high horsepower diesel pusher. This premium world-class chassis is the flagship of Spartan Chassis, Inc. The Spartan Mountain Master and Mountain Master GT doesn't just lead the way, it paves the way! Experience the power, the superior ride and handling, plus the excellent driving performance with the Spartan Mountain Master chassis. The Mountain Master chassis provides excellent resale value and carries a 36 month, 50,000 mile, no deductible warranty, which includes road side assistance for the entire warranty period. So sit back and enjoy the ride!

In keeping with our tradition of bringing our customers the highest-quality products in the industry, Newmar works with the following manufacturers to supply components for our vehicles.

SONY.

 **Dometic®** The Sign of Comfort

www.dometic.com

DIAMOND SHIELD

www.diamond-shield.com

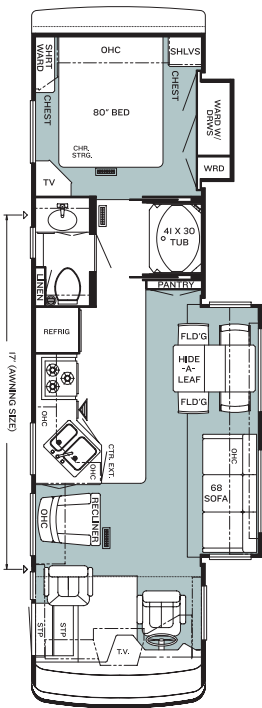


www.spartanchassis.com

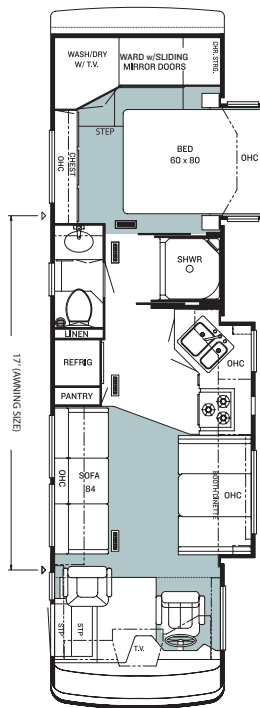


www.guardiangenerators.com

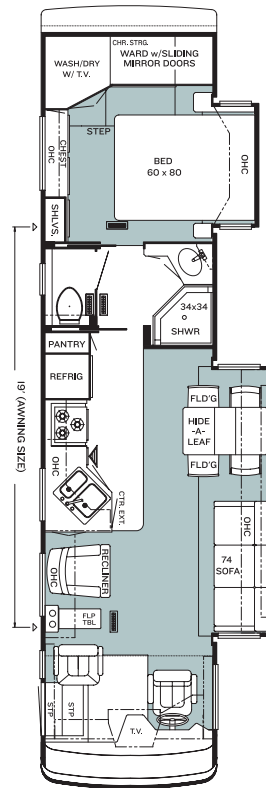
FLOORPLANS



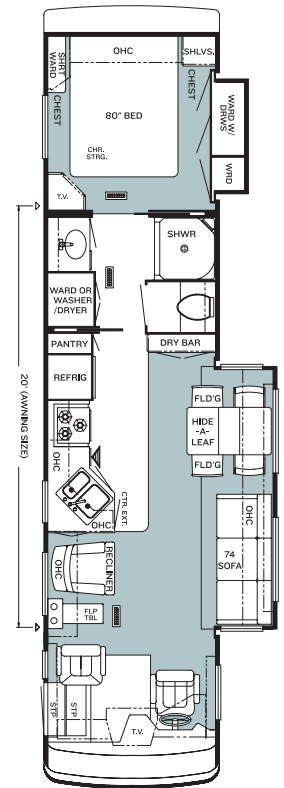
KSDP 3354
Options: K125_2, K276_3



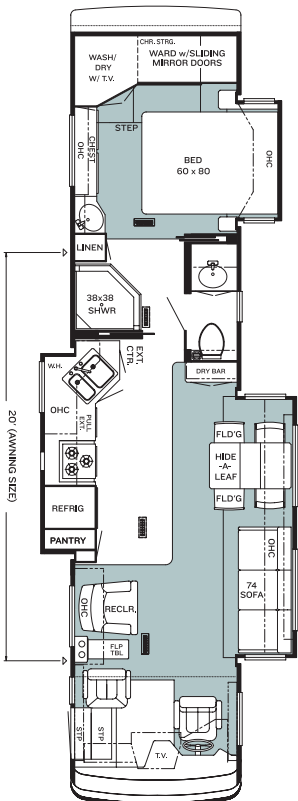
KSDP 3355
Options: None



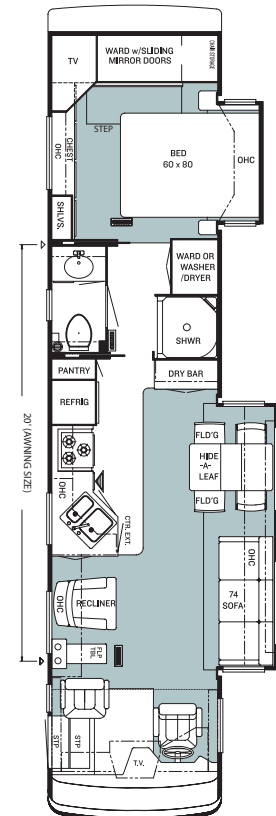
KSDP 3720
Options: K125_2, K200, K276_2, K326



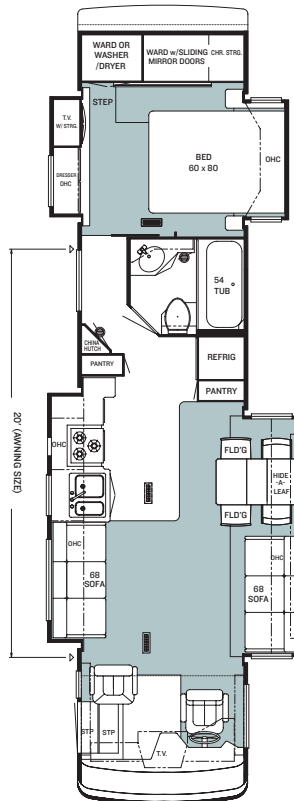
KSDP 3721
Options: K125_2, K200, K276_2, K326



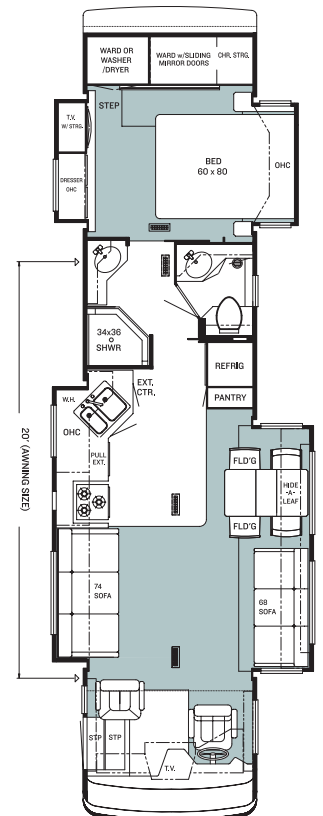
KSDP 3907
Options: K125_2, K200, K276_2, K326, R105_KS3907



KSDP 3908
Options: K125_2, K235, K276_2, K910

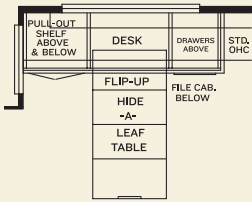


KSDP 3909
Options: K125_2, K273_3

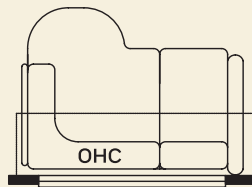


KSDP 3910
Options: K125_2, K276, K620

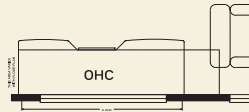
FLOORPLAN OPTIONS



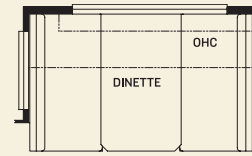
K125_2
Combination Desk
 KSDP: 3354, 3720,
 3721, 3907, 3908,
 3909, 3910



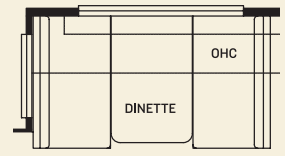
K200
58" L-Sofa
 KSDP: 3720, 3721,
 3907



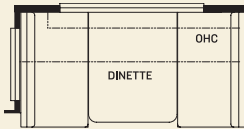
K235
**61" Desk in Lieu
 of Chair/Lampstand**
 KSDP: 3908



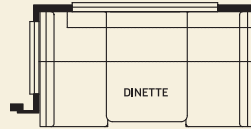
K273_3
Booth Dinette
 KSDP: 3909



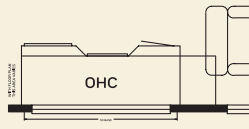
K276
Booth Dinette (Shallow)
 KSDP: 3910



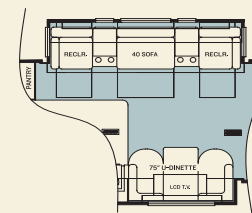
K276-2
Booth Dinette (Shallow)
 KSDP: 3720, 3721,
 3907, 3908



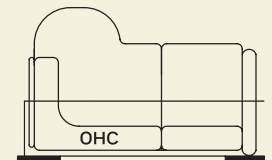
K276-3
**Booth Dinette with
 Drawers (Shallow)**
 KSDP: 3354



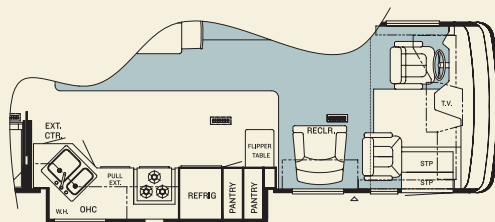
K326
**53" Desk in Lieu
 of Chair/Lampstand**
 KSDP: 3720, 3721,
 3907



K620
**Theatre Seating
 Package**
 KSDP: 3910



K910
66" L-Sofa
 KSDP: 3908



R105_KS3907
Power Lock Arms
 KSDP: 3907

NEWMARCORP.COM

Visit our Web site. Here you'll easily access the most up-to-date Newmar product information, model specifications, floorplans and options. You'll also learn more about who we are, how we work and what we believe in. Become a registered user—for free—and you'll also get access to the latest event data, technical and service tips and the location of your nearest Newmar dealer. This isn't just our site—it's yours.

THE NEWMAR FACTORY TOUR

We'd love to have you visit our state-of-the-art production facility in Nappanee, Indiana. Factory tours are given Monday through Friday at 10 a.m. and 1 p.m. (Indiana time). Pre-registration is not required but is helpful, since tour-group sizes may be limited from time to time. Please arrive 15 minutes before the hour and check in at the tour area that is located in Building Nine on Cheyenne Street. No open-toed sandals can be worn, and children under the age of eight are not allowed to take the tour.

For more information or to pre-register, please call 800.860.0086.



NEWMAR QUALITY: A WAY OF LIFE

NEWMAR CORPORATION
355 N DELAWARE ST
PO BOX 30
NAPPANEE IN 46550-0030
574-773-7791 Fax 574-773-2895
www.newmarcorp.com

Your Official Kountry Star Dealer: