

2 0 0 7



Dolphin



LIVING SPACE

Dolphin recreational vehicles have graced American highways and campgrounds since 1964. That kind of longevity comes from a dedication to quality, value and of course livability. The 2007 models feature the most spacious Dolphin floor plans ever offered, with every area of the coach thoughtfully arranged to maximize usable storage and living space. The rich textures of professionally designed interior decors, fine wood finishes and premium cabinetry hardware exhibit a level of style and quality that far surpasses the typical recreational vehicle. Every aspect of Dolphin's interior is designed to emulate the functionality, quality and style of a fine residence.



Main: 5355 • Bangkok • Stained Cherry

Below left: Full-width electric sun visor also functions as a privacy curtain

Below right: Passenger work station with pull-out tray



Room to Stretch Out



EXPERIENCE THE NATIONAL RV ADVANTAGE!

We build every National RV to far surpass the competition in every aspect. Look for this banner throughout the following pages for more information on important items that help make up The National RV Advantage.



ANOTHER NATIONAL RV ADVANTAGE!

GENUINE CORIAN®

Dolphin features genuine Corian® solid surface materials on the kitchen counter top and bathroom lavatory cabinet top. Other manufacturers cut costs by using imitation materials or laminates cleverly disguised with solid edge moldings. But we insist on the real thing. Nothing is as durable, impervious to stains and resistant to scratching than genuine Corian®.

CORIAN
DUPONT®

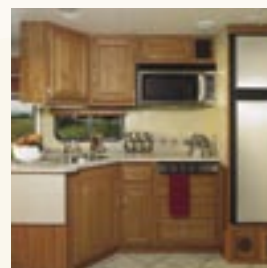
K I T C H E N S

Whether the menu consists of TV dinners or a full course gourmet meal, Dolphin's well-equipped kitchen turns meal preparation from a job into an enjoyable activity. Each of Dolphin's spacious kitchen configurations feature an expansive counter topped with genuine Corian®. The huge 12 cubic foot four-door refrigerator with ice maker* provides plenty of cold storage for longer visits. A versatile convection microwave makes cooking, baking or reheating equally easy. Residential quality cabinetry features solid wood cabinet doors and drawer fronts as well as stainless steel ball bearing drawer guides and premium hardware. Hand-laid vinyl tile flooring is both functional and beautiful.

*All models except 5320, which features an 8 cubic foot double door refrigerator.

Main: 5367 • Bangkok • Natural Cherry
Below left: 5355 • Bangkok • Stained Cherry
Below right: 5355 • Bangkok • Stained Cherry

Now You're Cooking



MASTER SUITE

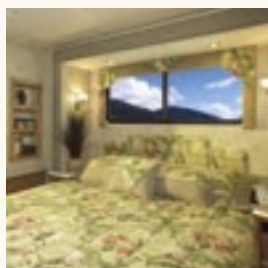
Relax after a full day of adventure in Dolphin's comfortable bedroom suite. Every Dolphin bedroom features National RV's exclusive *Sandpiper Deluxe* true queen-sized pillow top comfort mattress. Huge wardrobes, cabinets, drawers and under-bed storage provide plenty of space for long trips. Dolphin bathrooms are spacious and thoughtfully arranged in a variety of enclosed and open bathroom layouts to satisfy any preference. Every Dolphin motor home features National RV's coveted one-piece, reinforced fiberglass shower with residential quality you can feel just by stepping into it.



Main: 5342 • Baja • Natural Maple

Below left: 5367 • Bangkok • Natural Cherry

Below right: 5355 • Bangkok • Stained Cherry



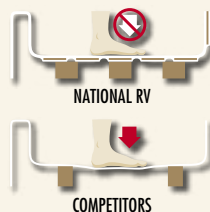
A Restful Retreat



✓ ANOTHER NATIONAL RV ADVANTAGE!

ONE-PIECE FIBERGLASS SHOWER

Manufactured "in-house" at National RV to ensure quality, this shower is crafted of thick fiberglass with plenty of reinforcement for a sturdy, rigid feel. Step into a competitor's shower and you'll feel the difference as the plastic or lower quality fiberglass shower pan gives under your weight. One-piece construction means there are no seams in the shower enclosure where leaks can develop or mold and mildew can thrive. Built for years of trouble-free use, our one-piece reinforced fiberglass shower is truly a National RV Advantage!

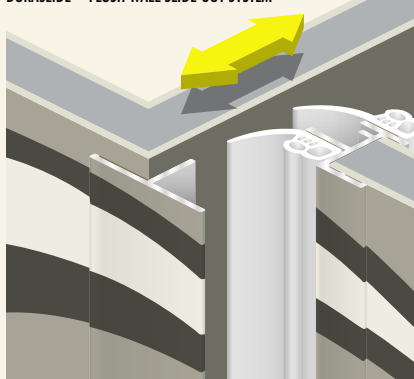


NATIONAL RV

COMPETITORS

✓ **ANOTHER NATIONAL RV ADVANTAGE!**

DURASLIDE™ FLUSH WALL SLIDE-OUT SYSTEM



National RV's exclusive DuraSlide™ flush wall slide-out system provides more than just great looks. It is a testament to the engineering and quality manufacturing that go into every National RV motorhome.

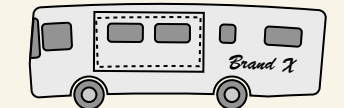


FLUSH EXTERIOR SURFACE WITH SLIDE-OUT CLOSED

With the slide-out fully retracted, the side of the coach has a smooth, flush surface at the slide-out seal. Double wipers with integrated bulb seals provide a positive seal even when the slide-out is in motion, keeping the weather outside and your cozy climate inside.

WHY DON'T ALL MOTORHOMES COME WITH FLUSH SLIDE-OUT SEALS?

National RV's careful engineering and tight manufacturing tolerances are what make the flush slide-out seal possible. The system depends on the rigid coach framework that National RV's DuraFrame® and tubular steel coach body framework provides.



Manufacturers who cut costs by building cheaper, less rigid motorhomes need to hide the resulting gaps and poorer fit by using a wide, protruding cover along the slide-out seams.



✓ **ANOTHER NATIONAL RV ADVANTAGE!**

CIRCULAR AIRFLOW™ SUPERIOR CLIMATE CONTROL

Using a powerful Coleman® basement-mounted air conditioner and heat pump combined with National RV's dual in-ceiling air ducts, Dolphin achieves residential style circular flow of properly cooled or heated, filtered air. The Coleman® unit features dual compressors which work together for optimum cooling efficiency—the second unit comes online only when needed. National RV's unique rear output duct works in concert with the ceiling vents and intake registers mounted near the floor to provide circular airflow for consistent, even climate control.



E X T E R I O R

Dolphin's bold exterior styling makes a statement wherever you go. New for 2007, Dolphin's one-piece windshield provides unobstructed views and high class styling. Also new for 2007 is a stately aluminum grill insert. Choose from standard partial paint or optional full body paint in a variety of attractive color palettes. Polished aluminum wheels, formed aluminum compartment doors and black exterior hardware complete Dolphin's distinctive exterior appearance. Exterior utility compartments are accessible and thoughtfully arranged for ease of use.



Main: 5355 • Baja (optional full body paint)

Below, top left: Stylish automotive exterior lighting

Below, top right: Intuitively arranged plumbing compartment

Below, bottom left: Automotive style fuel fill door

Below, bottom right: Formed aluminum exterior compartment doors

Bold Exterior Styling



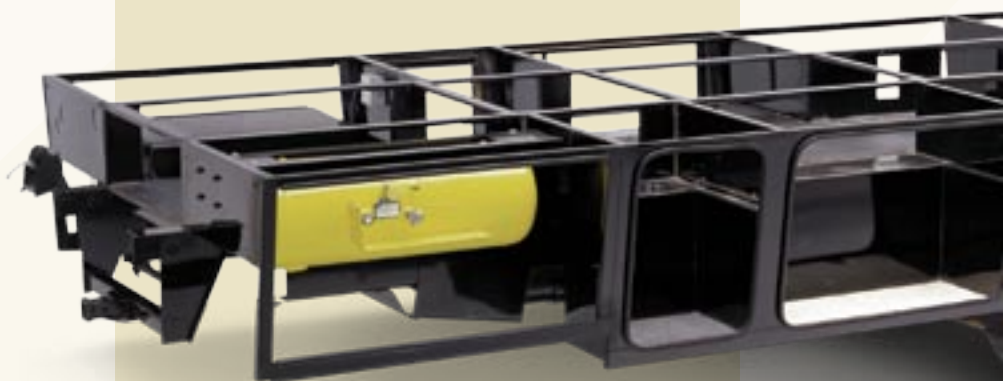
DURAFRAME®

Every great home needs a solid foundation, and that's exactly what National RV's DuraFrame® Chassis System and all-steel tubular coach body construction provide. The DuraFrame® is specifically engineered to provide the strength that today's multiple slide-out motor homes require—all within the chassis system itself. DuraFrame®'s all steel, full welded system of tubular steel risers, plate steel outriggers and truss-like engineering provide an abundance of coach strength while enabling cavernous basement storage spaces. Other manufacturers rely on the coach sidewalls to absorb much of the stresses of travelling and bearing the coach's weight. DuraFrame® provides all of the strength necessary to support the coach within the structure itself—below the floor line and below the slide-outs.



CHASSIS SPECIFICATIONS

	FORD	WORKHORSE
CHASSIS	Ford Super Duty F-53	Workhorse W-22
TIRES	XRV 235/80R22.5	XRV 235/80R22.5
WHEELS	Polished aluminum (steel inner rear wheels)	Polished aluminum (steel inner rear wheels)
BRAKES	4-wheel disc ABS with hydro-boost	4-wheel disc ABS with Hydromax power boost
DRIVE AXLE RATIO	5.38:1	5.86:1
FUEL CAPACITY	75 gallons	75 gallons
HITCH	5,000 lbs. class III with 7-pin electrical connector	5,000 lbs. class III with 7-pin electrical connector
ALTERNATOR	130 Amp	145 Amp
CHASSIS WARRANTY	3 years/36,000 miles	3 years/36,000 miles



Cold Hard Steel

DRIVETRAIN SPECIFICATIONS

	FORD	WORKHORSE
ENGINE	Ford Triton V-10 (6.8L)	GM Vortec 8100 V-8 (8.1L)
PEAK HORSEPOWER	362HP @ 4,750 RPM	340 HP @ 4,200 RPM
PEAK TORQUE	457 lbs./ft. @ 3,250 RPM	455 lbs./ft. @ 3,200 RPM
ENGINE WARRANTY	3 years/36,000 miles	3 years/36,000 miles
TRANSMISSION	Ford Torq-Shift™	Allison 1000
TRANS TYPE	5-speed automatic	6-speed automatic
TRANS WARRANTY	3 years/36,000 miles	5 years/200,000 miles

NOTE: Equipment and specifications depicted in this brochure are subject to change without notice.



ANOTHER NATIONAL RV ADVANTAGE!

SUPERIOR COACH BODY CONSTRUCTION

National RV uses an advanced vacuum lamination process and the highest quality materials in the construction of the fully insulated roof, walls and floor.

TUBULAR STEEL FRAME

Stronger and less susceptible to work fatigue than aluminum and won't decay like wood.

CROWNED ROOF

The best RV roof in the business is built with arched tubular steel roof trusses. The crowned roof has radius edges for superior runoff.

FIBERGLASS ROOF SKIN

A seamless barrier against moisture; more durable and easier to maintain and repair than rubber or aluminum.

1/4" STRUCTURE-WOOD®

This oriented strand board (OSB) from Weyerhaeuser carries a 25 year warranty and is used for both the roof deck and interior ceiling panel.

EPS BLOCK FOAM INSULATION

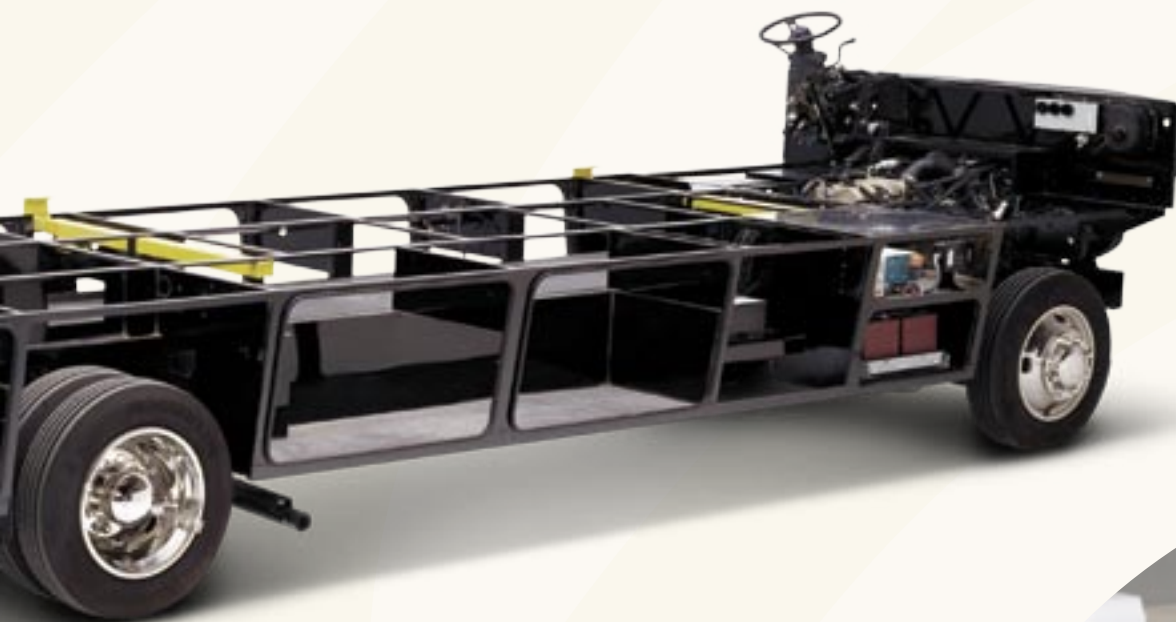
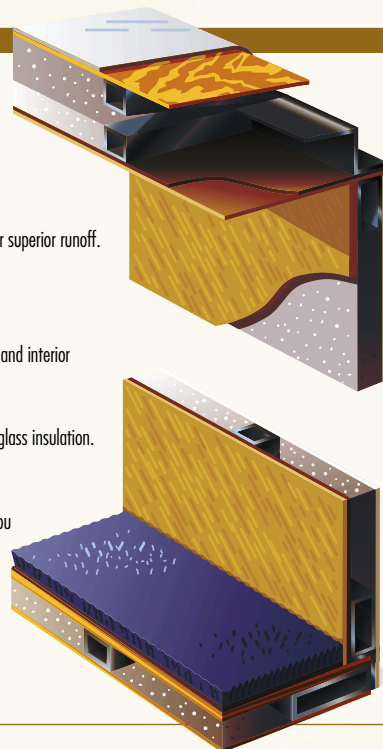
Used throughout the coach in every laminated coach body component. This foam won't settle or sag like spun fiberglass insulation. Insulation is up to 5 1/2" thick in the roof, and completely surrounds the coach living areas. It's even in the floor!

1/4" THICK MAHOGANY INTERIOR WALL PANEL

A thick, firm interior wall surface that's tough enough to anchor our cabinetry — and whatever pictures or fixtures you care to hang, wherever you want to hang them. Competitors' thin interior wall surfaces "give" when you push them, revealing their weakness beneath the surface, with reinforcements built in only where necessary to attach cabinets. Our interior wall surfaces are 1/4" thick and rigid throughout!

HIGH GLOSS GEL COAT EXTERIOR

The exterior sidewall surface is made of a thick, resilient fiberglass gel coat sheet that is vacuum laminated to the sidewall structure. The result is excellent resistance to delamination and long-lasting great looks.



NOTE: Some components and their locations as shown in the photo above may differ slightly from the actual components of the chassis used in this motor home. This photo is intended only as a general representation of the Duraframe Chassis System and is not intended to represent actual components and their locations.



COACH BODY CONSTRUCTION

Duraframe® patented steel sub floor construction	S
Steel framed laminated floor	S
Steel framed crowned laminated fiberglass roof	S
Steel framed laminated fiberglass high gloss sidewalls	S
Front and rear molded high gloss fiberglass caps and integrated bumper assembly	S
One-piece tinted windshield	S
Electric slide-out rooms (flush floor on lounge slide models only)	S
Aluminum exterior storage compartment doors with gas struts	S
Steel framed exterior storage compartments with insulated floors	S
Black aluminum rear ladder	S
Awning rail with integrated rain gutter and drip spouts	S
Automotive undercoating	S
Steel insulated front bulkhead	S
Custom partial body paint with deluxe vinyl graphics in two color schemes	S
Custom full body paint available in two color schemes	O
Protective film front mask	O
6' 10" interior height	S
Fuel fill door in rear bumper	S

COCKPIT FEATURES

Big button AM/FM cassette stereo and CD player with four speakers	S
Sirius® satellite radio module with 6 month subscription	O
Rear vision system with cockpit monitor and black and white motorized rear camera with built-in microphone	O
Color GPS navigation system with side view cameras	O
Color rear vision system with side view cameras	O
Driver and passenger reading lights with switches	S
Custom designed dash with full gauge package	S
In-dash multi-disc CD changer	S
Convenience tray	S
Low-mount automotive style windshield wipers	S
Chrome electric horns	S
Power steering	S
Electronic cruise control	S
Tilt steering wheel	S
Oversized steering wheel (Workhorse chassis only)	S
Two 2-speed overhead dash fans	S
High-mounted black, power, heated convex rear view mirrors	S
Passenger work station with 12V/120V receptacle and phone jack	S
Full-width electric sun visor and privacy screen	S
Wrap-around privacy curtain with easy reach wand	S
Manual driver/passenger side sun shades	O
4-point hydraulic leveling jacks with dash mounted controls	S
Generator hour meter and auxiliary start switch on dash	S
Exterior temperature sensor (Workhorse chassis only)	S
Illuminated step well	S
Floor mats	S

ELECTRICAL SYSTEMS

50 Amp 120V distribution panel	S
50 Amp power cord	S
12V re-settable push button residential style circuit breaker distribution panel	S
7.0 kW Onan® Marquis series generator	S
(2) 6V deep cycle house batteries	S
1,000W inverter/converter	S
(1) 12V chassis battery	S
Battery disconnect switch for house batteries	S
Systems monitor panel	S
Porch light with interior switch	S
120V patio receptacle and telephone jack	S
Recessed fluorescent lights in ceiling with wall mounted switches	S
Designer light fixtures in living and bedroom areas	S
Cosmetic light in bathroom	S
Three water pump switches (kitchen, bathroom and exterior plumbing service station)	S
Pre-wired for solar panel	S
Battery voltage meter in monitor panel	S
GFI protected electrical circuit	S
Courtesy light at entry-door switch panel	S
Lights in exterior storage compartments and service area	S
Pre-wired for trailer brake controller	S

CLIMATE CONTROL

Coleman® 2-ton high efficiency basement mounted air conditioner with heat pump and ceiling ducting	S
35,000 BTU electronic ignition furnaces	S
Ducted heating system	S
Pre-wire for 12V Fan-Tastic® Vent with wall thermostat & rain sensor in bedroom	S
12V Fan-Tastic® Vent with wall thermostat & rain sensor in galley	S
12V roof exhaust fan in bathroom	S
Non-powered roof vent in bedroom	S
12V Fan-Tastic® Vent with wall thermostat & rain sensor in bedroom	O
Dash automotive heating and air conditioner system with defroster	S

WINDOWS, DOORS & AWNINGS

Dual pane radius tinted safety glass windows	S
Electric patio awning with metal cover	S
Living room and bedroom window awning package	O
Bedroom rear picture window	S
30" wide radius entrance door with clear glass, shade and screen door	S
Power entrance step with light and anti-skid surface	S
Ventilated windows on sides of slide-out rooms (lounge slides only)	S
Slide-out topper awnings	S
Window in toilet room	S
Exterior windshield sun screens	O
Tinted skylight in bathroom	S

INTERIOR

Throughout

Natural Maple finish doors and paneling	S
Natural Cherry finish doors and paneling	O
Stained Cherry finish doors and paneling	O
Vinyl padded ceiling material	S
Telestrut hardware on overhead doors and positive catches on others	S
Drawers with ball bearing roller guide design	S

Living Area

Booth dinette with slide-out storage baskets under seats	S
Dinette cabinet/table with built-in table extension, two high-back wooden chairs and two wooden folding chairs (N/A 5320)	O
Plush carpet with deluxe pad	S
Day/night shades with designer valances	S
Hutch and overhead with beveled mirror (5355 & 5367 only)	S

Kitchen Area

Slide-out pantry (5320 only)	S
Corian® kitchen counter top with Corian® flush mount stove cover	S
Corian® counter top extension	S
Backsplash with scored Corian® and glass inserts	S
Large stainless steel under mount dual sink	S
Wood cutting block sink cover	S
Wastebasket	S
Designer vinyl tile flooring	S
Mini-blind with valance	S
Rubbermaid® silverware organizer tray	S

Bath Area

Designer vinyl flooring	S
Decorative glass shower door	S
Laminate lavy counter top with decorative edge	S
Stainless steel lavy sink	S
Medicine cabinet	S

Bedroom Area

Plush carpet with deluxe pad	S
Day/night shades with designer valances	S
Cedar lining in wardrobe and under-bed storage	S
Mirrored wardrobe with hamper below (N/A 5367)	S
Bedspread, pillows and shams	S
Slide-out queen bed with under-bed storage compartment	S
Sandpiper Deluxe™ residential style queen size pillow top mattress	S

FURNITURE

Kustom Fit® soft touch UltraLeather™ 6-way power driver seat with swivel base	S
Kustom Fit® soft touch UltraLeather™ manual passenger seat with swivel base	S
Kustom Fit® Wonder-Bed® fabric sleeper sofa with slide-in armrests	S
Kustom Fit® Wonder-Bed® soft touch UltraLeather™ sleeper sofa with slide-in armrests	O
Kustom Fit® free-standing vinyl swivel recliner chair with footrest	S
Kustom Fit® free-standing soft touch UltraLeather™ swivel recliner chair with footrest	O

SAFETY FEATURES

Fog lights	S
Driver and passenger three point seat belts	S
Dead bolt lock on entrance door	S
Fire extinguisher	S
Smoke, carbon monoxide (CO) and LPG detectors	S
Emergency exit window	S
Daytime running lights (CSA units only)	S
Exterior entry assist handle	S
Interior entry assist handle	S

PLUMBING SYSTEMS

Coach Exterior

Heated systems compartment with easy access to hook-ups	S
On demand water system and water pump	S
Holding tank rinsing system (black tank only)	S
Winterization antifreeze inlet to pump	S
Outside shower	S
Water heater bypass valve	S
Pressurized water fill with integrated regulator	S
10 gallon quick-recovery gas/electric water heater with DSI	S

Kitchen Area

Water filter	S
Single lever faucet with side sprayer	S

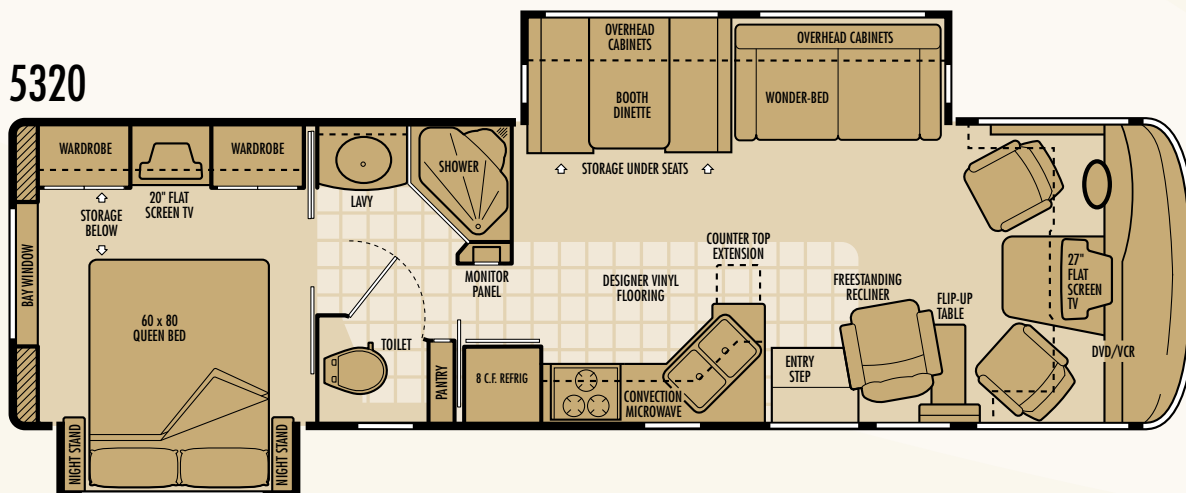
Bath Area

One piece fiberglass angled shower with seat	S
Fixed shower head	S
Porcelain toilet with sprayer	S
Single lever lavy faucet	S
Pre-plumbed for optional washer/dryer (5355 only)	S

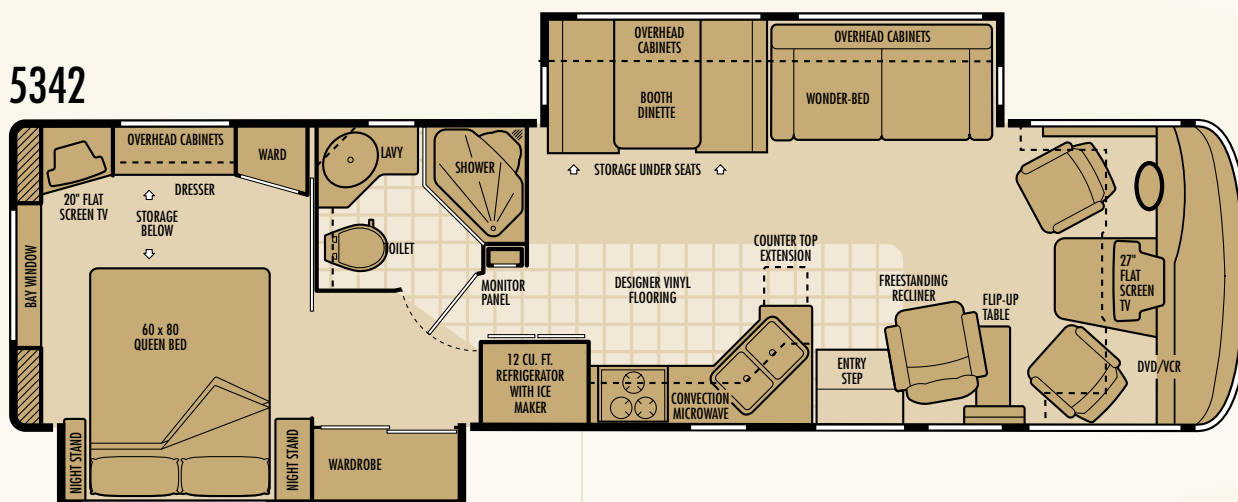
APPLIANCES & ACCESSORIES

12 cu. ft. four door Norcold® refrigerator with ice maker (N/A 5320)	S
8 cu. ft. double door refrigerator and pantry (5320 only)	S
10 cu. ft. double door refrigerator with ice maker and pantry (5320 only)	O
High output 3-burner cook top with drawers below	S
High output 3-burner cook top with oven below (delete drawers)	O
Convection microwave oven with carousel, built-in light and fan	S
Cable TV hook-up and multiple telephone jacks	S
TV antenna and video control box with antenna boost	S
27" flat screen TV in living area (above cockpit)	S
32" LCD TV in hutch area (mid-coach) (5367 only)	O
20" flat screen TV with front A/V jacks in bedroom	S
DVD/VCR combo player with remote	S
Home theater entertainment package (includes DVD/VCR digital receiver and subwoofer/speaker system)	O
Pre-wired for satellite dish	S
Kingdome® automatic stationary satellite dish	O
Combination washer/dryer (5355 only)	O

5320



5342



Wide Open Spaces

WEIGHTS & MEASUREMENTS

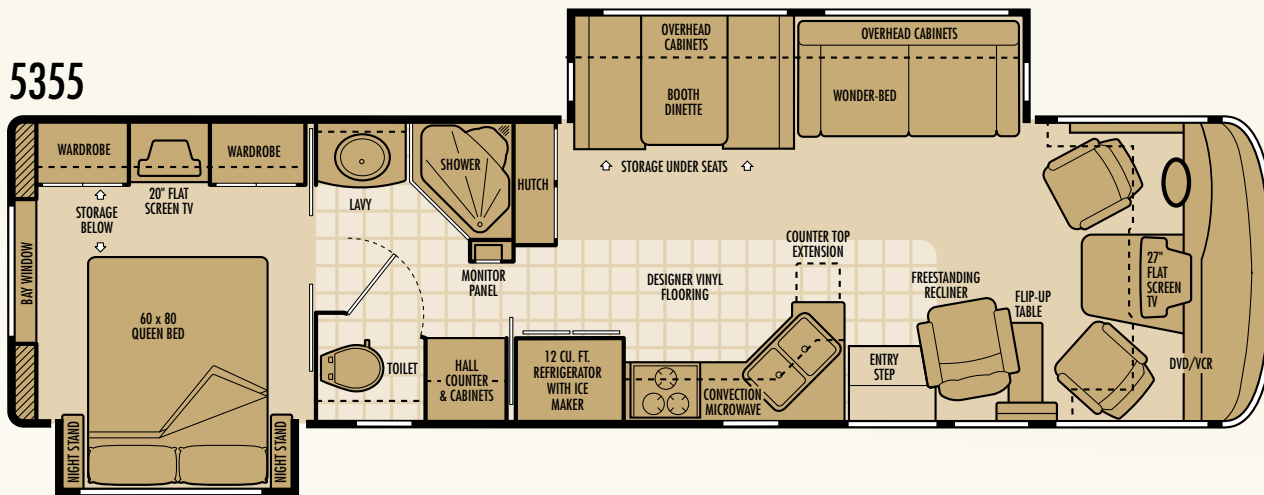
	5320		5342		5355		5367	
CHASSIS:	FORD	WORKHORSE	FORD	WORKHORSE	FORD	WORKHORSE	FORD	WORKHORSE
Gross Vehicle Weight Rating (lbs.)	22,000	22,000	22,000	22,000	22,000	22,000	22,000	22,000
Gross Combined Weight Rating (lbs.)	26,000	26,000	26,000	26,000	26,000	26,000	26,000	26,000
Front Gross Axle Rating (lbs.)	7,500	8,000	7,500	8,000	7,500	8,000	7,500	8,000
Rear Gross Axle Rating (lbs.)	14,500	15,000	14,500	15,000	14,500	15,000	14,500	15,000
Wheelbase	208"	208"	228"	228"	228"	228"	228"	228"
Overall Length	34' 1"	34' 1"	35' 5"	35' 5"	36' 5"	36' 5"	36' 5"	36' 5"
Overall Height*	11' 9"	11' 9"	11' 9"	11' 9"	11' 9"	11' 9"	11' 9"	11' 9"
Interior Height	82"	82"	82"	82"	82"	82"	82"	82"
Interior Width	97½"	97½"	97½"	97½"	97½"	97½"	97½"	97½"
Exterior Width	101¼"	101¼"	101¼"	101¼"	101¼"	101¼"	101¼"	101¼"
Water Heater (gallons)	10	10	10	10	10	10	10	10
Fresh Water** (gallons)	90	90	90	90	90	90	90	90
Gray Tank (gallons)	41	41	65	65	65	65	64	64
Black Tank (gallons)	50	50	47	47	47	47	48	48
LP-Gas (liquid volume, gallons)	24	24	24	24	24	24	24	24

*Overall height listed is measured to the top of the rear ladder, which is the highest point of the coach with standard equipment. Add 8" to the stated overall height for units equipped with the Kingdome satellite dish option.

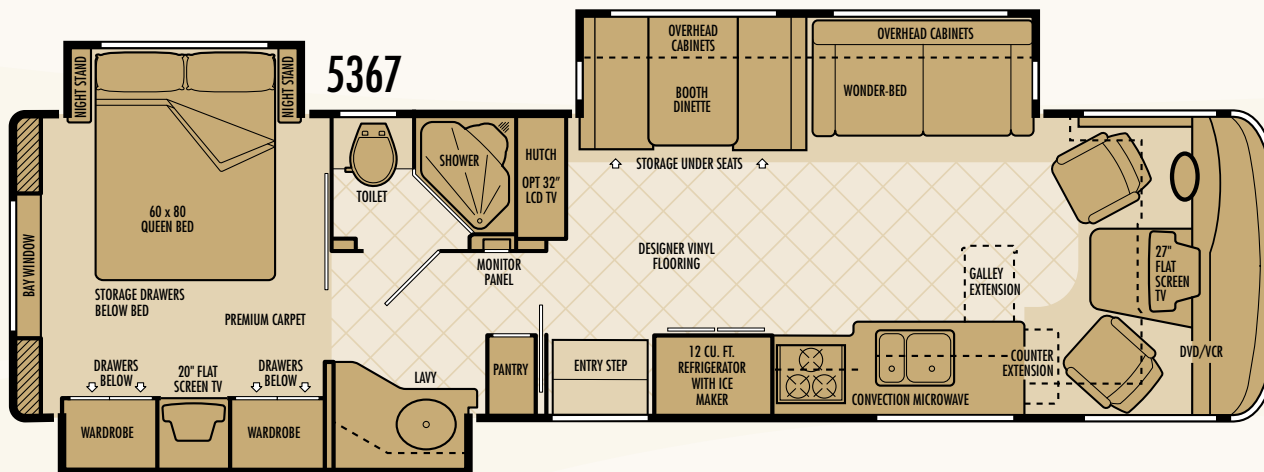
**Includes 10 gallon water heater capacity.

NOTE: Specifications and equipment are subject to change without notice.

5355



5367



Below: 5342 • Baja • Natural Maple

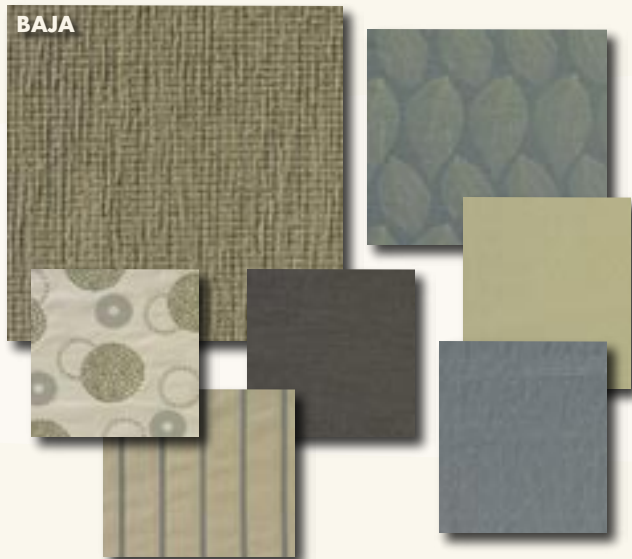


✓ ANOTHER NATIONAL RV ADVANTAGE!

KUSTOM-FIT® SEATING

Built especially for National RV, this cockpit and living area seating exceeds the comfort and quality of furniture in much more expensive "highline" motorhomes. The foam of each seat cushion is *cold poured* as a single piece, molded in the correct shape. Competitors' seats are pieced together from blocks of foam which can come unglued and fall apart. This seat foam is so durable it carries a 10 year warranty. The rugged seat frame is constructed of welded tubular steel for superior strength and carries a lifetime warranty.

WOOD FINISHES INTERIOR DECORS



EXTERIORS

BAJA



Standard Partial Paint



Optional Full Body Paint

BANGKOK



Standard Partial Paint



Optional Full Body Paint

2007 Dolphin



NATIONAL R.V., INC.
 3411 N. Perris Boulevard
 Perris, California 92571
 (800) 322-6007 • Fax (951) 943-8498
www.nationalrv.com

©2006 National R.V., Inc. Colors, equipment and specifications depicted in this brochure are subject to change without notice. Please verify the actual equipment installed on any specific motorhome prior to purchase.

DOLP07V1 • NOV 06



National RV, Inc. is a subsidiary of National RV Holdings, Inc., a public company whose shares are traded on NYSE Arca under the symbol **NVH**. Please see **www.nrvh.com** for more information.



YOUR AUTHORIZED DOLPHIN DEALER IS: