

# IMPULSE SILVER



## Why Impulse Silver?

- Three family-friendly, versatile floorplans
- LED ceiling lights
- MCD solar/blackout roller shades
- Radio/Rearview Monitor System
- Available Infotainment Center with Rand McNally RV GPS
- Large rear storage compartments
- Powered patio awning with LED lighting
- 4,000-watt Cummins Onan® MicroQuiet™ gas generator
- Available 1,000-watt DC/AC inverter

# IMPULSE SILVER



## Why Impulse Silver?

- Three family-friendly, versatile floorplans
- LED ceiling lights
- MCD solar/blackout roller shades
- Radio/Rearview Monitor System
- Available Infotainment Center with Rand McNally RV GPS
- Large rear storage compartments
- Powered patio awning with LED lighting
- 4,000-watt Cummins Onan<sup>®</sup> MicroQuiet™ gas generator
- Available 1,000-watt DC/AC inverter

# IMPULSE SILVER



Click on this icon throughout the brochure to link to more information on the web.



ON THE COVER: 26P Sierra Full-Body Paint

31WP Brownstone with Coffee-Glazed Vienna Maple Cabinetry

## FOLLOW YOUR IMPULSE

The Impulse® Silver was built with the philosophy that you should not have to compromise on comfort and style to enjoy the convenience of a Class C motorhome. It starts on the outside with a powered patio awning with LED lighting and available full-body paint. The promise is fulfilled on the inside with LED ceiling lights, available Ultraleather™ seating,

and beautiful cabinetry in your choice of Forest Cherry or Coffee-Glazed Vienna Maple finishes. Of course, every Itasca® coach offers the proven quality of Winnebago Industries® legendary SuperStructure® construction, assuring you there is no greater experience in Class C motorhomes than the Impulse Silver.



**RECOGNIZED QUALITY** The RV Dealers Association bestows its annual Quality Circle Award based on dealer ratings to manufacturers that provide exceptional products, service and support. Only one manufacturer has received this award for seventeen consecutive years: Winnebago Industries.\*

# IMPULSE SILVER



Click on this icon throughout the brochure to link to more information on the web.



ON THE COVER: 26P Sierra Full-Body Paint

31WP Brownstone with Coffee-Glazed Vienna Maple Cabinetry

## FOLLOW YOUR IMPULSE

The Impulse® Silver was built with the philosophy that you should not have to compromise on comfort and style to enjoy the convenience of a Class C motorhome. It starts on the outside with a powered patio awning with LED lighting and available full-body paint. The promise is fulfilled on the inside with LED ceiling lights, available Ultraleather™ seating,

and beautiful cabinetry in your choice of Forest Cherry or Coffee-Glazed Vienna Maple finishes. Of course, every Itasca® coach offers the proven quality of Winnebago Industries® legendary SuperStructure® construction, assuring you there is no greater experience in Class C motorhomes than the Impulse Silver.



**RECOGNIZED QUALITY** The RV Dealers Association bestows its annual Quality Circle Award based on dealer ratings to manufacturers that provide exceptional products, service and support. Only one manufacturer has received this award for seventeen consecutive years: Winnebago Industries.®

## BEST IN CLASS

See how Winnebago Industries takes motorhome design and function to the next level, and why we've earned the right to be called the Most Recognized Name in Motorhomes.®



Click on this icon throughout the brochure to link to more information on the web.



The **Lowered Entrance Step** is designed for easy access and eliminates the need for an auxiliary entrance step.



The available **Comfort Sofa Sleeper** quickly converts from a sofa into a comfortable bed that features a self-inflating mattress and pump that automatically reads mattress pressure to maintain your desired setting (NA 31RP).



You'll appreciate the latest in-dash communications technology in the available **Infotainment Center with Rand McNally RV GPS**. It delivers safe and easy trip routing with turn-by-turn voice guidance, an AM/FM radio with a CD/DVD player, and SiriusXM™ availability.



Store extra gear or keep beverages on ice in this **Recessed Storage Compartment** with drain plug. The center compartment cover doubles as a table for outdoor gatherings.



Day or night, the smoothly retracting **MCD Solar/Blackout Roller Shades** give you total control of light and privacy levels.

## BEST IN CLASS

See how Winnebago Industries takes motorhome design and function to the next level, and why we've earned the right to be called the Most Recognized Name in Motorhomes.®



Click on this icon throughout the brochure to link to more information on the web.



The **Lowered Entrance Step** is designed for easy access and eliminates the need for an auxiliary entrance step.



The available **Comfort Sofa Sleeper** quickly converts from a sofa into a comfortable bed that features a self-inflating mattress and pump that automatically reads mattress pressure to maintain your desired setting (NA 31RP).



You'll appreciate the latest in-dash communications technology in the available **Infotainment Center with Rand McNally RV GPS**. It delivers safe and easy trip routing with turn-by-turn voice guidance, an AM/FM radio with a CD/DVD player, and SiriusXM™ availability.



Store extra gear or keep beverages on ice in this **Recessed Storage Compartment** with drain plug. The center compartment cover doubles as a table for outdoor gatherings.



Day or night, the smoothly retracting **MCD Solar/Blackout Roller Shades** give you total control of light and privacy levels.



31WP Brownstone with Coffee-Glazed Vienna Maple Cabinetry

With three floorplans to choose from, the Impulse Silver has something for everyone. The 26QP and the 31RP give you the option of a front overhead bunk for extra sleeping space or an entertainment center, complete with a 32" HDTV, DVD player, and surround sound. LED ceiling lights and MCD solar/blackout shades make both afternoon naps and family movie nights possible, no matter what time it is.



Optional Lounge HDTV



31WP Brownstone with Coffee-Glazed Vienna Maple Cabinetry

With three floorplans to choose from, the Impulse Silver has something for everyone. The 26QP and the 31RP give you the option of a front overhead bunk for extra sleeping space or an entertainment center, complete with a 32" HDTV, DVD player, and surround sound. LED ceiling lights and MCD solar/blackout shades make both afternoon naps and family movie nights possible, no matter what time it is.



Optional Lounge HDTV



From quick snacks to family meals, this full-featured galley does it all. Equipped with a large double-door refrigerator/freezer, microwave, range top, cold water filtration system, and full-extension drawers, this complete galley is full of practical amenities, abundant storage, and plenty of prep space.



31WP Galley with Coffee-Glazed Vienna Maple Cabinetry



Full-Extension Drawer Slides



Flip-Up Counter



Refrigerator/Freezer

From quick snacks to family meals, this full-featured galley does it all. Equipped with a large double-door refrigerator/freezer, microwave, range top, cold water filtration system, and full-extension drawers, this complete galley is full of practical amenities, abundant storage, and plenty of prep space.



31WP Galley with Coffee-Glazed Vienna Maple Cabinetry



Full-Extension Drawer Slides



Flip-Up Counter



Refrigerator/Freezer



BenchMark® Full Comfort Dinette

Innerspring cushions flip up to reveal large storage bins in the BenchMark® full comfort dinette—standard on the Impulse Silver. The entire dinette easily converts into a comfortable sleeping space using the easily-adjustable Dream Dinette™ table.



BenchMark Dinette Storage



BenchMark® Full Comfort Dinette

Innerspring cushions flip up to reveal large storage bins in the BenchMark® full comfort dinette—standard on the Impulse Silver. The entire dinette easily converts into a comfortable sleeping space using the easily-adjustable Dream Dinette™ table.



BenchMark Dinette Storage



**31WP** Brownstone with Coffee-Glazed Vienna Maple Cabinetry

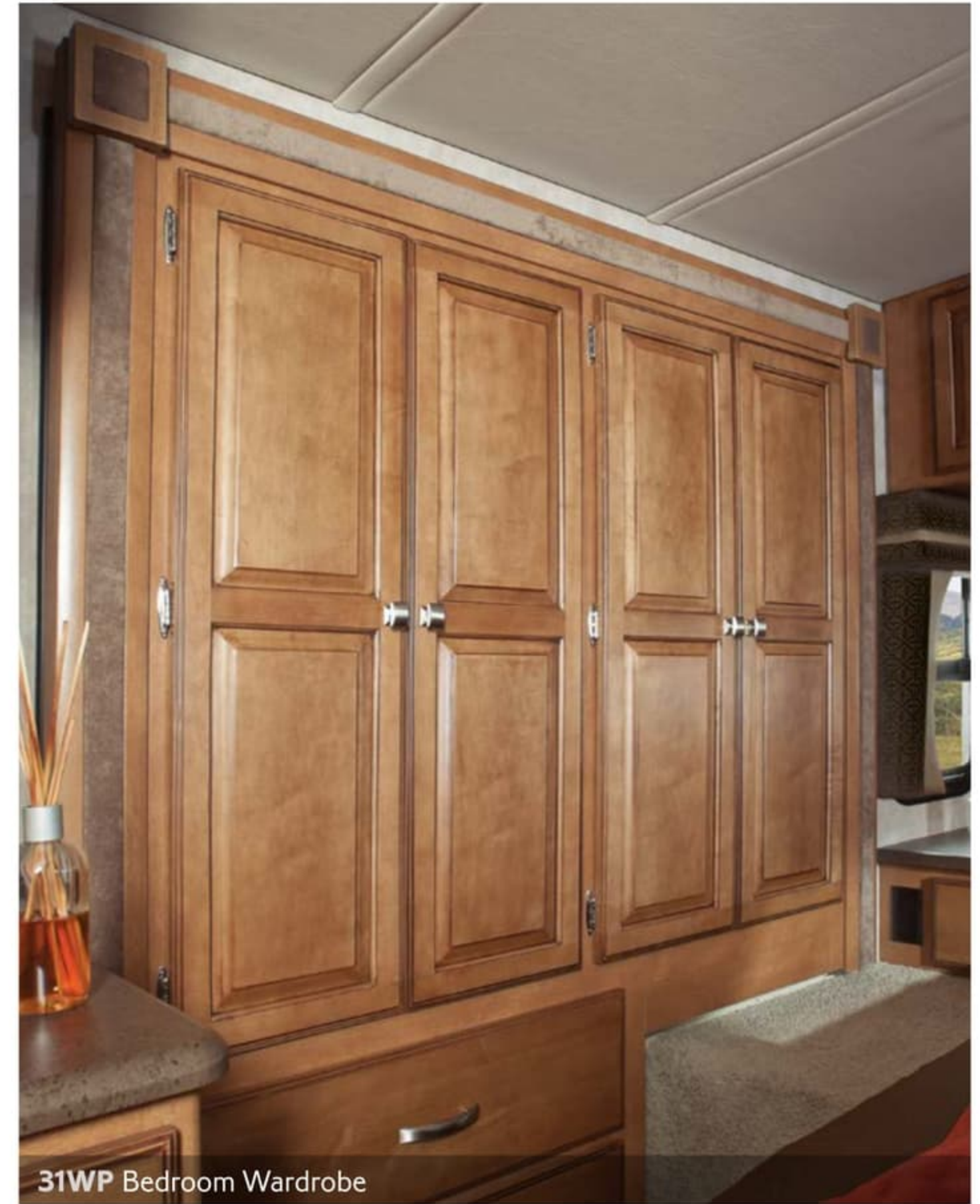


**31WP** Bedroom Wardrobe

No matter which floorplan you choose, you'll appreciate the master bedroom's spacious and comfortable layout. The 31RP and the 31WP both include a wardrobe slideout with his and her nightstands, while the 26QP offers a shirt closet and a roomy wardrobe. All three floorplans include a walk-around queen bed.



**31WP** Brownstone with Coffee-Glazed Vienna Maple Cabinetry



**31WP** Bedroom Wardrobe

No matter which floorplan you choose, you'll appreciate the master bedroom's spacious and comfortable layout. The 31RP and the 31WP both include a wardrobe slideout with his and her nightstands, while the 26QP offers a shirt closet and a roomy wardrobe. All three floorplans include a walk-around queen bed.

Enjoy plenty of time outdoors with the electric patio awning, a surprising amount of outside storage, a 4,000-watt Cummins Onan® MicroQuiet™ generator, and two deep-cycle batteries that will keep the power flowing to your motorhome even when shoreline power is not available.



Exterior Rear Storage w/Table



Pull-Out Battery Tray



Recessed Storage Compartment

Enjoy plenty of time outdoors with the electric patio awning, a surprising amount of outside storage, a 4,000-watt Cummins Onan® MicroQuiet™ generator, and two deep-cycle batteries that will keep the power flowing to your motorhome even when shoreline power is not available.



Exterior Rear Storage w/Table



Pull-Out Battery Tray



Recessed Storage Compartment



### Fiberglass Roof

The one-piece fiberglass roof is backed by a 10-year limited parts-and-labor roof skin warranty.

### Rubber Can't Cut It

Rubber roofs used by competitors can streak and degrade over time.

**Interlocking Joints** Specially engineered interlocking joints connect the floor, sidewalls and roof where competitors often rely on simple screws to bear the weight.



**E-Coating** An electrodeposition coating helps protect critical steel components.

**Embedded Steel** Metal substructures embedded into the sidewall provide solid attachment points to keep cabinets and appliances mounted securely in place.

**Solid Framework** Aluminum, extruded in our own facility to our exacting standards, creates an extremely strong and solid structural framework.

### Laser-Cut Tubing

Precision laser cutters create precise joints in structural steel that are stronger and require less welding.



### Thermo-Panel® Sidewalls

By layering fiberglass and high-density block foam insulation with welded aluminum support structures, we create some of the industry's strongest, most durable and lightweight sidewalls.

# SUPER STRUCTURE

BUILT TO LAST

Every coach—from our smallest Class C to our largest diesel-pusher model—is built to Winnebago Industries'® legendary SuperStructure® construction standards. It's a process developed and refined over more than 50 years of building some of the strongest, most durable coaches in the industry.

### Fiberglass Roof

The one-piece fiberglass roof is backed by a 10-year limited parts-and-labor roof skin warranty.

### Rubber Can't Cut It

Rubber roofs used by competitors can streak and degrade over time.

**Interlocking Joints** Specially engineered interlocking joints connect the floor, sidewalls and roof where competitors often rely on simple screws to bear the weight.



**E-Coating** An electrodeposition coating helps protect critical steel components.

**Embedded Steel** Metal substructures embedded into the sidewall provide solid attachment points to keep cabinets and appliances mounted securely in place.

**Solid Framework** Aluminum, extruded in our own facility to our exacting standards, creates an extremely strong and solid structural framework.

### Laser-Cut Tubing

Precision laser cutters create precise joints in structural steel that are stronger and require less welding.



### Thermo-Panel® Sidewalls

By layering fiberglass and high-density block foam insulation with welded aluminum support structures, we create some of the industry's strongest, most durable and lightweight sidewalls.

# SUPER STRUCTURE

BUILT TO LAST

Every coach—from our smallest Class C to our largest diesel-pusher model—is built to Winnebago Industries'® legendary SuperStructure® construction standards. It's a process developed and refined over more than 50 years of building some of the strongest, most durable coaches in the industry.

**TESTING** Before rolling out of our factories, every coach undergoes an extensive 113-point inspection. Each coach also passes a high-pressure water test that simulates rain at a rate of 50-inches per hour to check for leaks. During the design process, our computer simulations, physical testing center, and rigorous test track ensure each model is built to last.



**DETAILS** At Winnebago Industries, we treat the features you can't see with the same care as the ones you can. Look in the access panels of some of our competitors' coaches and you'll see loose insulation and wires haphazardly strewn about. Winnebago Industries maintains a clean fit and finish throughout so your coach will last for the long haul.



**BUILT IN-HOUSE** We extrude our own aluminum. We rotocast our own plastic components. In fact, we manufacture most of our own parts so they are designed to fit the space, rather than fitting the space to an awkward off-the-shelf component size.



**SUPER  
STRUCTURE**  
BUILT TO LAST

Visit [BetterBuiltRVs.com](http://BetterBuiltRVs.com) to gain real insight into what goes into a Winnebago Industries motorhome.

**TAKE A TOUR** We're proud of our processes, state-of-the-art facilities, and the people who make Winnebago Industries number one. We invite you to visit our complex in Forest City, Iowa, for a first-hand look at the dedication and technology behind every motorhome we build.



**TESTING** Before rolling out of our factories, every coach undergoes an extensive 113-point inspection. Each coach also passes a high-pressure water test that simulates rain at a rate of 50-inches per hour to check for leaks. During the design process, our computer simulations, physical testing center, and rigorous test track ensure each model is built to last.



**DETAILS** At Winnebago Industries, we treat the features you can't see with the same care as the ones you can. Look in the access panels of some of our competitors' coaches and you'll see loose insulation and wires haphazardly strewn about. Winnebago Industries maintains a clean fit and finish throughout so your coach will last for the long haul.



**BUILT IN-HOUSE** We extrude our own aluminum. We rotocast our own plastic components. In fact, we manufacture most of our own parts so they are designed to fit the space, rather than fitting the space to an awkward off-the-shelf component size.



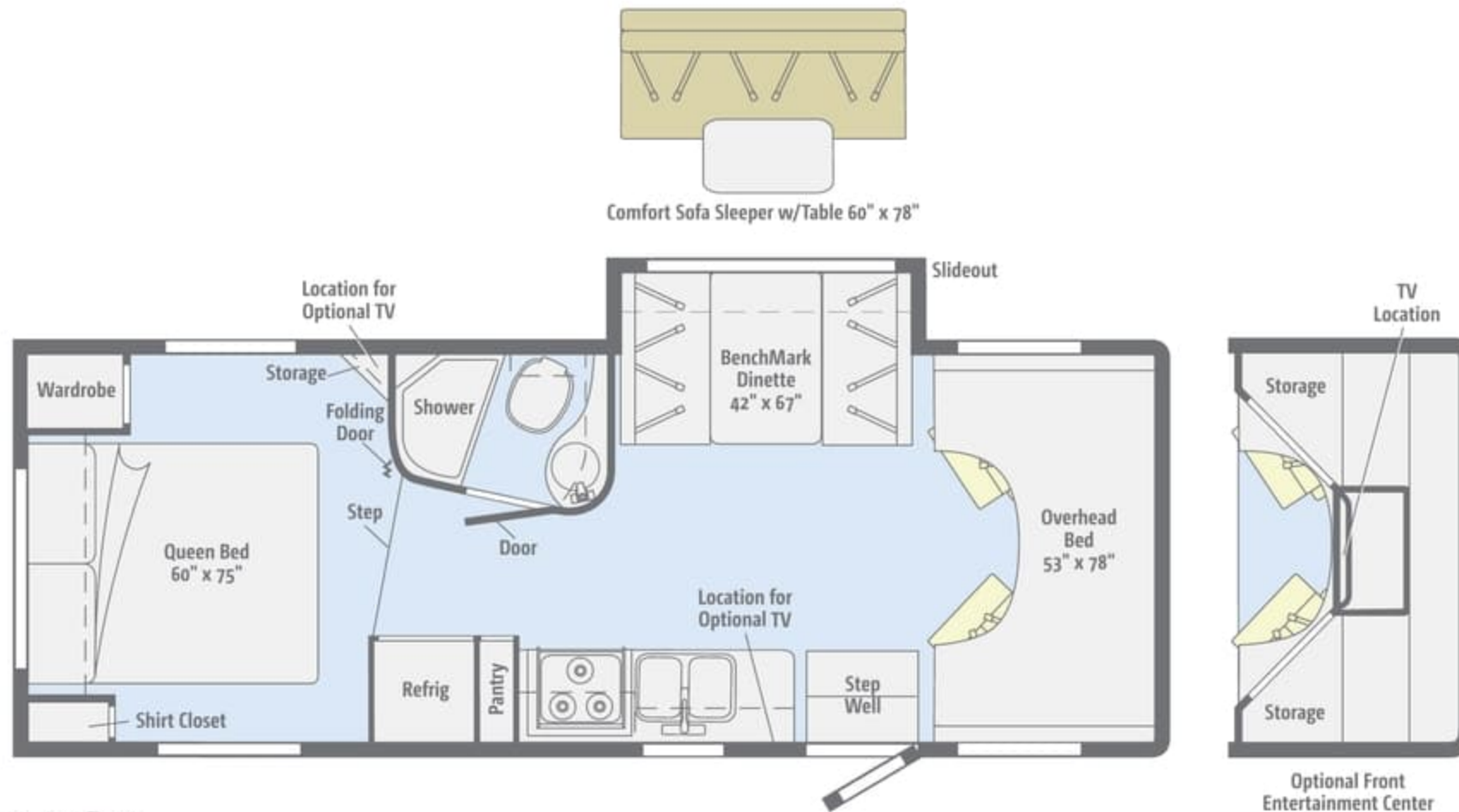
**SUPER  
STRUCTURE**  
BUILT TO LAST

Visit [BetterBuiltRVs.com](http://BetterBuiltRVs.com) to gain real insight into what goes into a Winnebago Industries motorhome.

**TAKE A TOUR** We're proud of our processes, state-of-the-art facilities, and the people who make Winnebago Industries number one. We invite you to visit our complex in Forest City, Iowa, for a first-hand look at the dedication and technology behind every motorhome we build.



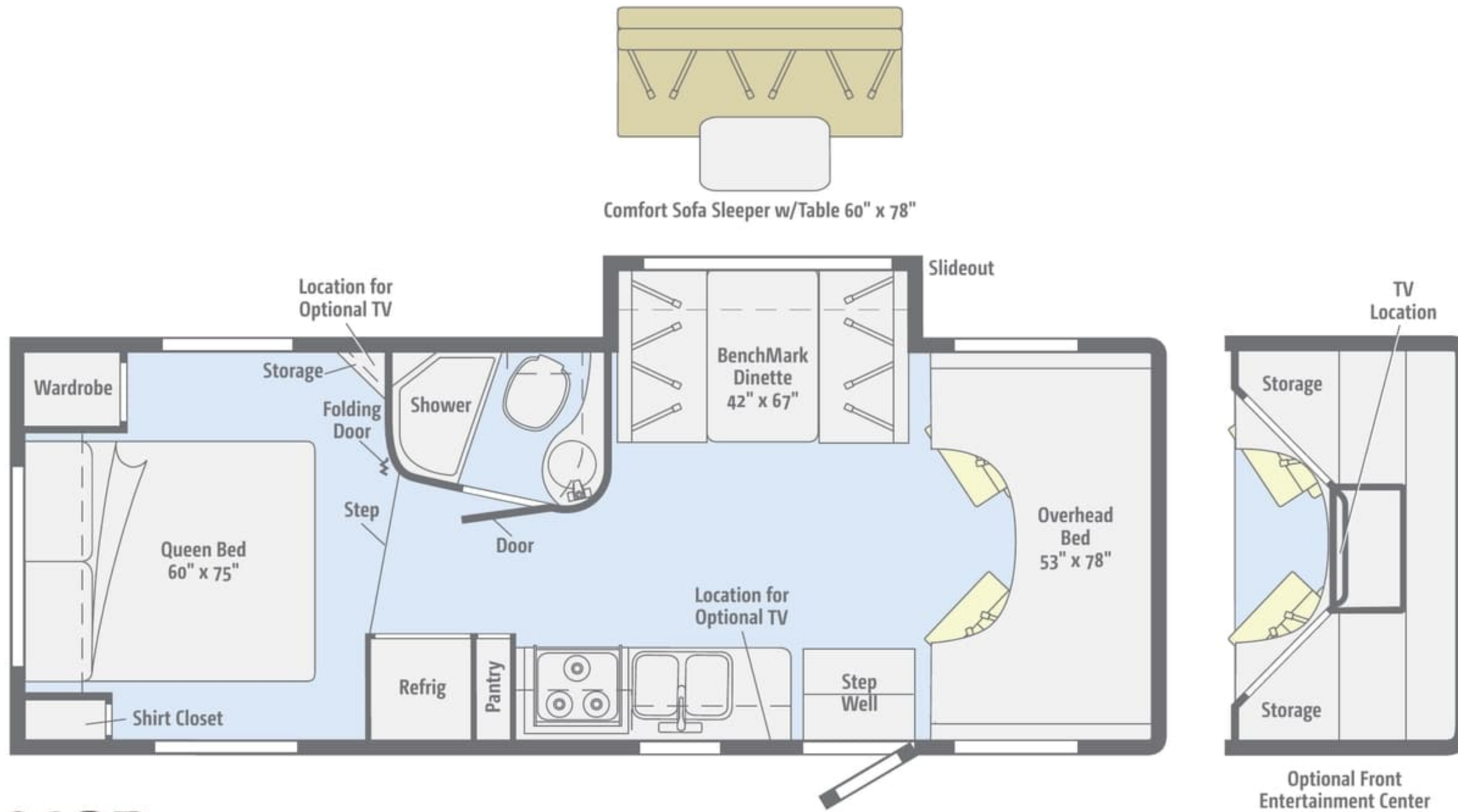
Dimensions shown are for sleeping space only and may vary due to styling differences. Dashed lines denote overhead storage areas. Floorplans and specifications are also available online at [Goltasca.com](http://Goltasca.com).



## 26QP

This practical floorplan offers a front slideout, swivel cab seats, a walk-around queen bed, and the option of a front overhead bunk or entertainment center.

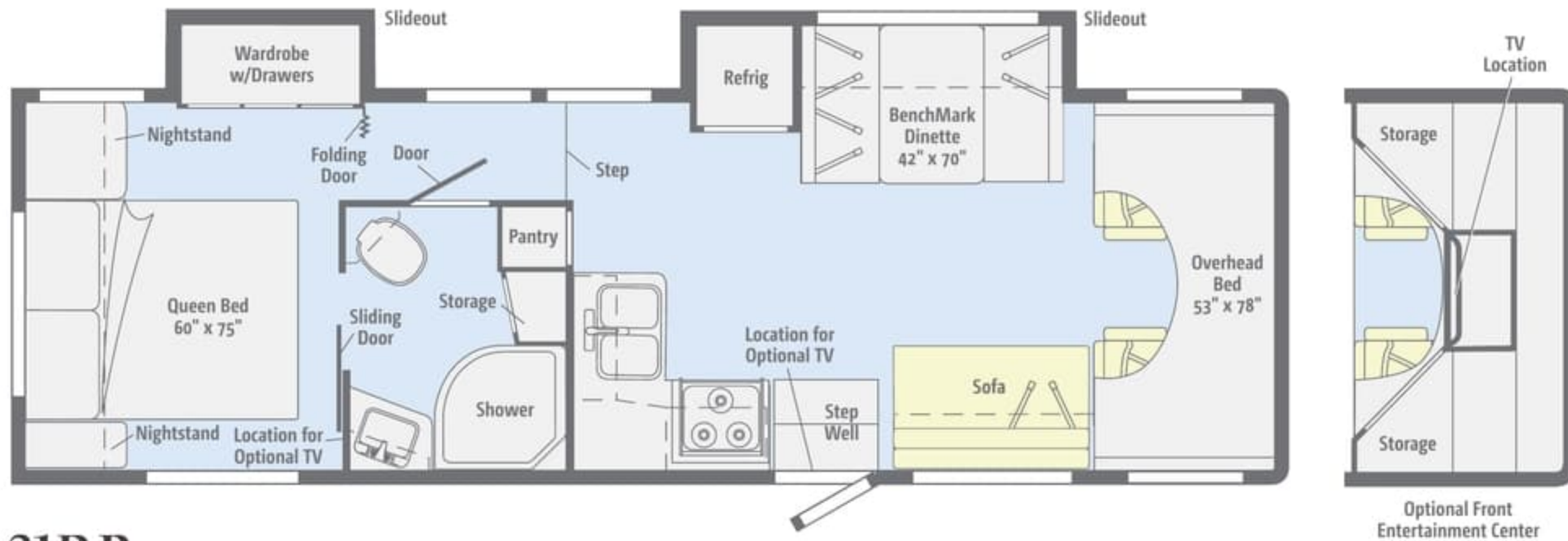
Dimensions shown are for sleeping space only and may vary due to styling differences. Dashed lines denote overhead storage areas. Floorplans and specifications are also available online at [Goltasca.com](http://Goltasca.com).



## 26QP

This practical floorplan offers a front slideout, swivel cab seats, a walk-around queen bed, and the option of a front overhead bunk or entertainment center.

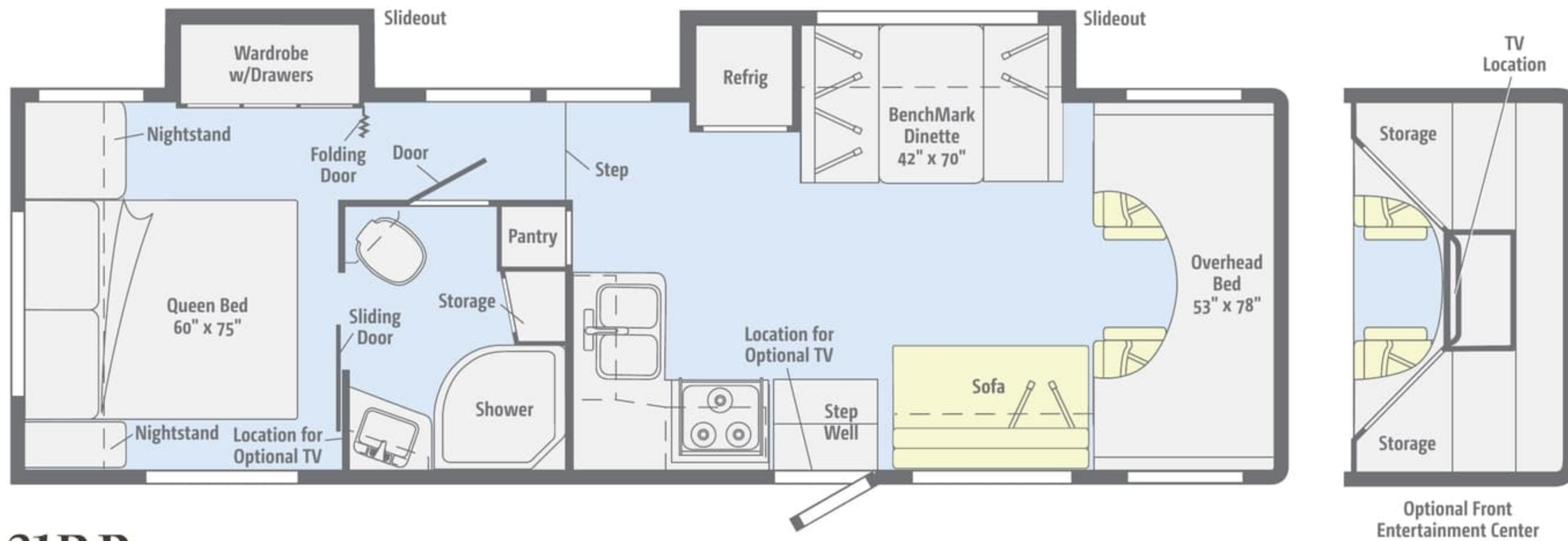
Dimensions shown are for sleeping space only and may vary due to styling differences. Dashed lines denote overhead storage areas. Floorplans and specifications are also available online at [Goltasca.com](http://Goltasca.com).



## 31RP

Large spaces define this floorplan's comfortable, yet practical, layout, with an L-shaped galley, a rear wardrobe slideout, a generous walk-through side bath, and an overhead bunk or optional front entertainment center.

Dimensions shown are for sleeping space only and may vary due to styling differences. Dashed lines denote overhead storage areas. Floorplans and specifications are also available online at [Goltasca.com](http://Goltasca.com).

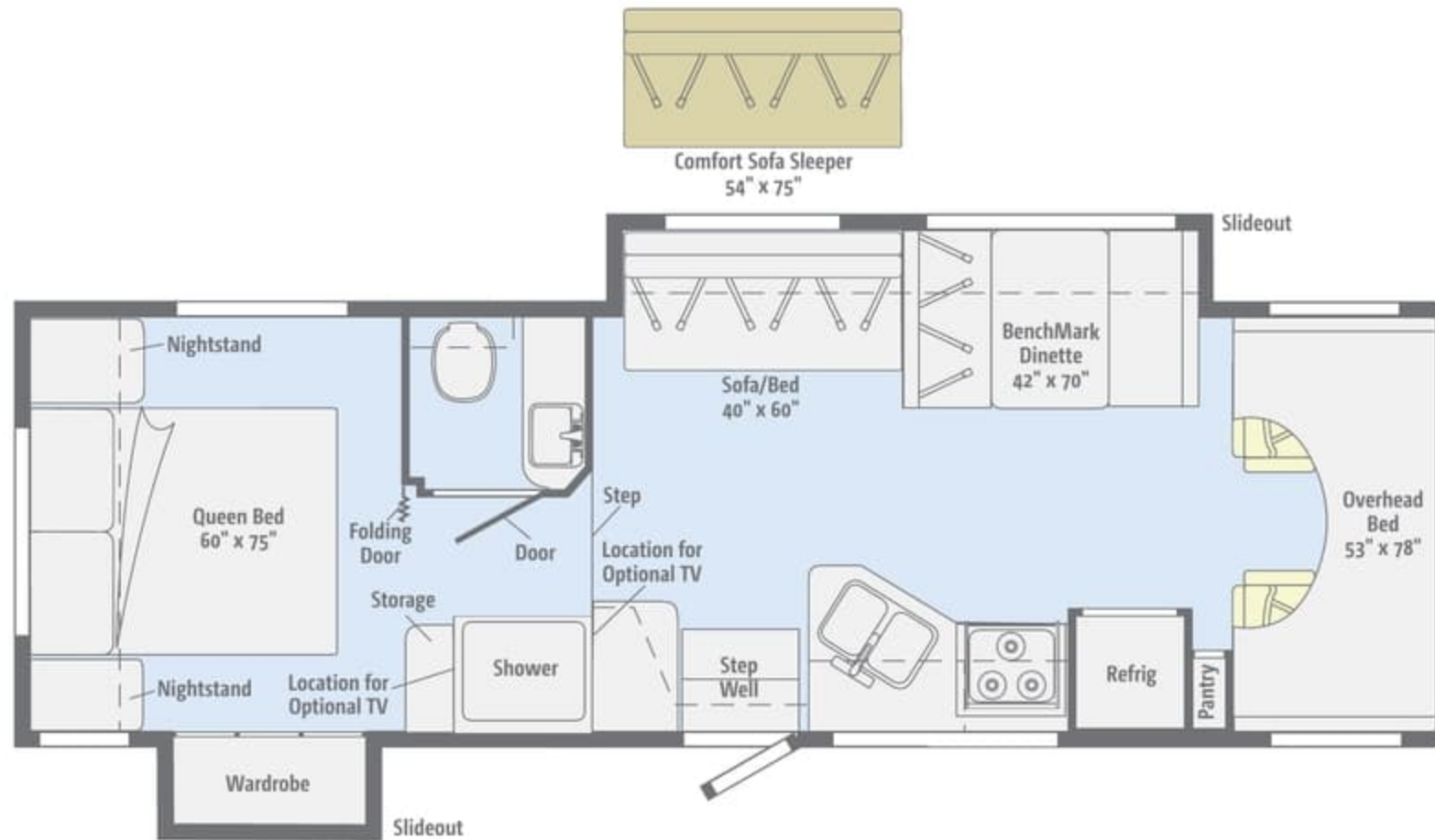


## 31RP

Large spaces define this floorplan's comfortable, yet practical, layout, with an L-shaped galley, a rear wardrobe slideout, a generous walk-through side bath, and an overhead bunk or optional front entertainment center.



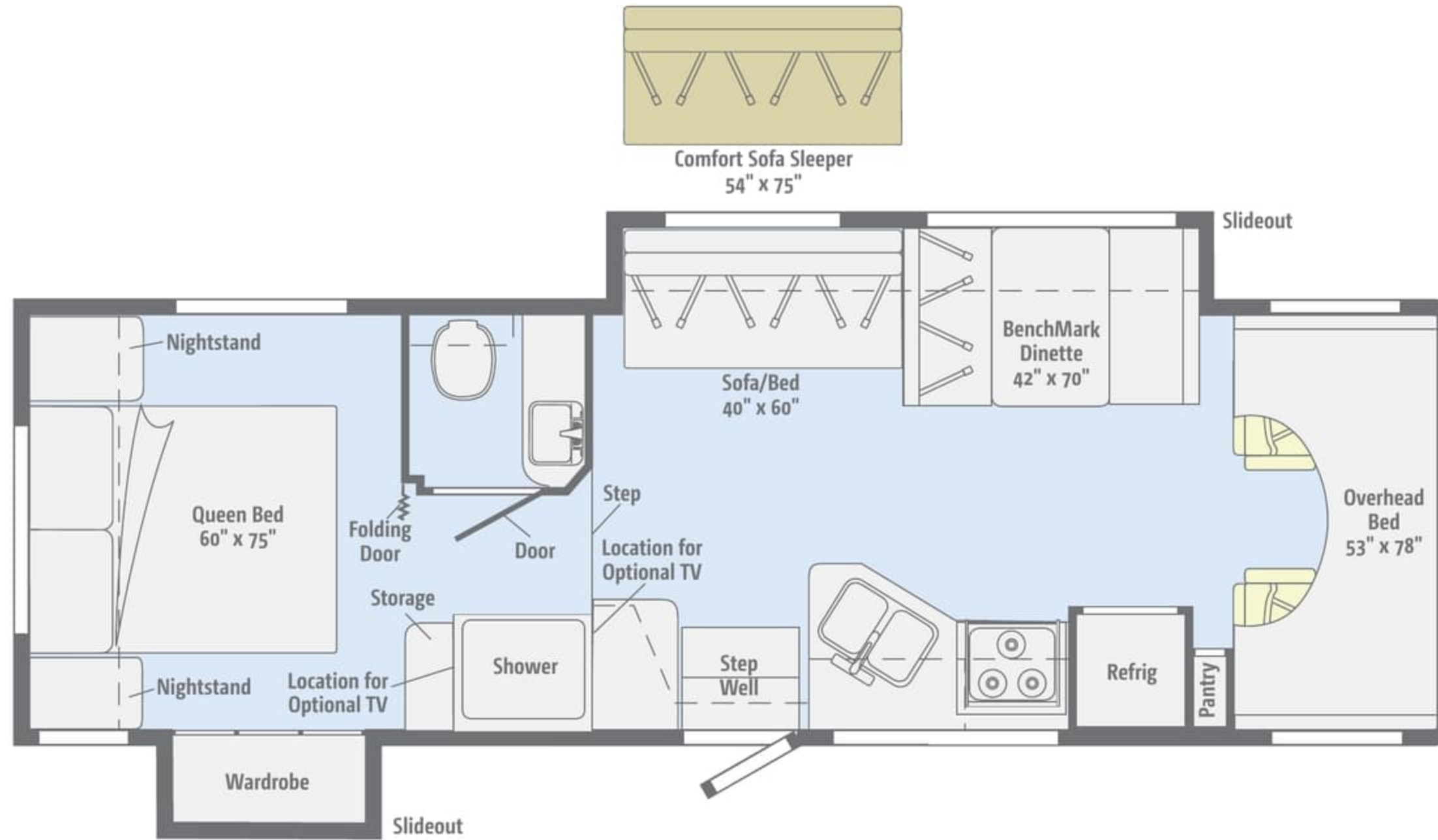
Dimensions shown are for sleeping space only and may vary due to styling differences. Dashed lines denote overhead storage areas. Floorplans and specifications are also available online at [Goltasca.com](http://Goltasca.com).



### 3IWP

This roomy floorplan offers a sofa/bed and a dinette in a large slideout, a spacious master bedroom, a walk-around queen bed, and a split bath.

Dimensions shown are for sleeping space only and may vary due to styling differences. Dashed lines denote overhead storage areas. Floorplans and specifications are also available online at [Goltasca.com](http://Goltasca.com).



## 31WP

This roomy floorplan offers a sofa/bed and a dinette in a large slideout, a spacious master bedroom, a walk-around queen bed, and a split bath.

Choose from three fabric collections and two wood finishes, each with Satin Nickel hardware.

### Inglewood



Main



Ultraleather



Accent



Bedspread



Omnova  
Countertop



Wall Board



Carpet



Vinyl



Forest Cherry



Coffee-Glazed  
Vienna Maple

Winnebago Industries® reserves the right to change décor materials and specifications without notice or obligation.

Choose from three fabric collections and two wood finishes, each with Satin Nickel hardware.

## Inglewood



Main



Ultraleather



Accent



Bedspread



Omnova  
Countertop



Wall Board



Carpet



Vinyl



Forest Cherry



Coffee-Glazed  
Vienna Maple

Winnebago Industries® reserves the right to change décor materials and specifications without notice or obligation.

Choose from three fabric collections and two wood finishes, each with Satin Nickel hardware.

### Brownstone



Main



Ultraleather



Accent



Bedspread



Omnova  
Countertop



Wall Board



Carpet



Vinyl



Forest Cherry



Coffee-Glazed  
Vienna Maple

Winnebago Industries® reserves the right to change décor materials and specifications without notice or obligation.

Choose from three fabric collections and two wood finishes, each with Satin Nickel hardware.

### Brownstone



Main



Ultraleather



Accent



Bedspread



Omnova  
Countertop



Wall Board



Carpet



Vinyl



Forest Cherry



Coffee-Glazed  
Vienna Maple

Winnebago Industries® reserves the right to change décor materials and specifications without notice or obligation.

Choose from three fabric collections and two wood finishes, each with Satin Nickel hardware.

### Hudson



Main



Ultraleather



Accent



Bedspread



Omnova  
Countertop



Wall Board



Carpet



Vinyl



Forest Cherry



Coffee-Glazed  
Vienna Maple

Winnebago Industries® reserves the right to change décor materials and specifications without notice or obligation.

Choose from three fabric collections and two wood finishes, each with Satin Nickel hardware.

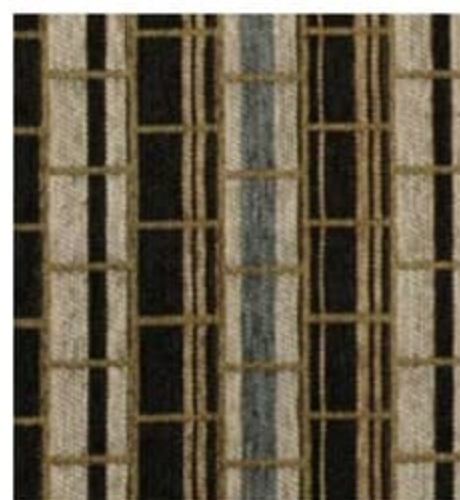
### Hudson



Main



Ultraleather



Accent



Bedspread



Omnova  
Countertop



Wall Board



Carpet



Vinyl



Forest Cherry



Coffee-Glazed  
Vienna Maple

Winnebago Industries® reserves the right to change décor materials and specifications without notice or obligation.



Choose from two deluxe graphics packages and four full-body paint options.



Mesa  
DELUXE GRAPHICS



Charcoal  
DELUXE GRAPHICS

Choose from two deluxe graphics packages and four full-body paint options.



Mesa  
DELUXE GRAPHICS



Charcoal  
DELUXE GRAPHICS

Choose from two deluxe graphics packages and four full-body paint options.



Shadow Gray  
FULL-BODY PAINT



Lava Gray  
FULL-BODY PAINT



Platinum  
FULL-BODY PAINT



Sierra  
FULL-BODY PAINT

Choose from two deluxe graphics packages and four full-body paint options.



Shadow Gray  
FULL-BODY PAINT



Lava Gray  
FULL-BODY PAINT



Platinum  
FULL-BODY PAINT



Sierra  
FULL-BODY PAINT

## Weights & Measures

|  | 26QP     | 31RP     | 31WP     |
|--|----------|----------|----------|
| Length   | 27'11"   | 32'      | 31'8"    |
| Exterior Height <sup>1</sup>                           | 11'1"    | 11'1"    | 11'1"    |
| Exterior Width <sup>2</sup>                            | 8'5.5"   | 8'5.5"   | 8'5.5"   |
| Exterior Storage <sup>3</sup> (cu. ft.)                | 79.2     | 83.7     | 87.2     |
| Awning Length  | 13'      | 16'      | 15'      |
| Interior Height  | 6'10"*** | 6'10"*** | 6'10"*** |
| Interior Width   | 8'       | 8'       | 8'       |
| Freshwater Tank Capacity <sup>4</sup> (gal.)           | 34       | 34       | 34       |
| Water Heater Capacity (gal.)                           | 6        | 6        | 6        |
| Holding Tank Capacity - Black/Gray <sup>4</sup> (gal.) | 30/30    | 43/40    | 47/41    |
| LP Capacity <sup>5</sup> (gal.)                        | 18       | 18       | 18       |
| Fuel Capacity (gal.)                                   | 55       | 55       | 55       |
| GCWR <sup>6</sup> (lbs.)                               | 22,000   | 22,000   | 22,000   |
| GVWR (lbs.)  | 14,500   | 14,500   | 14,500   |
| GAWR - Front (lbs.)                                    | 5,000    | 5,000    | 5,000    |
| GAWR - Rear (lbs.)                                     | 9,600    | 9,600    | 9,600    |
| Wheelbase  | 190"     | 215"     | 220"     |

\*\* 6'4" Rear of coach

## CHASSIS

**Ford® E450 Chassis** 305-hp 6.8L Super-Duty V10 SEFI Triton® engine, TorqShift™ 5-speed automatic transmission w/overdrive, 120-amp. alternator

4-wheel ABS

7-pin trailer wiring

**Trailer Hitch**® 5,000-lb. drawbar/350-lbs. max vertical tongue weight

Stainless steel wheel liners

*Optional Equipment*

Rear auxiliary air springs



Ford® E450 Chassis

## Cab Conveniences

**Radio/Rearview Monitor System** 6" LCD touch screen color monitor, remote, iPod®/MP3 input, color rear camera w/one-way audio

**Cab seats** armrests, lumbar support, and multi-adjustable slide/recline

**3-point seat belts**

**Swivel/slide driver and passenger seats** (26QP)

**12-volt powerpoint**

**Power steering w/tilt and cruise control**

**Power door locks**

**Power mirrors w/defrost**

**Sunvisors**

**Carpet floor mats**

**Dash appliqué**

*Optional Equipment*

**Infotainment Center with Rand McNally RV GPS** 6" color touch screen monitor w/split screen function, color rearview camera, AM/FM/CD/DVD player, iPod/USB connections, remote, SiriusXM™ (subscription not included), Rand McNally Tripmaker™ RV safe & easy routing, amenities & tools, trips & content, turn-by-turn voice guidance, Bluetooth™

## Interior

**Amplified digital TV antenna system**

**Satellite system ready**

**MCD solar/blackout roller shades** (lounge, dinette, and bedroom)

**Mini blinds** (galley)

**Systems monitor panel**

**Powered roof vent** (bath)

**Cab divider curtain** (NA 26QP)

**Front wraparound curtain** (26QP)

**Bunk privacy curtain**

**Bunk ladder**

## Weights & Measures

|  | 26QP     | 31RP     | 31WP     |
|--|----------|----------|----------|
| <b>Length</b>  | 27'11"   | 32'      | 31'8"    |
| <b>Exterior Height<sup>1</sup></b>                           | 11'1"    | 11'1"    | 11'1"    |
| <b>Exterior Width<sup>2</sup></b>                            | 8'5.5"   | 8'5.5"   | 8'5.5"   |
| <b>Exterior Storage<sup>3</sup> (cu. ft.)</b>                | 79.2     | 83.7     | 87.2     |
| <b>Awning Length</b>   | 13'      | 16'      | 15'      |
| <b>Interior Height</b>                                       | 6'10"*** | 6'10"*** | 6'10"*** |
| <b>Interior Width</b>  | 8'       | 8'       | 8'       |
| <b>Freshwater Tank Capacity<sup>4</sup> (gal.)</b>           | 34       | 34       | 34       |
| <b>Water Heater Capacity (gal.)</b>                          | 6        | 6        | 6        |
| <b>Holding Tank Capacity - Black/Gray<sup>4</sup> (gal.)</b> | 30/30    | 43/40    | 47/41    |
| <b>LP Capacity<sup>5</sup> (gal.)</b>                        | 18       | 18       | 18       |
| <b>Fuel Capacity (gal.)</b>                                  | 55       | 55       | 55       |
| <b>GCWR<sup>6</sup> (lbs.)</b>                               | 22,000   | 22,000   | 22,000   |
| <b>GVWR (lbs.)</b>   | 14,500   | 14,500   | 14,500   |
| <b>GAWR - Front (lbs.)</b>                                   | 5,000    | 5,000    | 5,000    |
| <b>GAWR - Rear (lbs.)</b>                                    | 9,600    | 9,600    | 9,600    |
| <b>Wheelbase</b>   | 190"     | 215"     | 220"     |

\*\* 6'4" Rear of coach

## CHASSIS

**Ford® E450 Chassis** 305-hp 6.8L Super-Duty V10 SEFI Triton® engine, TorqShift™ 5-speed automatic transmission w/overdrive, 120-amp. alternator

**4-wheel ABS**

**7-pin trailer wiring**

**Trailer Hitch<sup>6</sup>** 5,000-lb. drawbar/350-lbs. max vertical tongue weight

**Stainless steel wheel liners**

*Optional Equipment*

Rear auxiliary air springs



Ford® E450 Chassis

## Cab Conveniences

**Radio/Rearview Monitor System** 6" LCD touch screen color monitor, remote, iPod®/MP3 input, color rear camera w/one-way audio

**Cab seats** armrests, lumbar support, and multi-adjustable slide/recline

**3-point seat belts**

**Swivel/slide driver and passenger seats** (26QP)

**12-volt powerpoint**

**Power steering w/tilt and cruise control**

**Power door locks**

**Power mirrors w/defrost**

**Sunvisors**

**Carpet floor mats**

**Dash appliqué**

*Optional Equipment*

**Infotainment Center with Rand McNally RV GPS** 6" color touch screen monitor w/split screen function, color rearview camera, AM/FM/CD/DVD player, iPod/USB connections, remote, SiriusXM™ (subscription not included), Rand McNally Tripmaker™, RV safe & easy routing, amenities & tools, trips & content, turn-by-turn voice guidance, Bluetooth™

## Interior

**Amplified digital TV antenna system**

**Satellite system ready**

**MCD solar/blackout roller shades** (lounge, dinette, and bedroom)

**Mini blinds** (galley)

**Systems monitor panel**

**Powered roof vent** (bath)

**Cab divider curtain** (NA 26QP)

**Front wraparound curtain** (26QP)

**Bunk privacy curtain**

**Bunk ladder**

## Tinted windows

- Powered ventilator fan (lounge area)
- Key-activated slideroom master lock switch
- Soft vinyl ceiling
- LED lighting

### *Optional Equipment*

26" HDTV, stereo system w/AM/FM radio, alarm clock, CD/DVD player and video selection system

Carpet in lounge, dining area, and bedroom

**Front Overhead Entertainment Center** 32" HDTV w/remote, home theater sound system w/AM/FM receiver, DVD player, amplifier, speakers, subwoofer, and video selection system (NA 31WP)

**Entertainment System** 32" HDTV w/remote, swivel and telescoping bracket, home theater sound system w/AM/FM receiver, DVD player, amplifier, video selection system, speakers (5), and subwoofer (31WP)

Tinted, dual-glazed, thermo-insulated windows

## Galley

- Thermo-formed laminate countertops
- Norcold® double-door refrigerator/freezer
- Microwave oven
- 3-burner range top w/storage below
- Vented range hood
- Range cover
- Cold water filtration system

### *Optional Equipment*

- 3-burner range w/oven
- Microwave/convection oven

## Bath

- Thermo-formed laminate countertop
- Retractable, self-cleaning shower screen (26QP)
- Textured glass shower door (31RP, 31WP)
- Flexible showerhead
- Skylight
- Water pump switch
- Porcelain toilet

## Bedroom

Queen bed w/foam mattress and bedspread, pillows, and shams

### *Optional Equipment*

22" HDTV

## Exterior

- Porch light
- Stepwell light
- Fiberglass running boards
- Rear mud flaps
- Powered patio awning w/LED lights
- Ladder
- Recessed rotocast storage compartments drain plug, cover/30" x 72" folding table
- Premium high-gloss sidewall skin

## Heating & Cooling System

- 14,800 BTU roof-mounted air conditioner
- 30,000 BTU low-profile furnace

## Electrical System

- AC/DC load center, 45-amp. converter/charger
- 30-amp. power cord
- 4,000-watt Cummins Onan® MicroQuiet™ gas generator
- TV jack and DC receptacle near entrance door
- Two deep-cycle, Group 31 batteries on pull-out tray
- Coach battery disconnect system
- Auxiliary start circuit
- Automatic dual-battery charge control

### *Optional Equipment*

1,000-watt DC/AC inverter

## Plumbing System

- City water hookup
- Lockable water tank fill
- On-demand water pump
- 6-gallon LP water heater w/electronic ignition
- Winterization Package water heater bypass valve and siphon tube
- TrueLevel™ holding-tank monitoring system
- Permanent-mount LP tank w/gauge

### *Optional Equipment*

- Heated electric drainage system
- 6-gallon 110 V/LP water heater w/electronic ignition, rear auto heater, and Energy Management System
- Exterior wash station w/lighted pump switch

## Safety

- Child seat tether anchor
- LP, smoke and carbon monoxide detectors
- 10 BC fire extinguisher
- Ground fault interrupter
- High-mount brake lamp

## Warranty<sup>7</sup>

12-month/15,000-mile basic limited warranty<sup>8</sup>

36-month/36,000-mile limited warranty on structure<sup>8</sup>

10-year limited parts-and-labor warranty on roof skin<sup>8</sup>

- The height of each model is measured to the top of the tallest standard feature and is based on the curb weight of a typically equipped unit. The actual height of your vehicle may vary by several inches depending on chassis or equipment variations. Please contact your dealer for further information.
  - Impulse and Impulse Silver floorplans feature a wide-body design – over 96." In making your purchase decision, you should be aware that some states restrict access on some or all state roads to 96" in body width. Before making your purchase decision, you should confirm the road usage laws in the states of interest to you.
  - The load capacity of your motorhome is designated by weight, not by volume, so you cannot necessarily use all available space when loading your motorhome.
  - Capacities are based on measurements prior to tank installation. Slight capacity variations can result due to installation applications.
  - Capacities shown are tank manufacturer's listed water capacity (W.C.). Actual filled LP capacity is 80% of listing due to overfilling prevention device on tank.
  - Actual towing capacity is dependent on your particular loading and towing circumstances which includes the GVWR, GAWR, and GCWR, as well as adequate trailer brakes. Please refer to the Operator's Manual of your vehicle for further towing information.
  - See separate chassis warranty.
  - See your dealer for complete warranty information.
- NA Not Available

Not all items available in combination. See dealer for details. Winnebago Industries® continuing program of product improvement makes specifications, equipment, model availability, and prices subject to change without notice. Published content reflects the most current product information at time of printing. Please consult your dealer for individual vehicle features and specifications.

## Tinted windows

- Powered ventilator fan (lounge area)
- Key-activated slideroom master lock switch
- Soft vinyl ceiling
- LED lighting

### *Optional Equipment*

- 26" HDTV, stereo system w/AM/FM radio, alarm clock, CD/DVD player and video selection system
- Carpet in lounge, dining area, and bedroom
- Front Overhead Entertainment Center 32" HDTV w/remote, home theater sound system w/AM/FM receiver, DVD player, amplifier, speakers, subwoofer, and video selection system (NA 31WP)
- Entertainment System 32" HDTV w/remote, swivel and telescoping bracket, home theater sound system w/AM/FM receiver, DVD player, amplifier, video selection system, speakers (5), and subwoofer (31WP)

## Tinted, dual-glazed, thermo-insulated windows

## Galley

- Thermo-formed laminate countertops
- Norcold® double-door refrigerator/freezer
- Microwave oven
- 3-burner range top w/storage below
- Vented range hood
- Range cover
- Cold water filtration system

### *Optional Equipment*

- 3-burner range w/oven
- Microwave/convection oven

## Bath

- Thermo-formed laminate countertop
- Retractable, self-cleaning shower screen (26QP)
- Textured glass shower door (31RP, 31WP)
- Flexible showerhead
- Skylight
- Water pump switch
- Porcelain toilet

## Bedroom

- Queen bed w/foam mattress and bedspread, pillows, and shams

### *Optional Equipment*

- 22" HDTV

## Exterior

- Porch light
- Stepwell light
- Fiberglass running boards
- Rear mud flaps
- Powered patio awning w/LED lights
- Ladder
- Recessed rotocast storage compartments drain plug, cover/30" x 72" folding table
- Premium high-gloss sidewall skin

## Heating & Cooling System

- 14,800 BTU roof-mounted air conditioner
- 30,000 BTU low-profile furnace

## Electrical System

- AC/DC load center, 45-amp. converter/charger
- 30-amp. power cord
- 4,000-watt Cummins Onan® MicroQuiet™ gas generator
- TV jack and DC receptacle near entrance door
- Two deep-cycle, Group 31 batteries on pull-out tray
- Coach battery disconnect system
- Auxiliary start circuit
- Automatic dual-battery charge control
- Optional Equipment*
- 1,000-watt DC/AC inverter

## Plumbing System

- City water hookup
- Lockable water tank fill
- On-demand water pump
- 6-gallon LP water heater w/electronic ignition
- Winterization Package water heater bypass valve and siphon tube
- TrueLevel™ holding-tank monitoring system
- Permanent-mount LP tank w/gauge

### *Optional Equipment*

- Heated electric drainage system
- 6-gallon 110 V/LP water heater w/electronic ignition, rear auto heater, and Energy Management System
- Exterior wash station w/lighted pump switch

## Safety

- Child seat tether anchor
- LP, smoke and carbon monoxide detectors
- 10 BC fire extinguisher
- Ground fault interrupter
- High-mount brake lamp

## Warranty<sup>7</sup>

- 12-month/15,000-mile basic limited warranty<sup>8</sup>
- 36-month/36,000-mile limited warranty on structure<sup>8</sup>
- 10-year limited parts-and-labor warranty on roof skin<sup>8</sup>

- The height of each model is measured to the top of the tallest standard feature and is based on the curb weight of a typically equipped unit. The actual height of your vehicle may vary by several inches depending on chassis or equipment variations. Please contact your dealer for further information.
- Impulse and Impulse Silver floorplans feature a wide-body design – over 96." In making your purchase decision, you should be aware that some states restrict access on some or all state roads to 96" in body width. Before making your purchase decision, you should confirm the road usage laws in the states of interest to you.
- The load capacity of your motorhome is designated by weight, not by volume, so you cannot necessarily use all available space when loading your motorhome.
- Capacities are based on measurements prior to tank installation. Slight capacity variations can result due to installation applications.
- Capacities shown are tank manufacturer's listed water capacity (W.C.). Actual filled LP capacity is 80% of listing due to overfilling prevention device on tank.
- Actual towing capacity is dependent on your particular loading and towing circumstances which includes the GVWR, GAWR, and GCWR, as well as adequate trailer brakes. Please refer to the Operator's Manual of your vehicle for further towing information.
- See separate chassis warranty.
- See your dealer for complete warranty information.

NA Not Available  
 Not all items available in combination. See dealer for details.  
 Winnebago Industries® continuing program of product improvement makes specifications, equipment, model availability, and prices subject to change without notice. Published content reflects the most current product information at time of printing. Please consult your dealer for individual vehicle features and specifications.



GOITASCA.COM  
HAS ALL THE ANSWERS



Visit **GoItasca.com** on your computer, smartphone or tablet for the latest product information and updates.

COMMITTED TO SERVICE

 **PREFERRED CARE PROGRAM**

We back our motorhomes with best-in-class support both before and after the sale:

- 12-month/15,000-mile basic limited warranty
- 36-month/36,000-mile limited warranty on structure
- 10-year limited parts-and-labor warranty on roof skin
- Complimentary 24-hour roadside assistance program



- TripSaver® Fast Track Parts guarantees that in-stock warranty parts ship directly to your dealer within 24 hours
- National dealer service network



JOIN THE CLUB, JOIN THE FUN

As an Itasca motorhome owner, you are invited to join the WIT Club. It's a great way to take full advantage of your new coach and meet fun-loving WIT Club members from across the country who make motorhome adventures a way of life.



**Members enjoy:**

- Caravans and rallies
- Newsletters
- Local and state group activities
- RV travel benefits

See more at **WITclub.com**



GRAND NATIONAL RALLY

In 1969, two things happened: Neil Armstrong took mankind's first steps on the moon, and Winnebago Industries' WIT Club launched its first Grand National Rally in Forest City, Iowa. Every year since then, thousands of rally-goers connect with old friends to enjoy concerts, tours, activities, and more. Blast off for an adventurous week in July to celebrate 45 years of interstate land roving at the 2014 "Out of This World" Grand National Rally. It's a mission you'll never forget!

GOITASCA.COM  
HAS ALL THE ANSWERS



Visit **Goltasca.com** on your computer, smartphone or tablet for the latest product information and updates.

COMMITTED TO SERVICE

 **PREFERRED CARE PROGRAM**

We back our motorhomes with best-in-class support both before and after the sale:

- 12-month/15,000-mile basic limited warranty
- 36-month/36,000-mile limited warranty on structure
- 10-year limited parts-and-labor warranty on roof skin
- Complimentary 24-hour roadside assistance program



**TRIP Saver**  
FAST TRACK PARTS

- TripSaver® Fast Track Parts guarantees that in-stock warranty parts ship directly to your dealer within 24 hours
- National dealer service network



**WIT CLUB**

JOIN THE CLUB, JOIN THE FUN

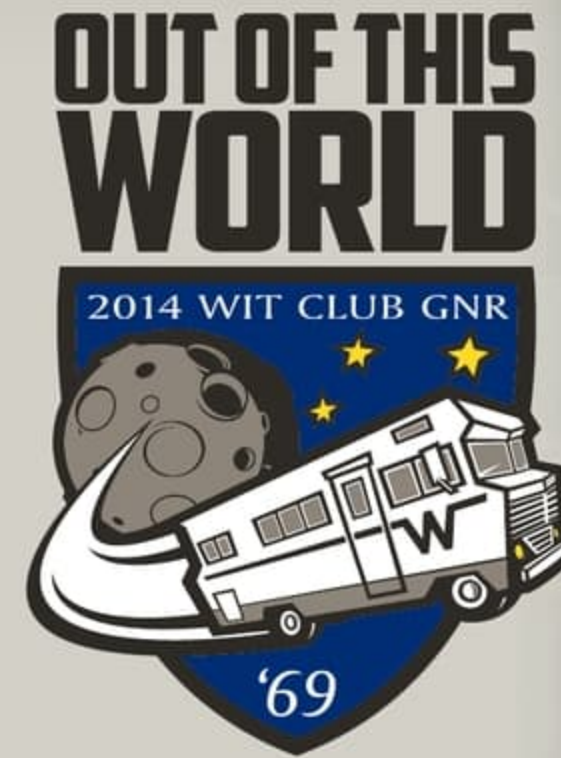
As an Itasca motorhome owner, you are invited to join the WIT Club. It's a great way to take full advantage of your new coach and meet fun-loving WIT Club members from across the country who make motorhome adventures a way of life.



**Members enjoy:**

- Caravans and rallies
- Newsletters
- Local and state group activities
- RV travel benefits

See more at **WITclub.com**



GRAND NATIONAL RALLY

In 1969, two things happened: Neil Armstrong took mankind's first steps on the moon, and Winnebago Industries' WIT Club launched its first Grand National Rally in Forest City, Iowa. Every year since then, thousands of rally-goers connect with old friends to enjoy concerts, tours, activities, and more. Blast off for an adventurous week in July to celebrate 45 years of interstate land roving at the 2014 "Out of This World" Grand National Rally. It's a mission you'll never forget!