

Navion

WINNEBAGO



Why Navion?

- Mercedes-Benz® Sprinter chassis
- Available cabover bunk
- Maximum usability with SmartSpace™ design
- Available Infotainment Center with Rand McNally RV GPS
- Available dual-pane Euro windows with screen and insulated shade
- Primera® swivel cab seats
- Powered patio awning with LED lighting
- MCD solar/blackout roller shades
- Available Mobileye® Collision Avoidance System
- Available bike rack
- Energy-efficient LED lighting



On the Cover: 24J Bay Mist Full-Body Paint

24J Zinc with High-Gloss Marbella Cherry/Canvas Cabinetry

In a Class by Itself

When you want the mobility of a Class C coach with amenities, look no further than the Winnebago® Navion®. It takes full advantage of the Sprinter Chassis platform to present many of the finest motorhome features in a compact footprint. The 24G has been completely redesigned with a more spacious lounge that gives you the option of a large dinette or comfortable queen size sofa/sleeper. If you want

something with a little more sleeping versatility, select the 24V with the Flex Bed system that easily converts between a queen bed or two twin beds. And if size is what matters, the U-shaped dinette in the 24J opens up to a massive 80" sleeping space. When it comes to RV lifestyle, the right look and a comfortable interior make all the difference. See what you've been missing in the Winnebago Navion.



2016 MotorHome
READERS' CHOICE
WINNER
Class C

Fiberglass Roof The crowned, one-piece fiberglass roof is backed by a 10-year limited parts-and-labor roof skin warranty.

Interlocking Joints Specially engineered interlocking joints connect the floor, sidewalls and roof where competitors often rely on simple screws to bear the weight.



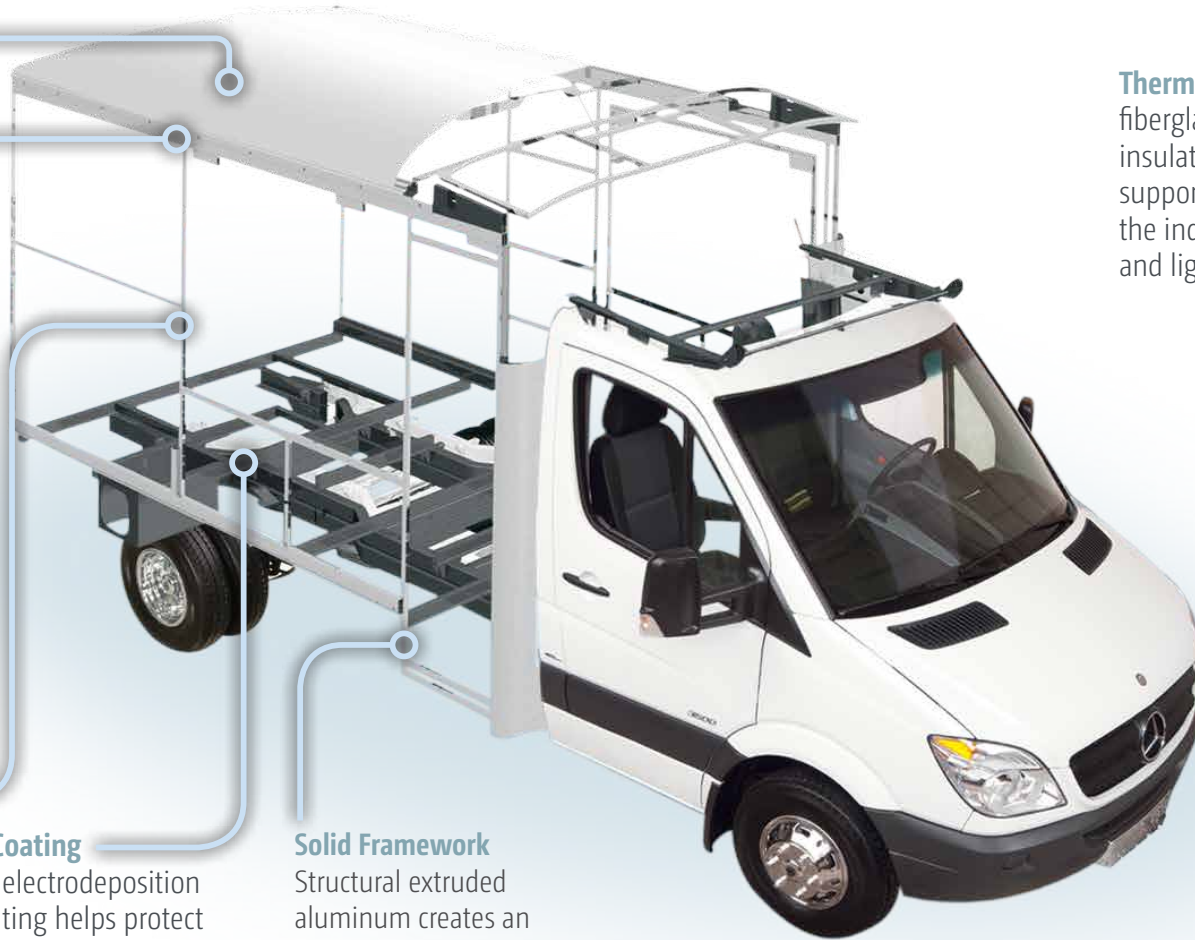
Embedded Steel Metal substructures embedded into the sidewall provide solid attachment points to keep cabinets and appliances mounted securely in place.

E-Coating An electrodeposition coating helps protect critical steel components.

Solid Framework Structural extruded aluminum creates an extremely strong and solid structural framework.

Thermo-Panel® Sidewalls By layering fiberglass and high-density block foam insulation with welded aluminum support structures, we create some of the industry's strongest, most durable and lightweight sidewalls.

Laser-Cut Tubing Precision laser cutters create precise joints in structural steel that are stronger and require less welding.



SUPER STRUCTURE®

BUILT TO LAST

Every coach—from our smallest Class C to our largest diesel-pusher model—is built to Winnebago's® legendary SuperStructure® construction design. It's a process developed and refined over more than 50 years of building some of the strongest, most durable coaches in the industry.

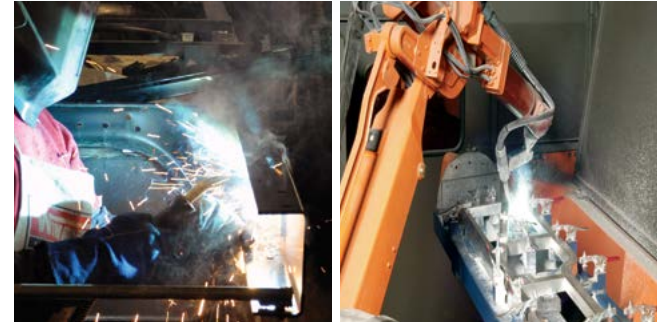
TESTING Before rolling out of our factories, every coach undergoes an extensive 113-point inspection. Each coach also passes a high-pressure water test that simulates rain at a rate of 50-inches per hour to check for leaks. During the design process, our computer simulations, physical testing center, and rigorous test track ensure each model is built to last.



DETAILS At Winnebago, we treat the features you can't see with the same care as the ones you can. Look in the access panels of some of our competitors' coaches and you'll see loose insulation and wires haphazardly strewn about. Winnebago maintains a clean fit and finish throughout so your coach will last for the long haul.



BUILT IN-HOUSE We process and finish key aluminum parts. We rotocast our own plastic components. In fact, we manufacture most of our own parts so they are designed to fit the space, rather than fitting the space to an awkward off-the-shelf component size.

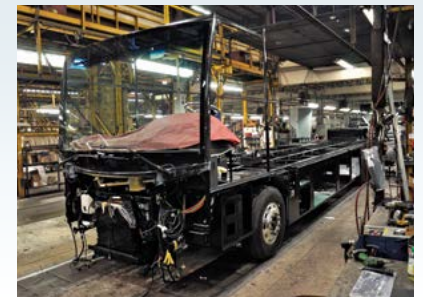


**SUPER
STRUCTURE**
BUILT TO LAST

Visit BetterBuiltRVs.com to gain real insight into what goes into a Winnebago motorhome.

TAKE A TOUR We're proud of our processes, state-of-the-art facilities, and the people who make Winnebago number one. We invite you to visit our complex in Forest City, Iowa, for a firsthand look at the dedication and technology behind every motorhome we build.

Call (641) 585-6936 or (800) 643-4892 or visit us online at Winnebagolnd.com/company/visit for more information.

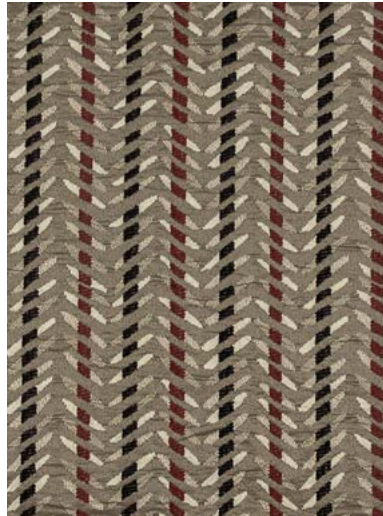


Choose from four fabric collections and two wood finishes.

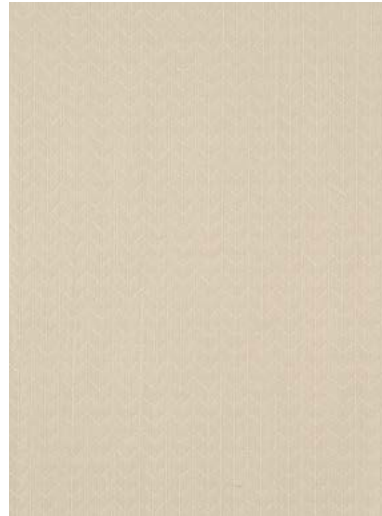
Arrow



Primera



Feature Fabric



Bed Cover



Laminate Countertop



Vinyl Flooring



Aosta Cherry/Canvas*



High-Gloss
Marbella Cherry/Canvas*

**High-gloss finish in select areas*

Winnebago® reserves the right to change décor materials and specifications without notice or obligation.

Choose from four fabric collections and two wood finishes.

Tidewater



Primera



Feature Fabric



Bed Cover



Laminate Countertop



Vinyl Flooring



Aosta Cherry/Canvas*



High-Gloss
Marbella Cherry/Canvas*

**High-gloss finish in select areas*

Winnebago reserves the right to change décor materials and specifications without notice or obligation.*

Choose from four fabric collections and two wood finishes.

Honeycomb



Primera



Feature Fabric



Bed Cover



Laminate Countertop



Vinyl Flooring



Aosta Cherry/Canvas*



High-Gloss
Marbella Cherry/Canvas*

**High-gloss finish in select areas*

Winnebago reserves the right to change décor materials and specifications without notice or obligation.*

Choose from four fabric collections and two wood finishes.

Zinc



Primera



Feature Fabric



Bed Cover



Laminate Countertop



Vinyl Flooring



Aosta Cherry/Canvas*



High-Gloss
Marbella Cherry/Canvas*

**High-gloss finish in select areas*

Winnebago reserves the right to change décor materials and specifications without notice or obligation.*

Choose from standard deluxe graphics or upgrade to available full-body paint.



Copper Canyon
DELUXE GRAPHICS



Carbon Red
DELUXE GRAPHICS

Choose from standard deluxe graphics or upgrade to available full-body paint.



Coffee
FULL-BODY PAINT



Tuscan Sun
FULL-BODY PAINT



Pumpkin Spice
FULL-BODY PAINT

Choose from standard deluxe graphics or upgrade to available full-body paint.



Bay Mist
FULL-BODY PAINT



Iris
FULL-BODY PAINT

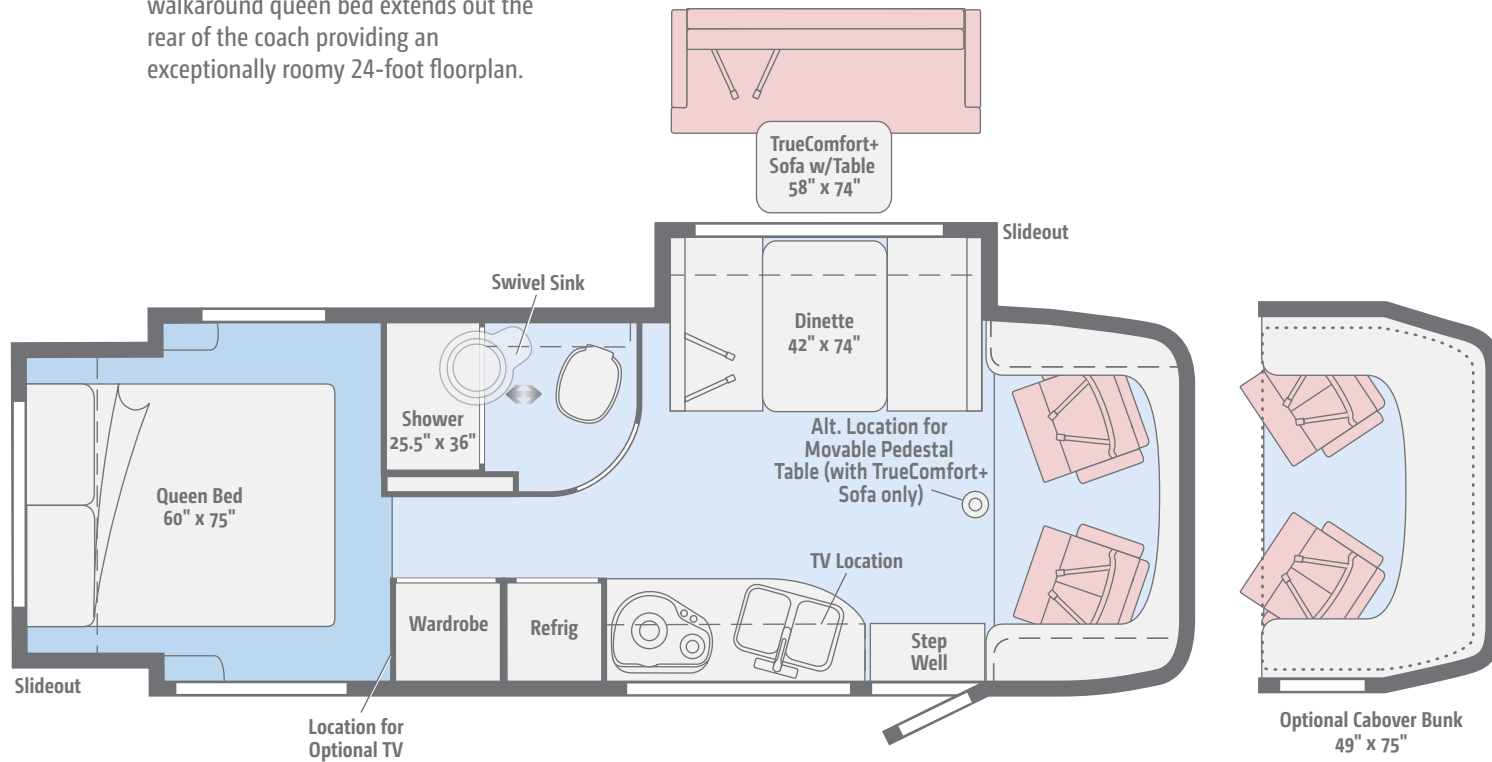


Beachwood
FULL-BODY PAINT


[Click here to explore this floorplan's web page.](#)

24G

In addition to the lounge slideout, the walkaround queen bed extends out the rear of the coach providing an exceptionally roomy 24-foot floorplan.

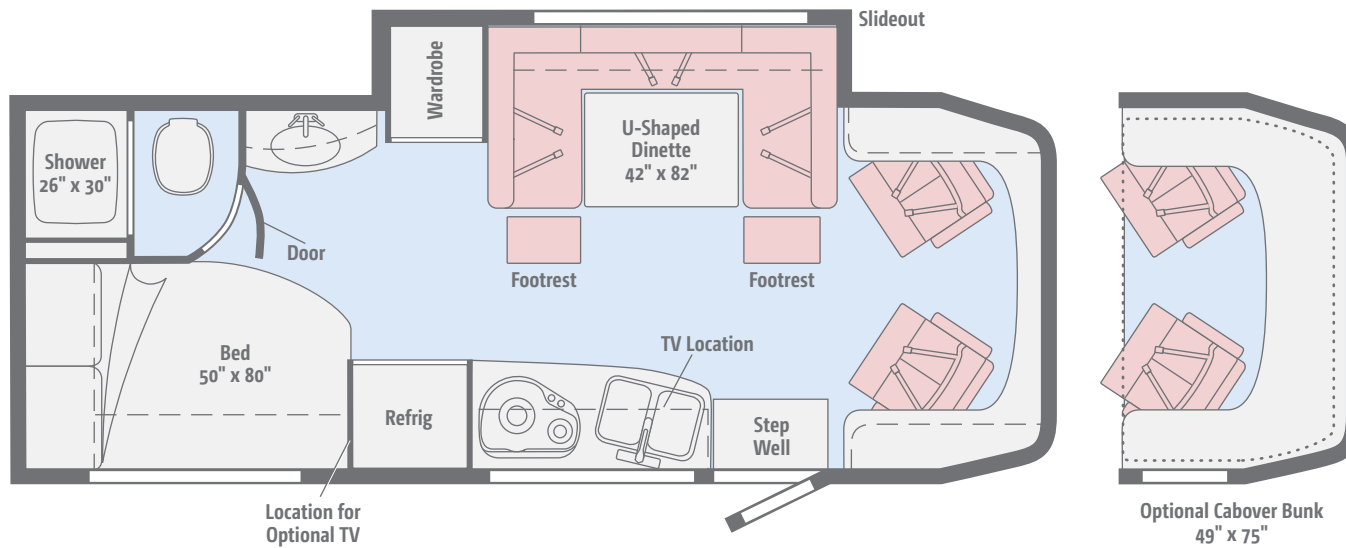


Primera	Carpet	Vinyl

 [Click here to explore this floorplan's web page.](#)

24J

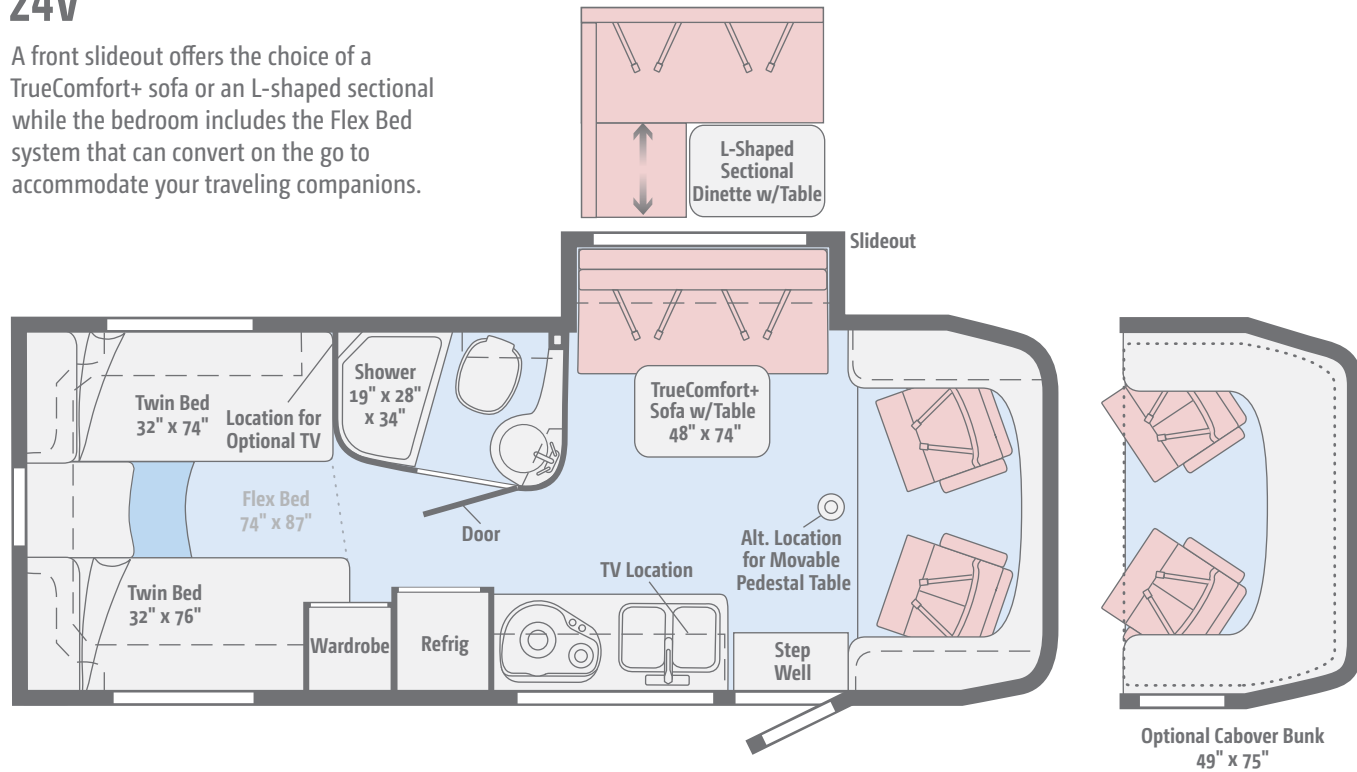
A generous slideout holding the U-shaped dinette creates a spacious gathering space, complemented by the swivel cab seats.



[Click here to explore this floorplan's web page.](#)

24V

A front slideout offers the choice of a TrueComfort+ sofa or an L-shaped sectional while the bedroom includes the Flex Bed system that can convert on the go to accommodate your traveling companions.



Weights & Measures	24G	24J	24V
Length	25'7"	25'7"	25'7"
Exterior Height ¹	11'1"	11'1"	11'1"
Exterior Width ²	7'6"	7'6"	7'6"
Exterior Storage ³ (cu. ft.)	53	48	43
Awning Length	16'	16'	16'
Interior Height	6'8"	6'8"	6'8"
Interior Width	7'3"	7'3"	7'3"
Freshwater Tank Capacity ⁴ (gal.)	31	32	31
Water Heater Capacity (gal.)	Continuous	6	6
Holding Tank Capacity - Black/Gray ⁴ (gal.)	36/40	34/40	36/36
LP Capacity ⁵ (gal.)	13	13	13
Fuel Capacity (gal.)	26.4	26.4	26.4
GCWR ⁶ (lbs.)	15,250	15,250	15,250
GVWR (lbs.)	11,030	11,030	11,030
GAWR - Front (lbs.)	4,410	4,410	4,410
GAWR - Rear (lbs.)	7,720	7,720	7,720
Wheelbase	170"	170"	170"
Seating Capacity	3	5	4

Mercedes-Benz® Sprinter Chassis

3.0L 6-cylinder, 188-hp, turbo-diesel engine, 5-speed automatic tip-shift transmission, 220-amp. alternator

Adaptive ESP® technology

Hydraulic brakes w/ABS

Trailer Hitch⁵ 5,000-lb. drawbar/500-lb. maximum vertical tongue weight w/7-pin connector

Stainless steel wheel liners (24J, 24V)

ALCOA forged aluminum wheels (24G)

OPTIONAL EQUIPMENT

Stylized chrome wheels (24J, 24V)

ALCOA forged aluminum wheels (24J, 24V)

2-point electric stabilizing system (Requires ALCOA forged aluminum wheels)

Cab Conveniences

Radio/Rearview Monitor System DVD receiver with 6.2" LCD color touch screen, handheld remote, iPod®/MP3 input, rear color camera, Bluetooth®, SiriusXM® (includes 90-day trial subscription), Spotify®, AppRadio One

Cab seats armrest, adjustable lumbar support, headrest, recline, swivel and slide

Airbags driver and passenger

3-point seat belts

Power door locks w/remote

Power windows

Power mirrors w/defrost and turn signals

Cruise control

Chassis/house battery radio power switch

Power steering w/tilt wheel

Sunvisors

12-volt powerpoints

Pleated windshield blinds

Privacy curtain (cab windows)

Dash appliqué package

OPTIONAL EQUIPMENT

Large Screen Infotainment Center with Rand McNally RV GPS 9" touch screen color monitor w/split screen function, Rand McNally RV GPS safe & easy routing, amenities & tools, trips & content, turn-by-turn voice guidance, AM/FM radio w/handheld remote, SiriusXM® (includes 90-day trial subscription), iPod/iPhone® audio integration, Bluetooth®, color rearview camera, USB connection

2 cab seat lounge cushions

Sliding, pleated windshield blinds

Mobileye® Collision Avoidance System

JBL premium audio tuned 180-watt DSP amplifier with 5 speakers including subwoofer

Interior

Stereo System AM/FM, alarm clock, CD/DVD player, input jack, Bluetooth®, 2 speakers and subwoofer

28" HDTV

LED lights

Satellite system ready

Monitor panel

Amplified digital HDTV antenna

Roof vent w/electric lift and ventilator fan (NA w/available powered skylight)

Mini blinds (galley)

Skylight w/shade

MCD solar/blackout roller shades

Tinted coach windows

Soft vinyl ceiling

Vinyl flooring throughout (24G front to bedroom)

Assist bar

USB charger

Interior Upgrade Package frosted galley backsplash w/accent lighting, 2 sink covers

OPTIONAL EQUIPMENT

Powered skylight/roof vent w/sliding screen and pleated shade

Dual-pane acrylic windows

Sofa Sleeper (24G)

Galley

Laminate countertops

Microwave/convection oven w/touch control

2-burner range top w/glass cover

Norcold® double-door refrigerator/freezer

Cold water filtration system

Water-pump switch w/light

Bath

Shower 25.5"x36" (24G)

Shower 26"x30" (24J)

Shower 19"x28"x34" (24V)

Retractable, self-cleaning shower screen

Shower light w/wall switch

Flexible showerhead

Shower Skylight (24G includes molded track for LED rope light)

Porcelain toilet w/foot pedal and sprayer (24J, 24V)

Porcelain toilet w/electric flush (24G)

Powered roof vent

Towel ring(s)

Towel bar(s)

Tissue holder

Robe hook(s) (24J)

Medicine cabinet

OPTIONAL EQUIPMENT

Powered ventilator fan

Bedroom

Corner bed w/headboard, foam mattress, mattress cover, and access to storage below (24J)

Queen bed w/memory foam mattress and mattress cover (24G)

Flex Bed System twin beds/queen bed w/foam mattresses and access to storage below (24V)

MCD blackout roller shades

Room divider curtain (NA 24G)

OPTIONAL EQUIPMENT

24" HDTV

Froli deluxe sleep system (NA 24G)

Exterior

Automatic entrance door step(s)

LED porch light w/interior switch

Stepwell light w/interior switch

Front and rear mud flaps

Premium high-gloss skin

Powered patio awning w/LED lights (full-body paint option includes metal wrap)

Lighted storage compartments

Exterior speakers

Ladder (NA 24G)

OPTIONAL EQUIPMENT

Bike rack

Heating & Cooling

15,000 BTU air conditioner

20,000 BTU low-profile furnace

OPTIONAL EQUIPMENT

15,000 BTU air conditioner w/heat pump

Electrical System

Service Center light, cable TV input, 30-amp. power cord, portable satellite dish hookup, QuickPort® service connection hatch

Auxiliary start circuit

Exterior AC duplex

Exterior antenna jack

Battery disconnect system (coach)

Automatic dual-battery charge control

AC/DC load center, 45-amp. converter/charger

2 deep-cycle, Group 24 RV batteries

3,600-watt Cummins Onan MicroQuiet™ LP generator

1,000-watt DC/AC inverter

OPTIONAL EQUIPMENT

3,200-watt Cummins Onan® diesel generator

100-watt solar panel/battery charger w/controller, junction box, and plug for additional portable solar panel

Plumbing System

Service Center color-coded labels, pressurized city water hookup/tank diverter valve, drainage valves, exterior wash station w/lighted pump switch

10' sewer hose

TrueLevel™ holding tank monitoring system

6-gal. 110-volt/LP water heater w/Energy Management System (NA 24G)

Tankless water heater (24G)

Permanent-mount LP Tank w/remote fill w/power switches

Winterization Package water heater bypass valve and siphon tube

On-demand water pump

Lockable water tank fill

Sewage pump macerator (NA 24J)

Holding tank flushing system

OPTIONAL EQUIPMENT

Heated drainage system

Tankless water heater (24J, 24V)

Safety

LP, smoke, and carbon monoxide detectors

10 BC fire extinguisher

Ground fault interrupter

Child seat tether anchor (NA 24V)

High-mount brake lamps

Daytime running lamps

Warranty⁶

12-month/15,000-mile basic limited warranty⁷

36-month/36,000-mile limited warranty on structure⁷

10-year limited parts-and-labor warranty on roof skin⁷

FOOTNOTES

1. The height of each model is measured to the top of the tallest standard feature and is based on the curb weight of a typically equipped unit. The actual height of your vehicle may vary by several inches depending on chassis or equipment variations. Please check with your dealer for further information.
2. Floorplans feature a wide-body design - over 96". In making your purchase decision, you should be aware that some states restrict access on some or all state roads to 96" in body width. Before making your purchase decision, you should confirm the road usage laws in the states of interest to you.
3. The load capacity of your motorhome is designated by weight, not by volume, so you cannot necessarily use all available space when loading your motorhome.
4. Capacities are based on measurements prior to tank installation. Slight capacity variations can result due to installation applications.
5. Capacities shown are tank manufacturer's listed water capacity (W.C.). Actual filled LP capacity is 80% of listing due to overfilling prevention device on tank.
6. Actual towing capacity is dependent on your particular loading and towing circumstances which includes the GVWR, GAWR, and GCWR as well as adequate trailer brakes. Please refer to the Operator's Manual of your vehicle for further towing information.
7. See separate chassis warranty.
8. See your dealer for complete warranty information.

NA Not Available

Not all items available in combination. See dealer for details.

Winnebago's® continuing program of product improvement makes specifications, equipment, model availability, and prices subject to change without notice. Published content reflects the most current product information at time of printing. Please consult your dealer for individual vehicle features and specifications.





Let us host
your next

Adventure



WGOAdventures.com



WINNEBAGO™

RV INSURANCE



From RV to personal insurance, Winnebago RV Insurance can provide all the coverage and services you need to feel at home on the road.

For more information:
(800) 642-4892

Connect with Winnebago (Click one of the following)



Like us



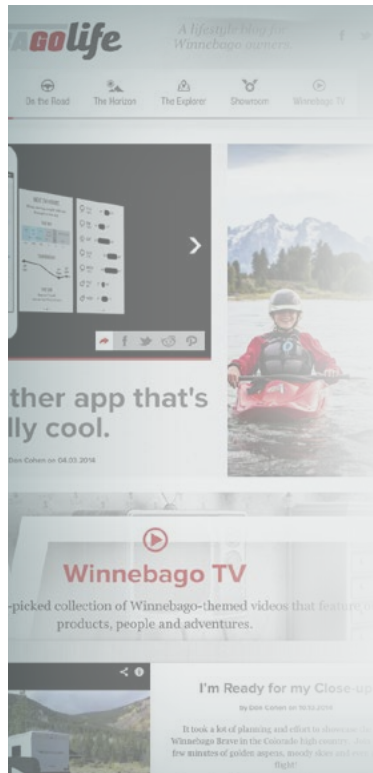
Follow us



Watch us

WinnebagoInd.com Has All The Answers

Visit WinnebagoInd.com on your computer, smartphone, or tablet for the latest product information and updates.



Welcome to GoLife!

Visit our lifestyle blog for motorhome news, personal travelogues, and community stories.

WinnebagoLife.com

GoLife

PREFERRED CARE PROGRAM

We back our motorhomes with best-in-class support both before and after the sale:

- 12-month/15,000-mile basic limited warranty
- 36-month/36,000-mile limited warranty on structure
- 10-year limited parts-and-labor warranty on fiberglass roof
- Complimentary 24-hour roadside assistance program
- TripSaver® Fast Track Parts guarantees that in-stock warranty parts ship directly to your dealer within 24 hours
- National dealer service network



For more information:
WGOService.com



WIT CLUB

Join the Club, Join the Fun

Here's the perfect way to begin your life on the road as the owner of a new Winnebago – by joining the exclusive WIT Club. Start your adventure with other fun-loving WIT Club members from across the country and get the most out of your new Winnebago motorhome.



Members enjoy:

- Caravans and rallies
- Newsletters
- Local and state group activities
- RV travel benefits

See more at
WITClub.com



Grand National Rally

Each year, thousands of Winnebago owners descend upon Forest City, Iowa. Rally-goers enjoy an unforgettable week reconnecting with friends, taking tours, participating in activities, and more. Join the adventure next July!

WINNEBAGO^{IND}

CONTACT US

GENERAL INQUIRIES

Corporate Switchboard
(641) 585-3535

CURRENT PRODUCT OWNER AND SERVICE-RELATED INQUIRIES

(800) 537-1885
or winnebagoind.com

NEW VEHICLE SALES INQUIRIES

sales@winnebagoind.com

FAX

(641) 585-6966

POSTAL ADDRESS

Winnebago Industries, Inc.
P.O. Box 152
Forest City, IA 50436

STREET ADDRESS

Winnebago Industries, Inc.
605 West Crystal Lake Road
Forest City, IA 50436