



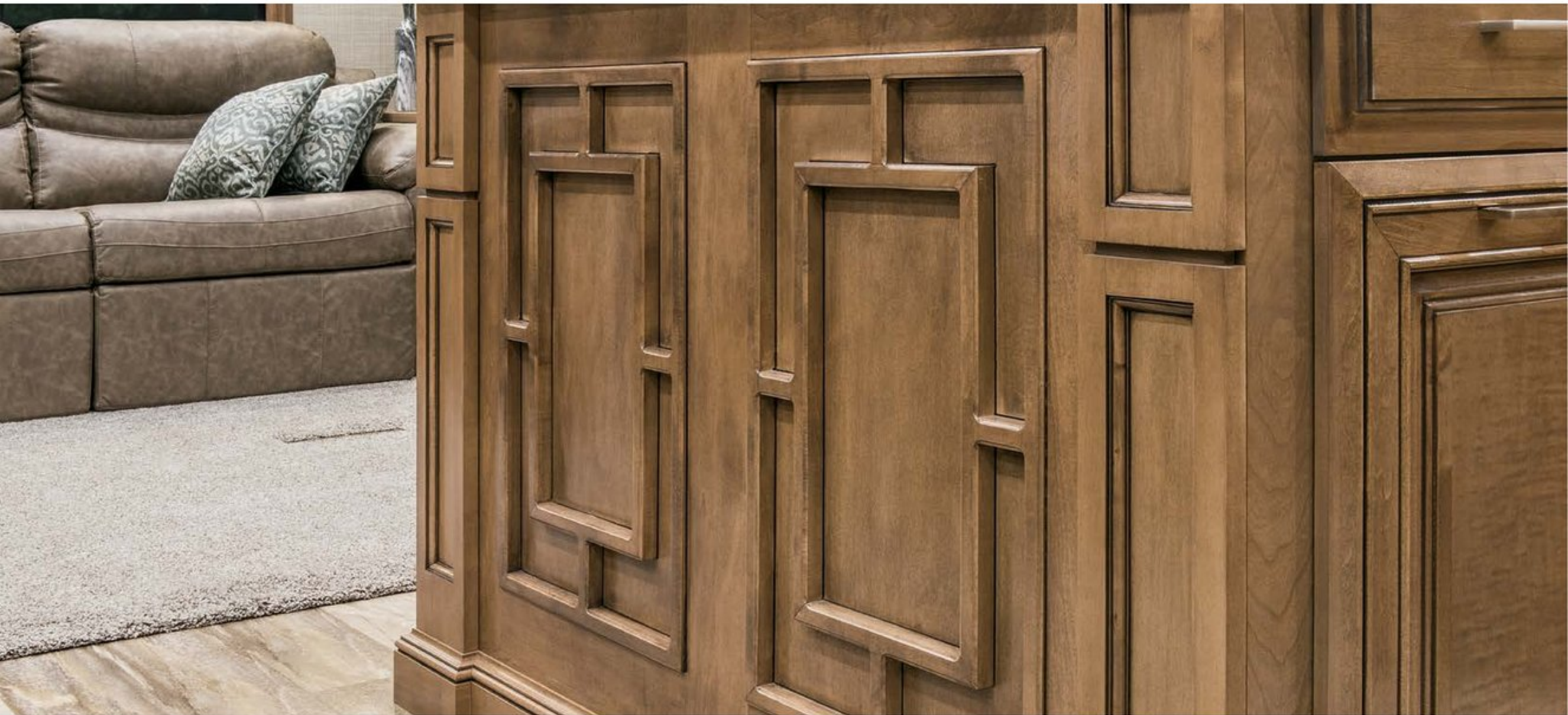
MOBILE SUITES

ELITE SUITES

2018 LUXURY FIFTH WHEELS

Begin your journey with the one that started it all... the DRV Mobile Suites.

The Mobile Suites is the foundation that DRV is built upon. It offers all the comforts of home, all the conveniences of a residential kitchen and the peace of mind that comes from knowing you've chosen the best construction available on the market today.





40 KSSB4 | Hazelnut with Regency Décor and Café Furniture





40 KSSB4 You expect the ultimate in form, function, and design. By listening to our customers support and feedback we have taken our Mobile Suites to a new level.





40 KSSB4

The master suite in a Mobile Suite comes standard with a king sized bed and a night stand on each side. The 40 KSSB4 features a grand staircase which leads to the master bedroom, bathroom, and large washer/dryer closet. This allows the front wardrobe to be used to store all of your clothes for every season.





38 RSSA | Hazelnut with Mica Décor and Linen Furniture





38 RSSA

Engineered for dependability and lasting beauty, your Mobile Suite will be every bit as sophisticated as you are. Each floor plan features a gourmet kitchen that includes ample storage, a 20 cubic foot residential refrigerator, stainless steel dishwasher, convection microwave, soft-close drawer guides, hand laid luxury vinyl plank flooring, and a custom glass tile backsplash on solid surface countertops.





38 RSSA

This attractive bedroom features accommodations for separate washer and dryer hook-up, along with a king sized bed with generous storage underneath. The walk-in closet with aromatic cedar lining is enclosed with custom hardwood sliding doors that push back for full access to the wardrobe. In addition, our exceptional vanity slide significantly widens the walking area in front of the bed while not compromising on storage.



Auburn Mirage
Full Body Paint (Option)



Crimson Dusk
Partial Body Paint (Standard)



Copperbay
Full Body Paint (Option)



Venetian Sunset
Partial Body Paint (Standard)

2018
MOBILE SUITES



Gettysburg



Sofa Pillows

Dinette Chairs



Café Sofas



Hazelnut



Mocha Cherry



Mica



Sofa Pillows

Dinette Chairs



Cocoa Sofas



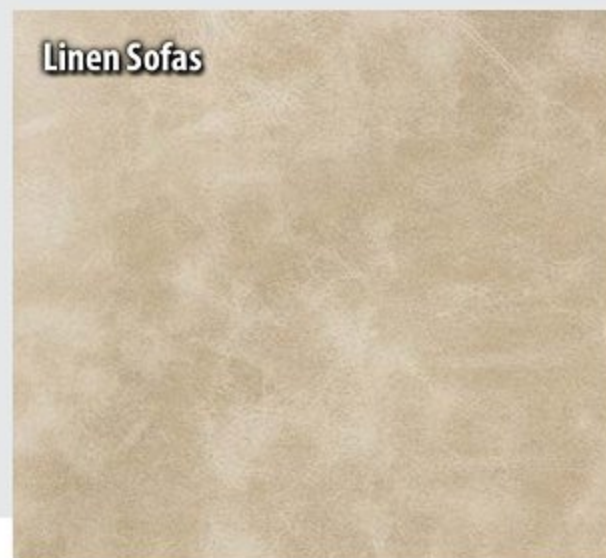
High Polished Vernazza Countertops



Regency



Sofa Pillows & Dinette Chairs



Linen Sofas



**Vinyl 6" x 36"
Floor Tiles**



Shaw® Carpet

Stand tall in the Elite Suites – our moving masterpiece.

Absolutely no detail has been overlooked, from professionally stained hardwood cabinetry with high polished quartz countertops to hand-laid custom flooring. This residential combination separates the Elite Suites to a class by itself.





Each Elite Suites Gourmet Kitchen is built around a standard stainless steel residential appliance package like the Mobile Suites, but we have upgraded the package to include a state of the art induction cooktop. Elegant hand-laid porcelain backsplashes, quartz countertops, and a custom over-the-island light feature complete the Elite Suites Gourmet Kitchen package.

We offer our Elite customers the choice between multiple luxury quartz countertops, flooring, and full body paint schemes to allow them the opportunity to build their Elite Suites just the way they want it.



Westport Harbor
Full Body Paint
w/Window Silks



Cinder Ridge
Full Body Paint w/Window Silks



Desert Dream
Full Body Paint w/Window Silks

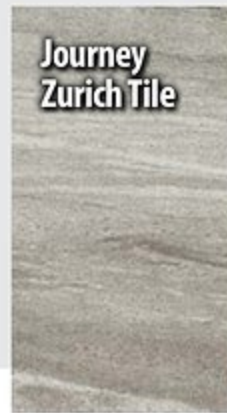


Superior Sunrise
Full Body Paint w/Window Silks



Western Gem
Full Body Paint w/Window Silks

2018
ELITE SUITES



FEATURES AND BENEFITS

From the ground up, all units are built with automotive style components. Our innovative designs make it easier to transport, set up and maintain your unit.

STRUCTURE

Professionally designed and tested 15" triple steel box tube chassis. Super strong foundation to build a lasting, high quality fifth wheel.

All-weather heavy duty aluminum floor system. The floor is screwed and bolted together and will not rot over time. Also, we do not use staples which eventually work up through the floor covering.

R-29 insulated frame floor system with three weather barriers. Warm floors for extended or full time use: and keeps out condensation.

TECHNOLOGY

New state of the art Level-Up™ leveling system and industrial hydraulic system. Level your coach with a push of a button.

New automotive style Kodiak® disc brakes. Limited lifetime warranty; smoother stopping; shorter stopping distance; low maintenance cost.

Heavy duty Goodyear® H-rated 17.5" tires and aluminum eight bolt wheels. Heavier load capacity. Special tread pattern to dissipate heat. Tires are regroovable for miles and miles of safe use. Wheels are light weight and will not rust.

SeeLevel tank monitoring system. Uses sonar to provide instant and accurate readings of all tanks.

STURDY

Screwed and glued construction. Solid; 16" o.c. stud spacing.

3.25" aluminum framed walls with R-16 insulated rating. Exclusive foam core vapor barrier. Lightweight; lower heating and cooling cost; noise reduction; eliminates chance of condensation.

Radiused aluminum roof rafters on 16" centers. More space; more insulation; improved water run off; maximum load capacity per square foot.

R-25 insulated roof system with plywood and rubber or fiberglass covering. Improved weather barrier; sound deadening; low maintenance; lower heating and cooling costs.

Soft touch interior ceiling. Sound proofing; easy to clean; extra insulation.

REFINED

Conveniently located wall switches control all lighting. Fingertip control of all task and decorative lighting.

Overhead LED room lighting on dimmer switches. Personal light control.

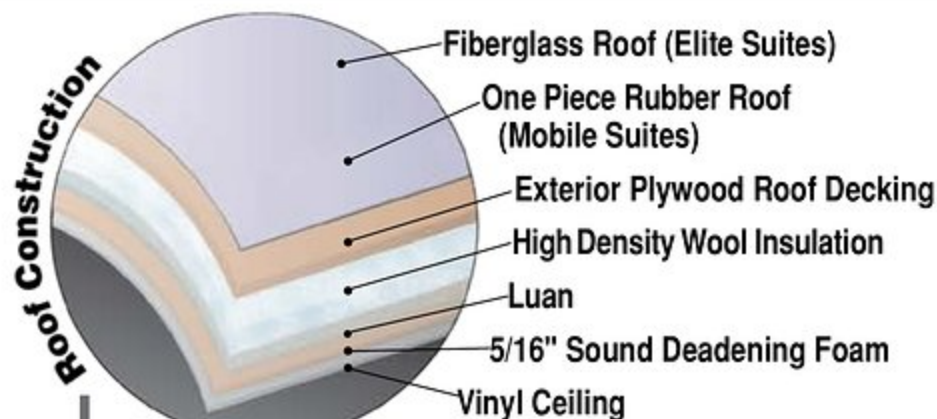
Designer raised panel cabinet doors and soft close drawers. Optimal storage; residential look; residential function.

RELIABILITY

- High pressure hydraulic lines with metal fittings
- Individual push button slide room controls
- Industrial stabilizer jacks located and wind tested to provide maximum stability
- Heavy gauge UL copper wiring
- Residential copper water manifold
- Convenient lights at all exterior service locations
- Reliable LED lights
- Gel coat fiberglass walls and exterior doors
- Plywood roof decking
- Extra sound proofing in floor, walls and roof
- Ultra quiet ducted lo-pro A/Cs
- Automotive disc brakes
- Furnace return air replaceable filter
- Over size basement storage doors with gas lift cylinders
- Custom painted exterior graphics
- Tough skin special coated rock guard.

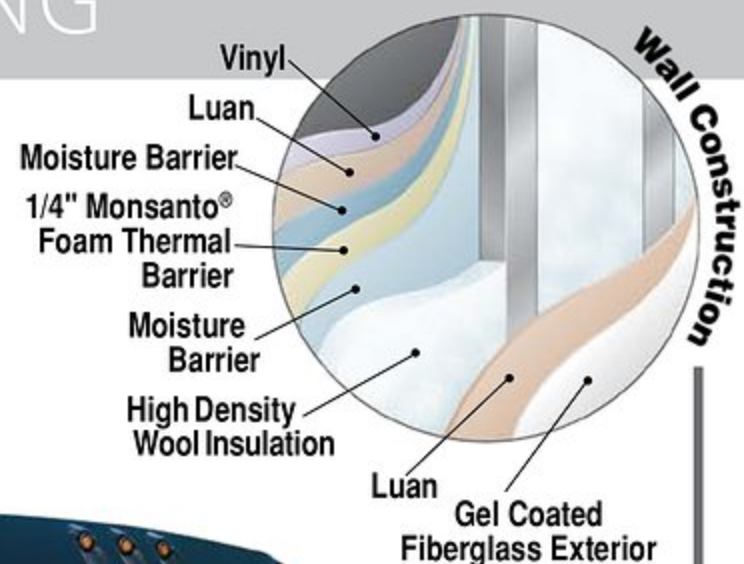
NOTE: Some features shown are exclusive to specific makes and models. Please review the complete Standards and Options list for availability.

CONSTRUCTED FOR FULL TIME LIVING



Residential Roof R25

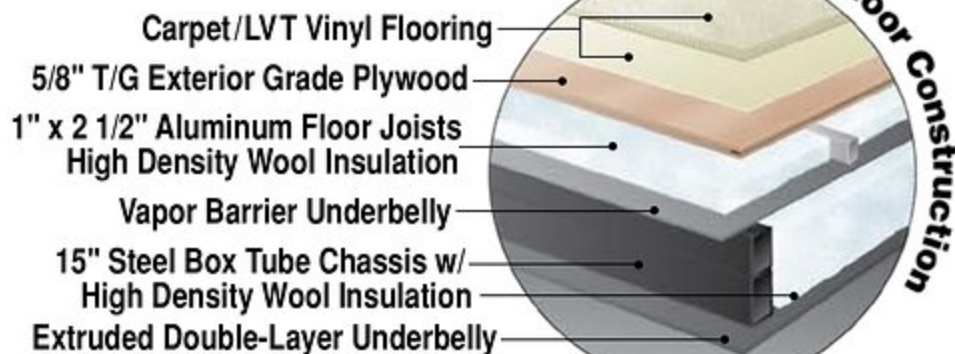
- Vinyl
- Luan
- Moisture Barrier
- 1/4" Monsanto® Foam Thermal Barrier
- Moisture Barrier
- Aluminum Roof Rafters 16" O.C.
- 1" x 2 1/2" Aluminum Studs



Residential Sidewall R16



- Hydraulic Stabilizer Jacks
- Slideout Hydraulics w/Individual Electronic Control
- Wider Tread
- High Density Wool Insulation
- Luan
- Gel Coated Fiberglass Exterior
- EcoBatt High Density Wool Insulation is derived from renewable materials.



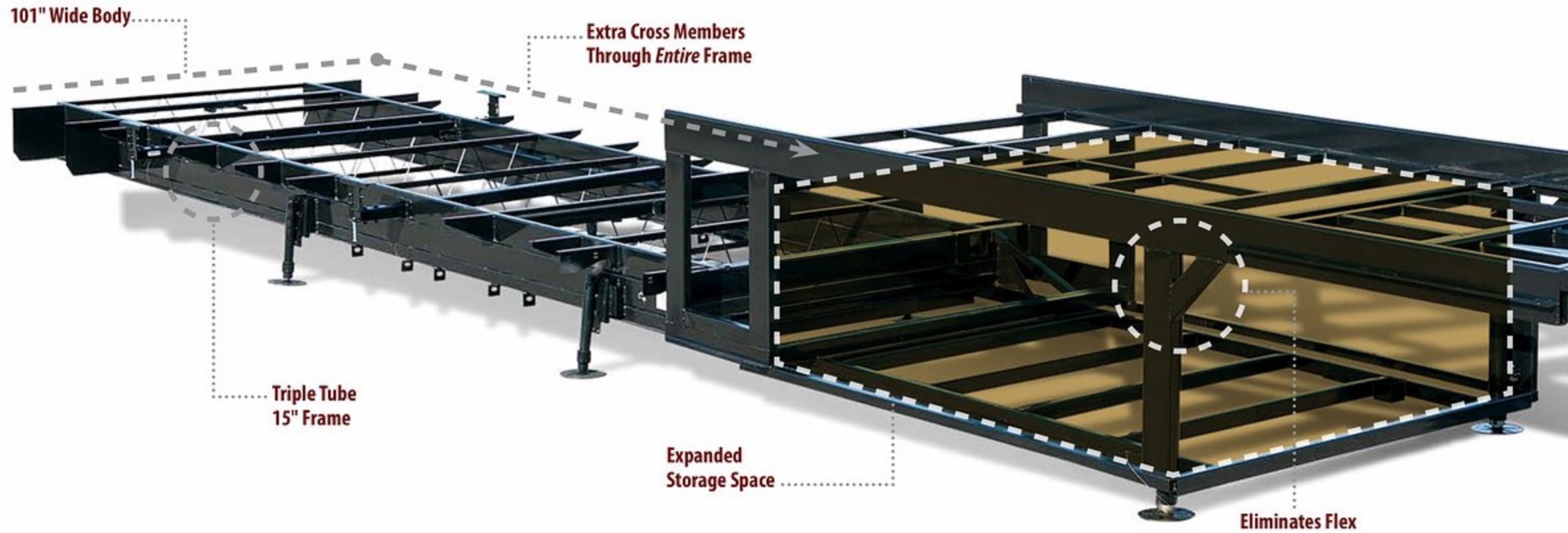
Residential Floor R29

Hydraulic Jacks



All Season Thermal Pack with High Density Wool Insulation – Standard on all Suites

DRV ADVANTAGES



Stacked triple-tube steel frame for 15" of maximum strength; the largest foundation on any fifth wheel in the industry.



Pinless hydraulic jacks are mounted at a 5-degree angle for maximum stability.



Commercial hydraulic rack & pinion slide-outs. All gear boxes are located inside the frame for the ultimate weather protection.



Heavy-duty 17.5" Goodyear® tires provide increased load capacity while staying cool on long hauls. We use truck tires, not RV tires, to ensure better performance and peace of mind.



Commercial E-Z Lube® hubs surrounded by 8 large 5/8" stud bolts and standard automotive disc brakes round out the safety features of every DRV unit.



Box Steel Solid

The foundation is the most important part of your home. It needs to be strong, reliable, and able to last the tests of time. DRV's custom-engineered 15" triple box tube frame measures 101" wide – the largest, most rigid fifth wheel frame in the industry. This design eliminates flex around the pin box, and allows us to frame even the upper deck with steel to open up the storage compartment, providing you with space to fit all your personal belongings.

The DRV 6-Jack Level-Up System

Designed by DRV, our 6-jack level-up system provides quick and easy leveling and the strength to stabilize the coach when set up.



Residentially-hung sidewalls are carriage-bolted into the floor for solid construction and superior strength.



Our 3 1/4" walls are the thickest in the industry, giving you maximum insulation from noise and weather. The exclusive foam core vapor barrier eliminates condensation.



Formaldehyde Free! High-density wool **R-16** residential insulation completely surrounds all of our walls and slides. Best insulation in the industry *and eco-friendly!*



A copper water manifold comes standard, ensuring equal water pressure throughout your home. And each water line is clearly labeled and has its own shut-off valve, allowing you to isolate a single line without shutting off water to the rest of your home.



MORryde® I.S. Suspension eliminates the axle and leaf springs, allowing each tire to work independently. With 5 1/2" of travel per assembly, MORryde® I.S. will absorb road shock and protect your home for its lifetime.

FLOOR PLANS



36 RSSB3 - Mobile & Elite Suites
Length 37' 2" | Est. Dry 15,800 (MS) 16,200 (ES)



38 RSSB3 - Mobile & Elite Suites
Length 38' 4" | Est. Dry 16,300 (MS) 17,100 (ES)



38 KSSB - Mobile & Elite Suites
Length 40' 6" | Est. Dry 17,000 (MS) 17,800 (ES)



39 DBRS3 - Mobile & Elite Suites
Length 40' 10" | Est. Dry 16,800 (MS) 17,800 (ES)



38 RSB3 - Mobile & Elite Suites
Length 39' | Est. Dry 16,600 (MS) 17,200 (ES)



39 RESB3 - Mobile & Elite Suites
Length 38' 10" | Est. Dry 17,300 (MS) 17,800 (ES)



38 RSSA - Mobile & Elite Suites
Length 39' 1" | Est. Dry 16,300 (MS) 17,100 (ES)



40 KSSB4 - Mobile & Elite Suites
Length 40' 10" | Est. Dry 17,100 (MS) 18,300 (ES)

All Models Feature:

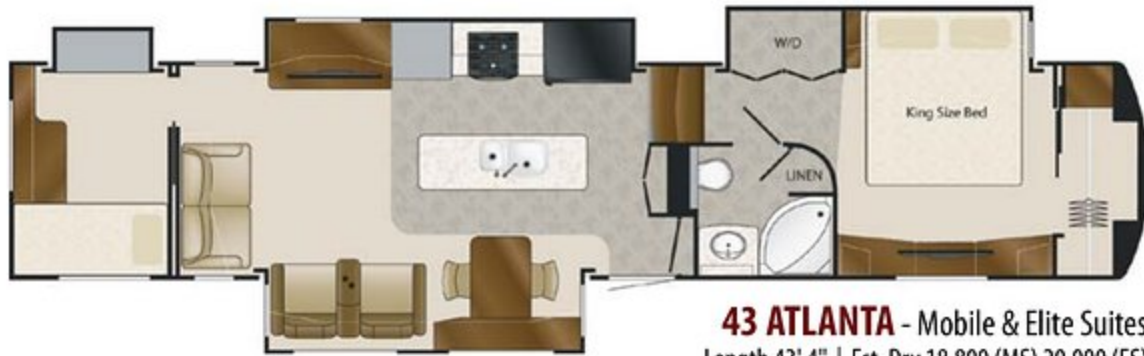
- Fresh Tank - 100 gal.
- Gray Tank - 75 gal.
- Black Tank - 50 gal.

- SeeLevel Tank Monitor
- Hot Water Heater - 12 gal.

- Goodyear 17 1/2" H-Rated Tires
- Automotive Disc Brakes

MS = Mobile Suites | ES = Elite Suites

Note: All lengths are measured from the pin box to the rear cap. All dry weights are estimates depending on options. For GVWR please visit our website.



43 ATLANTA - Mobile & Elite Suites
Length 43' 4" | Est. Dry 18,800 (MS) 20,000 (ES)



44 HOUSTON - Mobile & Elite Suites
Length 44' 2" | Est. Dry 19,700 (MS) 20,700 (ES)



43 DALLAS - Mobile & Elite Suites
Length 43' 4" | Est. Dry 19,200 (MS) 20,000 (ES)



44 MEMPHIS - Mobile & Elite Suites
Length 44' 2" | Est. Dry 19,800 (MS) 20,600 (ES)



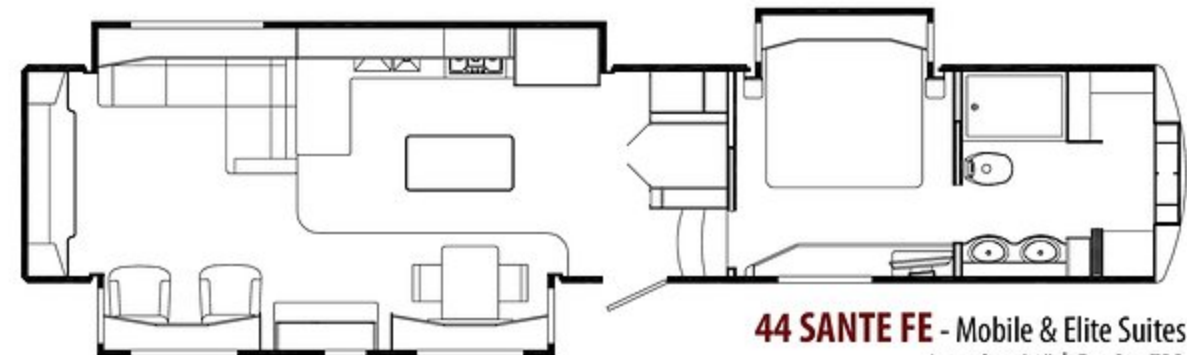
43 MANHATTAN - Mobile & Elite Suites
Length 43' 4" | Est. Dry 19,500 (MS) 19,900 (ES)



44 NASHVILLE - Mobile & Elite Suites
Length 44' 2" | Est. Dry 19,800 (MS) 20,600 (ES)



44 CUMBERLAND - Mobile & Elite Suites
Length 44' 2" | Est. Dry TBD



44 SANTE FE - Mobile & Elite Suites
Length 44' 2" | Est. Dry TBD

STANDARDS

Frame/Running Gear:

- Goodyear® 17 1/2" H-Rated Re-Groovable Tires
- Heavy Duty Grease Bolt Shackles with Bronze Bushing (MS)
- **Kodiak® Automotive Disc Brakes**
- MORryde® I.S. Suspension and Heavy Duty Pin Box (ES)
- Heavy Duty Axles
- Commercial Grade E-Z Lube® Hubs
- **15" Triple Stacked Box Tube Frame**
- 101" Wide Body
- Industrial Hydraulic System for Jacks and Lower Level Slides
- Electric Bedroom Slide
- **Slide Outs with Select Push Button Controls**
- Pinless Hydraulic Front Landing Jacks at 5 Degree Outboard Angle

Construction: Floor

- 3" Thick Floor
- **14" O.C. Floor Aluminum Floor Joists**
- Screwed and Glued Joist Construction
- 5/8" Tongue and Groove Plywood Flooring
- **Four Season Perimeter Heat Ducting in Floor**
- Residential Rated **R29** Formaldehyde Free Wool Insulation

Construction: Walls/Slides

- **3 1/4" Thick Walls/Slides**
- 16" O.C. Stud Spacing
- Screwed and Glued Aluminum Stud Construction
- **1/4" Monsanto® Fome-Cor Vapor Barrier (Eliminates Condensation)**
- 1/4" Thick Gelcoat Fiberglass with Wood Backer
- Residential Rated **R16** Formaldehyde Free Wool Insulation

Construction: Roof

- 16" O.C. Rafter Spacing
- Residential Rated **R25** Formaldehyde Free Wool Insulation
- **Plywood Roof Overlayment**
- Seamless, 1-Piece Rubber Roof (MS)
- Fully Molded 1-Piece Fiberglass Roof (ES)
- **Soft-Touch Vinyl Ceiling, Including Interior Slide-Out Ceilings**

Exterior:

- **Straight Roof Line with 8' Tall Interior Slide Out Height**
- High Density Wool Insulation
- Custom Painted Exterior with Clear Coat (MS)
- Gelcoat Fiberglass Molded Caps
- Gelcoat Fiberglass Molded Fender Skirts (ES)
- Full Body Painted Exterior with Custom Window Silks (ES)
- Frameless Tinted Safety Glass Windows
- Four Exterior Security Lights
- Commercial LED Exterior Clearance Lights
- Red LED Turn Signal
- LED Docking Lights
- 78" Entry Door
- **Removable Storm Door Panels**
- Keyless Entry Door (ES)
- **Metal Slam Door Compartment Latches**
- Extra Thick Compartment Doors with Gas Struts
- Easy Access Light Switches for Basement
- Washable Storage Compartment Liner
- Custom Enlarged Control Center with LED Lighting
- Lend-a-Hand Exterior Grab Handle
- Power Awning with LED Lights and Aluminum Weather Shield
- Water Pump Switch at Outside Hookup Center

Systems/Tanks:

- 50 Amp Service with Detachable Cord
- 80 Amp 12 VDC Converter
- 100 Gal. Fresh Water Tank
- 75 Gal. Grey Water Tank with Power Flush
- 50 Gal. Black Water Tank with Power Flush
- **SeeLevel Tank Monitoring System on All Tanks**
- Residential Type 1/2" Water Lines
- **Exclusive Copper Water Manifold with Individual Shut-Off Valves**
- Whole House Water Filtration System
- Anderson Multi-Switch Water Bypass System
- Slide Out Propane Tray with Dual 40 Lb. Tanks

- 12 VDC Battery on Pull Out Tray
- 12 Gal. Gas/Electric DSI Water Heater
- 40,000 BTU Furnace with Custom Plenum
- **Residential 5 Duct Heating System with 6" Ducting**
- **Forced Heat Ducting to Tanks/Water System**
- **Fully Ducted A/C System with Cold Air Return**
- 15,000 BTU Low-Profile Main A/C
- Wired and Ducted Bedroom A/C with Cold Air Return
- Triple 15,000 BTU Low-Profile A/Cs (All 43/44' Models)
- **Solar Prep**
- HD Roof Satellite Prep for Dual DVR Receivers
- HD Ground Satellite and Cable Prep
- Power HD TV Antenna

Interior: Luxury Living Room/Dinette

- Hand Laid Vinyl Plank Tile (MS)
- Hand Laid 12 x 24 Vinyl Floor Tile (ES)
- Hand Laid Vinyl Wood Plank Flooring (ES)
- Residential Rebond Carpet Pad
- Plush Residential High Durability Carpet
- Hazelnut/Mocha Cherry Hardwood Solid Cabinetry
- Solid Hardwood Fascia Trim Around Slide Outs (MS)
- Solid Hardwood Fascia Trim Around Slide Outs with LED Lights (ES)
- Solid Hardwood Cabinet Stiles (Pocket Drilled/Screwed)
- Concealed Cabinet Door Hinges
- Raised Panel Mitered Cabinetry (MS)
- **Soft-Close Full Extension Metal Drawer Guides**
- **LED Interior Ceiling Lighting on Dimmer Switches**
- Decorative Wall Clock (MS) (Most Models)
- Personalized Hardwood Wall Clock (ES) (Most Models)
- Utility Closet with Coat Storage and Centralized Control Station
- Interior Ceiling Fan
- Decorative 12V Light Sconces (MS)
- Decorative 110V Light Sconces (ES)
- Custom Hardwood Dinette Buffet with Solid Surface Top (MS)
- Custom Hardwood Dinette Buffet with Quartz Top (ES)
- **Dinette Table with Hidden Leaf Extension**

- (2) Hardwood Dinette Chairs with Fabric Accent
- Crown Molding Throughout
- HD Wiring Throughout
- **MCD Power Night Shades with Master Switch (ES)**
- Dyson® Hand Held Vacuum (ES)
- Residential Sofa with Hide-a-Bed
- Residential Theatre Seating with Center Console (Side Entertainment Models)
- Residential Recliners (Rear Entertainment Models)

Interior: Gourmet Kitchen

- **20 Cu. Ft. Residential Stainless Steel French Door Refrigerator**
- **Stainless Steel Convection/Microwave**
- **Stainless Steel Residential Dishwasher**
- **Pull-Out 13 Gal. Garbage Can**
- Deep Double Bowl Stainless Steel Sink with Sink Covers
- Residential Kitchen Faucet with Separate Sprayer
- **Custom Hand Laid Glass Backsplash (MS)**
- **Custom Hand Laid Porcelain Tile Backsplash (ES)**
- High Polished Solid Surface Countertops (MS)
- Residential Quartz Countertops (ES)
- LED Lighted Avonite® Edging Around Island (MS)
- Sealed 3 Burner Cooktop with Hinged Countertop Lift (MS)
- Electric 2 Burner Induction Cooktop (ES)
- Custom Appliance Garage with Pull-Out Tray (Most Models)
- Custom Over the Island Wood/Glass Accent Light
- Lighted Pantries and Kitchen/Bathroom Toe Kicks

Interior: Master Bath/Hallway

- Hardwood Steps
- Hand Laid Vinyl Plank in Hallway/Bathroom (MS)
- No Carpet in Hallway
- Washer/Dryer Prep
- Heat and A/C Ducting in Bathroom
- Maxxair® Fan in Bathroom (Exhaust Only)
- 1-Piece Fiberglass Shower with Molded Seat
- 48" 1-Piece Fiberglass Shower with Molded Seat (Some Models)
- Granite Colored Fiberglass Shower (ES)

OPTIONS

- Sky-Light Over Shower with LED Pot Light
- Porcelain Toilet with Water Saver Spray (MS)
- Macerator Toilet (Some Models) (MS)
- Macerator Toilet (ES)

Interior: Master Bedroom

- **Custom Walk-in Front Closet with Built in Dresser (Most Models)**
- **Real Cedar Lined Front Closet**
- **Custom Hardwood Wardrobe Doors**
- King Bed Suite 72" x 80" with Innerspring Mattress (MS)
- Sleep Number® Bed by Select Comfort (ES)
- Full Storage Under Bed Base
- Separate Bedroom Ceiling Speakers
- Over the Bed Reading Lights on Separate Switches
- **MCD Power Night Shades with Master Switch (ES)**

Full Timer's Package (Forced Option):

- 55" LED Smart HDTV and Home Theatre Package
- 32" LED Bedroom TV Package
- 15 BTU Ducted Lo/Pro Bedroom A/C
- Whole House Central Vacuum (MS)
- Goodyear® 17 1/2" H-Rated Spare Tire and Carrier
- 2" Receiver Boat Hitch with 7-Way Plug
- Manual 4-Step Entry
- Detachable Ladder Only
- Frameless Thermopane Windows

Traveler's Package (Forced Option):

- MCD Day/Night Roller Shades (MS)
- Built-In Fireplace
- 1000W Inverter with Dual 6V Batteries
- Maxxair® Fan with Rain Sensor - Bathroom
- Maxxair® Fan with Rain Sensor - Kitchen
- Power Management System
- Six Point Hydraulic Leveling System
- One Touch Auto Leveling
- MORryde® I.S. Suspension with MORryde® Pin Box (MS)
- Keyless Entry Door (MS)

Cabinetry (Standards):

- Hazelnut
- Mocha Cherry

Décor (Standards):

- Gettysburg
- Mica
- Regency

Flooring (Standards):

- Hand Laid Vinyl Wood Plank Flooring (ES)
- High Ounce Carpet
- Hand Laid Vinyl 6" x 36" Floor Tiles (MS)
- Hand Laid Vinyl 12" x 24" Floor Tiles (ES)

Countertops (Standards):

- High Polished Vernazza (MS)
- Aria Quartz (ES)
- Mirama Bronze Quartz (ES)

Entertainment:

- 60" LED Smart HDTV (Rear Entertainment Models Only)
- 32" LED HDTV Outdoor Entertainment
- Winegard® Trav'ler HD Auto Satellite
- WiFi Ranger Wireless Router

Kitchen:

- 3 Burner Range/Oven IPO 3 Burner Cooktop (MS)

Bedroom:

- Built in Front Wardrobe Safe with Keyless Entry (MS)
- Queen Bed Suite
- Hazelnut Folding Chair
- Mocha Cherry Folding Chair
- Sleep Number® Bed by Select Comfort (Standard ES)

Systems/Vents/Fans:

- 15 BTU Ducted Lo/Pro AC – Bedroom
- Heat Pump
- Maxxair® with Switch Control – Bedroom
- Splendide® Front Load 2 piece
- Splendide® XC 2,100 Combo
- Generator Prep
- Onan® 5,500 Marquis Gold Generator with Prep
- 2,800 Watt Inverter with Four 6V Batteries
- Surge Protector with Voltage Protection and Remote Display
- Heat Pads on All Tanks with Elbow Heater on Drain Pipe
- Truma Continuous Hot Water Heater (ES)

Construction/Running Gear:

- **Power 4-Step Entry (Exclusive)**
- Power Cord Reel
- **HBA Brake Cam (To be Ordered Special for Customers with GM Trucks)**
- MORryde® Step Above

Exterior/Awnings:

- Slide Toppers
- Power Dinette Slide Patio Awning with Weathershield
- Slide Out Storage Tray (36" x 90")
- Audible Wireless Backup Camera System
- RVIA
- CSA

Partial & Full Body Paint (Standards/Options):

- Crimson Dusk (Standard MS)
- Venetian Sunset (Standard MS)
- Auburn Mirage (Option MS)
- Copperbay (Option MS)
- Cinder Ridge (Standard ES)
- Desert Dream (Standard ES)
- Superior Sunrise (Standard ES)
- Western Gem (Standard ES)
- Westport Harbor (Standard ES)



Your suite awaits you...

DRV

0160 W 750 N • PO Box 235 • Howe, IN 46746

Factory tours by appointment, please call for specifics 260-562-1075

www.drvsuites.com

facebook

twitter



www.suitesowners.com

Be sure to join our outstanding DRV owner's club!

This brochure is based upon the latest product information available at the time of printing. DRV reserves the right to make changes at any time to prices, colors, materials, equipment, specifications and models, and to discontinue models without notice or obligation. Color representations are as close as photographic/print reproduction will allow. All specifications are approximate and dimensions nominal. Text and/or photos may represent equipment or décor items which may not be included as a standard item in your model of choice.

© 2018 DRV . 7/26/18