

05 Meridian™

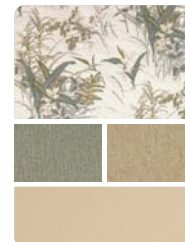




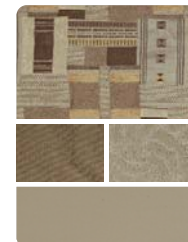
39K *Beachgrass Blue with Sierra Maple*

05 Meridian | The year of the diesel.

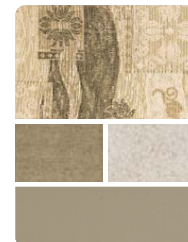
No other motor home makes it more enticing to move into a diesel pusher than an Itasca Meridian. With the power of a 350 HP Caterpillar® (300 HP Cummins® on 32T) diesel engine and a 10,000-lb. towing capacity, you'll feel the difference a diesel can make right away. If it's flexibility you want, the Meridian offers a variety of floorplans, including two with triple slides, and a host of amenities that provide the luxurious diesel pusher experience without breaking the bank. You'll also benefit from our innovative SmartSpace™ design philosophy that emphasizes user friendly amenities that make the most of the interior spaces.



Beachgrass Blue



Silver Sage



Deep Linen

◀ You'll feel right at home in your Meridian because you can select the residential features that best suit your needs, like the BenchMark™ full comfort dinette, classic dining table or multi-function dining table. Other key features include ceiling-ducted TrueAir® residential central air conditioning, a flat-face TV and an available Sleep Number® bed. Dual-glazed, flush-mounted, thermo-insulated windows improve thermal efficiency while the day/night pleated shades offer multiple levels of privacy.



Cooking is a joy in this full-featured galley, highlighted by the dynamic look of stainless steel appliances. Meal preparation has never been easier, thanks to the sensor cook feature on the 30" microwave. Solid-surface countertops and sink covers create a workspace large enough for even the most extravagant meals. The faucet comes with a pullout sprayer for quick and easy cleanups. You'll have plenty of food storage space in the pullout pantry and the two-door or available four-door refrigerator/freezer.

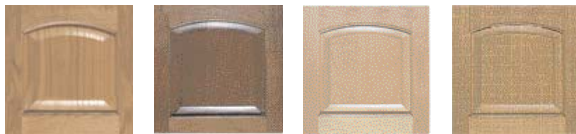


You'll sleep well in the Meridian, thanks to a walk-around queen-size bed with Serta® mattress. A standard slideout allows plenty of room for storage, including a large mirrored wardrobe and an underbed compartment on most models. Mounted high in the corner for optimal viewing is a 20" flat-face TV. The 32T comes with a 20" LCD TV for extra clarity. The front entertainment center components are wired to be viewed on the bedroom TV and, for added convenience, a special sensor lets you control them with your bedroom remote. An innovative three-way latch holds the sliding bedroom door securely in place whether it is open or closed.

Upgrade the bedroom to include a Sleep Number bed by Select Comfort.™ Hand-held remotes on each side of the bed let you quickly and independently adjust the mattress firmness to your ideal level of comfort and support...your Sleep Number, which is the Key to a Perfect Night's Sleep!™



A skylight lends a spacious feel to the bath area. Upscale features include a residential-height toilet, recessed sink, chrome faucet and solid-surface countertops. A Moen® Posi-Temp® valve maintains a consistent shower temperature, even if the overall water pressure fluctuates. The available shower package upgrade includes a fold-down shower seat and a hand-held showerhead. A hamper even comes standard on select models.



Portsmouth Oak Concert Cherry Washed Maple Sierra Maple



36G Silver Sage with Washed Maple



Everything in the Meridian is geared for your comfort. Select from a variety of furniture options such as the elegant banquette (34H and 36G), available in fabric or UltraLeather HP™, or the standard hoop-base lounge chair. The lounge chair on select models comes with a pullout table. We also added a number of thoughtful features like a child seat tether anchor in the dinette and additional seatbelts throughout the coach to make travel more convenient. Vinyl tile in the cab entry looks sharp and is easy to clean. A 300 watt inverter comes standard or you can upgrade with a 2,000 watt inverter/charger that powers 110-volt appliances from the house batteries.



The Meridian offers multiple dining table options. The classic dining table seats two and expands to accommodate guests (NA 32T). A multifunction table is also available which expands to seat four or can be used as a computer table or workstation (NA 32T). A round dining table is standard on the 39F. You can also enjoy an afternoon dessert at the pullout table and lounge chair in the 34H and 36G.



Quality entertainment is a must. That's why the Meridian comes loaded with a 24" Sony® flat-face TV (27" TV on 39F), amplified antenna and a video selection system. Add a DVD/VCR combo, digital satellite dish and the Deluxe Sound System with 5-channel QSURROUND™ for an entertainment center that will be the envy of the campground.



You're in command when you take the wheel behind the cockpit-style dash. We've made your driving comfort a priority with conveniently positioned, large, easy-to-operate controls, a simplified touchpad transmission and a steering wheel that tilts and telescopes to fit the driver. Long trips are even more enjoyable with an electronic compass/thermometer and available powered sunvisors.



For your listening pleasure, every Meridian comes equipped with the

RV Radio® Our engineers worked closely with the radio manufacturer to develop a system exclusively for motor home applications. Its large buttons and control knobs make it easy to control the CD player, cassette deck and AM/FM stereo radio. You'll also have one-touch access to the weather band and the added convenience of hand-held and steering wheel remotes.



Get connected to Sirius® satellite

radio programming and start listening to 100 channels of digital entertainment. High-altitude satellites deliver crystal-clear satellite programming anywhere in the U.S. with no signal fades. Includes a Sirius programming subscription with your first year of ownership (requires Kenwood Sirius satellite receiver, shown).



Itasca owners are falling in love with the convenience of two-way radios and now they're available with every Meridian. The set of four multi-channel radios recharges from the coach batteries in the built-in charging station. Nickel metal hydride batteries provide up to 15 hours of standby time and 90 minutes of talk time on a single charge.



Add the available, built-in combination washer/dryer and you'll never need a Laundromat again (NA 32T). It features multiple wash, time and temperature cycles to accommodate a wide variety of fabrics.



The BenchMark full comfort dinette is our most comfortable dinette ever. Seat cushions feature innerspring construction just like premium residential furniture and the seats flip up to reveal large storage areas below. BenchMark also readily converts into a comfortable bed. A child seat tether anchor is located in the forward facing dinette seat.



The Rest Easy multi-position lounge offers unmatched seating flexibility and comfort. At the touch of a button it goes from a sofa to a recliner with a pullout ottoman. Touch the button again and it converts into a comfortable bed. Available upgrades include UltraLeather HP upholstery and dual reclining seats.

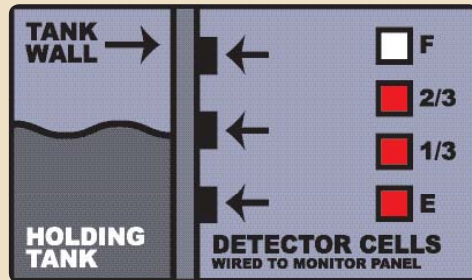


The StoreMore® slideout system is the smarter way to store your gear. Large exterior compartments are designed to accommodate bulky and odd-shaped items and feature remote control door locks for added security. Best of all, the compartments move with the slideroom for easy access without crawling on your hands and knees. Gas struts and single-paddle latches allow compartment doors to open easily.



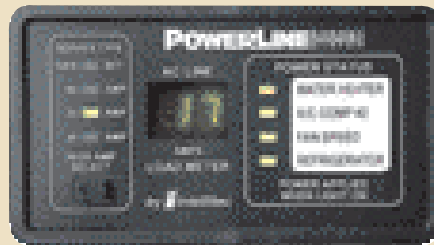
SMART STORAGE

We work hard to make owning a motor home more enjoyable with innovative features like this collapsible ladder (NA 32T). It tucks into a customized enclosure within the StoreMore slideout for quick and easy access. It's just another example of how we use Smart Storage™ to make storage space more usable.



Winnebago Industries exclusive TrueLevel™ holding tank

monitoring system incorporates Mirus™ detector cell technology to ensure accurate fresh and waste water tank level readings. Mirus detector cells produce a micro-electrical field that detects liquid levels from outside the tank. No more probes to corrode or clog. Just true, accurate readings time after time.



Keep your electrical systems running smoothly even when operating the central air conditioning on 30-amp. shoreline power. The PowerLine® energy manage-

ment system monitors electricity usage and cycles secondary appliances off during periods of heavy demand to prevent tripped circuits. Power is automatically restored to appliances and systems when demand is lowered.



Hookups are a snap. The QuickConnect™ coupling valve on the sewer hose allows for quick and easy connections to the waste dump. And with the QuickPort™ service connection hatch, you'll never have to wrestle cords and hoses through tiny holes again. Hoses easily slide into the QuickPort slots while allowing the bay door to fully close. The entire plumbing compartment is heated and includes a wash station so you can clean up sandy shoes before entering the coach.



ONEPLACE™ The OnePlace™ systems center

brings important and frequently used switches, gauges and controls into one central location. It is illuminated by an overhead courtesy light so you can check your system after dark without turning on all the lights.



Interior climate control has never been more precise, thanks to the TrueAir residential central air conditioning from Winnebago Industries®. It utilizes the superior cooling technology of a

Coleman®-Mach® cooling unit to supply optimum comfort to every part of the coach. Its basement location provides a low vehicle profile and center of gravity. Plus, it reduces interior noise and is easy to service with residential-style filters. On cool days, the heat pump provides warmth, minimizing the need to use the LP furnace.



Listen to your favorite music on the exterior entertainment center while you relax in the shade of your awning. AM/FM stereo radio with remote, CD player, two speakers, 12-volt powerpoint and a TV jack are all contained in a compartment above

the floor that doesn't impede storage. A portable satellite dish hookup is also included in the electrical service center to expand your entertainment options (satellite dish not included).



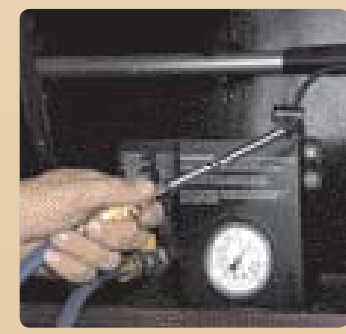
Meridian's one-piece sidewalls are amazingly tough, as are the hydraulic jacks that keep the coach level and stable when parked. For those seeking to add a touch of distinction, Meridian features our very in-demand full-body automotive paint, stylized aluminum wheels, and an available full-width Itasca mudguard. Driving is even more pleasurable with large exterior mirrors that contain both flat and convex surfaces. The driver-side mirror features a breakaway design and turn signals are incorporated into both mirrors as a courtesy to other drivers.



The innovative KeyOne™ system lets you open most exterior compartments and doors with a single key so you never have to fumble through a pocketful of keys to find the one you want.



Anti-lock air brakes give you dependable stopping power in all road conditions. The brake pedal is mounted solidly to the steel cab deck for maximum feel and control.



An auxiliary air supply connection with a detachable 50-ft. hose provides a steady source of air for tires, balls and water toys (air chuck not included).

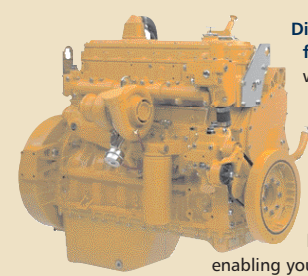


A large air spring near each rear wheel provides a cushioned ride you can't experience with smaller, multi-bag systems. The air springs release or take on air as the axle moves up and down to keep the coach level and steady over rough roads. A wide-track stance helps promote stability while protecting the air springs from road debris.

POWER TO SPARE

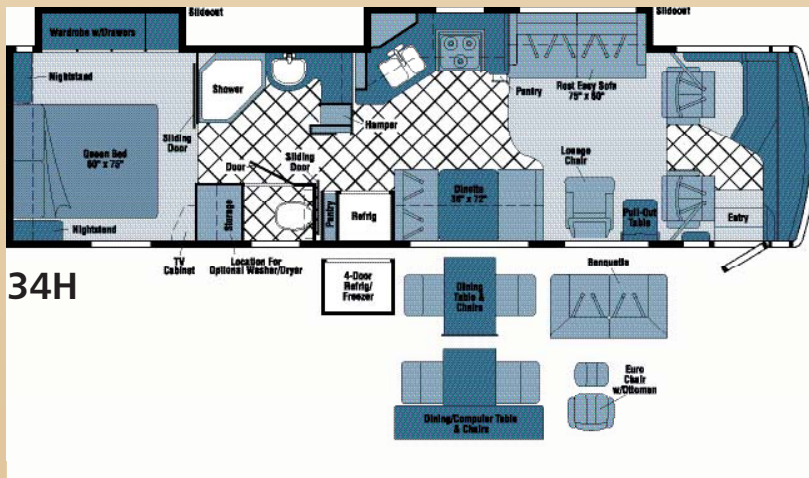
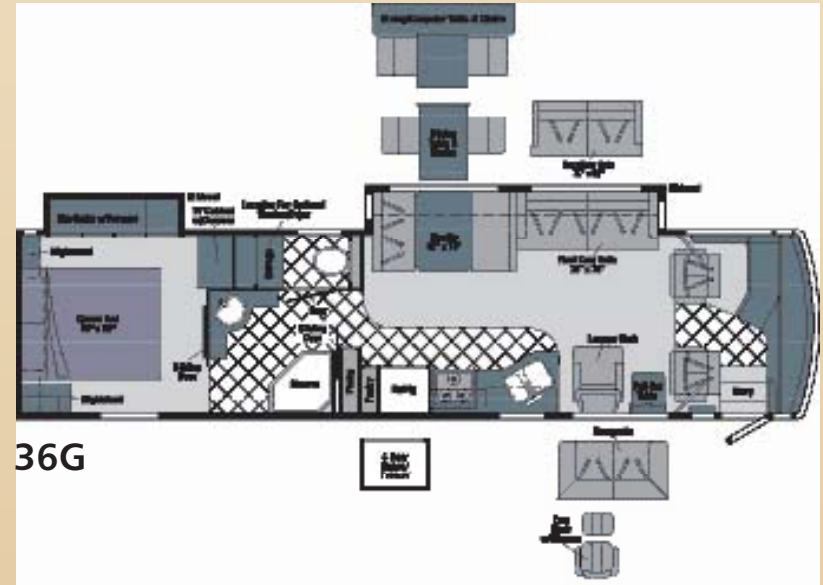
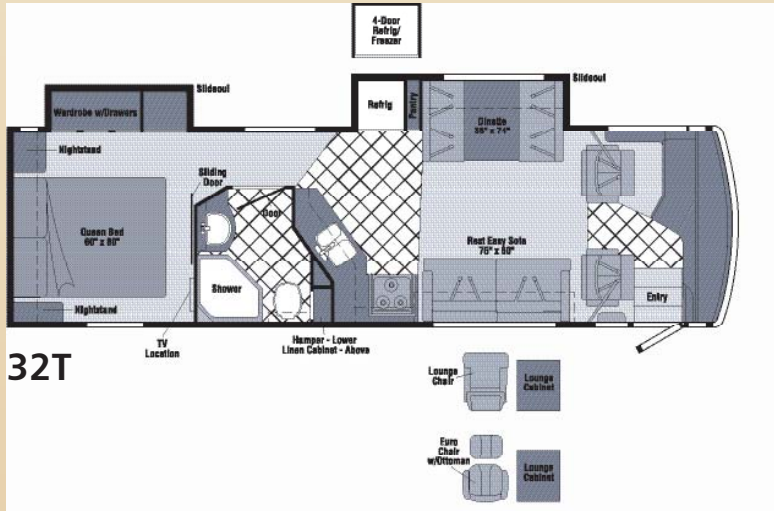




The **6,500 watt Onan® Marquis Gold™ generator** provides power wherever you go. A 7,500 watt Onan Quiet Diesel™ generator is also available.



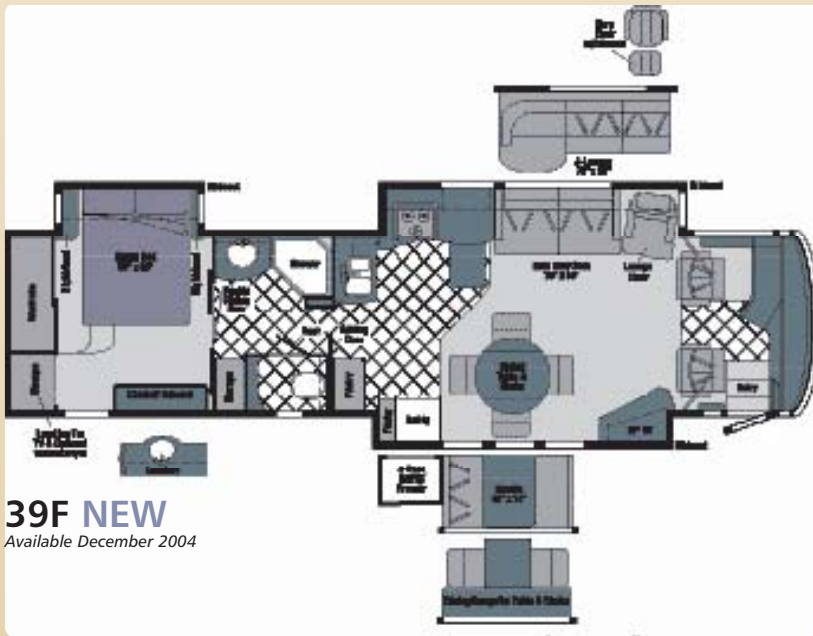
Diesel pushers are known for power and performance, which is exactly what you get from Meridian's 7.2L - 350-hp Caterpillar® diesel engine (NA 32T). Advanced electronic controls help it run smoother with greater fuel efficiency. An exhaust brake also comes standard, enabling you to use the engine to help slow the vehicle, promoting longer brake life. The engine links to the Allison® electronic control transmission with Smart Logic. It actually "learns" your driving habits and fine-tunes shifting points to maximize performance.

05 Meridian | FLOORPLANS



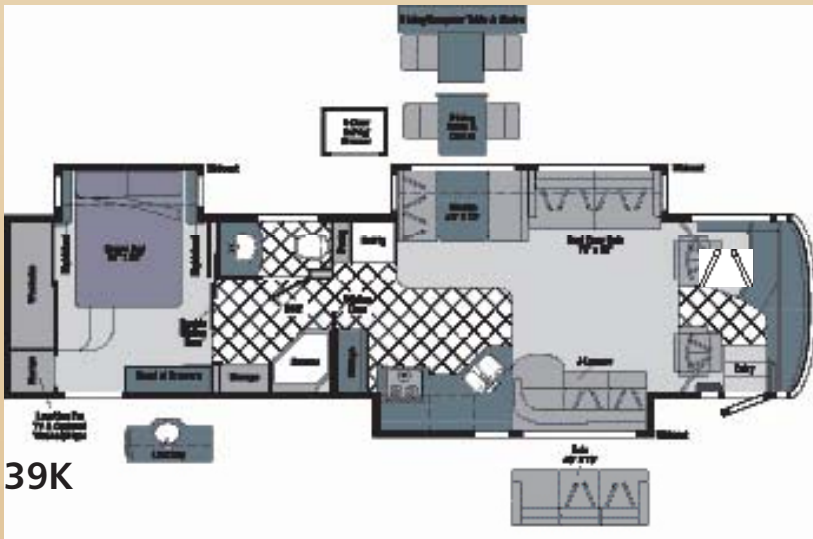
 Vinyl Tile Floorcovering  Seat Belts

Note: Dimensions shown are for sleeping space only and may vary due to styling differences. Dashed lines denote overhead storage areas.



39F NEW

Available December 2004



39K



Vinyl Tile Floorcovering



Seat Belts

Note: Dimensions shown are for sleeping space only and may vary due to styling differences. Dashed lines denote overhead storage areas.

EXTERIOR DESIGN

Drive in style. Choose from three full-body paint schemes to give your Itasca Meridian a style all its own.



Graphite



Malibu



Brownstone

05 Meridian | SPECIFICATIONS

Weights & Measures	32T	34H	36G	39F NEW	39K
Length	32'8"	34'9"	36'5"	39'4"	39'4"
Exterior Height ¹	11'7"	11'6"	11'7"	11'7"	11'7"
Exterior Width ²	8'5.5"	8'5.5"	8'5.5"	8'5.5"	8'5.5"
Exterior Storage ³ (cu. ft.)	81.3	89.6	107.8	79.0	141.6
Interior Height	6'8"	6'8"	6'8"	6'8"	6'8"
Interior Width	8'0.5"	8'0.5"	8'0.5"	8'0.5"	8'0.5"
Fresh Water Capacity w/Heater ⁴ (gal.)	93	93	93	93	93
Holding Tank Capacity ⁵ – Black / Gray (gal.)	64 / 53	62 / 54	54 / 55	62 / 55	54 / 55
LP Capacity ⁴ (gal.)	39	39	39	39	39
Fuel Capacity (gal.)	90	90	90	90	90
GCWR ⁶ (lbs.)	37,910	37,910	37,910	37,910	37,910
GVWR (lbs.)	27,910	27,910	27,910	27,910	27,910
GAWR – Front (lbs.)	10,410	10,410	10,410	10,410	10,410
GAWR – Rear (lbs.)	17,500	17,500	17,500	17,500	17,500
Wheelbase	190"	208"	228"	262"	262"

	32T	34H	36G	39F	39K	Automotive
S						Chassis Freightliner® Cummins® ISB 5.9L turbo-charged diesel 300-hp, rear radiator, Allison® 6-speed electronic 3,000 MH transmission, NeWay® front & rear air suspension, 160-amp. alternator, exhaust brake, four-wheel ABS, Wheels stylized aluminum
	S	S	S	S	S	Chassis Freightliner® Caterpillar® 7.2L turbo-charged diesel 350-hp, rear radiator, Allison® 6-speed electronic 3,000 MH transmission, NeWay® front & rear air suspension, 160-amp. alternator, exhaust brake, four-wheel ABS, Wheels stylized aluminum
S	S	S	S	S	S	Air Accessory Manifold quick connect, 50' air hose, pressure gauge, manual air shut off, Leveling Jacks hydraulic, manual control, Tire Tools wrench & leverage bar, Trailer Hitch ® 10,000-lbs. draw bar/500-lbs. maximum vertical tongue weight & wiring

	32T	34H	36G	39F	39K	Cab Area & Driver Conveniences
S	S	S	S	S	S	Cab Seats (fabric) w/3-point adjustable seat belts, armrests, lumbar support, multi-adjustable slide/recline & swivel, CD Holder , Compass electronic w/outdoor thermometer, Console Center Cabinet , Cruise Control , Defroster Fans (2) auxiliary 2-speed w/instrument panel switch, Exhaust Brake Switch , Floor Mat (driver) carpet, Map Lights , Power Door Lock keyless entry w/remote, Powerpoints (2) 12-volt DC, Shades light filtering, cab windows, Steering Wheel tilt w/power assist, SmartWheel™ Sunvisors (3) , Window (driver) full slider w/screen, Window (passenger) partial slider w/screen, Windshield Wipers intermittent, pantograph arms
0	0	0	0	0	0	Cab Seat ® 6-way power assist (driver)
0	0	0	0	0	0	Cab Seats ® 6-way power assist (driver & passenger)
0	0	0	0	0	0	Cab Seats (UltraLeather HP™) w/Meridian logo
0	0	0	0	0	0	Cab Seat ® passenger seat w/footrest
0	0	0	0	0	0	GPS Navigation System ®
0	0	0	0	0	0	Monitor System rearview color w/single camera & 1-way audio, Sony®
0	0	0	0	0	0	Sunvisors (2) powered
0	0	0	0	0	0	Trip Computer TripTek™

	32T	34H	36G	39F	39K	Entertainment
S	S	S	S	S	S	CB Prep antenna, antenna lead, 12-volt DC power supply, Entertainment Center (Exterior) CD player, DC receptacle, AC duplex receptacle, AM/FM radio w/remote, TV jack, radio antenna, speakers (2), lockable compartment, Radio Power Switch main/auxiliary battery, FM/AM (Cab) AM/FM/stereo, cassette/CD, weather band, remotes, roof-mounted flexible rubber antenna, speakers (4), Satellite System Ready , Telephone input & interior jacks, TV 20" Color AC flat face (LCD flat screen 32T), stereo w/remote, remote extenders, rear, TV Enhancement Package antenna (amplified), interior jacks, coax wiring, cable input, exterior jack, reminder light, Video Selection System
0	0	0	0	0	0	Compact Multi-Disc Changer w/remote
0	0	0	0	0	0	Deluxe Sound System w/5-channel QSround™ sound, amplifier, recessed speakers (5), bass speakers (2)
0	0	0	0	0	0	DVD/VCR Stereo combo w/remote, Sony®
0	0	0	0	0	0	Radios (4) 2-way
0	0	0	0	0	0	Satellite Dish Antenna RV digital, manual, elevation sensing unit
0	0	0	0	0	0	Satellite Dish Antenna RV digital, power
0	0	0	0	0	0	Satellite Dish RV digital, in-motion
0	0	0	0	0	0	Satellite Radio Sirius® (includes one-year, pre-paid subscription)
0	0	0	0	0	0	Stereo System rear, AM/FM/CD player, alarm
S	S	S	S	S	S	TV 24" Color AC Stereo flat-face, front
					S	TV 27" Color AC Stereo w/remote, front

	32T	34H	36G	39F	39K	Interior
S	S	S	S	S	S	Accessory Package rechargeable flashlight, rechargeable vacuum cleaner, Ceiling vinyl, Shade front wraparound, pleated w/wands, Lights ceiling w/wall switches, incandescent, Light decorative dinette, Lights decorative wall lamp(s), Lights fluorescent lights, recessed, galley, dinette, lounge w/wall switches, Lights reading, auxiliary, Mini Blinds galley & bath area, Roof Vent Shade Package , Shades pleated, day/night, lounge, dinette and bedroom areas, Sliding Stepwell Cover Panel powered, Windows dual-glazed/thermo-insulated, flush-mounted
0	0	0				Ceiling Fan ®
	S	S			S	Mirror
S	S					Pictures (2) framed

	32T	34H	36G	39F	39K	Cabinetry
0	0	0	0	0	0	Concert Cherry stile-and-rail construction w/arched, raised-panel inserts on upper doors & raised-panel inserts on lower doors
0	0	0	0	0	0	Portsmouth Oak stile-and-rail construction w/arched, raised-panel inserts on upper doors & raised-panel inserts on lower doors
0	0	0	0	0	0	Washed Maple stile-and-rail construction w/arched, raised-panel inserts on upper doors & raised-panel inserts on lower doors
0	0	0	0	0	0	Sierra Maple stile-and-rail construction w/arched, raised-panel inserts on upper doors & raised-panel inserts on lower doors

	32T	34H	36G	39F	39K	Countertops
S	S	S	S	S	S	Solid-Surface galley & bath w/backsplash

	32T	34H	36G	39F	39K	Floorcovering
S	S	S	S	S	S	Carpeting w/pad, Vinyl Tile galley, bath & cab area

	32T	34H	36G	39F	39K	Furniture
S	S	S	0	0	S	Full Comfort Dinette (Fabric) w/access to storage below
0	0	0				Banquette ® (Fabric) w/throw pillows, access to storage below
0	0	0				Banquette ® (UltraLeather HP™) w/throw pillows, access to storage below
		S	S			Chair Lounge (Fabric) hoop-base, cabinet w/table
				S		Chair Lounge (Fabric) hoop-base
0						Chair Lounge (Fabric) hoop-base, cabinet

32T	34H	36G	39F	39K	Furniture
0	0	0	0		Chair² Lounge (UltraLeather HP[™]) hoop-base
0	0	0	0		Chair² Lounge (UltraLeather HP[™]) Euro Recliner w/ottoman
0	0	0	0		Dining Table & Chairs (2) free standing, (2) folding
0	0	0	0		Dining/Computer Table & Chairs (2) free standing, (2) folding
				S	Entertainment Center 27" TV stereo w/remotes
				0	J-Lounge² (Fabric)
				0	J-Lounge² (UltraLeather HP[™])
S	S		S	S	Multi-Position Lounge² (75" x 60" / Fabric) throw pillows & fold-down armrest w/beverage holder
			S		Multi-Position Lounge² (75" x 70" / Fabric) throw pillows
0	0	0	0	0	Multi-Position Lounge² (75" x 60" / UltraLeather HP[™])
0	0	0	0	0	Multi-Position Lounge² (75" x 60" / Fabric) w/dual recliners
0	0	0	0	0	Multi-Position Lounge² (75" x 60" / UltraLeather HP[™]) w/dual recliners
				0	Sofa² (Fabric) access to storage below, throw pillows
				0	Sofa² (UltraLeather HP[™]) access to storage below, throw pillows


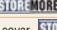
32T	34H	36G	39F	39K	Galley
S	S	S	S	S	Faucet single-control w/pullout sprayer, Moen [®] Galley Cabinet , Light fluorescent under cabinet, Microwave Oven w/range fan, exterior vent, residential 30", stainless steel, Sharp. [®] Mirror(s) , Pantry(ies) slideout, Powerpoints 12-volt DC, Range Cover countertop material, Range 3-burner w/large oven, recessed, sealed burners, stainless steel, Amana. [®] Refrigerator/Freezer large double-door, stainless steel, Norcold. [®] Roof Vent powered ventilator fan, insulated, Silverware Tray , Sink double, molded, w/ sink covers (countertop material), Wastepaper Basket , Water Purification System Everpure [®]
	S				Appliance Storage Cabinet , Spice Rack
		S			Countertop Extension flip-up
		S		S	Cutting Board slideout
S	S				Glass Partition
0	0	0	0	0	Microwave/Convention Oven w/range fan, exterior vent, residential 30", stainless steel, Sharp. [®]
0	0	0	0	0	Range Top 3-burner w/storage below, recessed, sealed burners, stainless steel, Amana. [®]
0	0	0	0	0	Refrigerator/Freezer² 4-door w/ice maker, stainless steel, Norcold. [®]
0	0	0	0	0	Refrigerator/Freezer large double-door w/ice maker, stainless steel, Norcold. [®]
S	S	S	S		Towel Rack wire
S	S		S		Utility Tray tip-out

32T	34H	36G	39F	39K	Bath
S	S	S	S	S	Cabinet lavatory, Cabinet linen, Faucet (lavatory) dual-control, Moen. [®] Faucet (shower) single-control, fixed showerhead w/Posi-Temp. [®] Hair Dryer wall-mounted w/night-light, Light shower, Lights make-up, Robe Hook , Roof Vent insulated, power, Shower w/wall surround, Shower Door textured glass, Sink oval, Skylight , Tissue Holder , Toilet porcelain w/foot-pedal flush, Towel Rack 3-rod
	S	S	S	S	Chair Rail (private toilet area)
	S	S			Hamper tip-out
S		S	S	S	Medicine Cabinet
0	0	0	0	0	Shower Package fold-down shower seat, hand-held showerhead w/water shut-off valve
	S		S	S	Towel Bar
S	S	S	S		Towel Ring

32T	34H	36G	39F	39K	Bedroom
S	S	S	S	S	Bed queen, Serta. [®] innerspring w/underbed storage (NA 39F & 39K), bedspread, pillows, throw pillows, headboard, Lights reading, Light decorative ceiling light w/dimmer, Light decorative wall lamp(s), Mirror , Nightstands , Powerpoint 12-volt DC receptacle, Wainscoting w/chair rail, Wardrobe Cabinet carpeted floor, clothes rod, light, cedar-lined, mirrored door(s)
0	0	0	0	0	Sleep Number[®] queen-size mattress by Select Comfort [™]
			S	S	Chest of Drawers
			0	0	Lavatory faucet, sink (oval), mirror, decorative wall lamps

32T	34H	36G	39F	39K	Exterior
S	S	S	S	S	Awning Package¹ electric, entry & patio (w/wind sensor & remote), Awning Rails w/rain gutters, Door entrance w/separate screen door w/logo, deadbolt lock, Entrance Door Step single, electric w/doorjamb switch, Full Body Paint Packages Malibu, Graphite, Brownstone, Ladder , Lights fog lamps, Light porch w/interior switch, Light under hood, Lights docking lamps, Light service, driver side, Locking Fuel-fill Doors (2) , Mirrors electric remote w/defrost & turn-signal light, Mud Flaps (2) rear, Receptacle AC duplex, Sidewall Skin 1-piece smooth fiberglass, high-gloss, Storage Compartments smooth valance panels, trunk liner, gas cylinders, TriMark [®] KeyOne [™] System, paddle latch, lights
0	0	0	0	0	Air Horns roof-mounted
0	0	0	0	0	Awnings² windows
0	0	0	0	0	Compartment Tray(s) slideout
0	0	0	0	0	Front Protective Mask
	S	S	S	S	Lamps daytime running
0	0	0	0	0	Mud Guard full width, rear
	0	0	0	0	Step Ladder folding
0	0	0	0	0	Undercoating

32T	34H	36G	39F	39K	Systems
S	S	S	S	S	Automotive Heater/Air Conditioner , Auxiliary Start Circuit , Batteries (Coach) (2)¹ deep cycle, Battery (Coach) disconnect system, Battery Charge Control automatic dual, TRUEAIR[®] Residential Central Air Conditioning System , Central Air Heat Pump , Drain 1 1/2" water tank, Electrical Distribution System AC & DC breaker panels, 55-amp. electronic converter/charger, ² Electrical System Display Center , Generator 6,500 watt, Onan [®] Marquis Gold, [™] LP, Generator/Shoreline Automatic Changeover Switch , Inverter² DC/AC, 300 watt, ONE PLACE[®] Systems Center wall-mounted, courtesy light, battery digital voltmeter, POWERLINE[™] energy management display, generator hourmeter gauge, generator start/stop switch, heating and A/C thermostat, holding tank levels, LP tank level, solar panel/battery charger light, water heater switch, water heater on light & pilot indicator light, water pump switch, water tank level, Power Cord 50-amp., POWERLINE[™] Energy Management System , Service Compartment (Drainage) drainage valves, holding tank flushing system, 10' sewer hose w/  Quick Connect coupling valve,  QuickPort service connection hatch, Service Compartment (Electrical/Water) cable input, city water hook-up/tank diverter fill, drain for fresh water system, exterior wash station w/pump switch, paper towel holder, power cord,  QuickPort service connection hatch, shoreline/generator automatic changeover switch, telephone input, portable satellite hookup, Solar Panel 10 watt battery charger, Tank flushing system, black tank only, Tank holding, heated compartment, Tank LP , permanent mount w/gauge, TRUELEVEL[™] holding tank monitoring system, Water Heater 10-gallon electronic ignition, LP gas/120 vac w/motoraid, Water Hookup city, Water Pump demand, variable speed, Water Tank Fill pressurized city hookup w/diverter valve, Water Tank Fill w/locking compartment door, Water System Winterization Package water heater bypass valve & siphon tube
S					Furnace 35,000 BTU, low profile
	S	S	S	S	Furnace 40,000 BTU, low profile
0	0	0	0	0	Generator 7,500 watt, Onan. [®] Quiet Diesel [™]
0	0	0	0	0	Inverter/Charger² DC/AC, 2,000 watt w/remotes panel
0	0	0	0	0	Washer/Dryer Combination

32T	34H	36G	39F	39K	Slideouts
			S	S	Slideout Room bed w/slidoor cover
				S	Slideout Room J-lounge/galley w/slidoor cover
				S	Slideout Room w/dining/refrigerator w/slidoor cover, 
S	S	S			Slideout Room wardrobe w/slidoor cover
		S		S	Slideout Room sofa/dinette w/slidoor cover, 
				S	Slideout Room lounge/galley w/slidoor cover, 
		S			Slideout Room sofa/galley w/slidoor cover, 
S					Slideout Room refrigerator/dinette w/slidoor cover, 

32T	34H	36G	39F	39K	Safety
S	S	S	S	S	Assist Bars interior, Assist Handle exterior, acrylic w/logo, Bumpers front & rear, Child Seat Tether Anchor , Detectors/Alarms LP leak, smoke, carbon monoxide, Fire Extinguisher 10 B.C., Ground Fault Interrupter , Light center high-mount brake lamp, Light(s) courtesy w/wall switch(es), Seat Belts cab, 3-point, Seat Belts lap (in selected areas), Window escape, Windshield laminated safety glass

32T	34H	36G	39F	39K	Warranty ¹
S	S	S	S	S	12-month/15,000-mile basic limited warranty¹ 36-month/36,000-mile warranty on structure¹ 10-year limited parts & labor warranty on roof skin¹

- The height of each model is measured to the top of the tallest standard feature and is based on the curb weight of a typically equipped unit. The actual height of your vehicle may vary by several inches depending on chassis or equipment variations. Please check with your dealer for further information.
- Meridian floorplans feature a wide-body design — over 96". In making your purchase decision, you should be aware that some states restrict access on some or all state roads to 96" in body width. Before making your purchase decision, you should confirm the road usage laws in the states of interest to you.
- Not all items available in combination. See dealer for details.
- Capacities shown are tank manufacturer's listed water capacity (W.C.). Actual filled LP capacity is 80% of listing due to overfilling prevention device on tank.
- The load capacity of your motor home is designated by weight, not by volume, so you cannot necessarily use all available space when loading your motor home.
- Actual towing capacity is dependent on your particular loading and towing circumstances which includes GVWR, GAWR, and GCWR as well as adequate trailer brakes. Please refer to the Operator's Manual of your vehicle for further towing information.
- See separate chassis warranty details provided in owner's packet.
- See your dealer for complete warranty information.
- Capacities are based on measurements prior to tank installation. Slight capacity variations can result due to installation applications.

NA Not Available

S Standard

0 Optional

Winnebago Industries[™] continuing program of product improvement makes specifications, equipment, model availability and prices subject to change without notice. Comparisons to other motor homes are based on the most recent information available.

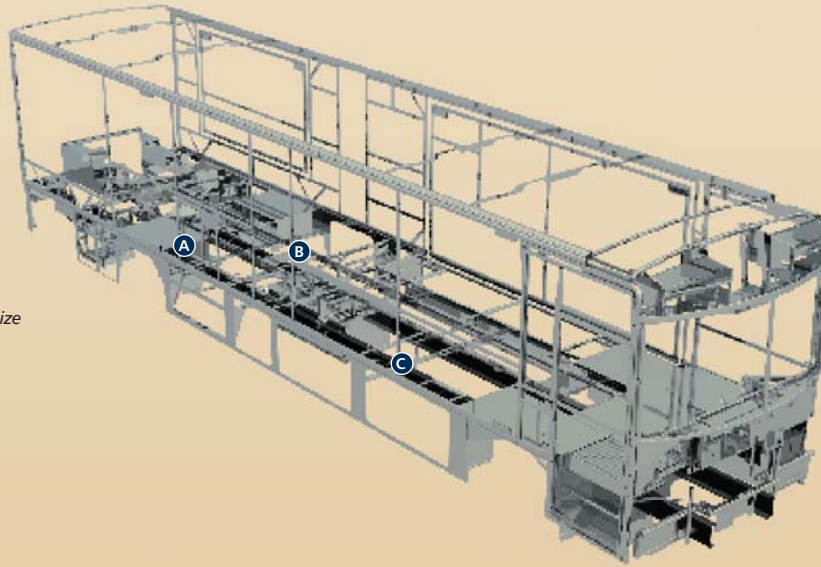


Not all motor homes are created equal. SuperStructure® is the term given to Winnebago Industries' structural motor home design and construction. Rather than a single component, it is the culmination of design integration that incorporates steel and aluminum sub-structures, composite-design laminated floor risers, interlocking joint technology and Thermo-Panel® floor, roof and sidewalls to form an incredibly strong, durable vehicle body.

A Laminated risers feature a welded aluminum core for superior strength and provide a stable base for the floor structure and storage compartments.

B Critical steel components are treated with an advanced electrodeposition coating process that provides superior corrosion protection.

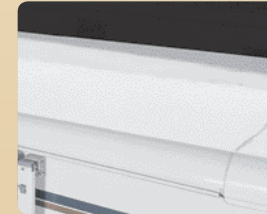
C The foundation substructure assembly is precision-aligned to maximize longitudinal and cross-coach support, as well as strength and durability.



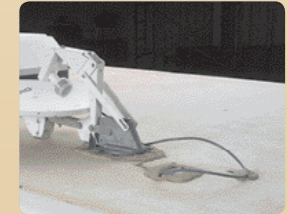
Interlocking joint construction utilizes advanced aluminum structural components to create integrated floor-to-sidewall and sidewall-to-roof joints. This design effectively distributes the weight of the walls and roof, making a stronger and more durable body than competitor designs that require screws to carry the weight.

We invented Thermo-Panel® sidewall construction and, over the years, have perfected this innovative composite construction process. It combines an exterior fiberglass panel, high-density block foam insulation and welded aluminum support structures to create some of the strongest, most durable and lightweight sidewalls in the industry.

Built to a higher standard. The Meridian features a crowned, one-piece fiberglass roof, backed with a 10-year limited parts-and-labor roof skin warranty. Fiberglass offers superior strength, attractiveness and durability over the rubber roofs found on many competitive models which can chalk, streak and degrade over time. Fiberglass also provides increased puncture and tear resistance.



1-year-old Itasca fiberglass roof



1-year-old competitor's rubber roof



Committed to service. We back our motor homes with the industry's best service after the sale.

- 12-month/15,000-mile basic limited warranty
- 36-month/36,000-mile warranty on structure
- Standard 10-year limited parts-and-labor roof skin warranty
- Complimentary 24-hour roadside assistance program
- TripSaver Fast Track Parts. TripSaver guarantees that in-stock warranty parts ship directly to your dealer within 24 hours.
- National dealer service network



Recognized quality. Recreation Vehicle Dealer Association members annually rate RV manufacturers on the quality of their products, and sales and service support. Winnebago Industries has achieved the coveted Quality Circle award every year since its inception, the only RV manufacturer to do so.



WARNING: Joining WIT has been known to cause excessive fun. Winnebago-Itasca Travelers (WIT) is a club for owners of Winnebago Industries motor homes. WIT is a great way to meet people and offers you:

- Caravans and rallies
- Local and state group activities
- RV travel benefits

winnebagoind.com
NYSE listing: WGO

For Sales and Service Information Contact:



©2004 Winnebago Industries, Inc.



Printed in USA

Seat belts are your most important hookup. Always buckle up.