

OKANAGAN

Renowned for Quality...

...Respected for Innovation



— 2007 —
TRUCK CAMPERS

THE OKANAGAN CAMPER

Designed with off-road use in mind, our laminated construction provides you with a warm and structurally superior Canadian made camper. Our commitment to reducing weight while maintaining superior strength puts the Okanagan Camper in the highly regarded position it enjoys in the market-place today.

We offer a wide variety of standard and optional benefits that allow you to choose exactly the features you need for your camping enjoyment. In addition, there are five stylish fabric combinations available, each complimenting the interior wall paneling, carpeting and flooring colours.

On the practical side, you'll find our very bright and functional kitchen area has lots of storage space with upper and lower cabinets as well as large conveniently located drawers. The spacious dining area offers you ample elbowroom, featuring a large window for a great view and excellent ventilation. The functional bathroom offers a full-height fiberglass shower area in most models, a vanity sink and medicine cabinet for your added convenience. In the bedroom area, you will find a comfortable spring-filled mattress with a décor-matching bedspread, surrounded by closets with abundant storage.



80W

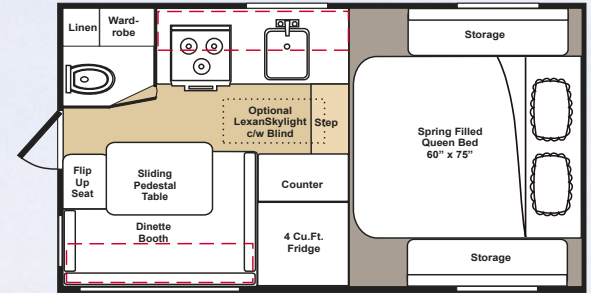
Box Length:	7' 11"
Overall Length:	14' 5"
Overall Width:	7' 10"
Overall Height:	7' 7"
Bedroom Ceiling Height:	3' 0"
Inside Ceiling Height:	6' 6"
Dry Weight* (Lbs./Kgs.):	1,629 / 739
West Coast Conv. Pkg (Lbs./Kgs.):	13 / 5.9
Fresh Water (Imp/US Gal.):	17/ 20
Grey Water (Imp/US Gal.):	N/A
Black water (Imp/US Gal.):	9 / 11

8' Long Box or 6'6" Short Box Truck Recommended

Deluxe Vinyl Floor Covering

Superior Berber Carpet

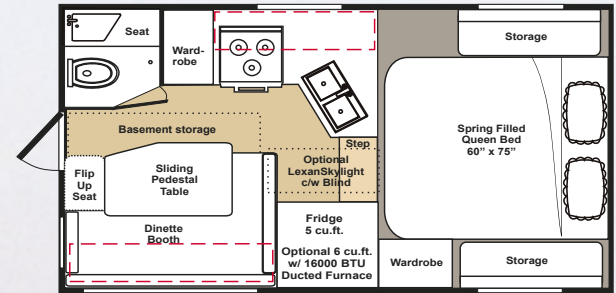
Overhead Cabinet



89WS

Box Length:	8' 11"
Overall Length:	15' 6"
Overall Width:	7' 10"
Overall Height:	8' 0"
Bedroom Ceiling Height:	3' 3"
Inside Ceiling Height:	6' 5"
Dry Weight* (Lbs./Kgs.):	1,894 / 859
West Coast Conv. Pkg (Lbs./Kgs.):	76.7 / 34.8
Fresh Water (Imp/US Gal.):	25/ 30
Grey Water (Imp/US Gal.):	13 / 15
Black water (Imp/US Gal.):	12 / 14

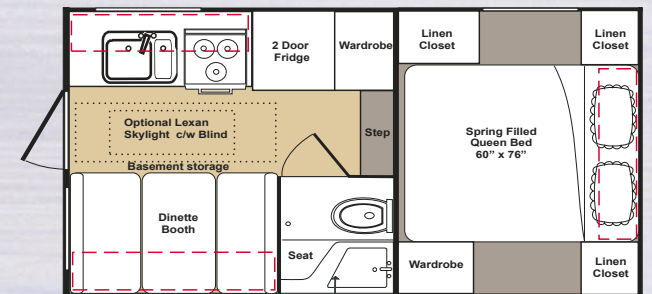
8' Long Box or 6'6" Short Box Truck Recommended



90W

Box Length:	9' 0"
Overall Length:	16' 6"
Overall Width:	8' 0"
Overall Height:	8' 0"
Bedroom Ceiling Height:	3' 9"
Inside Ceiling Height:	6' 6"
Dry Weight* (Lbs./Kgs.):	2,245 / 1,018
West Coast Conv. Pkg (Lbs./Kgs.):	40 / 18.2
Fresh Water (Imp/US Gal.):	45 / 54
Grey Water (Imp/US Gal.):	34 / 41
Black water (Imp/US Gal.):	15 / 18

8' Long Box or 6'6" Short Box Truck Recommended

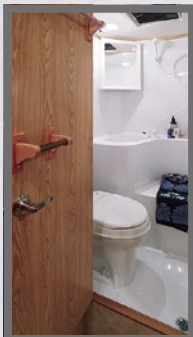
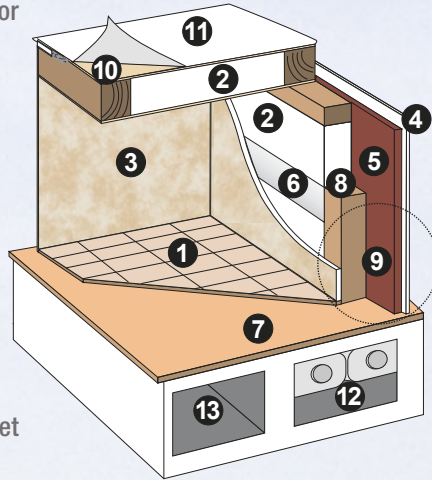


One Piece Full Height Fiberglass Shower Stall

*Actual weight of units may vary. Dry weight is the base weight of the unit with no options. Does not include liquids, personal belongings or dealer installed items. Subject to change without notice.

CAMPER CONSTRUCTION

1. High Density Floor Covering
2. Expanded Polystyrene Insulation (Korolite)
3. Water Resistant Interior Vinyl Panelling
4. Smooth Fibre Glass Exterior Layer
5. Luan Plywood Layer
6. Aluminum Cabinet Reinforcement
7. Water Resistant Plywood Floor
8. Kiln Dried Finger-Joint Wood Frame
9. Fully Laminated Electronic Pinch-Rolled Construction
10. High Grade Adhesive
11. One-Piece Dicor Britek TPO Vinyl Roof
12. Heated and Enclosed Holding Tanks
13. Heated Basement

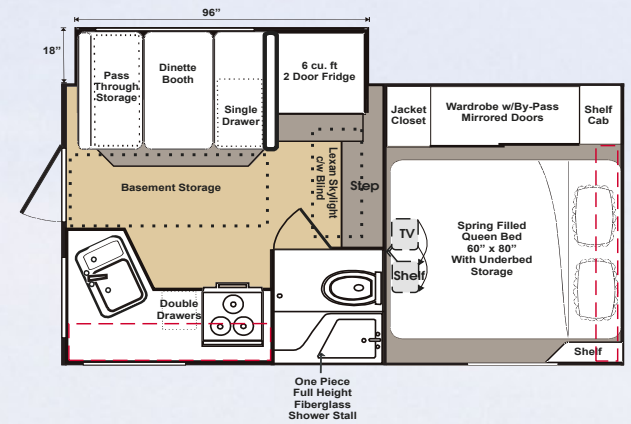


811SL

Box Length: 9' 0"
Overall Length: 16' 6"
Overall Width w/ Slide In: 8' 1"
Overall Width w/ Slide Out: 9' 7"
Overall Height: 8' 0"
Bedroom Ceiling Height: 3' 9"
Inside Ceiling Height: 6' 6"
Dry Weight* (Lbs./Kgs.): 2,557 / 1,160
West Coast Conv. Pkg (Lbs./Kgs.): . 84.3 / 38.3
Fresh Water (Imp/US Gal.): 45 / 54
Grey Water (Imp/US Gal.): 34 / 41
Black water (Imp/US Gal.): 15 / 18

8' Long Box or 6'6" Short Box Truck Recommended

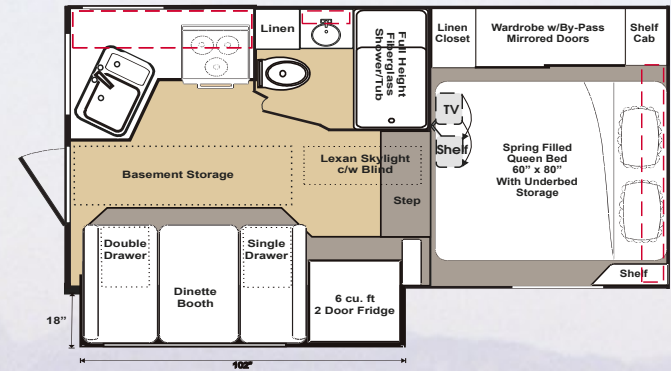
Deluxe Vinyl Floor Covering
Superior Berber Carpet
••• Overhead Cabinet



96DB

Box Length: 10' 1"
Overall Length: 17' 7"
Overall Width w/ Slide In: 8' 1"
Overall Width w/ Slide Out: 9' 7"
Overall Height: 8' 0"
Bedroom Ceiling Height: 3' 9"
Inside Ceiling Height: 6' 6"
Dry Weight* (Lbs./Kgs.): 2,699 / 1,224
West Coast Conv. Pkg (Lbs./Kgs.): . 84.3 / 38.3
Fresh Water (Imp/US Gal.): 45 / 54
Grey Water (Imp/US Gal.): 34 / 41
Black water (Imp/US Gal.): 15 / 18

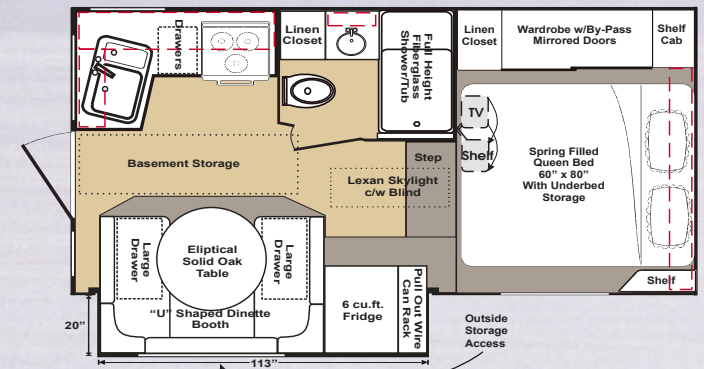
8' Long Box Truck Recommended



106UDB

Box Length: 10' 10"
Overall Length: 18' 4"
Overall Width w/ Slide In: 8' 1"
Overall Width w/ Slide Out: 9' 9"
Overall Height: 8' 0"
Bedroom Ceiling Height: 3' 9"
Inside Ceiling Height: 6' 6"
Dry Weight* (Lbs./Kgs.): 2,968 / 1,345
West Coast Conv. Pkg (Lbs./Kgs.): . 93.3 / 42.3
Fresh Water (Imp/US Gal.): 45 / 54
Grey Water (Imp/US Gal.): 34 / 41
Black water (Imp/US Gal.): 15 / 18

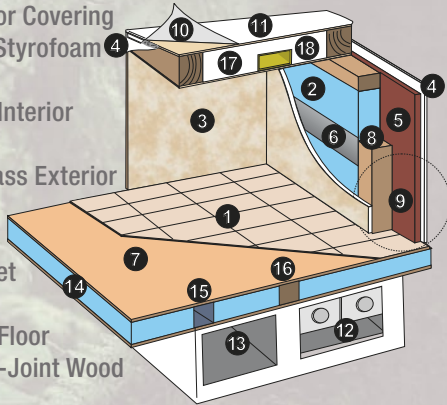
8' Long Box Truck Recommended



*Actual weight of units may vary. Dry weight is the base weight of the unit with no options. Does not include liquids, personal belongings or dealer installed items. Subject to change without notice.

THE "ULTIMATE SUITE" CAMPER CONSTRUCTION

- High Density Floor Covering
- 1" High Density Styrofoam SM
- Water Resistant Interior Vinyl Panelling
- Smooth Fibre Glass Exterior
- Luan Plywood Layer
- Aluminum Cabinet Reinforcement
- Fully Laminated Floor
- Kiln Dried Finger-Joint Wood Frame
- Fully Laminated Electronic Pinch-Rolled Construction
- High Grade Adhesive
- One-Piece Dicor Britek TPO Vinyl Roof
- Heated and Enclosed Holding Tanks
- Heated Basement
- 1 1/2" High Density Styrofoam SM
- 1" x 1 1/2" Welded Tube Steel Framing
- 1" x 1 1/2" Kiln Dried Finger-Joint Wood Frame
- Peaked Laminated Roof w/Block Foam Insulation
- Ducted Roof Air Venting



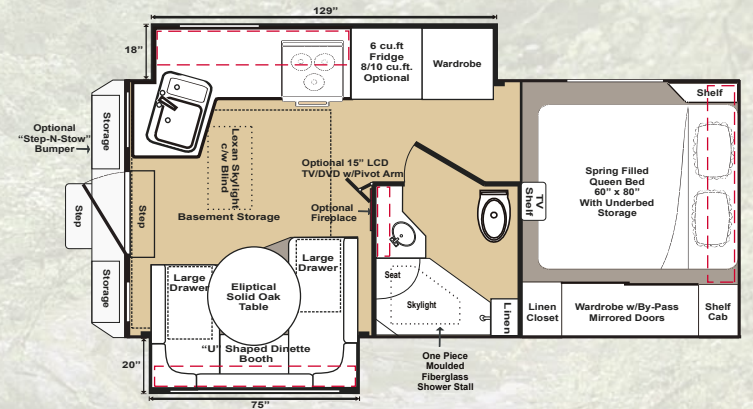
116ULT

"THE ULTIMATE SUITE" SERIES

Box Length: 11' 6"
 Overall Length: 19' 1"
 Overall Width w/ Slide In: 8' 1"
 Overall Width w/ Slide Out: 11' 5"
 Overall Height: 8' 6"
 Bedroom Ceiling Height: 4' 2"
 Inside Ceiling Height: 6' 4"
 Dry Weight* (Lbs./Kgs.): 3,975 / 1,803
 West Coast Conv. Pkg (Lbs./Kgs.): 105.3 / 47.8
 Fresh Water (Imp/US Gal.): 52 / 63
 Grey Water (Imp/US Gal.): 37 / 45
 Black water (Imp/US Gal.): 37 / 45

8' Long Box Truck.

Deluxe Vinyl Floor Covering Superior Berber Carpet Overhead Cabinet

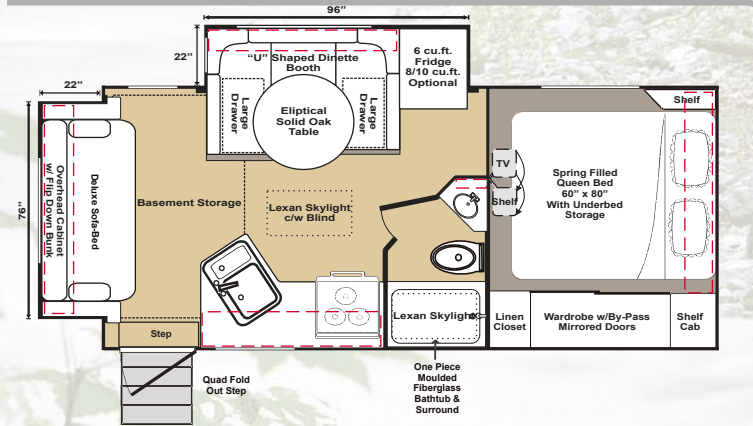
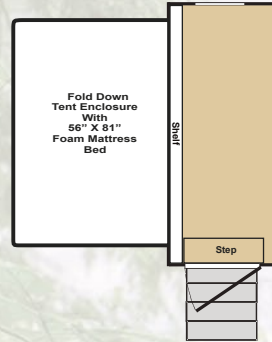


117DBL

"THE ULTIMATE SUITE" SERIES

New For 2007

Optional Floor Plan
 Fold-down tent enclosure includes 56" x 81" foam mattress bed for expanded sleeping capacity and space



Box Length: 11' 6"
 Overall Length: 19' 1"
 Overall Length w/ Rear Slide Out: 20' 11"
 Overall Width w/ Slide In: 8' 1"
 Overall Width w/ Slide Out: 9' 11"
 Overall Height: 8' 6"
 Bedroom Ceiling Height: 4' 2"

Inside Ceiling Height: 6' 4"
 Dry Weight* (Lbs./Kgs.): 3,973 / 1,802
 West Coast Conv. Pkg (Lbs./Kgs.): 108.3 / 49.2
 Fresh Water (Imp/US Gal.): 52 / 63
 Grey Water (Imp/US Gal.): 37 / 45
 Black water (Imp/US Gal.): 37 / 45

8' Long Box Truck.

INTERIOR COLOUR SCHEMES (MAIN FABRIC)



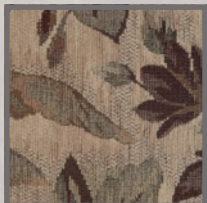
ARIZONA SLATE



TUDOR GREEN



BRUSHSTROKES BLUE



FRIAR BROWN



BORDEAUX BURGUNDY

ABOUT YOUR VEHICLE

As every truck is built and designed differently by each manufacturer, it is important to know what your truck's capabilities are. The best resources for accurate information are supplied with your truck owner's manual and on the decal posted on the driver side door post or in the glove box. Truck dealers also have separate carrying guides available to assist you when determining your truck's capabilities. This information can change every model year. Also, understand that there are limitations as to what your truck can carry safely.

The following ratings definitions are important to understand:

GVWR (Gross Vehicle Weight Rating) is the maximum allowable total load weight (vehicle and all cargo including camper, fuel, passengers, etc.) as set by the truck manufacturer.

GAWR (Gross Axle Weight Rating) is the maximum allowable load carrying capacity of each individual axle as set by the truck manufacturer.

As each truck will weigh differently based on options, we recommend that you have your truck weighed at a commercial weigh scale with fuel tank(s) full and occupants in the vehicle. Subtract this weight from the GVWR to determine your truck's cargo carrying capacity. **Do not exceed the GVWR at any time.**

The GVWR of your truck cannot be changed by adding airbags, helper springs, heavier shocks, etc., however these items will help to stabilize the load for safer handling while driving.

West Coast Leisure Homes Ltd. does not make any warranties or representations, express or implied, as to the capabilities, uses, or ratings of your truck or tow vehicle.

*Actual weight of units may vary. Dry weight is the base weight of the unit with no options. Does not include liquids, personal belongings or dealer installed items. Subject to change without notice.

OKANAGAN "ULTIMATE SUITE" CAMPER SERIES

At West Coast Leisure Homes Ltd., we understand that truck campers are no longer just used for those short weekend outings. In response we have created the "Ultimate Suite" camper series, designed for those who want to enjoy the RV lifestyle year round in a truck camper.

The "Ultimate Suite" camper will keep you comfortable with thermal pane windows and superior insulation that is unsurpassed in the truck camper industry. The massive basement storage area, which also contains the large holding tanks, is heated by the furnace to ensure comfortable RVing. We use High Density Styrofoam SM insulation in all of our laminated components, giving you a structurally superior and warmer camper than traditionally built campers.

Imagine RVing on a cool wet day warming yourself by the Electric Fireplace (available in the 116ULT), and watching your favorite DVD on a 15" LCD flat screen TV. These are just a couple of the many features that set us apart from ordinary truck campers.

*Okanagan "Ultimate Suite" campers...
...a new RV Lifestyle.*



116ULT Shown in Friar Brown



GENERAL FEATURES	80W	89WS	90W	811SL	96DB	106UDB	116ULT	117DBL
Moulded Gel Coat Fiberglass Front Nose Cap	N/A	Std	Std	Std	Std	Std	Std	Std
Slide Out - Electric Rack And Pinion Gear System	N/A	N/A	N/A	Std	Std	Std	Std x 2	Std x 2
Fold Down Tent Enclosure	N/A	N/A	N/A	N/A	N/A	N/A	N/A	Opt
Exterior Basement Storage	N/A	Std	Std	Std	Std	Std	Std	Std
Heated And Enclosed Holding Tanks In Basement	N/A	N/A	Std	Std	Std	Std	Std	Std
Insulated Radius Compartment Doors	Std	Std	Std	Std	Std	Std	Std	Std
Brushed Nickle Cabinet Door Hardware	Std	Std	Std	Std	Std	Std	Std	Std
7' Rear Awning	Opt	Opt	Opt	Opt	Opt	Opt	Opt	N/A
Box Awnings (Length) Roll Out Awning on 117DBL only	Opt. (9 ft.)	Opt (10 ft.)	Opt (10 ft.)	Opt (10 ft.)	Opt (8 ft.)	Opt (9 ft.)	Opt (10 ft.)	Opt (11 ft.)
Slide Out Awning Topper	N/A	N/A	N/A	Opt	Opt	Opt	Opt x 2	Opt x 2
Thermal Sealed Solar Reflective Bronze Windows	Opt	Opt	Opt	*C-Pkg	*C-Pkg	*C-Pkg	*C-Pkg	*C-Pkg
Mechanical "HappiJacs" With Drill Adapter	Std	Std	Std	Std	Std	Std	Std	Std
Electric "HappiJacs" With Remote Control	Opt	Opt	Opt	*C-Pkg	*C-Pkg	*C-Pkg	*C-Pkg	*C-Pkg
Dual Wheel Swing Out Camper Jack Brackets	Opt	Opt	Opt	Opt	Opt	Opt	*C-Pkg	*C-Pkg
Aluminum Bumper c/w Fold Down Step	N/A	N/A	Opt	Opt	Opt	Opt	Opt	N/A
"Step-N-Stow" Aluminum Bumper c/w Fold Down Step	N/A	N/A	Opt	Opt	Opt	Opt	Opt	N/A
2.5KW Onan LP Generator	N/A	N/A	Opt	Opt	Opt	Opt	Opt	Opt
Generator Ready w/Remote Switch	N/A	N/A	Opt	Opt	Opt	Opt	Opt	Opt
Large Swing Out Entrance Handle	*C-Pkg	*C-Pkg	*C-Pkg	Std	Std	Std	Std	Std
Roof Rack And Ladder	Opt	Opt	Opt	Std	Std	Std	Std	N/A
AM/FM Cassette Stereo With 2 Speakers	N/A	N/A	Std	Std	Std	Std	N/A	N/A
AM/FM/CD Player Stereo With 2 Speakers	N/A	Opt	*C-Pkg	*C-Pkg	*C-Pkg	*C-Pkg	Std	Std
12 Volt 15" LCD Screen TV & DVD Player w/ Swing Arm Extension	N/A	Opt	Opt	Opt	Opt	Opt	Opt	Opt
Skylight c/w Solar Reflective Pleated Shade	Opt	Opt	Opt	Std	Std	Std	Std	Std
Skylight in Bathroom	N/A	N/A	N/A	N/A	Opt	Opt	Std	Std
"U" Shaped Dinette	N/A	N/A	N/A	N/A	N/A	Std	Std	Std
Electric Fireplace	N/A	N/A	N/A	N/A	N/A	N/A	Opt	N/A
Roof Air Conditioner	N/A	Opt	Opt	Opt	Opt	Opt	Ducted Air	Ducted Air
TV Antenna w/ Booster And Exterior Cable Hook-Up	Opt	Opt	Opt	Std	Std	Std	Std	Std
Satellite Dish w/ Digital Magic Sensor TV Ant. w/ Booster	Opt	Opt	Opt	Opt	Opt	Opt	Opt	Opt
Solar Panel Prewire	Opt	Opt	Opt	Opt	Opt	Opt	Opt	Opt
Oak Magazine And Spice Racks	Opt	Opt	Opt	Opt	Opt	Opt	Opt	Opt
Overhead Folding Bunk Enclosure	N/A	N/A	N/A	N/A	N/A	N/A	Opt	Opt
BEDROOM	80W	89WS	90W	811SL	96DB	106UDB	116ULT	117DBL
Colour Coordinated Bedspread	Std	Std	Std	Std	Std	Std	Std	Std
Pillows And Shams	*C-Pkg	*C-Pkg	*C-Pkg	Std	Std	Std	Std	Std
Deluxe Spring Filled Mattress	60" X 76"	60" X 76"	60" X 76"	60" X 80"	60" X 80"	60" X 80"	60" X 80"	60" X 80"
Underbed Storage With Gas Lift Struts	N/A	N/A	N/A	Std	Std	Std	Std	Std
Fantastic Fan (Reversing with thermostat control) In Bedroom	Opt	Opt	Opt	*C-Pkg	*C-Pkg	*C-Pkg	*C-Pkg	*C-Pkg
Swing Out Or Fold Down TV Shelf	N/A	N/A	Opt	Std	Std	Std	Std	Std
BATHROOM	80W	89WS	90W	811SL	96DB	106UDB	116ULT	117DBL
Flush Toilet	Std	Std	Std	Std	Std	Std	Std	Std
One Piece Moulded Fiberglass Shower	N/A	Std	Std	Std	Std	Std	Std	Std
Medicine Cabinet with Mirror	N/A	Std	Std	Std	Std	Std	Std	Std
Power Ventilation Fan In Roof Vent	*C-Pkg	*C-Pkg	*C-Pkg	Std	Std	Std	Std	Std

KITCHEN	80W	89WS	90W	811SL	96DB	106UDB	116ULT	117DBL
Stainless Steel 3 Burner Cook Top	Std	Std	Std	N/A	N/A	N/A	N/A	N/A
Stainless Steel Cook Top w/17" Oven	Opt 2	Opt	Opt	Std	Std	Std	Std	Std
Stove Top Cover(with range/oven only)	Opt	Opt	Opt	Opt	Opt	Opt	Opt	Opt
Flip Up Counter Extension	N/A	N/A	N/A	Opt	Opt	Opt	N/A	Opt
Double Sink	N/A	Std	Std	Std	Std	Std	Std	Std
Food Safe Sink Lids	N/A	N/A	*C-Pkg	*C-Pkg	*C-Pkg	*C-Pkg	*C-Pkg	*C-Pkg
RV Microwave Oven	N/A	Opt	Opt	Opt	Opt	Opt	Opt	Opt
Fridge-cu.ft. (Optional sizes)	4	C-Pkg-6	6	6	6	6	6(8/10)	6(8/10)
Fluorescent Light Over Kitchen Area	Opt	Opt	Opt	Opt	Opt	Opt	Opt	Opt
WATER SYSTEM	80W	89WS	90W	811SL	96DB	106UDB	116ULT	117DBL
LP Water Heater Pilot model ‡	Opt 2	Std	Std	N/A	N/A	N/A	N/A	N/A
Direct Start Ignition Water Heater ‡	Opt 2	*C-Pkg	*C-Pkg	Std	Std	Std	Std	Std
D.S.I. LP/110V Water Heater ‡	N/A	N/A	N/A	Opt	Opt	Opt	Opt	Opt
Outside Shower	Opt 1	*C-Pkg	*C-Pkg	*C-Pkg	*C-Pkg	*C-Pkg	*C-Pkg	*C-Pkg
Black Water Tank Flush System	N/A	N/A	*C-Pkg	*C-Pkg	*C-Pkg	*C-Pkg	*C-Pkg	*C-Pkg
Multifunction Monitor Control Centre	N/A	*C-Pkg	*C-Pkg	Std	Std	Std	Std	Std
ELECTRICAL SYSTEM	80W	89WS	90W	811SL	96DB	106UDB	116ULT	117DBL
Converter (Amps) w/Battery Charger	25	25	25	30	30	30	45	45
30 Amp Service Power Cord	N/A	*C-Pkg	Std	Std	Std	Std	Std	Std
Interior Battery Box for 1 Battery	Std	Std	Std	N/A	N/A	N/A	N/A	N/A
Ext. Battery Box for 2 Batteries	N/A	N/A	Opt	Std	Std	Std	Std	Std
PROPANE & HEATING SYSTEM	80W	89WS	90W	811SL	96DB	106UDB	116ULT	117DBL
Dual LP Tanks-lbs./tank (Opt. sizes)	20	20	20	20	20(30)	20(30)	20(30)	20(30)
Auto Change-out Regulator	*C-Pkg	*C-Pkg	*C-Pkg	*C-Pkg	*C-Pkg	*C-Pkg	*C-Pkg	*C-Pkg
Fire Ext., Smoke, LP & CO Detectors	Std	Std	Std	Std	Std	Std	Std	Std
D.S.I. Furnace (BTU's X 1000)	12	*C-Pkg-16	12	25	25	25	31	31
BBQ Connection (Low Pressure)	Opt	Opt	Opt	Opt	Opt	Opt	Opt	Opt
Barbeque (Low Pressure)	Opt	Opt	Opt	Opt	Opt	Opt	Opt	Opt
CONVENIENCE PACKAGE (C-Pkg.)	80W	89WS	90W	811SL	96DB	106UDB	116ULT	117DBL
C-Pkg. Weights per Model (lbs./kg.)	16/7.3	79.7/36.2	43/19.6	87.3/39.7	87.3/39.7	96.3/43.7	108.3/49.2	108.3/49.2

TABLE LEGEND

- ‡ 6 gallon tank with bypass
- Opt. 1 Requires Optional Water Heater
- Opt. 2 Water Heater N/A with Oven
- *C-Pkg: Item Included in West Coast Convenience Package

Red Text=New for 2007

Actual weights and specifications may vary and are subject to change without notice.



All Okanagan Campers meet or exceed CSA and RVIA standards.



West Coast Leisure Home's Transferable 5-year Structural Warranty (the first in Canada) backs up our commitment to our customers and belief in our product.

WEIGHTS OF AVAILABLE OPTIONS (LBS./KGS.)

7' Rear Awning	23/10.4	Skylight in Bathroom	6/2.7	Fluorescent Light Over Kitchen Area	1.8/0.8
Side Awning	30/13.6	Electric Fireplace	27/12.2	Propane Water Heater (6 gal. Pilot model)	21/9.5
Slide Out Awning Topper - Each	35/15.9	Roof Air Conditioner	97/44	Direct Start Ignition Water Heater (6 gal)	18/8.2
Thermal Sealed Windows - Avg. Per Window	11/5.0	TV Antenna w/ Booster	6/2.7	DSI LP/110V Electric Water Heater (6 gal)	18/8.2
Electric "HappyJacs" With Remote Control	22/10	Satellite Dish/TV Antenna w/ Booster	23/10.4	Outside Shower	3/1.4
Dual Wheel Swing Out Camper Jack Brackets	21/9.5	Solar Panel Prewire	3/1.4	Exterior Access Battery Box for 2 Batteries	12/5.4
Aluminum Bumper c/w Fold Down Step	43/19.5	Oak Magazine And Spice Racks	5/2.3	30 lbs. Propane Tank Upgrade	20/9
Step-N-Stow Bumper w/Fold-Down Step	61/27.7	Fantastic Fan In Bedroom	7/3.2	BBQ Quick Connect Valve	1/5
2.5KW Onan LP Generator w/ Remote Switch	125/58	Swing Out Or Fold Down TV Shelf	12/5.5	Barbeque	20/9.1
Generator Ready	48/21.8	Stainless Steel 3 Burner Range w/ 17" Oven	40/18.2	Fold-down Bunk	42/19
Roof Rack And Ladder	9.5/4.3	Stove Top Cover	5/2.3	Note: Weights listed are approximate and may vary on different models. Some weights may be the exchange difference weight between items.	
15" LCD TV/DVD Player w/Swing Arm Mount	20/9.1	Flip Up Counter Extension	3/1.4		
Skylight c/w Solar Reflective Pleated Shade	8/3.6	RV Microwave Oven	27/12.2		

At **West Coast Leisure Homes** we pride ourselves in making the strongest, lightest and best built camper on the market for over 35 years. We still have staff that have been here almost since the beginning. We do not mass produce, allowing strict quality control

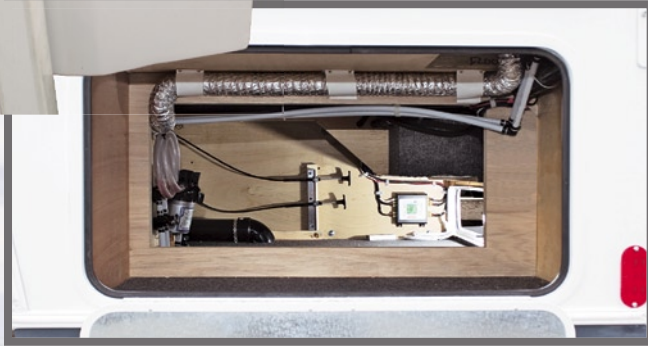
and a dedication and pride for the product that we build. Many of our floor plans and options for our campers are due to customer's wants, needs and their own ingenuity. Your input makes our product **YOUR** product.

ABOUT THIS PRODUCT GUIDE
All information contained in this brochure is based on West Coast Leisure Homes Ltd.'s latest production information. As we continually upgrade and improve our product, we reserve the right to make any changes to specifications and design or available models without notice or obligation. Pictures in this brochure may show optional equipment, or items used for photographic purposes only. Due to inconsistencies in the colour printing process, actual colours of the finished product may vary from this brochure.

Contact your Okanagan Dealer for more information or visit:

www.okanaganrv.com

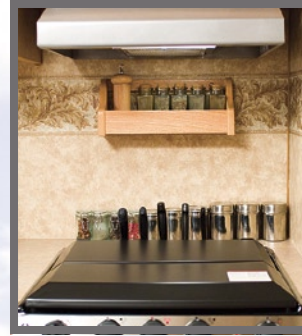
STORAGE GALORE! The brilliant Step-n-Stow bumper. 2500 watt generator in dedicated compartment. Large, heated basement storage.



Kitchen features include optional microwave with matte finish, knife and spice racks, and large pull out pantry.



U-shaped dinette converts to an additional bed with 2 large storage drawers under.



The 15-inch 12V LDC/DVD player with flexible wall mount provides optimum viewing in both the living area and bedroom. The optional air conditioner provides summertime comfort. A solid oak magazine rack keeps your space tidy and convenient.

Talk about cozy! The optional electric fireplace on the 116ULT makes cool nights warmer... and more romantic!



This Skylight with Solar Reflective Pleated Shade is standard on some models.

YOUR OKANAGAN CAMPER DEALER:



WEST COAST LEISURE HOMES LIMITED

316 Dawson Avenue, Penticton, B. C., CANADA V2A 3N6

Tel: (250)493-1535 Fax: (250)492-6110

www.okanaganrv.com

PRINTED IN CANADA



116ULT

Photographed at Banbury Green RV Park, Penticton, B.C.

Stuart Bish Photography/Design