

08 SIGHTSEER





 SMARTSPACE™
WEB

SEE IT AND BELIEVE IT.

People can't take their eyes off the all-new look of the 2008 Winnebago Sightseer®. For some, it's the refreshing exterior styling. Others are taken in by the curved cabinetry and the available UltraLeather™ package. And because there are five models to choose from, there's a Sightseer for everyone. Choose between carpet and optional vinyl in the lounge area, and add upgrades like

rope accent lighting and a decorative range backsplash to make the Sightseer your own. With SmartSpace™ features making the most of the available interior space, you know you're getting the most value for your money. See and be seen this year in a Sightseer by Winnebago®.

CLASS A COMFORT

Start every adventure with a home-cooked meal from a galley that is loaded with everything. A three-burner range top and a microwave oven come standard. The upgrade package includes a range cover, the exclusive Titanium Touch™ stainless refrigerator insert for a fingerprint resistant surface with the look of stainless steel, and wire storage baskets under the dinette seats.

Give the living area an extra touch of class with an UltraLeather upgrade on the Stitchcraft furniture and high-back cab seats that swivel and recline for your comfort. You'll enjoy the 19" LCD TV and movies from the DVD player on the dash radio. Guests will appreciate the available sofa/sleeper with the extra-comfortable air mattress and automatic pump that tuck away when not in use (30B, 34M, 35J).

Adjust the level of privacy at your discretion when you select the available day/night pleated shades. Greater climate control is provided by available features such as dual-glazed, thermo-insulated windows and a heat pump that takes the chill off without starting the furnace. Choose between plush carpeting and available, easy-to-clean vinyl floorcovering in the lounge area.

WEB Select a Key Feature

The **WEB** icon designates a Winnebago Industries Key Feature. For further in-depth information and photos, use the Drop-down Menu or click on the 'Key Features' page at winnebagoind.com.



INTERIOR UPGRADES Select the Interior Upgrade Package for rope accent lighting, a range backsplash, range cover, Titanium Touch stainless refrigerator insert, sink covers, throw pillows and dinette seat storage baskets.



WEB ONEPLACE
This complete systems center places frequently used switches, gauges and controls in one convenient location.



WEB TRUELEVEL Eliminate tank-level guesswork with our exclusive TrueLevel™ holding tank monitoring system. It incorporates detector cells that determine liquid levels from outside the tank. No probes means no more corrosion, just accurate readings, time after time.



TV The TV runs on 12-volt power so you can watch it without shoreline hookups, a generator or even an inverter.



BEDROOM The 35J features a king-size bed, overhead cabinets, a chest of drawers and a large wardrobe.



DASH RADIO The dash radio includes AM/FM stereo, MP3 input and a CD/DVD player with remote that connects to the TV so you can watch your favorite movies. A front jack lets you connect your video camera for instant entertainment.



FULL-EXTENSION DRAWER SLIDES
Drawers are sized to maximize storage, hold tight with positive latches and open fully for easy access to stored items.



BUNK BEDS The 35J also features bunk beds with an available DVD player for each bunk.

CLASS A CONTROL

Feel at ease behind the wheel with switches, gauges and controls at your fingertips. Large exterior mirrors and the available rearview monitor provide added peace of mind when backing and maneuvering. Choose the available side-view camera system for even more confidence. It is activated by the turn signals and displays images on the rearview monitor.

Once you've settled on a site, use our exclusive 3-Position Controls for the hydraulic jacks leveling system to quickly level your Sightseer from any of the three locations. An included hitch⁶ lets you tow up to 5,000 pounds and comes with a seven-pin connector. Connecting and disconnecting hoses at the campsite is refreshingly simple when you use the QuickPort[®] service connection hatch. It allows the compartment door to close even with hookups connected.

Store oversized items with ease in a large rear storage compartment that you can access from the rear or right sidewall in the 30B.



DASH Smartly positioned controls make driving easy.



CAB SEATS Available UltraLeather cab seats slide, swivel and recline for all-day comfort.



SIDE CAMERAS Have added confidence backing and turning when using the available side-view camera system.



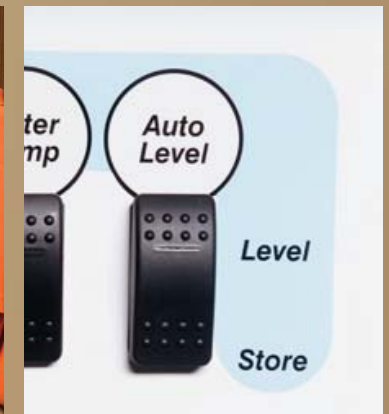
EXTERIOR SERVICE CENTER Connections and controls use color-coded labels for easy identification. The QuickPort service connection hatch is fast and simple, allowing the bay door to close while hookups are attached. The available wash station is great for quick cleanups, while heated holding tanks and a winterization valve let you extend the camping season.



WEB STOREMORE No more crawling on your hands and knees, thanks to our exclusive slideout system that allows exterior compartments to extend with the slideroom for easy storage access.

WEB 3 position controls

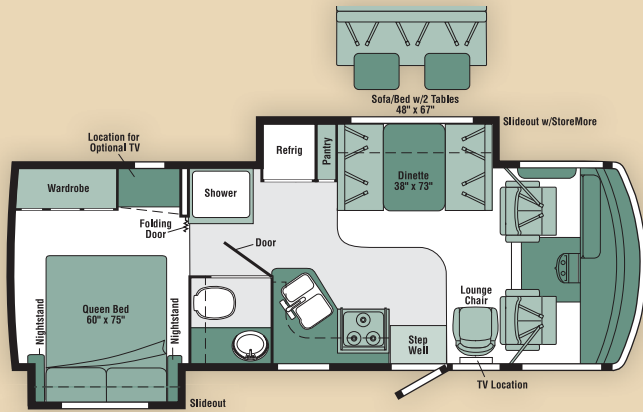
Raise and lower the hydraulic jacks from any of three convenient locations. Do the job from the driver's seat or step outside and use the controls at the entrance door or service center to monitor the jacks as you lower them. No hassle. No guesswork. Just a level coach at your convenience.



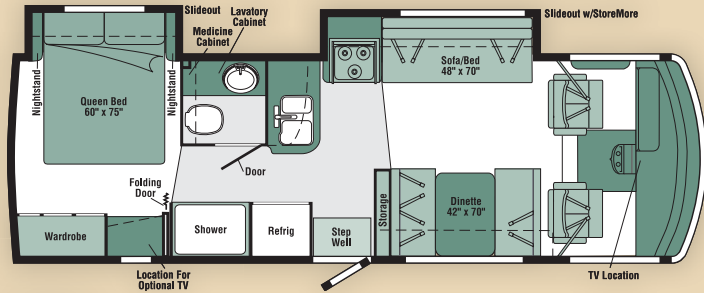
08 SIGHTSEER FLOORPLANS

Carpet
 Vinyl Floorcovering
 Seat Belts

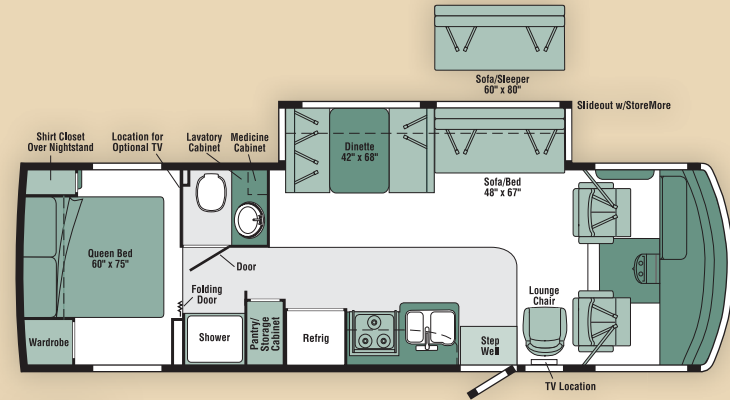
Note: Dimensions shown are for sleeping space only and may vary due to styling differences. Dashed lines denote overhead storage areas.



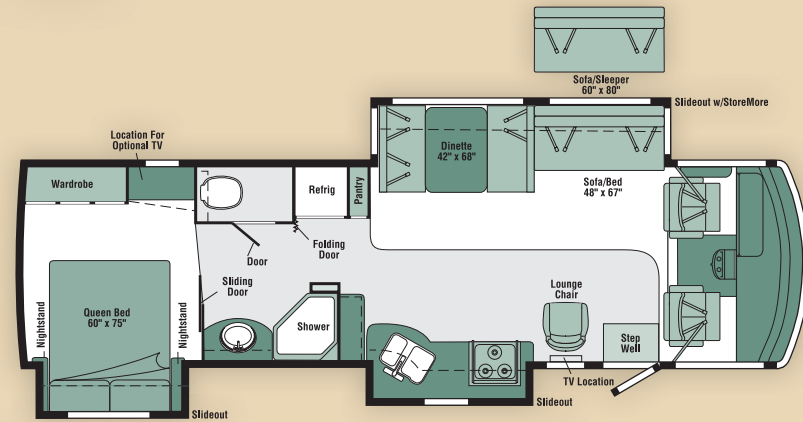
26P



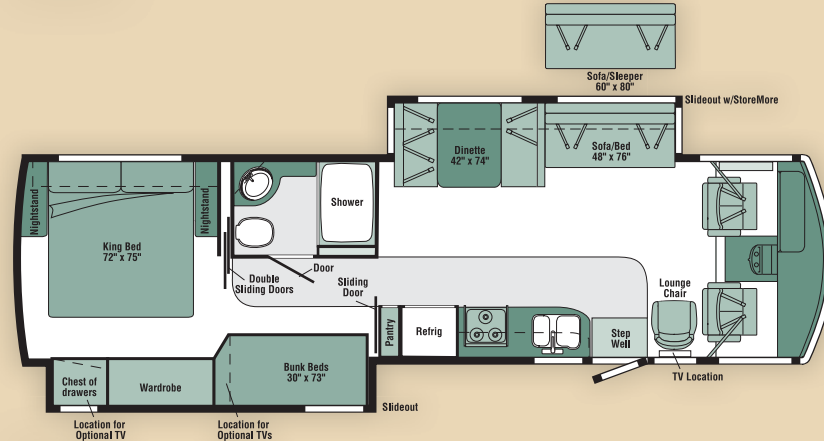
29R



30B



34M



35J

08 SIGHTSEER SPECIFICATIONS

WEIGHTS & MEASURES	26P	29R	30B	34M	35J
Length	26'11"	29'9"	30'1"	34'7"	35'3"
Exterior Height¹	12'1"	12'3"	12'3"	12'3"	12'3"
Exterior Width²	8'5.5"	8'5.5"	8'5.5"	8'5.5"	8'5.5"
Exterior Storage³ (cu. ft.)	67.3	81.2	126.2	98.9	101.8
Awning Length	11'6"	16'	16'	18'	13'
Interior Height	6'8"	6'8"	6'8"	6'8"	6'8"
Interior Width	8'0.5"	8'0.5"	8'0.5"	8'0.5"	8'0.5"
Freshwater Capacity w/Heater⁴ (gal.)	67	75	62	72	75
Holding Tank Capacity - Black/Gray⁴ (gal.)	39 / 36	37 / 41	41 / 57	41 / 57	44 / 48
LP Capacity⁶ (gal.)	18	18	18	18	18
Fuel Capacity (gal.)	60	75	75	75	75
GCWR⁶ (lbs.)	22,000 B	26,000 A / 22,000 B	26,000 A / 22,000 B	26,000 A / 26,000 C	26,000 A / 26,000 C
GVWR (lbs.)	16,000 B	18,000 A / 18,000 B	18,000 A / 18,000 B	20,500 A / 21,200 C	20,500 A / 21,200 C
GAWR - Front (lbs.)	6,500 B	7,000 A / 7,000 B	7,000 A / 7,000 B	7,500 A / 8,000 C	7,500 A / 8,000 C
GAWR - Rear (lbs.)	10,500 B	11,000 A / 12,000 B	11,000 A / 12,000 B	13,500 A / 13,500 C	13,500 A / 13,500 C
Wheelbase	159"	190"	190"	228"	228"

AUTOMOTIVE/CHASSIS	26P	29R	30B	34M	35J
A Ford® Chassis – 6.8L SOHC Triton® V10 362-hp, TorqShift™ 5-speed automatic overdrive transmission, hydraulic brakes, 4-wheel ABS, 130-amp. alternator, Wheel Liners stainless steel	S	S	S	S	S
B Workhorse™ Chassis – W-Series 8.1L Vortec V8 340-hp, 4L85-E 4-speed overdrive transmission, hydraulic brakes, 4-wheel ABS, 145-amp. alternator, Wheels stylized aluminum, Wheel Liners stainless steel (26P)	S	0	0		
C Workhorse Chassis – W-Series 8.1L Vortec V8 340-hp, Allison® 6-speed overdrive transmission, hydraulic brakes, 4-wheel ABS, 145-amp. alternator, Wheels stylized aluminum				0	0
Trailer Hitch⁶ 5,000-lb. drawbar/500 lbs. maximum vertical tongue weight & wiring w/7-pin connector	S	S	S	S	S
Leveling Jacks hydraulic, automatic controls w/remote, 3-position controls	0	0	0	0	0

CAB AREA & DRIVER CONVENIENCES	26P	29R	30B	34M	35J
Beverage Holder passenger side, Cab Seats (Fabric) armrests, lumbar support (fixed), multiadjustable slide/recline & swivel, Convenience Tray w/cupholders, Cruise Control , Map Lights , Map Pocket , Powerpoint 12-Volt DC/Cigarette Lighter , Receptacle AC duplex, Steering Wheel tilt w/power-assist, Trim Panel driver side w/cupholder, storage tray, Window (driver & passenger) partial slider w/screen, Windshield Wipers intermittent, pantograph arms	S	S	S	S	S

CAB AREA & DRIVER CONVENIENCES	26P	29R	30B	34M	35J
Cab Seats UltraLeather™, Defroster Fans (2) auxiliary 2-speed w/instrument panel switch, Monitor System rearview b/w w/single camera & 1-way audio, Audiovox® Video Camera System side-mounted cameras	0	0	0	0	0

ENTERTAINMENT	26P	29R	30B	34M	35J
Radio (Cab) AM/FM stereo/CD/DVD/MP3, speakers (4), alarm clock, remote, input jack, Jensen™ C.B. Wire Prep , Radio Antenna roof-mounted, rubber, Radio Power Switch main/auxiliary battery, Satellite System Ready , TV DC 19" LCD color stereo w/remote, TV Enhancement Package antenna (amplified), 12-volt DC powerpoints, interior jacks, exterior jack, coax wiring, cable input, splitter, shelf (NA 30B)	S	S	S	S	S
Entertainment Center (Exterior) w/CD player, DC receptacle, AC duplex receptacle, AM/FM radio, radio antenna, speakers (2), lockable compartment, removable TV table, Satellite Dish Antenna RV digital, manual, remote control extender	0	0	0	0	0
DVD w/8.5" LCD Screen (2) bunk area, headphones, remotes & AV ports					0
TV 14" color DC w/remote (bedroom)			0		
TV 19" color AC w/remote (bedroom)	0	0	0	0	0

	26P	29R	30B	34M	35J
Blinds mini (lounge, dinette & galley), Ceiling fabric, Countertops laminate w/radius edge, Curtain wraparound w/track (front), Lights reading, adjustable halogen (overheads), Lights ceiling, incandescent w/wall switches, Roof Vent nonpowered (lounge), powered (bath), Shades pleated (bedroom), Telephone Input interior jack (bedroom or dinette area)	S	S	S	S	S
Wainscoting w/Chair Rail	S		S	S	S
Floorcovering vinyl, front to bedroom, Interior Upgrade Package range backsplash, Titanium Touch™ stainless refrigerator door insert, dinette storage wire baskets, rope accent lighting, range cover, sink covers (2), throw pillow(s), Roof Vent powered, ventilator fan, lounge, Shades day/night pleated (lounge, dinette & bedroom), UltraLeather Upgrade Package cab seats, sofa, lounge chair, Windows dual-glazed/thermo-insulated/flush-mounted	0	0	0	0	0

FURNITURE	26P	29R	30B	34M	35J
Dinette w/access to storage below, cupholders	S	S	S	S	S
Lounge Chair pedestal, swivel/slide	S		S	S	S
Sofa w/storage below, tables (2), shelves behind sofa (2)	0				
Sofa(s) w/storage below, throw pillow, shelves (NA 29R)		S	S	S	S
Sofa/Sleeper air mattress, throw pillow, shelf			0	0	0

GALLEY	26P	29R	30B	34M	35J
Countertop w/flip-up extension (NA 34M), Faucet single-control, Moen® Microwave Oven , Pantry , Range Hood vented w/light & fan, Range Top 3-burner w/storage below, Receptacles duplex, Refrigerator/Freezer double-door	S	S	S	S	S
Microwave/Convection Oven , Range 3-burner w/oven	O	O	O	O	O

BATH	26P	29R	30B	34M	35J
Cabinets lavatory, medicine, Faucet (Lavatory) dual-control, Faucet (Shower) dual-control w/flexible showerhead, Light shower, Shower Door textured glass, Shower Skylight	S	S	S	S	S

BEDROOM	26P	29R	30B	34M	35J
Bedsprad pillow shams, pillows, throw pillow, Lights decorative wall lamps (NA 35J)	S	S	S	S	S
Bed queen, Serta® innerspring w/underbed storage	S	S		S	
Bed queen, Serta innerspring, Headboard			S		
Bed king, innerspring w/underbed storage					S
Bunk Beds w/drawer below, privacy curtain, mattress cover, pillows & shams, storage pockets, shelves					S

EXTERIOR	26P	29R	30B	34M	35J
Awning Rails w/rain gutters, Door entrance w/separate screen door, deadbolt lock, Entrance Door Steps double, electric w/doorjamb switch, Light porch w/interior switch, Fuel-Fill Door , Mirrors manual adjust w/convex, Mudflaps front, Receptacle AC duplex (passenger side storage compartment w/QuickPort®), Sidewall Skin 1-piece smooth fiberglass, Storage Compartments valance panels, gas strut, single-paddle latch, lights, trunk liner, TriMark® KeyOne™ System	S	S	S	S	S
Awning patio, Ladder , Mirrors electric/remote w/defrost, Sidewall Skin premium high-gloss Vetrolite®	O	O	O	O	O

SYSTEMS	26P	29R	30B	34M	35J
HEATING & A/C – Automotive Heater/Air Conditioner blend air system	S	S	S	S	S
Air Conditioner (Roof) 14,800 BTU, ceiling-ducted w/wall thermostat, Furnace 30,000 BTU, low-profile, ducted, in-floor, Generator 4,000-watt, Cummins Onan® MicroQuiet™ gas		S	S		
Air Conditioners (2) (Roof) high-efficiency/ceiling-ducted w/wall thermostat, includes PowerLine® energy management system, Furnace 40,000 BTU, low-profile, ducted, in-floor, Generator 5,500-watt, Cummins Onan Marquis Gold™ gas				S	S
Air Conditioner w/Heat Pump (Roof) 14,800 BTU, ceiling-ducted w/wall thermostat	O	O	O		
Air Conditioner w/Heat Pump (2) (Roof) high-efficiency/ceiling-ducted w/wall thermostat, includes PowerLine® energy management system				O	O
ELECTRICAL – Auxiliary Start Circuit, Batteries (2) (Coach) Group 24 deep-cycle, Battery (Coach) Disconnect System , Dual Battery charge control (automatic), Electrical Distribution System AC breakers, DC fuses, 45-amp. converter/charger (26P, 29R & 30B only), AC & DC breaker panels, 45 amp. converter/charger (34M & 35J), Generator Prep Kit , OnePlace® Systems Center wall-mounted, energy management display (34M & 35J), battery condition gauge, generator hourmeter gauge, generator start/stop switch, heating & A/C thermostat, holding tank levels, LP tank level, water heater lights, water heater switch, water pump switch, water tank level, Power Cord 30-amp.	S	S	S	S	S
PLUMBING – Service Center city water hookup/tank diverter fill, drainage valves, QuickPort® service connection hatch, cable TV input, power cord, portable satellite hookup, 10' sewer hose, telephone input, Tank holding, heated compartment, Tank LP, permanent mount w/gauge, TrueLevel™ Holding Tank Monitoring System , Water Heater 6-gallon, electronic ignition, LP gas, Water Pump demand, Water System Winterization Package water heater bypass valve, siphon tube	S	S	S	S	S
Wash Station exterior w/pump switch located in service center, Water Heater 6-gallon, electronic ignition/110 VAC/LP w/motoraid & auxiliary auto heater, includes energy management system on 26P, 29R & 30B	O	O	O	O	O

SAFETY	26P	29R	30B	34M	35J
Assist Handle exterior, Assist Bar interior, Bumpers front & rear, Child Seat Tether Anchor , Detectors/Alarms LP leak, smoke, carbon monoxide, Fire Extinguisher 10 BC, Ground Fault Interrupter , Brakelamp high-mount, Seat Belts cab, 3-point, Seat Belts lap (in selected areas), Slideroom Master Lock Switch key activated, Window escape, Windshield laminated safety glass	S	S	S	S	S

WARRANTY ⁷	26P	29R	30B	34M	35J
12-month/15,000-mile basic warranty , ⁸ 36-month/36,000-mile limited warranty on structure , ⁸ 10-year limited parts & labor warranty on roof skin ⁸	S	S	S	S	S

- The height of each model is measured to the top of the tallest standard feature and is based on the curb weight of a typically equipped unit. The actual height of your vehicle may vary by several inches depending on chassis or equipment variations. Please contact your dealer for further information.
 - Sightseer floorplans feature a wide-body design - over 96" In making your purchase decision, you should be aware that some states restrict access on some or all state roads to 96" in body width. Before making your purchase decision, you should confirm the road usage laws in the states of interest to you.
 - The load capacity of your motor home is designated by weight, not by volume, so you cannot necessarily use all available space when loading your motor home.
 - Capacities are based on measurements prior to tank installation. Slight capacity variations can result due to installation applications.
 - Capacities shown are tank manufacturer's listed water capacity (W.C.). Actual filled LP capacity is 80% of listing due to overfilling prevention device on tank.
 - Actual towing capacity is dependent on your particular loading and towing circumstances which includes the GVWR, GAWR, and GCWR as well as adequate trailer brakes. Please refer to the Operator's Manual of your vehicle for further towing information.
 - See separate chassis warranty details.
 - See your dealer for complete warranty information.
- NA Not Available
S Standard
O Optional

Not all items available in combination. See dealer for details.

Winnebago Industries® continuing program of product improvement makes specifications, equipment, model availability, and prices subject to change without notice. Comparisons to other motor homes are based on the most recent information available at printing.

INTERIOR DECOR

Choose from three fabric selections and two cabinet wood choices.



2-TONE
SOFA

MAIN	ULTRA-LEATHER	BEDSPREAD	
		ACCENT	CARPET
		ACCENT	



Linen Moss w/available Timber UltraLeather™



Sesame Seed w/available Timber UltraLeather



Tuscan Sun w/available Truffle UltraLeather



Washed Maple



Honey Cherry

STANDARD GRAPHICS



Medium Parchment w/Copper/Charcoal/Champagne Star



Medium Parchment w/Black/Charcoal/Champagne Star

DELUXE GRAPHICS



Bright Platinum Metallic



Metallic Gold

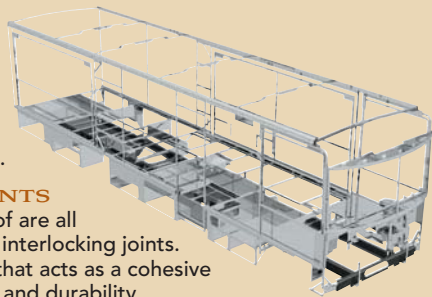


**BUILT BY WINNEBAGO INDUSTRIES.
BUILT TO LAST.**

Winnebago motor homes are built by Winnebago Industries, the company that defined motor homes. The company that built its reputation on quality construction. The company that transformed the motor home concept into a way of life.

Today, Winnebago Industries brings that reputation for quality and its 49-year history of motor home innovation to the design and construction of every motor home. It's all a part of SuperStructure[®], our exclusive system of proprietary structural components that instills each motor home with improved strength and durability.

SOLID FOUNDATION Steel and aluminum truss work provides a solid, flat foundation for the floor and sidewalls. Winnebago Industries engineers also take special care to distribute the weight of components to ensure proper handling and stability.



INTERLOCKING JOINTS
The floor, sidewalls and roof are all integrally connected using interlocking joints. This creates a coach body that acts as a cohesive unit for improved strength and durability.



E-COATING Winnebago Industries employs an exclusive 12-stage automotive-style dip tank process to apply an advanced electrodeposition coating on critical steel components for superior corrosion protection.



THERMO-PANEL[®] SIDEWALLS Invented by Winnebago Industries, Thermo-Panel construction combines a fiberglass panel, high-density, block-foam insulation and aluminum support structures to create some of the most durable, lightweight sidewalls in the industry.

ATTENTION TO DETAIL Whether it's sending every coach through a high-pressure water tunnel to check for leaks or labeling each individual wire and bar-coding parts to save time and frustration during service, Winnebago Industries considers every detail to ensure your Winnebago motor home provides you with years of pleasure.

STRONG AS STEEL Appliances are secured directly to embedded steel plates for added safety. Windshields are also mounted in steel with an automotive-style sealant; lesser designs use a rubber gasket to mount the windshield in fiberglass.



1-year-old Winnebago fiberglass roof



1-year-old competitor's rubber roof

FIBERGLASS ROOF The Sightseer features a crowned, one-piece fiberglass roof, backed with a 10-year limited parts-and-labor roof skin warranty. Fiberglass offers superior strength, attractiveness and durability over the rubber roofs found on many competitive models which can chalk, streak and degrade over time. Fiberglass also provides increased puncture and tear resistance.



TAKE A TOUR We're proud of our process, state-of-the-art facilities and the people who make Winnebago Industries number one. We invite you to visit our factory in Forest City, Iowa, for a first-hand look at the dedication and technology behind every motor home we build.



RECOGNIZED QUALITY The Recreation Vehicle Dealer Association annually rates RV manufacturers and awards the Quality Circle award to manufacturers who provide exceptional products, service and support. Winnebago Industries is proud to be the only manufacturer to receive this award every year since its inception.



COMMITTED TO SERVICE We back our motor homes with the industry's best service after the sale.

- 12-month/15,000-mile basic limited warranty
- 36-month/36,000-mile warranty on structure
- Standard 10-year limited parts-and-labor roof skin warranty
- Complimentary 24-hour roadside assistance program
 - RV Technical Assistance Hotline
 - RV Service Appointment Assistance
 - Emergency Trip Interruption
 - Emergency Message Service
 - Nationwide Trip Routing
 - Fee-Free Travelers Cheques
- TripSaver Fast Track Parts. TripSaver guarantees that in-stock warranty parts ship directly to your dealer within 24 hours.
- National dealer service network



WIT CLUB Winnebago owners are like family. Joining the Winnebago-Itasca Travelers is a great way to meet and travel with other Winnebago enthusiasts.

- Members enjoy:
- Caravans and rallies
 - Local and state group activities
 - RV travel benefits



WINNEBAGOIND.COM
Visit us on the web for more info on all of our motor homes, the latest product updates and a host of web-exclusive content.

For Sales and Service Information Contact:



NYSE listing: WGO