

1 9 9 2



Coachmen[®]

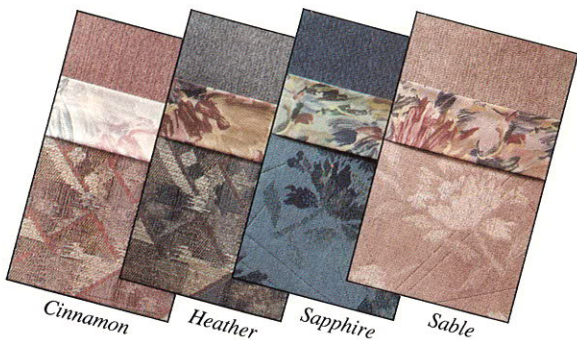
Class C Motorhomes



Value for the long haul.

Catalina Sport

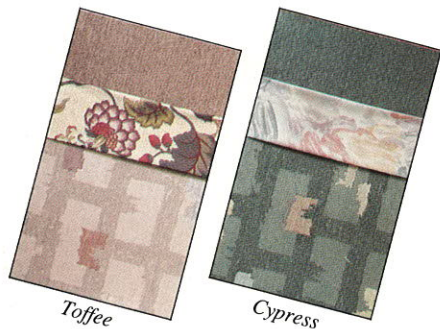
Living up to its name, the Sport features peppy good looks at prices that inspire enthusiasm. Though economical, the Sport uniquely offers fully-laminated construction, including the roof, floor and all walls. Choose from two rugged upholstery colors, or three optional velvet selections.



Above interior shown in Cordovan

Leprechaun

A legendary name in Class C motorhomes, the Leprechaun boasts unsurpassed quality at a surprisingly affordable price. Elegant exterior styling, radius windows and fully-laminated aluminum frame construction, complement interior livability and your choice of three plush velvet decors.



Above interior shown in Blue Mist

Royal Leprechaun

As its name suggests, the Royal Leprechaun features regal enhancements of its leprechaun cousin. The exterior styling is beautifully complemented by easy-care aerodynamic molded front and rear fiberglass caps. And, the interior appointments are fit for royalty as you customize your coach with three sculptured velvet selections and two wood grain choices.



Above interior shown in Teal

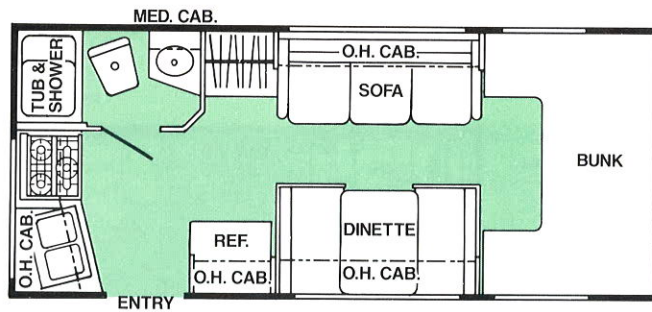
CLASS C FLOOR PLANS AND TECHNICAL SPECIFICATIONS

*When it comes to space utilization, Coachmen has no equal.
That's because designing for livability is one of our
first and foremost concerns. Whether studying our floorplans or comparing
our specifications to the competition, you'll find that
you get more for your money when you choose Coachmen.*

195RK

REAR KITCHEN

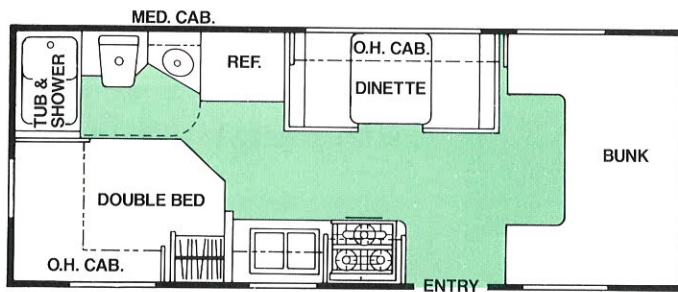
Catalina Sport



200CB

CORNER BATH

Catalina Sport

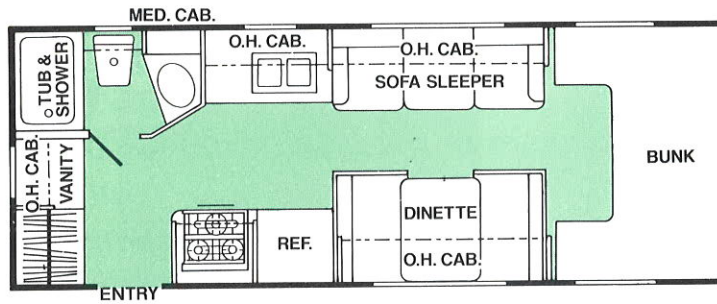


COACHMEN CLASS C MOTORHOMES

220CB

CORNER BATH

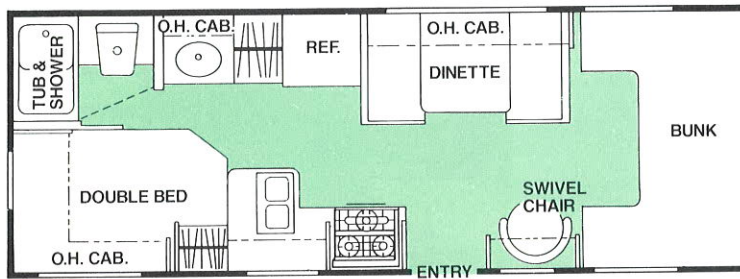
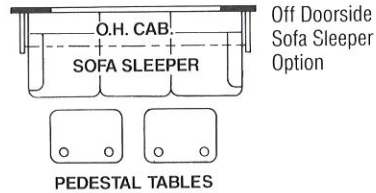
Catalina Sport



240CB

CORNER BATH

Leprechaun



Cooking Utensil Drawer

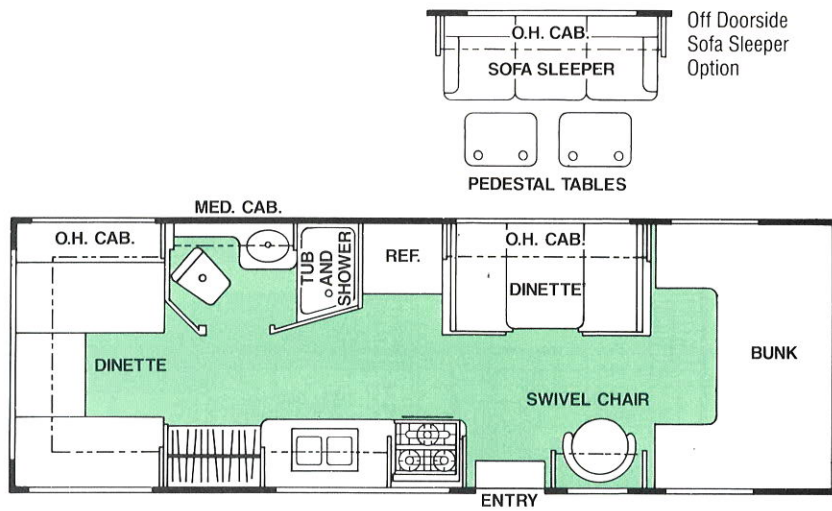
Our enormous cooking utensil drawer is another Coachmen original! Underneath our full-sized, self-edged sink, you'll find a place where (finally) you can easily and conveniently store cooking utensils and silverware. It's also great for those hard-to-store kitchen supplies like wax paper and aluminum foil!

COACHMEN CLASS C MOTORHOMES

248DD

DOUBLE DINETTE

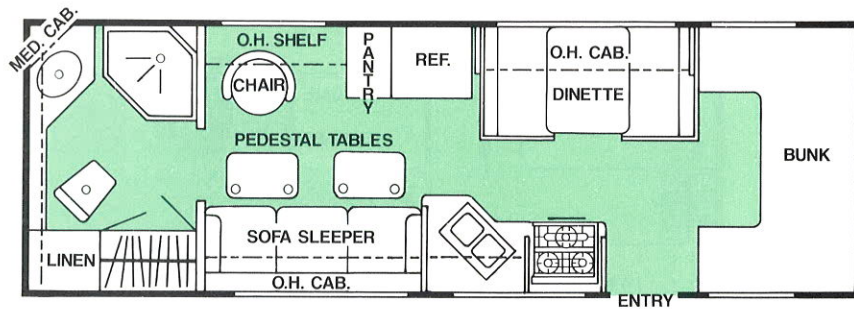
Leprechaun



255RB

REAR BATH

Leprechaun



High Output Range

For years, the traditional four-burner range has been an aggravation, because the burners were too low powered to heat anything quickly. To add further insult, the four burners were so closely spaced that four pots or pans couldn't even fit on them at the same time.

We are delighted to offer, as a standard feature, a new high-output gas range from Magic Chef that answers your needs. This newly improved design has two rear burners with a 5,200 BTU output, and the front burner has a powerful output of 7,100 BTU's. In layman's terms, the new high-output burner will heat four cups of water 28.6% faster than before.

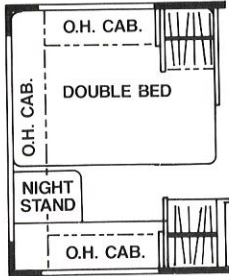
From now on, boiling water for spaghetti will be a pleasure!

COACHMEN CLASS C MOTORHOMES

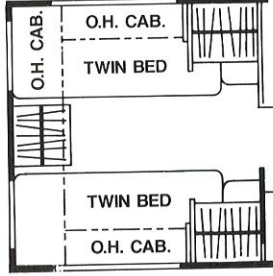
265RF

RAISED FLOOR

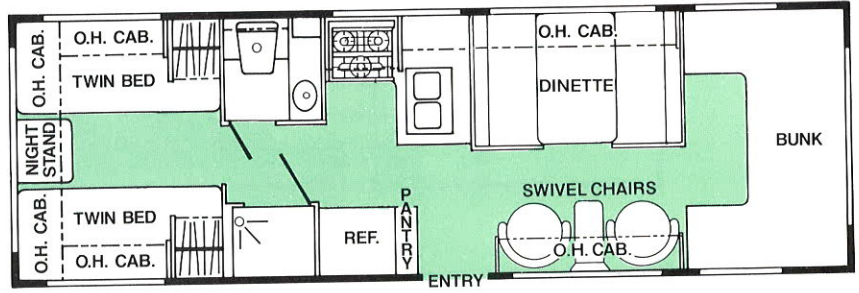
Leprechaun & Royal Leprechaun



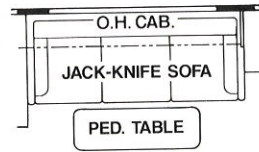
Rear Double Bed Option



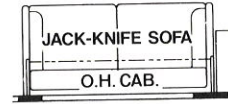
Rear Twin Beds Option



Jack Knife Sofa Option



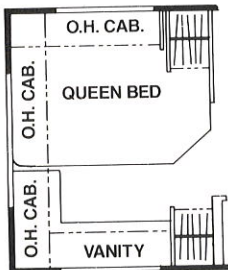
Jack Knife Sofa Option



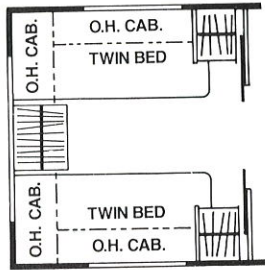
268WB

WALK THRU BATH

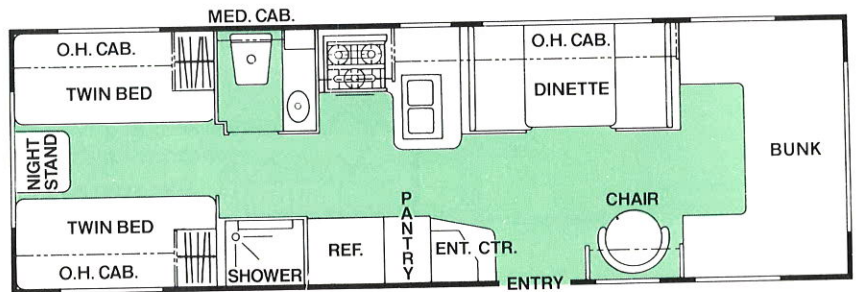
Catalina Sport



Rear Double Bed Option



Rear Twin Beds Option w/Wardrobe



Royal Leprechaun Rear Cap

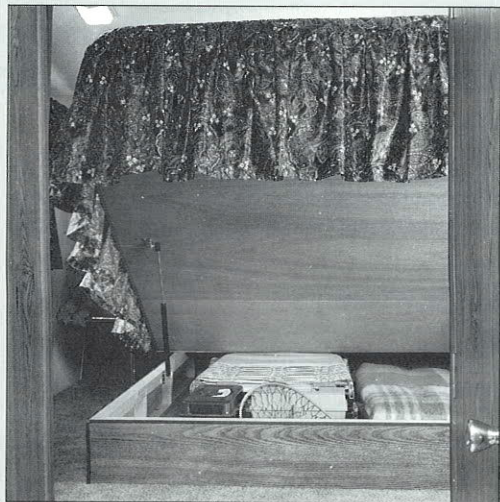
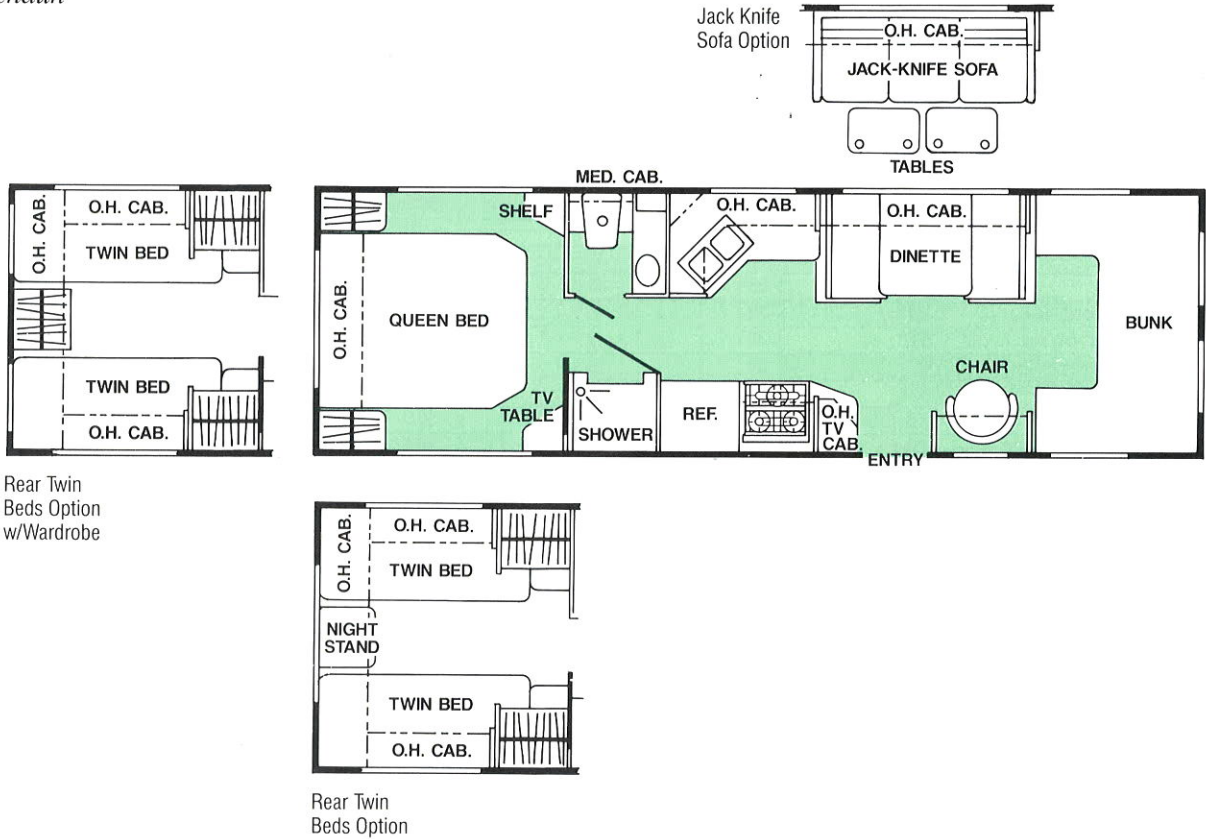
The Royal Leprechaun proudly features a new molded rear fiberglass cap for 1992. To complement the sleek front cap, the aft section is designed to enhance the aerodynamics as air flows over the contoured corners. In addition to the elegant styling, you will enjoy the easy maintenance and extra insulating properties for many years to come.

COACHMEN CLASS C MOTORHOMES

270RF

RAISED FLOOR

Leprechaun &
Royal Leprechaun



Bed Lift System

Of course Coachmen has storage under our beds. Even better, most models are equipped with a powerful bed lift system, that puts easy access at your fingertips. We laminate our bed bases for extra strength, then secure to each side a factory pre-charged gas strut. Your back and shoulder muscles will dearly love the two 100# struts on our queen beds, which literally whisper as the bed floats open.

COACHMEN CLASS C MOTORHOMES

Catalina Sport Class C						Royal Leprechaun Class C	
	195 RK Sport	200 CB Sport	220 CB Sport	220 CB† Sport	268 WB† Sport	265 RF†	270 RF†
Exterior length	246"	249"	272"	279"	325"	325"	337"
Exterior clearance height	120"	120"	120"	120"	120"	120"	120"
Interior width	89½"	89½"	89½"	89½"	89½"	89½"	89½"
Interior height	82½"	82½"	82½"	82½"	82½"	78"	78"
GVWR	10,200	10,200	11,100	11,500	12,400	12,400	12,400
Base weight	7,196	7,293	7,775	8,176	9,425	9,530	9,739
Carrying capacity	2,806	2,709	3,127	3,084	2,759	2,654	2,445
Sleeping capacity std.	6	6	6	6	6	6	6
Chassis model number	G30	G30	G30	E350	E350	E350	E350
Engine size (cu. in.)	350	350	350	460	460	460	460
Wheelbase	125"	125"	146"	158"	176"	176"	188"
Rear axle ratio	4.10	4.10	4.10	4.10	4.10	4.10	4.10
Fuel capacity (gal.)	33	33	33	36	36	36	36
Alternator amps	63	63	63	60	60	60	60
Fresh water tank capacity (gal.)	26	36	25	25	40	36	36
Waste water tank capacity (gal.)	27	39	39	39	39	33	33
Gray water tank capacity (gal.)	27	39	39	39	39	33	33
Water heater capacity (gal.)	6	6	6	6	6	6	6
L.P. gas capacity (lb.)	50	50	50	50	85	85	85
Furnace rating (x 1,000 BTU) std.	20	20	24	30	24	24	24
Tire size	○	○	○	●	●	●	●

NOTES: All specifications are approximate. †Ford Chassis NA=Not available at time of printing ○=LT225/75R16D ●=LT215/85Rx16D

Leprechaun Class C							
	240 CB	240 CB†	248 DD	248 DD†	255 RB†	265 RF†	270 RF†
Exterior length	276"	284"	300"	284"	319"	325"	337"
Exterior clearance height	120"	120"	120"	120"	120"	120"	120"
Interior width	89½"	89½"	89½"	89½"	89½"	89½"	89½"
Interior height	82½"	82½"	82½"	82½"	78"	78"	78"
GVWR	11,100	11,500	11,100	11,500	12,400	12,400	12,400
Base weight	7,728	8,308	8,253	8,799	9,022	9,484	9,449
Carrying capacity	3,069	2,950	2,649	2,485	3,138	2,700	2,738
Sleeping capacity std.	6	6	6	6	6	6	6
Chassis model number	G30	E350	G30	E350	E350	E350	E350
Engine size (cu. in.)	350	460	350	460	460	460	460
Wheelbase	146"	158"	146"	158"	176"	176"	188"
Rear axle ratio	4.10	4.10	4.10	4.10	4.10	4.10	4.10
Fuel capacity (gal.)	33	36	33	36	36	36	36
Alternator amps	63	60	63	60	60	60	60
Fresh water tank capacity (gal.)	25	25	32	32	NA	36	36
Waste water tank capacity (gal.)	27	27	39	39	NA	33	33
Gray water tank capacity (gal.)	27	27	39	39	NA	33	33
Water heater capacity (gal.)	6	6	6	6	6	6	6
L.P. gas capacity (lb.)	85	85	85	85	85	85	85
Furnace rating (x 1,000 BTU) std.	24	24	24	24	24	24	24
Tire size	□	○	□	●	●	●	●

NOTES: All specifications are approximate. †Ford Chassis NA=Not available at time of printing □=LT225/75R16D ○=LT215/85Rx16D ●=LT215/85Rx16D

Options¹

Deluxe velvet decor, executive dinette, jack knife sofa, privacy drape, remote pilot seats, lounge chair, front cabover entertainment center, designer pillow package, bake 'n broil microwave oven, larger flush mount double door refrigerator, range top cover, deluxe AM/FM w/cassette, deluxe AM/FM w/disc player, TV antenna & rotor package, cable TV & phone jack, 9" color TV, 13" color TV, VCR video recorder, twin beds, corner double bed, emergency start switch, 2.8 kw generator, 4.0 kw generator, battery disconnect, bedroom radius jalousie windows, tinted glass radius jalousie windows, larger electronic ignition furnace, 3-speed ventilator fan, large roof air conditioner, deluxe cab upfit, rear auxiliary heater,

air assisted suspension, towing hitch, 6 gallon electronic ignition water heater, custom floor mats, fiberglass running boards, luggage rack & ladder, stainless steel wheel inserts, power entrance step, outside entertainment center, exterior table, docking lights.

¹Not all options are available on all models.

Consult your Coachmen dealer for details.

Some optional equipment shown above is available in option packages on the Sport and some options are standard on the Leprechaun & Royal Leprechaun.

COACHMEN CLASS C MOTORHOMES

Items	Model	Catalina Sport				Leprechaun			Royal Leprechaun		
		195 RK Sport	200 CB Sport	220 CB Sport	268 MB Sport	240 CB	248 DD	255 RB	265 RF	270 RF	265 RF
Interior & Decor											
Valances		•	•	•	•	•	•	•	•	•	•
Wooden Drawers with Travel Lock		•	•	•	•	•	•	•	•	•	•
Padded Door Overhead		•	•	•	•	•	•	•	•	•	•
LP Leak Alarm		•	•	•	•	•	•	•	•	•	•
Solid Wood Picture Frame Cabinet Doors		•	•	•	•	•	•	•	•	•	•
Decorator Glass						•	•	•	•	•	•
Easy Care Linoleum						•	•	•	•	•	•
Partial Carpet with Padding						•	•	•	•	•	•
Full Carpet w/Pad		•	•	•	•						
5" Thick Tufted Cushions		•	•	•	•	•	•	•	•	•	•
Executive Lounge Table								•		•	
Reclining Pilot Seats		•	•	•	•	•	•	•	•	•	•
Reclining Swivel Passenger Seats				•						•	•
Galley											
3-Burner High Output Almond Range with Oven		•	•	•	•	•	•	•	•	•	•
Black Glass Oven Door										•	•
Lighted Range Hood		•	•	•	•	•	•	•	•	•	•
Large Stainless Steel Sink		•	•	•	•	•	•	•			
Large Porcelain Kitchen Sink										•	•
Sprayer on Kitchen Sink										•	•
Single Lever Kitchen Faucet										•	•
Cutting Board Sink Cover						•	•	•	•	•	•
Silverware Drawer		•	•	•	•	•	•	•	•	•	•
Smoke Detector		•	•	•	•	•	•	•	•	•	•
Microwave Ready				•	•	•	•	•	•	•	•
Flush Mounted Refrigerator		•	•	•	•	•	•	•	•	•	•
Electrical											
110/12V Power Center 32 Amp. w/Charger		•	•	•	•						
110/12V Power Center 45 Amp. w/Charger				•		•	•	•	•	•	•
Patio Light		•	•	•	•	•	•	•	•	•	•
Automatic Wardrobe Light										•	•
Trunk Light								•	•	•	•
Battery Disconnect										•	•
30 Ft. Power Cord in Locking Compartment		•	•	•	•	•	•	•	•	•	•
Ground Fault Interrupter Circuit		•	•	•	•	•	•	•	•	•	•
Generator Prep				•						•	•
Bath & Water System											
Hand Lever Toilet		•	•	•	•	•	•	•	•		
Double Pedal Toilet										•	•
One Piece Tub Surround										•	•
Fast Recovery Water Heater		•	•	•		•	•	•	•	•	•
Electronic Ignition Water Heater				•						•	•
Wall Switch in Bathroom		•	•	•	•	•	•	•	•	•	•
Sleeping											
Rear Queen Bed									•		•
Rear Twin Beds				•				•		•	
Rear Corner Bed			•		•						
Side Jack-Knife Sofa		•		•		•					
Privacy Drape Bedroom			•	•	•	•	•	•	•	•	•
Privacy Drape Cab-Over				•						•	•

Standard features found in Catalina Sport, Leprechaun & Royal Leprechaun

Wall mounted thermostats
Smooth wooden drawers with travel lock
Residential quality cabinet fronts
Durable laminated counter top
Wire and frame for roof air conditioning
Composite taillight
12-volt demand pump
Freeze resistant plumbing
Slide-out step
Awning rail
Colonial white exterior
Screen door
T-bar door restraint
All copper double flared LP gas lines

The Coachmen recreational vehicles described in this brochure incorporate components produced by Coachmen Industries, its divisions, and various other suppliers. During the product year, it may become necessary to produce Coachmen products with different components than initially scheduled. All such changes are approved for use by Coachmen in order to maintain the quality standards associated with the Coachmen name. All illustrations and specifications contained in this catalog are based on the latest product information at time of publication. Coachmen reserves the right to make changes in prices, colors, materials, equipment, and specifications and to discontinue models at any time without notice. Coachmen assumes no responsibility for any error in type or print reproduction of specifications in this brochure. Check with your Coachmen dealer for more information if you have specific questions.

GET THE MOST FOR YOUR MONEY. CHOOSE COACHMEN.

PRODUCT PERFORMANCE

(Continued from page 11)

sound barrier, plus it is easier to maintain.

Under the rubber outer skin, we use tapered rafters for strength and water drainage. The Leprechaun and Royal Leprechaun feature a tapered aluminum rafter system, which reduces weight with added strength.

A good foundation is especially important, and we are proud of ours. We borrowed engineering principles long-proven in aircraft design, where strength and weight are both critical issues. Like landing gear, we put high density steel in our frame and foundation. For lighter weight strength, we utilize aluminum structural ribbing in our fully-laminated walls and roofs.

Unlike many other brands, our floors are also fully-laminated and insulated with Polystyrene, which is one of the densest insulations available. This gives you a stronger foundation and very necessary protection against loss of heat. Even our basement models feature an insulated floor, which helps to protect all storage compartments, plumbing and appliances from the cold. Finally, all of our models are finished with automotive undercoating, for protection against road salt, grime, and rust.

Appliances are also important to product performance. Coachmen uses only name brand appliances, which means both reliability and availability of warranty and replacement parts in the future. And, we take extra steps to ensure that the appliance performs satisfactorily.

For example, we line all of our refrigera-

tor compartments with fiberglass insulation. As simple as this seems, we have found that this improves its' cooling effectiveness, particularly in warmer temperatures.

DESIGNED FOR DURABILITY

Durability means fewer problems, less maintenance and a better trade-in value. We take extra care in this area.



The performance of the motorized aspect of your coach is very important to your long-term satisfaction. Even though

Coachmen does not design or manufacture the chassis, we know there are things we can do to assist its performance.

Weight is the most important consideration. Every chassis and engine is designed to handle a specified amount of total weight, which includes the coach portion of your unit, you and your passengers, your cargo, fluids and towing capacity. Overweight conditions will hinder the performance of your vehicle. Because of this, Coachmen will not design and market a product that is overweight or allows you no cargo capacity. Unlike others, our products are designed to be realistically used, within reasonable

guidelines. Instead of pushing weight limitations, we will use a heavier and more expensive chassis. The initial cost difference is always offset by your long-term satisfaction.

Weight distribution is also an important factor in motorized performance. We carefully analyze and design our products for balanced distribution, which involves placement of all appliances, holding tanks and even storage compartments.

These careful design considerations are achieved through knowledge gained during our 27 years of experience in the RV industry. This expertise is enhanced by computerized technology and testing. Performance

criteria are analyzed for major components and select models are tested at an independent proving ground for strength, durability and road handling characteristics. In addition, we maintain a pool of

demonstration vehicles for use and testing by our employees. Through testing and use, we verify the engineering, assembly techniques and quality materials selected for Coachmen products.

These are just a few of the reasons why Coachmen gives you the most for your money.

In addition to these design elements, please see page 10 for a description of our Coachmen Caravan Club and Buck-Stopper Warranty.

We and your dealer welcome the opportunity to tell you more about the wonderful value of products by Coachmen Recreational Vehicle Company.

Your Coachmen Dealer is:



JERRY'S TRAILERS & CAMPERS
2601 S. 13th St.
Norfolk, NE 68701

