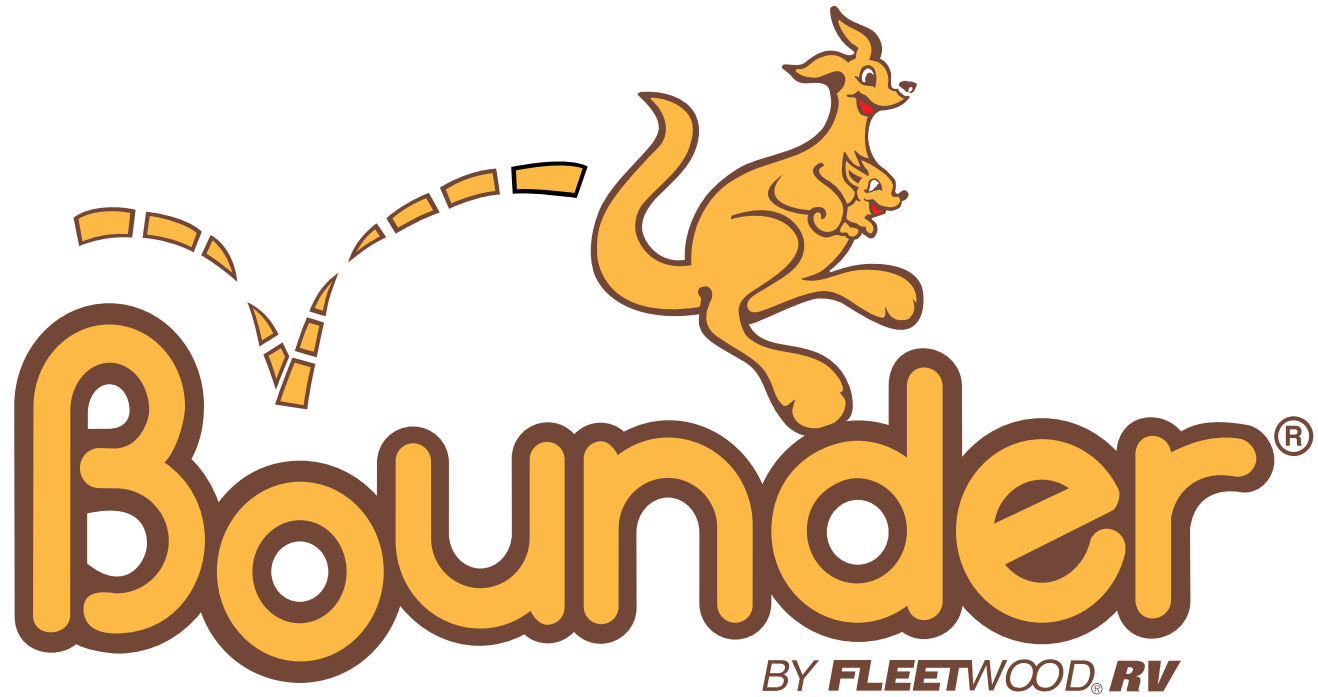


FLEETWOOD.RV



T

HE MOTOR HOME THAT REALLY WORKS.

At Fleetwood RV, we've been making America's favorite recreational vehicles for nearly 50 years. We've done it by building honest value, rugged dependability and peace of mind into every one of them. Which is probably why Bounder is the best-selling motor home in North America. Bounder not only has a proud heritage of quality craftsmanship, but also a long tradition of innovation. It's built for people who know exactly what they expect from their RV. The inviting spaciousness of every Bounder interior makes it feel more like a family home than an RV. And you've probably heard from friends how perfect it is for entertaining when you're traveling or camping with fellow Bounder enthusiasts. By balancing comfort, function and convenience, Bounder always makes sense. Some floor plans feature our EZ Glide™ Room Slide-out System which effortlessly makes your RV even roomier. Our new EZ Store™ Storage System moves with the slide-out room, so you have easy access to the storage area below, even when the slide-out room is extended. Practical amenities include brand-name appliances, maximized storage space, stylish furnishings and functional touches throughout the coach. In the end, they're all good reasons why there's a good chance Bounder will be number one with your family this year.

1999 BOUNDER SPECIFICATIONS

Chevrolet Chassis	28T	30E	32H	34J	34V	36S
Engine CID	454	454	N/A	454	454	454
Wheel Base	178"	190"	N/A	208/247"	208/247"	208/247"
GVWR lbs ¹	16,500	16,500	N/A	16,500	20,000	20,000
GCWR lbs ²	20,000	20,000	N/A	20,000	21,000	21,000
GAWR lbs (front) lbs ³	5,500	5,500	N/A	5,500	5,500	5,500
GAWR lbs (rear) lbs ³ (incl. tag)	11,000	11,000	N/A	11,000	14,500	14,500
Hitch Rating/Tongue wt. lbs	3,500/250	3,500/250	N/A	3,500/250	3,500/250	3,500/250
Fuel Capacity (gal/lbs)	75/450	75/450	N/A	75/450	75/450	75/450

Ford Chassis	28T	30E	32H	34J	34V	36S
Engine CID	415	415	415	415	415	415
Wheel Base	178"	190"	208"	208"	208"	228"
GVWR lbs ¹	18,000	18,000	20,500	20,500	20,500	20,500
GCWR lbs ²	21,500	21,500	24,000	24,000	24,000	24,000
GAWR lbs (front) lbs ³	7,000	7,000	7,000	7,000	7,000	7,000
GAWR lbs (rear) lbs ³	11,000	11,000	13,500	13,500	13,500	13,500
Hitch Rating/Tongue wt. lbs	3,500/250	3,500/250	3,500/250	3,500/250	3,500/250	3,500/250
Fuel Capacity (gal/lbs)	75/450	75/450	75/450	75/450	75/450	75/450

Dimensions	28T	30E	32H	34J	34V	36S
Length	28' 10"	30' 10"	32' 10"	34' 10"	34' 10"	36' 10"
Height (w/roof A/C)	11' 8"	11' 8"	11' 8"	11' 8"	11' 8"	11' 8"
Width	102"	102"	102"	102"	102"	102"
Interior Height	79"	79"	79"	79"	79"	79"
Interior Width	96"	96"	96"	96"	96"	96"

Liquid Capacities (gallons)	28T	30E	32H	34J	34V	36S
Fresh Water	100	100	100	100	100	100
Water Heater	6	6	6	6	6	6
Black Water Holding	50	50	50	50	50	50
Grey Water Holding	50	50	50	50	50	50
Appliance LPG Tank*	25	25	25	25	25	25
Furnace-BTUs	34m	34m	34m	42m	42m	34/20m

¹ GVWR (Gross Vehicle Weight Rating): Maximum permissible weight of this motor home. The GVWR is equal to or greater than the sum of the unloaded vehicle weight plus the net carrying capacity.

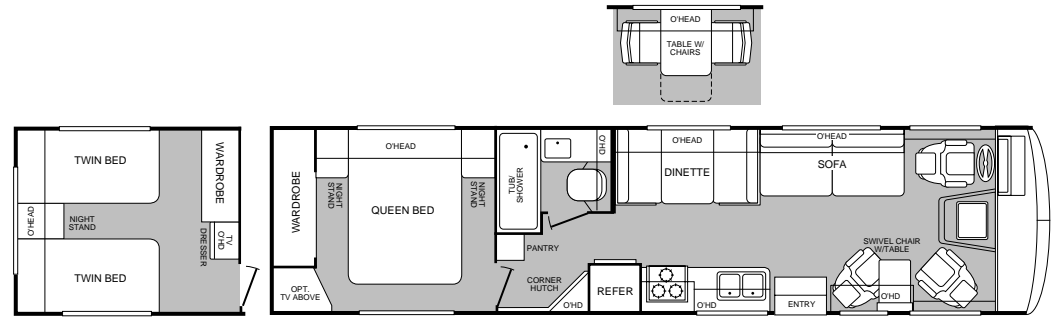
² GCWR (Gross Combination Weight Rating): Value specified by the motor home manufacturer as the maximum allowable loaded weight of this motor home with its towed trailer or towed vehicle.

³ GAWR (Gross Axle Weight Rating): Maximum permissible loaded weight a specific axle is designed to carry.

*Tank manufacturer's listed water capacity (WC) actual filled. LP capacity is 80% of listing due to safety shut off required on tank.

MODEL
34J

- Island queen bed
- Fully enclosed bathroom
- Extra large tub/shower
- Swivel chair w/table
- Opt'l table w/chairs



MODEL
34V

- Living room slide-out
- 3 bedroom configurations
- Sofa bed and dinette
- Fully enclosed bathroom
- Opt'l side-by-side refrigerator



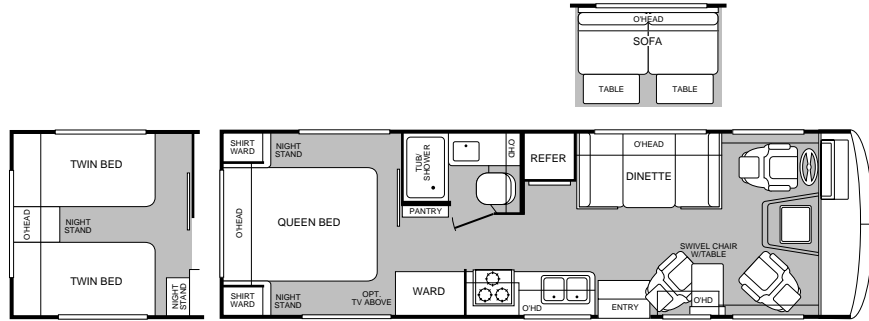
MODEL
36S

- Living room slide-out
- 3 bedroom configurations
- Swivel chair w/table
- Private toilet
- Opt'l side-by-side refrigerator



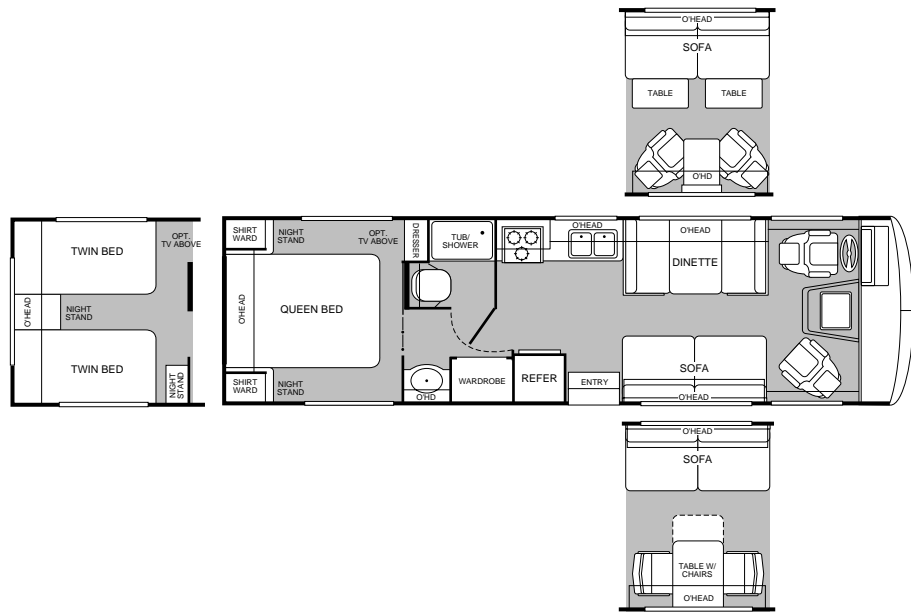
MODEL
28T

- Island queen bed
- Dinette w/opt'l sofa
- Fully enclosed bathroom
- Swivel chair w/table
- Opt'l twin beds



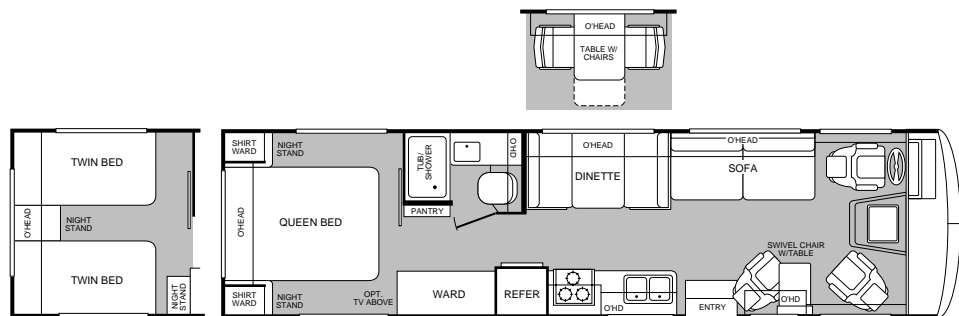
MODEL
30E

- Island queen bed
- Split bathroom
- Large wardrobe
- Opt'l sofa w/swivel chairs
- Opt'l twin beds



MODEL
32H

- Island queen bed
- Fully enclosed bathroom
- Swivel chair w/table
- Large wardrobe
- Opt'l twin beds



1999 BOUNDER FEATURES AND AVAILABLE EQUIPMENT

Exterior Automotive and Electrical, *Standard Equipment*

Underhood Utility Light	Large Curved Aerodynamic Windshield	Valve Extenders
Large Single Headlamps w/Turn Signal	Steel Surface Firewall	Remote Heated Rearview Mirrors
Undercoating	Windshield Wipers w/Wet Arm	Rear Camera Ready
Trailer Hitch w/4-point Electrical Hook-up		

Interior Automotive, *Standard Equipment*

Intermittent Wiper Control	Multi-position Sun Visors	Engine Cover Conv. Tray
Battery Disconnect	Cruise Control	Low Profile Engine Cover
Auxiliary Start Circuit	Auto A/C/Heater Combo	Radio Switch-Main/Aux.
Soft Surface Automotive Dash	Tilt Steering Wheel	Tilt-up Instrument Panel
Reclining Captains Chairs	Radio w/Cassette/MX Electronic Tuner	

<i>Automotive, Options</i>	28T	30E	32H	34J	34V	36S
4-point Hydraulic Levelers	Opt	Opt	Opt	Opt	Std	Std

Exterior, *Standard Equipment*

Roto-cast Front Quarter Panels	Dual Pane Slider Windows	Full Fiberglass Front Cap
Roto-cast Rear Wheel Well Trims	One-piece Swingdown Engine Access Door	
Radius Door Entry w/Deadbolt Latch	Aerodynamic Bus Styling	Roof Ladder
Pass-through Storage	Utility Compartment	20' Sewer Hose
Awning Rail/Drip Molding (both sides)	Exterior Assist Handle	Power Entry Step
Spare Tire	Park Cable Receptacle	Lower Body Accent Paint
Dual Battery Charge Control	Single Paddle/Metal Latches (luggage)	Porch Light
2 Colorway Graphics to Match Decor	Hidden Lift Strut Supports (luggage)	Insulated Luggage Doors
Continuous One-piece Bulb Seal	Steel Seal Frames (luggage)	Lights in Compartments
Carpeted Luggage Compartments	Hidden Stainless Steel Latch Rods	Stainless Steel Wheel Simulators
Aluminum Front Grill	Polyethylene Luggage Compartment Boxes	

<i>Exterior, Options</i>	28T	30E	32H	34J	34V	36S
Awning	Opt	Opt	Opt	Opt	Opt	Opt
Satellite Dish	Opt	Opt	Opt	Opt	Opt	Opt
Rear Vision Camera	Opt	Opt	Opt	Opt	Opt	Opt
Dual High Efficiency Roof A/C	Opt	Opt	Opt	Opt	Opt	Opt
Climate Control w/Solar Panel	Opt	Opt	Opt	Opt	Opt	Opt

Safety Equipment, *Standard Equipment*

Smoke Detector	Carbon Monoxide Detector	LPG Detector
Fire Extinguisher	Emergency Exit Window	Spare Tire
Alarm Buzzer (Slide-outs only)		

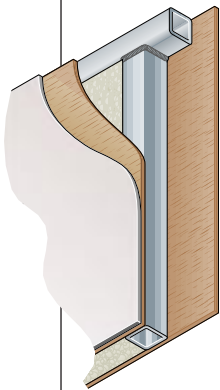
Interior, *Standard Equipment*

2 Interior Decors	Velvet Feature Fabrics	Skylight In Tub/Shower
Large Double Stainless Steel Sink	Wall-to-wall Nylon Carpet	Wood Drawers
Vinyl Floor Covering	Radius Corner Cabinetry	3-point Front Seat Belts
Brass-finished Cabinet Hardware	Roller Guide Drawer Slides w/Transit Ship Locks	
Reclining Bucket Seats	Oak Cabinet Doors & Drawers	Miniblinds
Bedsread w/Decor Pillows	Innerspring Mattress	Residential Seat Styling
Window Coverings	Bath Door/Trims	Solid Divider Doors
Bright Brass Bath Accessories	Entry Rail (oak & brass)	Sink Cutting Board
Adjustable Cabinet Shelves	Carpet Pad	
Raised Panel Cabinet Doors	Molded Tub/Shower w/One-piece Enclosure	

<i>Interior, Options</i>	28T	30E	32H	34J	34V	36S
Glass Shower Door	N/A	N/A	N/A	N/A	N/A	Std
w/Bright Brass Frame						
Shower Curtain	Std	Std	Std	Std	Std	N/A
Rear TV w/Island Queen Bed	N/A	N/A	N/A	Opt	Opt	Opt
DSS Manual Lift	Opt	Opt	Opt	Opt	Opt	Opt
Rear Television w/Remote	Opt	Opt	Opt	Opt	Opt	Opt
VCR	Opt	Opt	Opt	Opt	Opt	Opt
Convertible Sofa Bed w/Tables	Opt	N/A	N/A	N/A	N/A	N/A
Lounge Chairs w/Conv. Table	N/A	Opt	N/A	N/A	N/A	N/A
Freestanding Dinette & Chairs	N/A	Opt	Opt	Opt	Opt	Opt
Twin Beds/Nightstands	Opt	Opt	Opt	Opt	Opt	Opt

WHEN THE DUST SETTLES, THERE'S NOT AN RV IN THE WORLD THAT'S TESTED LIKE A FLEETWOOD RV.

If anyone loves to tear an RV apart, it's us. Because at Fleetwood RV nothing's more important than your safety and comfort. While our improvements aren't all visible to the eye, we commit millions of dollars a year in product development and research to build what we believe are the finest RVs in the world.



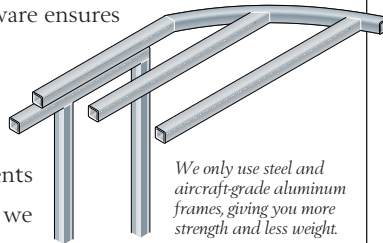
Vacubond construction ensures that every roof, wall and floor is completely sealed.

It all starts with advanced computer analysis of new prototype designs. Once built, the prototypes undergo rigorous load bearing and weight distribution stress tests. Stringent load analysis software ensures improved reliability.

Then the relentless testing and re-testing of components begins. In a couple of weeks we can simulate years of real world

use. Slide-out mechanisms have to open and shut thousands of times without a complaint. Seat belts must withstand more than three-ton stress levels without a whimper. And doors have to endure tens of thousands of slammings without losing their composure.

At the end of the day, we've thrown just about anything and everything we can at our units, just to make sure we have the best designed and most thoroughly tested RVs in the world. Then we back them with a limited 1-year/3-year warranty supported by Fleetwood RV dealers throughout the U.S. and Canada. So you have what we believe to be the best-handling, safest, most comfortable RV anywhere.



We only use steel and aircraft-grade aluminum frames, giving you more strength and less weight.

Dear Friend,

Here at Fleetwood RV, we have over 200 people working on research and development. But we get our best ideas when we hit



the road in our recreational vehicles. Talking to people like you and noticing for ourselves little ways to make RVing more comfortable, more convenient and more fun.

If I had two pieces of free advice to give a friend in the market for an RV, the first would be to get a Fleetwood RV. Not because we need to sell one more. Heck, we sell more than anyone else. But because I know we build the best product out there for the money.

Second, really think about your dealer. He has to be someone you trust for advice, service and accessories. Only the best get to be Fleetwood RV dealers in the first place. Then we work with them to continually improve customer satisfaction. That's why 9 out of 10 owners would recommend their Fleetwood RV to a friend and 9 out of 10 of them would also recommend their Fleetwood RV dealer.

I hope that helps. And I also hope I see you out there, somewhere in this beautiful world, enjoying your new Fleetwood RV while I'm out there doing the same.

John C. Crean

Chairman Emeritus and Founder
Fleetwood Enterprises, Inc.

Your local Fleetwood RV dealer is:

If your local dealer is not indicated, write to the address below, or call us toll free 24 hours a day at 1-800-444-4905. Or visit our Website at <http://www.fleetwood.com>

FLEETWOOD RV

America's Favorite Recreational Vehicles

Fleetwood Enterprises, Inc.
P.O. Box 2875, Van Nuys, CA 91404-2875

Product information and photography included in this brochure were as accurate as possible at the time of publication. Subsequent refinements may be evident in the actual product. Prices and specifications are subject to change without notice. All fuel and liquid capacities are approximate and dimensions are nominal. Fleetwood has designed its motor home brands to provide a variety of potential uses for its customers. Each unit features the optimum storage, fluid, seating and sleeping capabilities. Though the customer enjoys this potential, he/she also has the responsibility to select the proper combinations of loads without exceeding the chassis weight capacities.