

**FLEETWOOD**  
*Driven to Explore*

{Bounder}

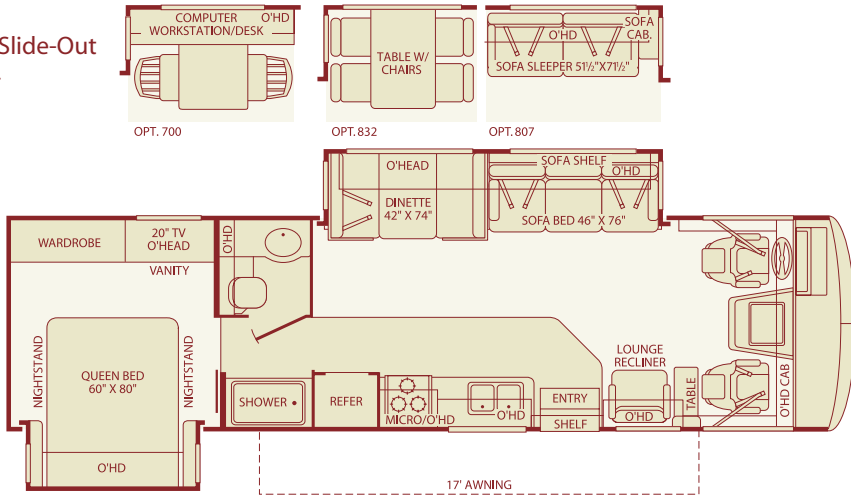
**B O U N D E R** Class A Gas 2005



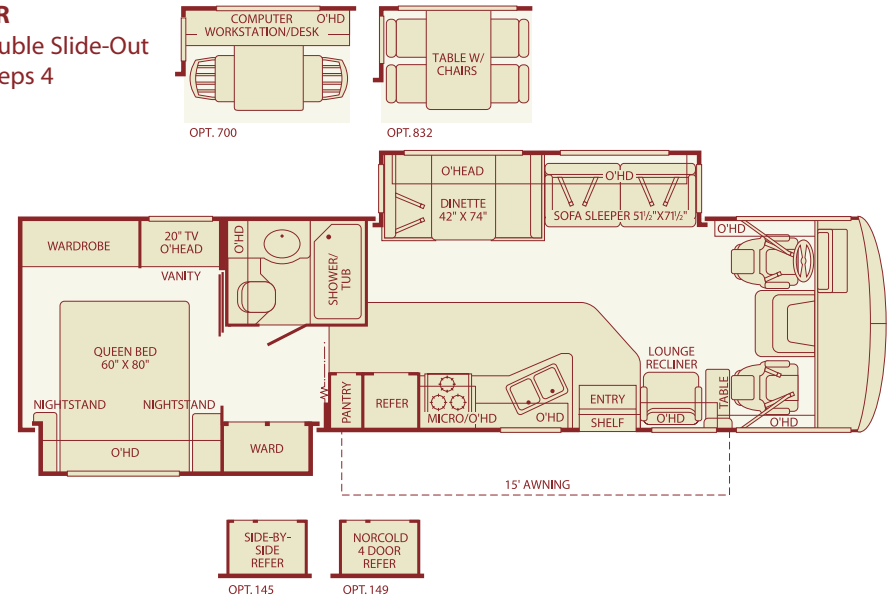
Bounder

Floor Plans

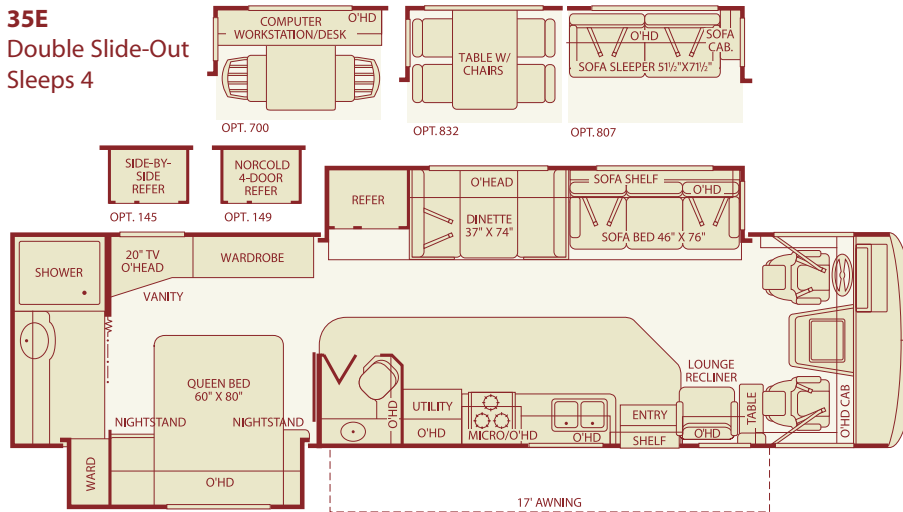
**32W**  
Double Slide-Out  
Sleeps 4



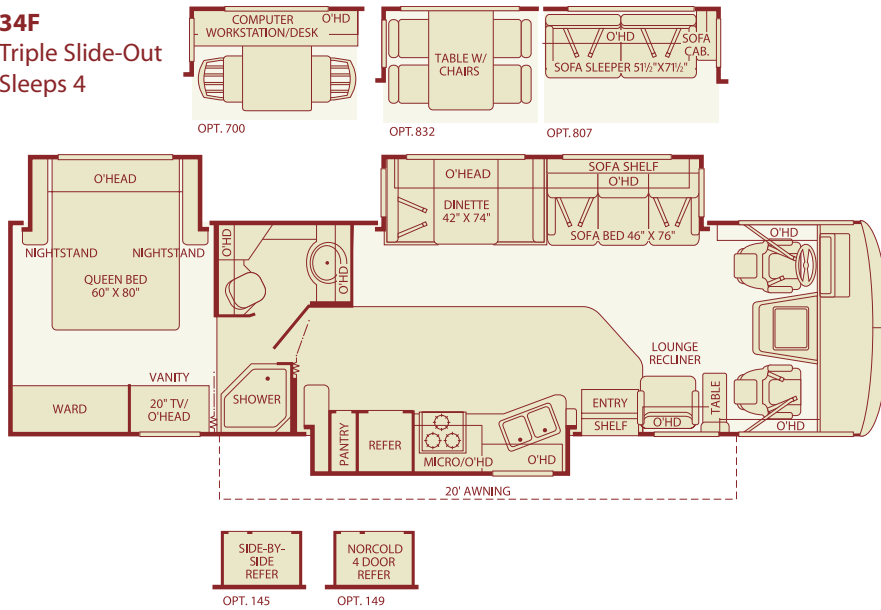
**33R**  
Double Slide-Out  
Sleeps 4



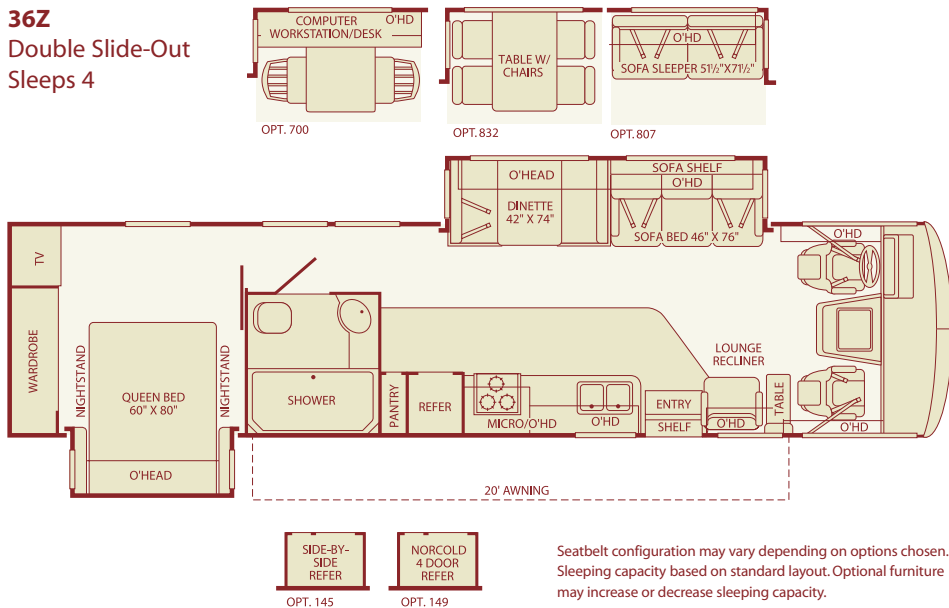
**35E**  
Double Slide-Out  
Sleeps 4



**34F**  
Triple Slide-Out  
Sleeps 4



**36Z**  
Double Slide-Out  
Sleeps 4



**Setting the Standard in Motor Home Quality.**

Fleetwood® prototypes are exposed to thousands of miles of durability testing. Those components that don't survive are redesigned until they do. This sets our standard in safety and durability.

**Fleetwood's Tuff-Ply roofing technology is one of the most durable roofing materials on the market and also resists radiation by reflecting sunlight (reduces chalking).** White roof material minimizes heat build-up, keeping the temperature cool and comfortable.

**Reliable TuffPEX® plumbing runs throughout each vehicle creating a durable seal on all internal tubing. TuffPEX® assures water flow and functions in the coldest of temperatures.** The TuffPEX® system is an industry leader in quality plumbing.

**For each outer wall, Fleetwood uses one seamless, solid piece of its exclusive Tuff-Coat® fiberglass composite. It resists UV rays, cracks and impacts.** Our products look newer longer and that's a big plus at resale time.

**To assure a strong, weather-resistant structure, Fleetwood Vacu-bonds® all sidewalls, floors and ceilings to a durable aluminum or steel frame.** The Vacu-bond® process is unmatched by many competitors.

**Fleetwood's patented Power Platform supports the body with a rigid frame that reinforces the chassis to make it even stronger.** This allows Fleetwood to offer triple slide-outs.

**Fleetwood sinks and shelves are designed to handle full-size kitchenware.** Few competitors can say the same.

Seatbelt configuration may vary depending on options chosen. Sleeping capacity based on standard layout. Optional furniture may increase or decrease sleeping capacity.

## Standard Features

### Interior

#### THROUGHOUT

- **Deluxe Ball Bearing, Full Extension Drawer Guides\***
- **Plush Wall-to-Wall Carpet w/Carpet Pad\***
- **Whole Coach Water Filtration System\***
- Telephone Jack in Dash
- 120V/12V Wire Raceways
- 34,000 BTU Furnace (30,000/20,000 BTU on 34F Only)
- Solid Divider Doors
- Water Heater Bypass System

#### DRIVER CONVENIENCE

- **AM/FM Radio w/CD Player\***
- **Double Swivel Sun Visors w/Map Pockets\***
- **DSS Manual Lift Satellite Dish\***
- **Driver/Passenger Captain's Chairs with Reclining Back/Slide Controls\***

#### LIVING ROOM

- **Front 27" Flat Screen Panasonic® Stereo TV in Overhead\***

#### GALLEY

- **Large, Double Stainless Steel Sink\***
- **8-cu. ft. Dometic® Double Door Refrigerator\***
- 3-Burner, High-Output Range w/Oven
- Light/Power Range Hood
- 1.0-cu. ft. Microwave Oven

#### BEDROOM

- **Rear 20" Flat Screen Panasonic® TV\***
- **Pillow Top Mattress\***

#### BATHROOM

- **Glass Shower Door\***
- Skylight in Tub/Shower
- Hardwood Bath Door/Trims

- 10-Gallon, Quick-Recovery Water Heater with Direct Spark Ignition (Gas/Electric)
- Wall Switches
- Dual Roof A/C High Efficiency w/Solar Panel on Front A/C
- 120V/12V AC/DC Converter
- Central Electrical Panel
- 3-Way Water Pump Switch
- Dual 6V Deep-Cycle House Batteries
- 3 Interior Decors

- Intermittent Wiper Control
- Cruise Control
- Tilt Steering Wheel
- Auxiliary Start Circuit
- Battery Shut-Off Switch
- Auto A/C Heater Combo
- Radio Switch—Main/Auxiliary Power

- Hi-Fi VCR
- Residential Seat Styling

- Single-Lever Galley Faucet w/Sprayer
- Demand Water Pump with Filter
- Fan-Tastic® Power Roof Vent
- Solid Surface Countertop
- Vinyl Flooring in Galley & Bath
- Flex-o-lator® Dinette Seating
- Trash Basket

- Wardrobe Lighting
- Night Pleated Shades
- Bedspread with Decor Pillows

- Molded Tub/Shower Enclosure
- Coordinated Bath Accessories
- Porcelain Toilet with Water Saver

- Wood Drawers
- Radius Corner Cabinetry
- Coordinated Cabinet Hardware
- Fluorescent Lighting
- Decor Lighting
- Incandescent Lighting
- TV Antenna
- Energy Management System
- Smoke Detector/Alarm
- LPG Detector/Alarm
- CO Detector/Alarm
- 10 ABC Fire Extinguisher

- Soft-Surface Automotive Dash
- Low Profile Engine Cover
- Dash Fans
- 3-Point Seat Belts on Driver/Front Passenger Seats
- Monitor Panel in Dash
- CB Radio Ready

- Entry Assist Handle
- Lounge Recliner

- Raised-Panel Cabinet Doors
- Flat Panel Base Cabinet Doors
- Large Drawers Under Dinette
- Adjustable Cabinet Shelves (Select Cabinets)
- Folding Range Cover
- Sink Cover Cutting Board

- Telephone Jack
- Restonic® Innerspring Mattress
- Rear Speakers

- Toilet Tank San-T-Flush™ System
- Fan-Tastic® Power Roof Vent

### Exterior

#### THROUGHOUT

- **Heated Water & Holding Tank Compartments\***
- Utility Compartment with Exterior Shower
- Dual Patio Receptacles
- Fiberglass Front/Rear Caps
- ABS Wheel Well Trims
- 5.5kW Onan® Generator
- 50-amp Service

#### AUTOMOTIVE

- **4-Point Automatic Electric Levelers\***
- Trailer Hitch with 7-Point Electrical Hook-Up†

#### SAFETY/CONVENIENCE

- **Rear Vision Camera\***
- **Remote Heated Rear View Mirrors\***

#### BODY STRUCTURE

- **Basement Floor Configuration\***
- **Royal Tuff-Ply Roof\***
- **Vacu-bond® Upper/Lower Floors\***

#### STORAGE

- **Polyethylene Luggage Compartment Boxes\***
- **EZ-Store Compartment on Living Area Slide-Outs\***

- Awning
- TV/12V Jack in Doorside Compartment
- Park Cable Receptacle
- Awning Rail/Drip Molding (Both Sides)
- Wheel Simulators
- Valve Extenders
- Dual Pane Windows

- Underhood Utility Light
- Large, Curved Aerodynamic Bonded in Windshield
- Steel Surface on Bulkhead

- Power Entry Step
- Porch Light
- Roof Ladder

- **Vacu-bond® Walls with Smooth High-Gloss Exterior Fiberglass\***
- Radius Roof with Ducted A/C

- Insulated Aluminum Luggage Doors with Single-Paddle/Metal Latches
- Continuous One-Piece Bulb Seal

- Dual Battery Charge Control
- 3 Colorway Graphics to Match Decor
- Large Headlamps
- Single Motor Windshield Wipers with Wet Arm
- Mud Flaps

†The chassis manufacturer recommends the installation of a supplemental brake control system to activate the brakes on the vehicle or trailer you are towing.

- Entry Door w/Deadbolt Latch
- Spare Tire

- Aluminum Interlocking Floor/Wall/Ceiling Framing

- Hidden Stainless Steel Latch Rods
- Hidden Lift Strut Supports
- Lighted Compartments
- Rotomolded Compartments

## Options

#### DRIVER CONVENIENCE

- Stereo with AM/FM/CD/Cassette
- Ultraleather Driver/Passenger Seats

#### GALLEY

- 12-cu. ft. Side-by-Side Dometic® Refrigerator w/Ice Maker (Select Models)
- Convection Microwave Oven
- 3-Burner Cook Top

- Norcold® 4-Door Refrigerator w/Ice Maker (Select Models)
- Free-Standing Dinette with Chairs

#### BEDROOM

- Torque Windows

#### THROUGHOUT (INTERIOR)

- Computer Work Station
- Washer/Dryer (Select Models)
- CSA Package

#### THROUGHOUT (EXTERIOR)

- Electric Awning

#### LIVING ROOM

- DVD/VCR Combo

## Fleetwood Exclusives

- **Vacu-Bond® Walls w/ Smooth High-Gloss Exterior Tuff-Coat® Fiberglass\***

- **Vacu-bond® Floor\***
- **Tuff-Ply UV-Resistant Heat/Cold Insulated Roofing Technology\***

- **Complete TuffPEX® Plumbing System\***
- **Power Platform\***

\* Denotes Fleetwood's Key Features

## Weights and Measurements

FORD®/ WORKHORSE™ CHASSIS	32W	33R	34F	35E	36Z
Engine Displacement (Liters)	6.8/8.1	6.8/8.1	6.8/8.1	6.8/8.1	6.8/8.1
Wheelbase (Inches)	208/208	208/208	228/228	228/228	228/228
GVWR (lbs.) <sup>1</sup>	20,500/20,700	20,500/20,700	22,000/22,000	22,000/22,000	22,000/22,000
Front GAWR (lbs.) <sup>2</sup>	7,000/7,500	7,000/7,500	7,500/8,000	7,500/8,000	7,500/8,000
Rear GAWR (lbs.) <sup>2</sup>	13,500/13,500	13,500/13,500	14,500/14,500	14,500/14,500	14,500/14,500
Base Weight (lbs.) <sup>3</sup>	16,100/16,450	16,900/17,200	17,200/17,700	17,900/18,300	17,900/18,300
GCWR (lbs.) <sup>4</sup>	25,500/25,700	25,500/25,700	26,000/26,000	26,000/26,000	26,000/26,000
Hitch Rating Weight (lbs.) <sup>*</sup>	5,000/5,000	5,000/5,000	5,000/5,000	5,000/5,000	5,000/5,000
Tongue Weight (lbs.) <sup>*</sup>	500/500	500/500	500/500	500/500	500/500
Fuel Capacity (gal.)	75/75	75/75	75/75	75/75	75/75

### DIMENSIONS AND CAPACITIES

Overall Length <sup>†</sup>	32' 10"	33' 10"	34' 4"	35' 10"	36' 10"
Overall Height (with A/C) <sup>†</sup>	12' 0"	12' 0"	12' 0"	12' 0"	12' 0"
Overall Width (maximum) <sup>6</sup>	102"	102"	102"	102"	102"
Interior Height (maximum)	79"	79"	79"	79"	79"
Interior Width (maximum)	96"	96"	96"	96"	96"
Fresh Water Holding Tank (gal.)	100	80	100	100	100
Grey Water Holding Tank (gal.)	58	58	58	58	58
Black Water Holding Tank (gal.)	42	42	42	42	42
Appliance LPG Tank (gal.) (WC) <sup>7</sup>	25	25	25	25	25
Water Heater Tank (gal.)	10	10	10	10	10

**Liquid Weight Reference:** Water (gal) = (8.3 lbs/3.8 kgs) Fuel (gal) = (6.1 lbs/2.8 kgs) LPG (gal) = (4.2 lbs/1.9 kgs)

**Metric Conversion:** Multiply pounds x 0.453 to obtain kilograms. Multiply gallons x 3.785 to obtain liters.

### CHASSIS

<b>Model:</b> Ford®/Workhorse™	<b>Transmission:</b> 4-Speed Automatic with Overdrive/ 5-Speed Automatic with Overdrive
<b>Engine:</b> 6.8L Triton™ V10/8.1L Vortec V8	<b>Horsepower:</b> 310 HP/340 HP
<b>Torque:</b> 425 lb.-ft. @ 3250 RPM/455 lb.-ft. @ 3200 RPM	<b>Tires:</b> 245/70R 19.5(F)/245/70R 19.5(G)
<b>Alternator Amps:</b> 130 Amp/145 Amp	

- GVWR (Gross Vehicle Weight Rating): Means the maximum permissible loaded weight of the motor home. The GVWR is equal to or greater than the sum of the unloaded vehicle weight plus the net carrying capacity.
  - GAWR (Gross Axle Weight Rating): Means the maximum permissible loaded weight a specific axle is designed to carry.
  - Base Weight: Means the estimated weight of the motor home without fuel, options, water, cargo or passengers.
  - GCWR (Gross Combined Weight Rating): Means the value specified by the motor home manufacturer as the maximum allowable loaded weight of this motor home with its towed vehicle. Towing and braking capacities may differ. Refer to Fleetwood and chassis manufacturer manuals for complete information.
  - Length taken from front bumper to rear bumper (excludes accessories).
  - Excludes safety equipment and awnings.
  - Tank Manufacturer's listed water capacity (WC). Actual LPG capacity is 80% of water listing as required by the safety code.
- † Only if standard.
- \* The chassis manufacturer recommends the installation of a supplemental brake control system to activate the brakes on the vehicle or trailer you are towing.

**IMPORTANT — PLEASE READ:** Product information, photography and illustrations included in this publication were as accurate as possible at the time of printing. For further product information and changes, please visit our website at [www.fleetwoodrv.com](http://www.fleetwoodrv.com) or contact your local Fleetwood dealer. Prices, materials, design and specifications are subject to change without notice. All weights, fuel, liquid capacities and dimensions are approximate. Fleetwood has designed its recreational vehicles to provide a variety of uses for its customers. Each vehicle features optimal seating, sleeping, storage and fluid capacities. The user is responsible for selecting the proper combination of loads (i.e. occupants, equipment, fluids, cargo, etc.) to ensure that the vehicle's capacities are not exceeded.

## What Drives You?

Maybe it's feeling like you're the only one on Earth. Perhaps it's the unique sense of closeness with the great outdoors. Or, it might be the joy that comes from spending quality time with family and friends. Whatever the reason, we know that you have a strong drive to experience everything that comes with spending time on the road. And for more than 50 years, we've shared that passion with you. Because we're RV enthusiasts ourselves, you can see our passion in the vehicles we design and build. Own a Fleetwood, and you'll feel like you're not just traveling, but embarking on an experience unlike any other. Set your own course for adventure and get out there and explore the world around you. Once you do, you'll see what it is that drives us — it's you.

RV OWNERCARE\* is a limited one-year/15,000-mile and three-year/50,000-mile structural warranty, whichever occurs first, and it is fully transferable for the first 12 months. RV OWNERCARE is one of the RV industry's most comprehensive programs and includes systems, appliances, components and construction, with no deductible and no service charge. RV OWNERCARE coverage is provided from a company that will be around in the future to service your needs. See your nearest Fleetwood dealer for a full explanation of benefits and restrictions.

**CLUB FLEETWOOD** As a Fleetwood owner, you're eligible to become a member of our owners' group, Club Fleetwood. It's a perfect way to meet other Fleetwood owners who love to travel to beautiful resorts and vacation spots all across America. Call (877) 577-2560 and join the fun! Or visit [www.fleetwood.com/clubs](http://www.fleetwood.com/clubs) to learn more. For Bounder specific club information contact: Bounders of America (860) 643-0877, [www.bounder.org](http://www.bounder.org) or Bounders United [www.bounder.net](http://www.bounder.net).

**FLEETWOODRV.COM** To locate a dealer near you, visit our website or call 1-800-444-4905. We can also be contacted at Fleetwood Customer Relations, P.O. Box 7638, Riverside, CA 92513-7638.



[www.fleetwoodrv.com](http://www.fleetwoodrv.com)

**IMPORTANT—PLEASE READ** Product information, photography and illustrations included in this publication were as accurate as possible at the time of printing. For further product information and changes, please visit our website at [www.fleetwoodrv.com](http://www.fleetwoodrv.com) or contact your local Fleetwood dealer. Prices, materials, design and specifications are subject to change without notice. All weights, fuel, liquid capacities and dimensions are approximate. Fleetwood has designed its recreational vehicles to provide a variety of uses for customers. Each vehicle features optimal seating, sleeping, storage and fluid capacities. The user is responsible for selecting the proper combination of loads (i.e. occupants, equipment, fluids, cargo, etc.) to ensure that the vehicle's capacities are not exceeded.

Your local Fleetwood dealer is:

**Colton RV – Northtowns**  
3122 Niagara Falls Blvd.  
North Tonawanda, NY 14120  
(716) 694-0188  
(800) 628-4889  
[www.ColtonRV.com](http://www.ColtonRV.com)

**Colton RV – Southtowns**  
3443 Southwestern Blvd.  
Orchard Park, NY 14127  
(716) 957-3250  
(800) 628-4889  
[www.ColtonRV.com](http://www.ColtonRV.com)

\*For complete info see your Fleetwood dealer. © 2004. Fleetwood Enterprises, Inc. Printed in the USA. Inventory control number BDR05F2 10/04.

