

CAMELOT | 03
BY MONACO



CAMELOT

It's Time for a Whole New Adventure.



*Behold, the
intrepid explorer.*

Let's face it, there's a little Lewis & Clark in all of us.

But when the day's adventures are done, most of us prefer

a bit of civilization to welcome us home. Like the Camelot's plush fabric upholstery or optional leather-faced furnishings. Not to mention roomy overhead storage spaces, beautiful color coordinated window treatments and cozy carpeting underfoot. There's also a 25" stereo

TV and VCR, as well as an optional home theater system with DVD player. So to all the fearless explorers who've gone before: we salute you.

This time, we'll see it all from the comfort of the Camelot.

The Camelot offers you a wide range of choices of colors and woods to help you customize your coach. Each exterior color comes with beautifully coordinated interior fabrics, and we are pleased to offer Grand Champion, featuring Ralph Lauren fabrics. In addition, our distinctive hardwood cabinets give our coaches their special character, and you'll enjoy choosing from a variety of oak, cherry, walnut, and maple finishes.

2003 woods, exterior colors and fabrics



Natural Oak



Stained Cherry



Stained
Oak



Natural
Maple

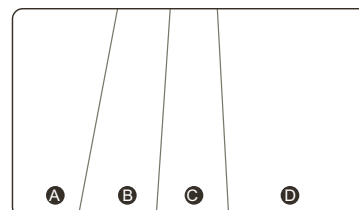


Natural
Cherry



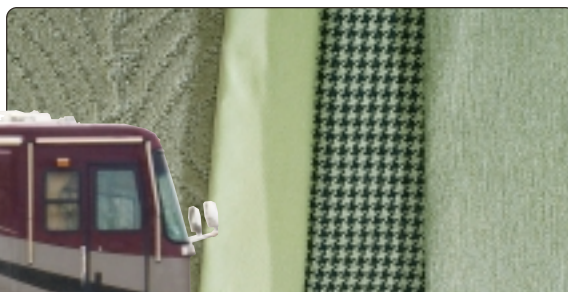
Walnut

Note: While the color of the motorhome's exterior and the interior fabrics shown in this sales brochure are fair and reasonable depictions, they may not be an exact match of the actual colors. In addition, the consistency of the wood grains may vary.

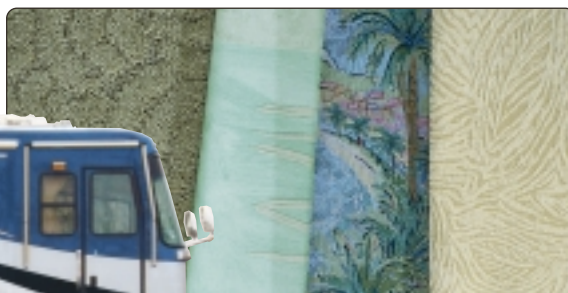


- A. Carpet
- B. Bedspread
- C. Chair/Accent
- D. Sofa

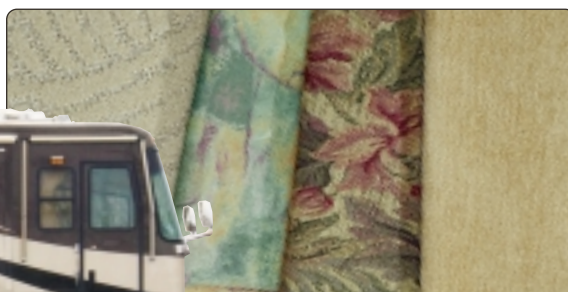
GRAND CHAMPION
FEATURING RALPH LAUREN FABRICS



PARADISE BLUE



SPICE

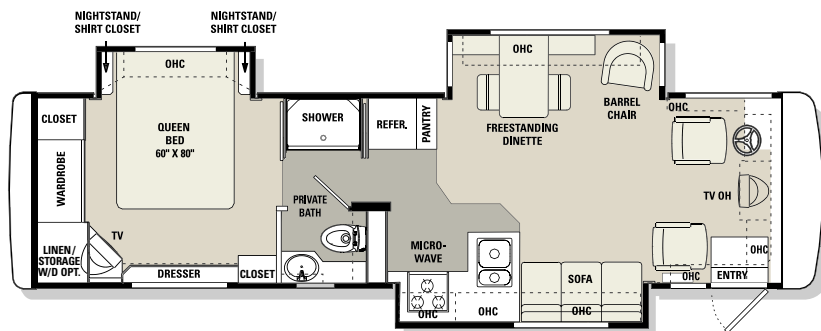


TOFFEE

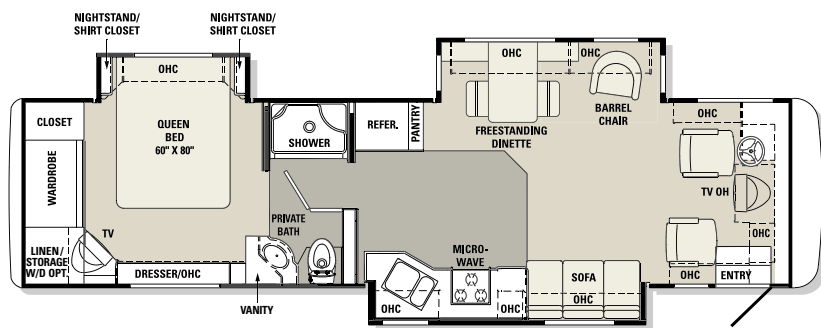


2003 floorplans

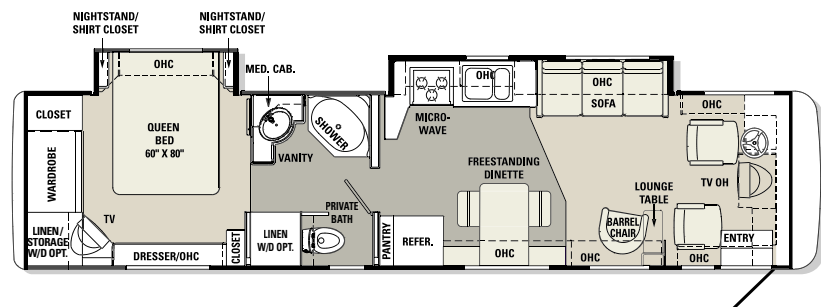
34PST



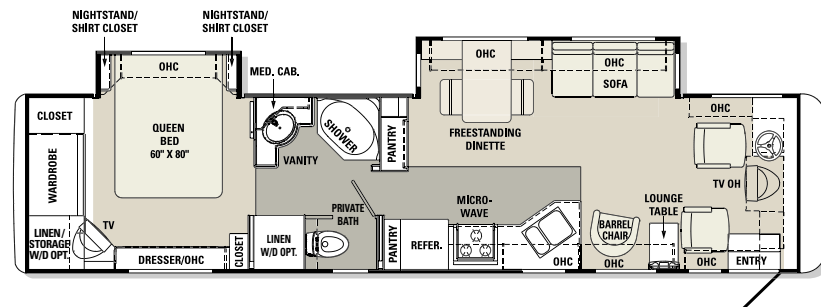
36PST



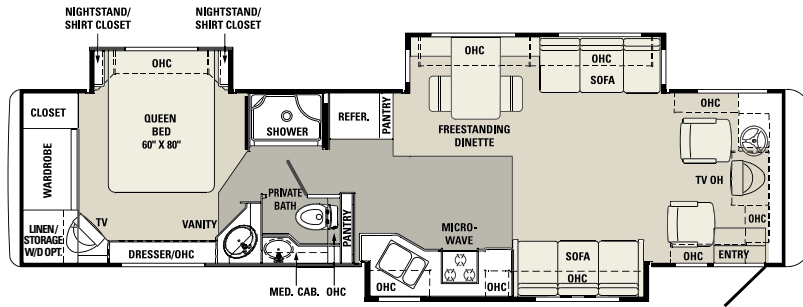
38PBD



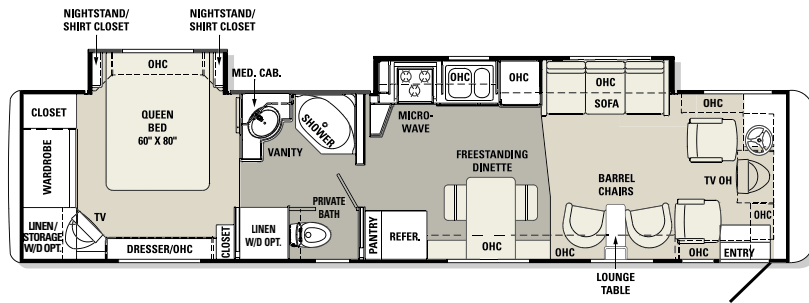
38PBDD



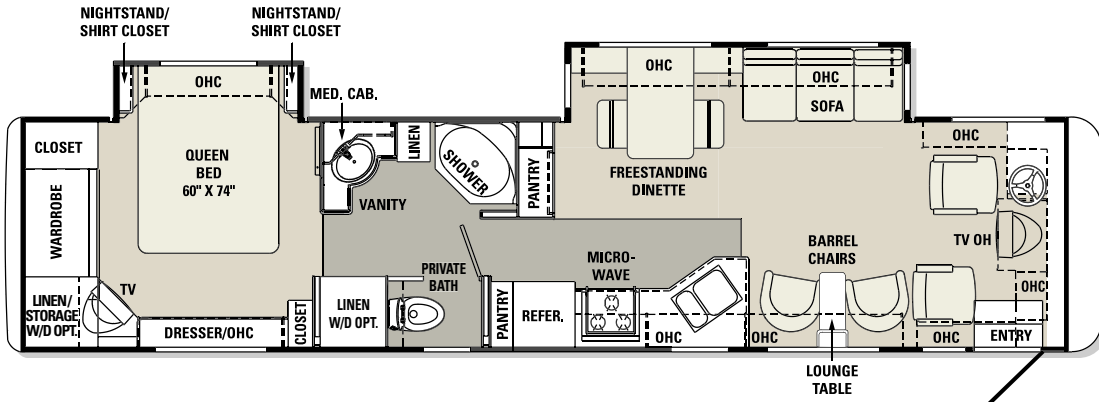
38PST



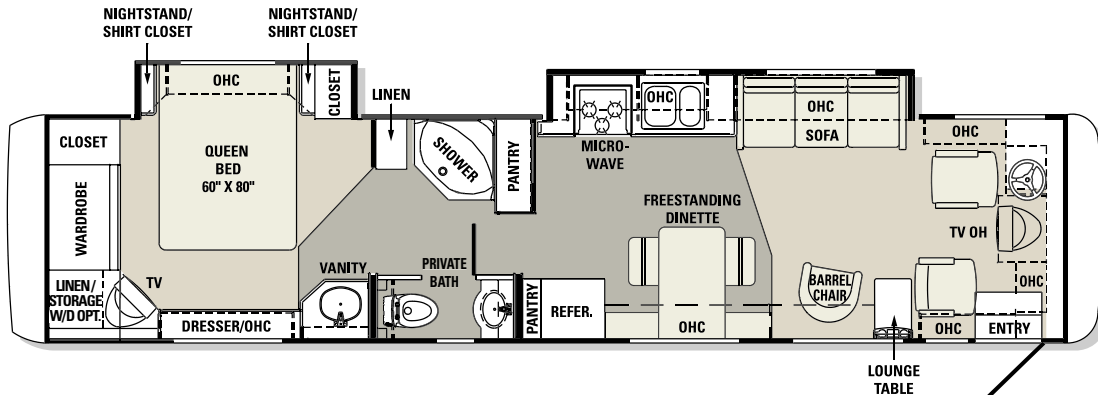
40PBD



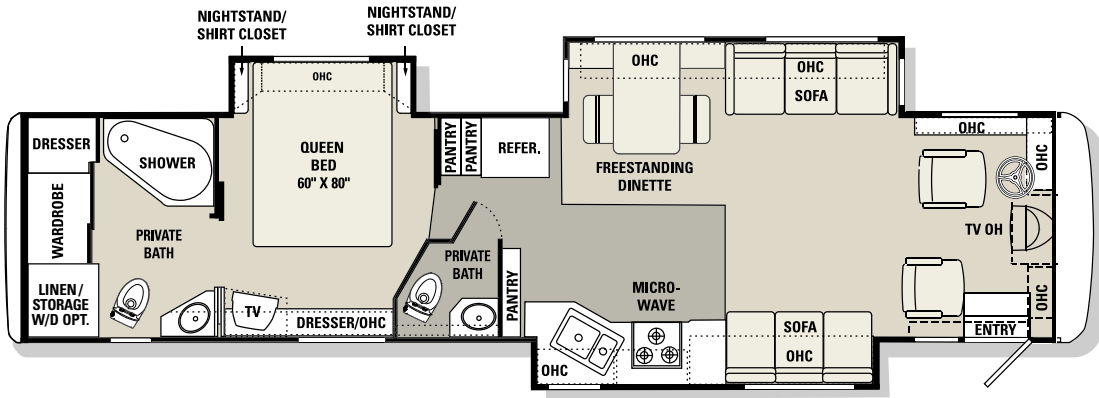
40PBD



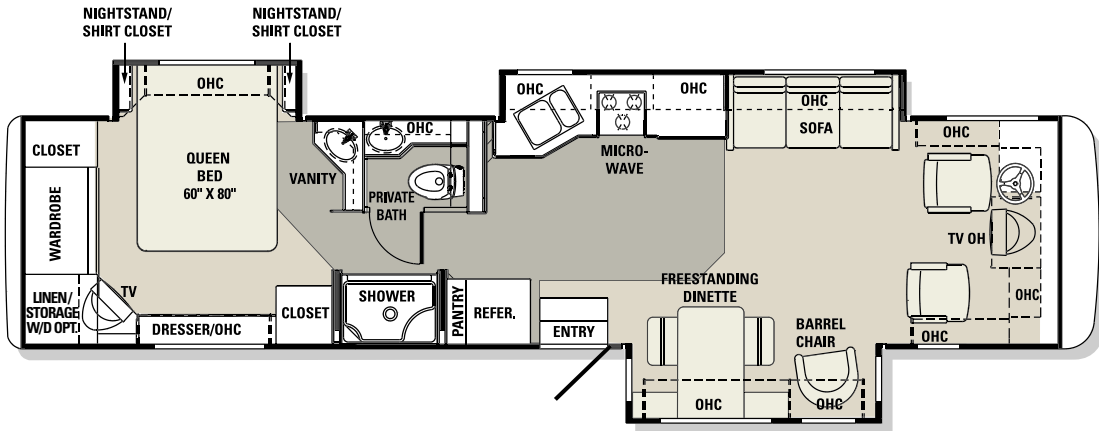
40PWD



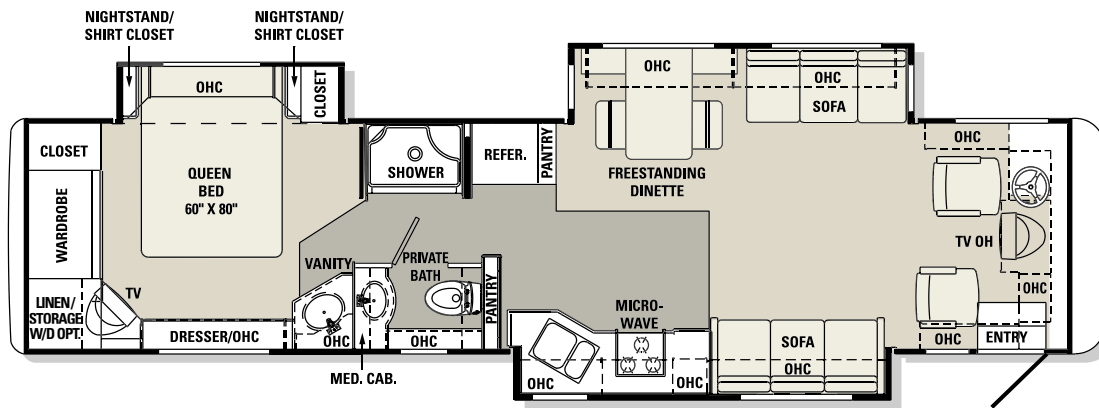
40DST



40PDT



40PST



2003 specifications, standards and options

WEIGHT RATINGS (LBS.)	34PST	36PST	38PBD	38PBDD	38PST	40PBD	40PBDD	40PWD	40DST	40PDT	40PST
Gross Vehicle	32,800	32,800	32,800	32,800	32,800	32,800	32,800	32,800	32,800	32,800	32,800
Gross Combined	42,800	42,800	42,800	42,800	42,800	42,800	42,800	42,800	42,800	42,800	42,800
Front Gross Axle	12,800	12,800	12,800	12,800	12,800	12,800	12,800	12,800	12,800	12,800	12,800
Rear Gross Axle	20,000	20,000	20,000	20,000	20,000	20,000	20,000	20,000	20,000	20,000	20,000

MEASUREMENTS

Wheelbase	196"	216"	242"	242"	242"	256"	256"	256"	256"	256"	256"
Overall Length	34' 10"	36' 6"	38' 9"	38' 9"	38' 9"	39' 11"	39' 11"	39' 11"	39' 11"	39' 11"	39' 11"
Overall Height (with A/C)	12'	12'	12'	12'	12'	12'	12'	12'	12'	12'	12'
Interior Height	78"	78"	78"	78"	78"	78"	78"	78"	78"	78"	78"
Interior Width	96"	96"	96"	96"	96"	96"	96"	96"	96"	96"	96"
Exterior Width	100½"	100½"	100½"	100½"	100½"	100½"	100½"	100½"	100½"	100½"	100½"

TANK CAPACITY (GAL.)

All tank capacities are approximate. Actual "usable capacity" may vary as a result of variances in installation and fabrication.

Water Heater	10	10	10	10	10	10	10	10	10	10	10
Gray Tank	60	60	60	60	60	60	60	60	60	60	60
Black Tank	39	39	39	39	39	39	39	39	39	39	39
Fresh Tank	100	100	100	100	100	100	100	100	100	100	100
LP Tank¹	38	38	38	38	38	38	38	38	38	38	38
Fuel Tank	100	100	100	100	100	100	100	100	100	100	100

¹ Actual filled LP capacity is 80% of listing due to safety shut-off required on tank.

BODY CONSTRUCTION

Aluminum Superstructure
Seamless One-Piece Molded Crowned
Fiberglass Roof
Laminated Gel Coat Fiberglass Sidewalls
One-Piece Front and Rear Molded
Fiberglass Caps
Integrated Fiberglass Front
and Rear Bumpers
Chrome Power Heated Remote Exterior
Mirrors
Halogen Fog Lights

Roof Mounted Dual Trumpet
Air Horns
One-Piece Generator Access Door
One-Piece Polyethylene Pass-Through
Storage Compartments
Insulated Aluminum
Baggage Doors
Steel Framed Floor
Structurwood™ Flooring
Foam Insulated Underbelly
with Luaun Backer
Deluxe Full Body Paint

Wheel Mud Flaps
Entry Step Storage
Rear Ladder

OPTIONS

3M® Film Front Mask
Full Length "Monaco" Mud Flap
Storage Bay Slide-Out Tray
(Pass-Through)

COCKPIT

Fiberglass Automotive Dash with Burlwood
Instrumentation Panel
CD Player/Radio with Six Speakers
Rear Vision System
Lighted VIP Smartwheel® with Controls for
Windshield Wipers, ICC, and Cruise
Control
Power Steering
Intermittent Windshield Wipers
Cruise Control Light on Dash
Audible Turn Signals
Low Coolant Warning Light
and Buzzer

Vinyl Pilot and Co-Pilot Seats
with Six-Way Power Pilot Seat
Air Activated Power Step Well Cover
Carpet Driver and Passenger
Floor Mats
Power Sunvisors
Adjustable Accelerator
and Brake Pedals
CB Prep with Antenna
Drink Tray
Antenna "Up" Light on Dash

OPTIONS

Six-Way Power Co-Pilot Seat
Leather-Faced Pilot and Co-Pilot Seats
Co-Pilot Seat With Power Footrest
(Requires Six-Way Power
Co-Pilot Seat)
Extra-Wide Co-Pilot Seat with Power
Footrest (Requires Six-Way Power Co-Pilot
Seat)
CB Radio
Dash Fans

APPLIANCES AND ACCESSORIES

Double-Door Refrigerator with Raised Panel Doors
Recessed High Output Three-Burner Cooktop with Flush Mount Cover
Spacesaver Convection Microwave with Touch Control
TV Antenna and Booster
Digital Satellite System Prep
25-inch Stereo Color TV with Remote in Living Area

19-inch Stereo Color TV with Remote in Bedroom
Stereo VCR and Video Switching Box
Stereo TV and VCR Wired Through Ceiling Speakers
Cable TV Hook-Up and Telephone Jacks
Washer/Dryer Prep

OPTIONS

Double-Door Refrigerator with Ice Maker and Raised Panel Doors
Four-Door Refrigerator with Ice Maker
Combination Washer/Dryer (Bedroom)
Combination Washer/Dryer (Bathroom) (38PBD, 38PBDD, 40PBD, 40PBDD)

Fully Automatic Digital Satellite System
10-Disc CD Changer
Home Theater System with DVD Player
AM/FM Stereo Cassette (Deletes CD)

INTERIOR

Stained Oak Cabinetry
Solid Wood Square Raised Panel Cabinet Doors
Low Friction Roller Drawer Guides
Four Compartment Drawer Organizer
Bedroom Dresser
Padded Vinyl Ceiling
Solid Surface Kitchen Countertop with Stainless Steel Sinks and Two Sink Covers
Waste Basket Under Kitchen Sink
Solid Surface Bathroom Countertop with Integrated Sink
Day/Night Pleated Shades in Living Area with Blackout Shades in Bedroom

Mini Blinds in Kitchen and Bathroom
Fabric Sleeper Sofa
Fabric Barrel Chair(s) (N/A: 36PST, 38PST, 40PST)
Nylon Carpeting and Pad in Living Area and Bedroom
Freestanding Dinette Table with Two Chairs and Two Folding Chairs
Ceramic Tile in Kitchen and Bathroom
Oversized Rear Wardrobe Closet with Mirrors
Full Length Dressing Mirror
Medicine Cabinet with Shelves
Bathroom Mirror
Towel Bars in Bathroom

Raised Panel Bathroom Door
Bedspread and Pillows
Folding Party Table (N/A: 36PST, 38PST, 40PST)
Nightstands with Laminate Countertops

OPTIONS

Natural Oak Cabinetry
Walnut Cabinetry
Natural Maple Cabinetry
Stained Cherry Cabinetry
Natural Cherry Cabinetry
Computer Table (Requires Recliner) (40PBD, 40PWD)
Wilsonart® Flooring in Kitchen and Bathroom

and Two Folding Chairs (Forced Option)
Booth Dinette
Fabric Magic Bed (Driver's Side)
Fabric Electric Sofa
Fabric Recliner (N/A: 36PST, 38PST, 40PST)
Leather-Faced Recliner (N/A: 36PST, 38PST, 40PST)
Leather-Faced J-Lounge (Curbside) (36PST, 38PST, and 40' Models)

Legless Solid Surface Dinette Table with Two Dinette Chairs

ELECTRICAL SYSTEMS AND LIGHTS

50 Amp 120V Distribution Panel and Power Cord
Onan® 6.5 KW LP Generator
2000-Watt Inverter with Auto Gen Start
Two 6V Deep Cycle Batteries
Battery Disconnect Switch
Dual 12V Outlets in Dash
12V and 110V Outlet in Cockpit Area
Porch Light

Pilot and Co-Pilot Map Lights
Courtesy Lights in Entry Step and Bedroom
Lights in Outside Storage Compartment
120V Receptacles Inside Storage Compartment
Underhood Utility Light
Computer Hook-Up with Phone Jack in Dinette Area
Systems Control Center

Fluorescent Ceiling Lights in Kitchen
Decorative Gem Lighting Under Overhead Cabinets
Cosmetic Vanity Lights in Bathroom
Lighted Utility Center (Telephone, Cable TV, Water, Electrical Hook-Ups)
Decorative Wall Lights in Bedroom
Decorative Wall Lights in Living Area

OPTIONS

Onan® 7.5 KW Quiet Diesel Generator
Energy Management System
Power Cord Reel
Solar Panel

PLUMBING AND LP SYSTEMS

Demand Water System
10-Gallon LP Gas/Electric Water Heater with Electronic Ignition (DSI)
Water Pump with Water Pump Switch in Service Bay and Bathroom
Winterization Valving System
Water Filter in Kitchen

One-Piece Fiberglass Shower
Glass Shower Door with Brass Frame
China Toilet
No-Fuss Flush Black Holding Tank Rinsing System
Insulated Systems Compartment with Easy Access to Hook-Up

Gravity and Pressurized Water Fill
Outside Shower with Hot and Cold Water

OPTIONS

Power Water Hose Reel
Bath Tub
(N/A: 36PST, 38PST, 40PST)

HEATING, VENTS, AND AIR CONDITIONING

Two Low Profile 13.5M BTU Roof Air Conditioners with Ducted Air and Wall Thermostat with Heat Pumps
40M BTU Electronic Ignition Furnace (Two 25M BTU Furnaces on Triple Slide-Outs)

Electronic AC/Heat Climate Control System
In-Floor Ducted Heating System
12V Roof Vent in Bathroom
12V Attic Fan in Kitchen
Wet Bay with 12V Heater

OPTIONS

12V Attic Fan in Bathroom
Aqua-Hot® Heating System

WINDOWS, DOORS, AND AWNINGS

Flush Mount Radius Dual Pane Safety Glass Dark Tinted Slider Windows
Entry Door with Removable Screen
Front Door Awning (N/A: 40PDT)
Power Entrance Step

Tinted Skylight in Bathroom
Interior and Exterior Grab Handles
Patio Awning with Color Coordinated Hardware
Omega Slide-Out Awnings

OPTIONS

Window Awning
Carefree® Automatic Patio Awning
Girard® Automatic Patio Awning

SAFETY

Fire Extinguisher
Deadbolt Lock on Entrance Door
120V GFI Protected Circuit (Kitchen, Bathroom, Exterior)

LP Gas Detector
Smoke Detector
Carbon Monoxide Detector
Pilot and Co-Pilot Three-Point Seat Belts (Lap and Shoulder)

Third Brake Safety Light
Egress Window

CHASSIS/ENGINE/SUSPENSION

Roadmaster Raised Rail Chassis
Cummins® ISC 350 Electronic Engine with Allison® 3000 MH Six-Speed World Transmission and Electronic Shifter
Torque: 1050 lbs./ft. Max. Net at 1,400 RPM
Rear Axle Ratio: 4.30:1
Cubic Inch Displacement: 504.5"/8.3L
160 Amp Alternator
Dual Fuel Fill
Stainless Steel Wheel Simulators
Tires: 275/70R/22.5 H

Cushion Air Glide Suspension with Eight Outboard Mounted Air Springs and Eight Gas Shock Absorbers
Transmission Temperature Gauge
Transmission Oil Cooler
Anti-Lock Braking System with Full Air Brakes (Drum)
Pac Exhaust Brake
Auto Slack Adjusters
Automatic Traction Control
Fuel/Water Separator
Side Radiator
Air Cleaner Restriction Indicator

Engine Block Heater
Hydraulic Leveling System
10,000 lb. Hitch Receiver¹ with Six-Point Connector
Undercoating

OPTIONS

Polished Aluminum Wheels
Air Leveling System
Dual Leveling System (Air/Hydraulic)

¹ Your towed vehicle should be equipped with auxiliary brakes if the weight of the towed load exceeds 1,000 lbs.