


A silver, oval-shaped logo with a metallic texture and a slight shadow, centered on a horizontal line that divides the page into a red upper half and a black lower half. The word "Essex" is written in a black, serif font within the oval.

Essex

NEW MAR 2007



INTRODUCING THE 2007 ESSEX—THE HEAD-TURNING, HEART-STOPPING FUSION OF HIS AND HER WORLDS.

When Newmar engineers were designing the extraordinary 2007 Essex, they discovered an interesting relationship between power and elegance. Essex's brawny infrastructure possessed a strikingly poetic quality. And conversely, the gorgeous interior space evoked a powerful, unexpected response.

After many long hours working to perfect this relationship, the engineers revealed their finished product—a mind-blowing luxury vehicle that offers unparalleled amenities for both him *and* her.

BEHOLD THE POWER AND *beauty* OF ESSEX.



IT'S YOUR TURN TO *own* THE ROAD.

Essex is tall and sweeping, from its aerodynamic front cap to its monumental rear cap. And with Full-Paint Masterpiece Finish™ and high-gloss Super Clear Coat with Diamond Shield Front Protective Film, Essex's stunning exterior will look new for years to come.

The new one-piece windshield and convex chrome mirrors with remote control, defrost and turn signals enhance your driving visibility and allow a superior view of the road as it rolls beneath you.



**SAVOR THE *breathtaking***  
**VIEWS INSIDE AND OUT.**

Come inside. Your new living area is spectacular.

Each intelligently designed floorplan, with up to four masterfully crafted slideouts, was designed with careful attention to detail and all the modern conveniences you desire.

Lose yourself in the graceful curves and details that give Essex its distinctively residential feel. The exquisite fabrics and textures, distinguished columns and polished porcelain floors are all heart-stirring.



EXPERIENCE A DRIVING *triumph.*

Grasp Essex's impressive wheel and feel your heart race as you channel the incredible strength of its 500-hp Cummins® engine with an Allison® transmission.

Essex owes its solid construction to legendary Newmar craftsmanship. Atop its massive Spartan® K2 chassis are cavernous pass-through storage compartments that are easy to access and spacious enough to accommodate your life on the road.

INDULGE YOUR *refined* PALATE.

The gorgeous Essex satisfies your appetite for artistry. Have a seat at your elegant dining table and rest assured, your kitchen can accommodate even the most discriminating gourmet.

Essex's remarkable kitchen was built to make food preparation simple and enjoyable. Delight in convenient features, including spacious Corian® countertops,

state-of-the-art appliances and an optional in-drawer dishwasher.

The meticulously handcrafted hardwood cabinets throughout Essex are both attractive and functional. You'll appreciate the dovetail drawer construction, decorative hardware and intricate detailing.





Essex has phenomenal stopping power, thanks to its front disc brakes and anti-lock braking system. The Accuride Accu-Shield™ aluminum wheels with automatic traction control let you gracefully hug the curves or stop on a dime—even in wet conditions.



On cool evenings, you'll enjoy curling up next to your cozy optional electric fireplace. Turn the fire on with the remote control and bask in its warmth for hours.



Essex is known for its subtle, attractive touches. Notice the newly designed headlights and taillights that adorn Essex's regal front and rear caps. The daylight system offers added safety while on the road.



Your favorite films are even more captivating when viewed on your home theater system—with a crystal-clear Sony® LCD TV and surround sound. State-of-the-art electronics are featured throughout your new luxury coach.



## LUXURIATE IN *style* AND GRACE.

After a long day, nothing feels better than unwinding in a luxurious space that was created for just you.

Prepare for bed at your personal vanity. Its mirror ingeniously doubles as a Phillips® flatscreen TV. Opposite your vanity is a stylish new headboard and optional four-poster bed that create an inviting backdrop for your dreams. Nestle into your grand, king-sized bed and wrap yourself in Essex's

deluxe bedspread and faux fur throw. And when sleep finally beckons, ease into a restful night on your comfortable King Koil™ Turn-Free Quilted Mattress.

Your king-sized bed raises to reveal plentiful storage for folding chairs and off-season clothing. And the rich hardwood cabinets and deep cedar-lined closet are large enough to comfortably conceal your personal items.





## PUT YOUR *excitement* IN DRIVE.

Stepping behind the wheel has never felt this exhilarating.

The powerful new Essex handles almost intuitively. Revolutionary Comfort Drive® delivers unprecedented power steering in a motor coach and allows you to drive with the ease of a luxury automobile. It's a Newmar innovation you won't find anywhere else.

Slide into the comfortable driver's seat and master the terrain. Your heated ultraleather seats were designed to endure the long haul with an eight-way power control, automatic recline and power lumbar support. Controls and gauges are within easy reach, including the all-encompassing Pioneer® Navigation System with an AM/FM stereo, CD player, GPS system, DVD player and a 10GB MP3 player.



Your exquisite bathroom is replete with Corian® countertops with no-drip edges and hardwood cabinets that provide ample space for toiletries. Polished silver fixtures and frosted glass help create the perfect ambiance for your morning routine.



Your master bedroom's vanity includes a comfortable fabric sitting stool and a Bose® Wave Radio. The vanity's mirror transforms into a 30" Phillips® TV or a computer monitor at the touch of a button.



Whether you're preparing a small snack or a five-course meal, cooking is a breeze with your standard 30" GE® convection microwave oven and two-burner recessed stove. Spacious countertops allow plenty of room for preparation and all of your cooking utensils.



The stage is set for stimulating conversation at Essex's dining table with four decorative chairs or optional ultraleather dinette. The mood lighting in the vaulted window arches is sure to enrich all of your dining experiences.

EXTERIOR PAINT

INTERIOR DECOR



Venetian Sunset



Tahiti Ivory



Continental Jade



Bronzed Patina



Palazzo Café



Brilliant Silver



Palazzo Café



Continental Jade



Bronzed Patina



Venetian Sunset



Tahiti Ivory



Brilliant Silver



Natural Cherry



Cherry w/ Ginger Glaze



Pearl Glazed Maple



Northern Maple

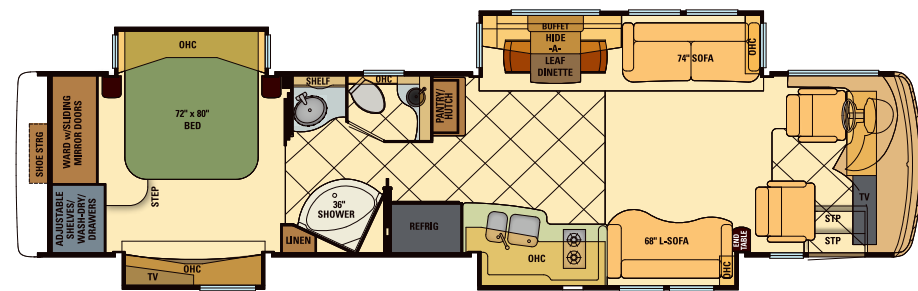


Heirloom Cherry

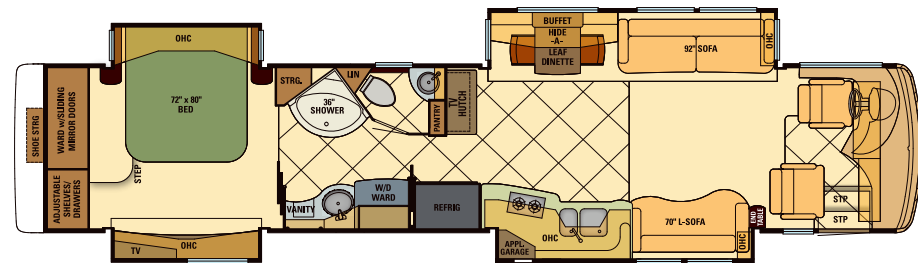


Kensington Glaze

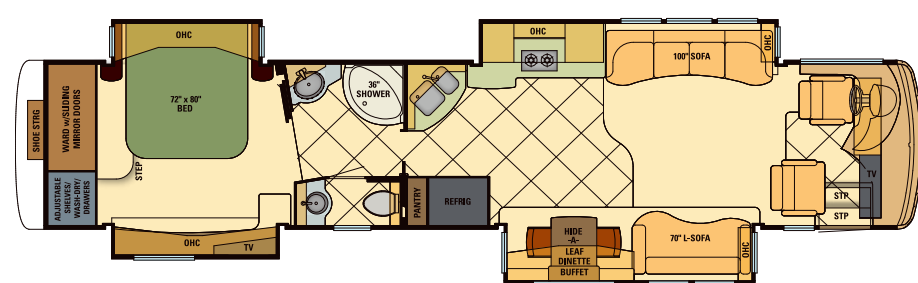
2007 Essex Diesel Pusher 4103



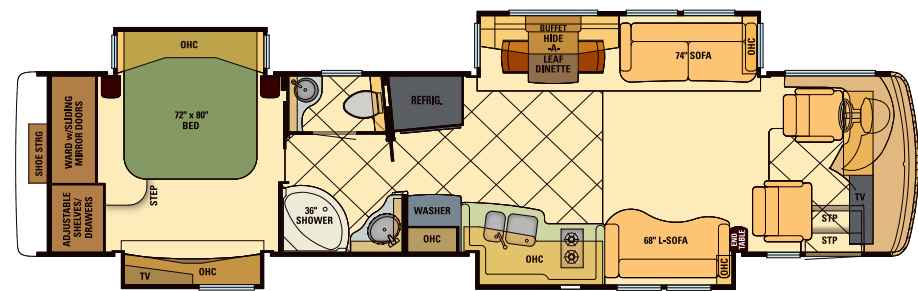
2007 Essex Diesel Pusher 4502



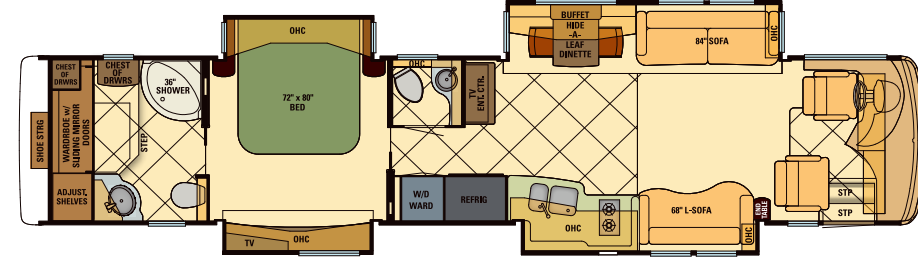
2007 Essex Diesel Pusher 4510



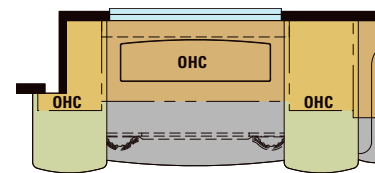
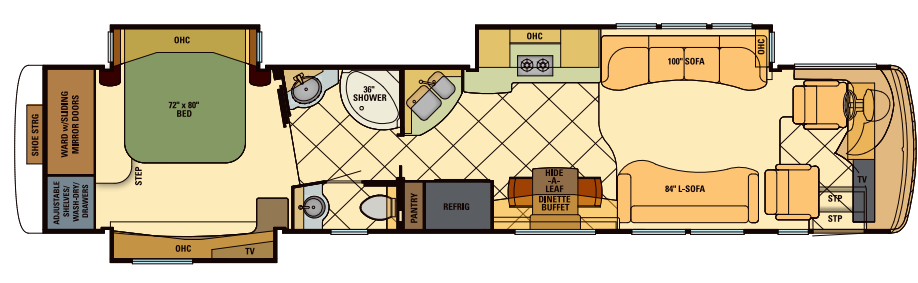
2007 Essex Diesel Pusher 4104



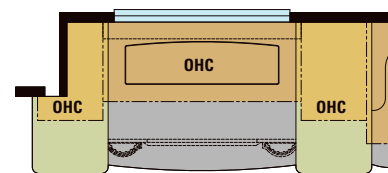
2007 Essex Diesel Pusher 4508



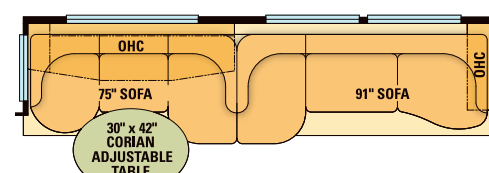
2007 Essex Diesel Pusher 4511



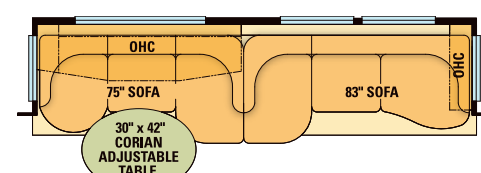
J355-EX41-Fireplace/TV Option  
EXDP 4103, 4104, 4508



J355-1-Fireplace/TV Option  
EXDP 4502

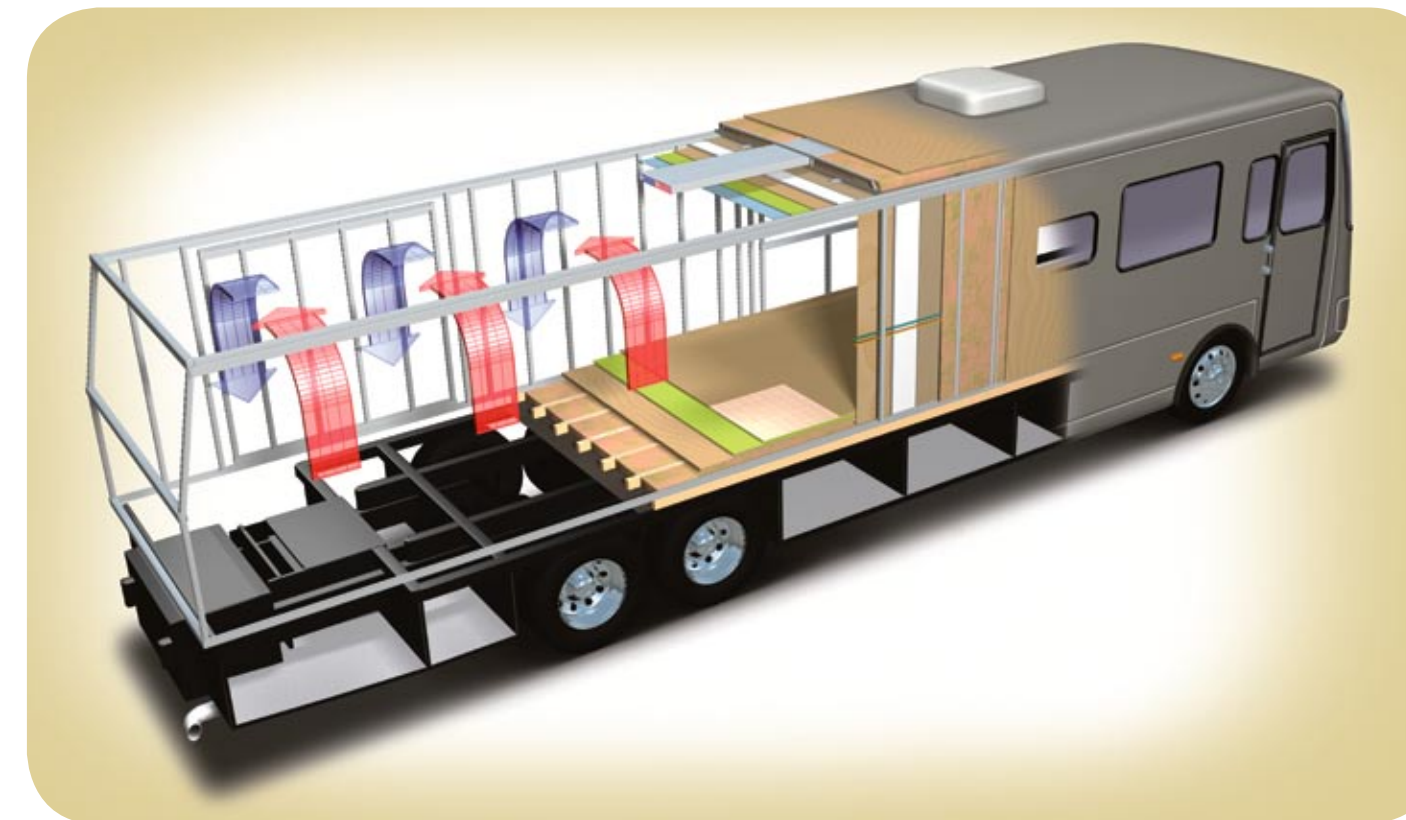


K331-Sofa/Dinette Combination  
EXDP 4502



K331-Sofa/Dinette Combination  
EXDP 4508

Essex is a showcase for Newmar's exacting standards, meticulous detailing and legendary craftsmanship. The sturdy coach boasts a one-piece molded fiberglass roof and 16" on-center framing like that of a fine, site-built home.



## NEWMAR EXPRESS LIMITED WARRANTY™

Every Essex Diesel Pusher is backed by Newmar's two-year limited warranty/unlimited miles. Ask your Newmar dealer for details.

## TOTAL COMFORT™ NEWMAR CENTRAL AIR CONDITIONING

Newmar's exceptional Total Comfort central air conditioning is standard on every Essex. The system consists of two separate fully ducted systems—one to distribute incoming cool air, the other to quickly and effectively remove warm air from your living area.



- Roof R-Value = 16
- One-Piece Molded Fiberglass Roof
- 9mm Wood Decking
- Aluminum Rafter Framing
- Fiberglass Batten Insulation
- Sikaflex
- A/C Ducting
- Aluminum Stringer Framing
- Kraft Paper Vapor Barrier
- 5/8" Bead Foam
- 3/16" Panel
- Padded Vinyl Overlay

- Sidewall R-Value = 11
- Composite One-Piece Gelcoat
- Exterior Sidewall
- 3/16" Plywood Exterior Wall
- Fiberglass Batten Insulation
- Sikaflex
- 5/8" Bead Foam
- 3/16" Plywood Interior Wall
- Kraft Paper Vapor Barrier
- Aluminum Framing with 3 1/2" Header Above

- Floor R-Value = 16
- Carpet/Tile
- Carpet Padding
- 5/8" Floor Decking
- 2" X 3" Wood Framing
- Fiberglass Batten Insulation
- Polyethylene Moisture Barrier

- Basement R-Value = 4
- Cargo Liner
- 3/8" Floor Decking
- 3/16" Luan Panel
- 1 1/2" Bead Foam
- Aluminum Sheeting with Steel Support Rails to Prevent Bowing and Flexing

## STANDARD FEATURES

### Chassis

Spartan® K2 Chassis with IFS  
Cummins® ISM 500 hp  
Allison® 4000-MH Transmission  
Tag Axle  
Automatic Traction Control  
Power Trw Comfort Drive® Steering  
Accuride Accu-Shield™ Non-Polish Aluminum Wheels  
Four Point Hydraulic Jacks with Automatic Control & Chassis Air Leveling  
Power Tilt-and-Telescope with Burl Wood VIP Smart Wheel  
Memory Settings for Driver's Seat, Pedals, Steering Wheel & Exterior Mirrors  
Cruise Control  
Recessed Fuel Fills with Crossover to Fill from Either Side  
Back-Up Alarm  
Anti-Lock Braking System  
Front Disc Brakes  
Electronic Chassis Information Display in Dash  
Chassis Service Center  
Leece-Neville 200-Amp Alternator  
55-Degree Cramp Angle

### Air Conditioning and Heating

Two 15M Penguin™ Heat Pump Central Air Conditioners with Remote Control Thermostat (41' Floorplans)  
Three 15M Penguin™ Heat Pump Central Air Conditioners with Remote Control Thermostat (45' Floorplans)  
Hydronic Zone Heating System  
Dash Heater & High-Output Air Conditioner  
Propane Leak Detector

### Appliances and Accessories

30" Convection Microwave Oven  
Two-Burner Recessed Cooktop  
Polished Corian® Range Cover  
Dometic® 13.8 Cu. Ft. Refrigerator with Auto Defrost & Icemaker  
One-Piece Washer/Dryer Prep  
Sony® 32" LCD Color TV in Living Area  
30" Phillips® LCD Mirror/Color TV/PC Monitor in Bedroom  
Pioneer® AM/FM Radio with CD Player & Combination Rearview Color Monitor with Navigation System

Surround Sound System with CD & DVD Player  
Bose® Wave Radio with CD Player & Alarm Clock in Bedroom  
TV Antenna with Power Lift, 1 Exterior Jack & 2 Interior Jacks  
Satellite Prep—Phone, TV Jack & Receptacle  
Telephone Connection with Phone Jacks in Living & Dash Area  
Roof-Mounted Air Horns  
8.5" X 11" Safe  
Universal Remote Control  
VCR & Audio/Video Smart-Source Switch with Remote Control  
10-Bc Fire Extinguisher, Carbon Monoxide & Smoke Detectors

### Cabinets and Furniture

Northern Maple Hardwood Unitized Cabinets with Raised-Panel, Double-Cathedral Cabinet Doors  
Hidden-Leaf Dinette Table with Corian® Top & 4 Chairs (2 Fixed, 2 Folding)\*  
Polished Corian® Countertop in Kitchen with Integrated Sink & Flush Sink Covers  
Polished Corian® Countertop with Integrated Bowl in Bathroom  
Polished Corian® Countertop on Bedroom Nightstands  
Adjustable Pullout Pantry Shelves\*  
Residential-Style Full Extension Ball Bearing Drawer Guides  
Drawers with Dovetailed Sides & Maple Bottoms  
Concealed Hinges on Cabinet Doors  
Villa® Furniture  
Ultraleather Heated Driver Seat with 8-Way Power, Power Lumbar & Power Recline  
Ultraleather Heated Oversized Passenger Seat with 8-Way Power, Power Lumbar, Power Recline & Power Footrest  
Lifts on Bed Top to Access Storage Area  
Cedar Paneling on Rear Wardrobe Wall & under Bed  
Storage Shelves Recessed into Rear Cap of Rear Wardrobe Floorplans  
King Koil™ Turn-Free Mattress with Quilted Bedspread, Reverse Shams, Matching Padded Bed Base, Accent Pillows & Faux Fur Throw  
King Bed with Hardwood, Raised-Panel Bed Base

### Electrical

12.0 kW PowerTech Diesel Quiet Generator on Hydraulic Slide & Auto Changeover  
50-Amp Electrical Service with Flexible Cord on Power Cord Rewind Reel  
Four 6-Volt House Batteries on Pullout Tray

Battery Disconnect Switch  
110-Volt Receptacle on Door Side  
5-Watt Solar Panel  
3100-Watt Inverter  
Emergency Start Switch  
Automatic Generator Start  
Exterior Security Light on Each Side  
Midship Side Turn Signals  
Recessed Docking Lights  
Switched Receptacle for Engine Block Heater  
Recessed Halogen Ceiling Lights Throughout  
Lighted Wardrobes with Automatic Switches  
Slideout Information Voice Module  
Manually Operated Hold-to-Run Slideout Switch  
ICC Light Switch  
Two 12-Volt Auxiliary Receptacles on Dashboard  
Interior Courtesy Lights  
Mood Lights Recessed in Ceiling, Lambrequins, Kitchen Valance & Bed Base  
Solar Prep  
Daylight Headlight System  
Multi-Plex Electrical System

### Exterior

Full-Paint Masterpiece Finish™ with Super Clear Coat & Diamond Shield Front Protective Film  
One-Piece Bonded Windshield  
Convex Exterior Chrome Mirrors with Remote Control, Defrost & Turn Signals  
Automatic Entrance Door with Double Step  
Pneumatic Latching Front Door with Power Flush Stepwell Cover  
Lighted Exterior Storage Compartments with Cargo Liner  
Pantographic Basement Doors with Side-Hinged Doors under Slideouts  
Power Locking Baggage Doors  
15,000 lb. Towing Hitch with 2 Extra 14-Gauge Wires  
Lighted Acrylic Assist Handle at Entrance Door  
Rear Protective Tow Guard with Stainless Steel Newmar Name Cutout  
Holding Tank Levels Displayed in Exterior Water Works Compartment  
Squeegee in Exterior Compartment  
Undercoating  
Mud Flaps

## STANDARD AND OPTIONAL FEATURES

### Interior

Sculpted Padded Vinyl Ceiling  
Power Drop-Down Front Curtains  
Lined Day/Night Pleated Window Shades & Lambrequins  
Hardwood Ornate Fascia on Living Area Slideout  
Polished Corian® Window Sills  
Polished Porcelain Floor Tile in Kitchen, Bathroom & Driver/Passenger Area  
Fabrica® Carpeting with High-Density Padding & Sculptured Carpet in Living & Bedroom Areas  
Raised-Panel Interior Passage Doors  
Interior Assist Handle at Main Entrance Door  
Power Driver- & Passenger-Side Sun Shades  
Power-Activated Sun Visors  
Framed Decorative Pictures in Bathroom

### Plumbing and Bath

Demand Water System with Aquajet™ ES Pump  
Sewage Holding-Tank Rinse  
Thetford™ Aria Sculptured China Stool (Thetford™ Vacuum Flush Stool in Rear Bath)  
Towel Bar, Tissue Holder, Towel Ring & Robe Hook  
Exterior Convenience Wash Station—Hot/Cold Water, Soap & Towel Dispenser  
Fiberglass Tub/Shower & Glass Shower Door  
Monitor Panel in Interior & Exterior Water Compartments  
Manabloc® Plumbing System  
Monoplex Water Pump Switches Located in Bathroom, Kitchen & near Gate Valves  
Auto Water-Fill System  
Designer Faucets in Bathroom & Kitchen  
Whole House Water Filter  
Water Filter with Drink Dispenser at Kitchen Sink  
Automatic Rewind Water-Hose Reel

### Construction

One-Piece Molded Fiberglass Roof with 9mm Decking  
Gelcoated Fiberglass Exterior Sides  
Gelcoated Fiberglass Front & Rear Caps  
Aluminum-Frame Sidewalls & Roof Construction (16" On-Center)  
Power Lock Arms on All Slideout Rooms

5/8" Foam Insulation Laminated in Sidewalls & Ceiling  
Roof R-Value Rating: 16  
Sidewall R-Value Rating: 11  
Floor R-Value Rating: 16  
Basement R-Value Rating: 4

### Windows, Awnings and Vents

Double-Pane, Tinted, Safety-Glass Windows  
Fan-Tastic® Vent with Rain Sensor in Kitchen Area & Bathroom  
Skylight in Bathroom  
Driver's-Side Power Window  
A&E® 9000 Bedroom & Slideout Window Awnings  
Integrated A&E® Power Box Side Awning  
A&E® Oasis Power Front Entrance Door Awning  
A&E® Slideout Awning Covers  
Cockpit Overhead Ventilation System

## OPTIONAL FEATURES

### Appliances and Accessories

30" GE® Speedcook Advantium® Microwave Oven  
Norcold® 12 Cu. Ft. 4-Door Refrigerator with Icemaker & Water Dispenser  
Norcold® Freezer on Pullout Tray  
One-Piece Washer/Dryer\*  
Stackable Washer/Dryer in Full-Length Cabinet\*  
Dishwasher in Drawer\*  
All-Electric Unit with Dometic®, Frigidaire® or Norcold® Refrigerator & 4 Extra Batteries\*  
Sony 23" LCD Color TV in Front Overhead Cabinet\*  
Pre-Wire for High-Definition TV  
Trip Tek™ Electronic Travel Information (Displayed on Rearview Monitor)  
Navigation System with Additional Monitor for Passenger  
Remote-Controlled Rearview Camera  
Sideview Cameras with Image Displayed on Rearview Monitor Screen  
Secondary Multiple Touch-Screen Control  
Entertainment Center with TV on Power Lift & Electric Fireplace\*  
External Entertainment Center with Sony 23" LCD Monitor, AM/FM Radio & CD Player on Adjustable Swing Arm  
King Dome In-Motion Satellite without Receiver  
KVH R-6 In-Motion Satellite without Receiver

Central Vacuum with Deluxe Tool Kit  
Security System  
CB Radio with Antenna  
Wireless Internet Connection

### Cabinets and Furniture

Heirloom Cherry Hardwood Cabinets  
Natural Cherry Hardwood Cabinets  
Ginger Glazed Cherry Hardwood Cabinets  
Kensington Glazed Cherry Hardwood Cabinets  
Pearl Glazed Maple Hardwood Cabinets  
Ultraleather Sofa\*  
Ultraleather Sofa/Dinette Ensemble with 2 Folding Chairs\*  
Four-Poster Bed\*  
Queen Bed\*

### Electrical

12.5 kW Onan® Diesel Quiet Series Generator  
Roof-Mounted Spotlight

### Exterior

Large Storage Tray with Access from Either Side  
Power Sliding Storage Tray

### Interior

Polished Porcelain Floor Tile throughout Living Area with Custom Area Rug

### Plumbing and Bath

Assist Handle in Tub/Shower  
Corian® Shower Walls with Ceramic Tile Inserts

### Windows, Awnings and Vents

Girard® Awning Package with Power Window Awnings  
Carefree® Awning Package with Power Window Awnings  
Keyless Entry

*\*Check with dealership on floorplan availability.*



# SPECIFICATIONS

## FLOORPLAN SPECIFICATIONS

FLOORPLAN	APP. OVERALL LENGTH	APP. OVERALL WIDTH	APP. OVERALL HEIGHT	INTERIOR WIDTH	INTERIOR HEIGHT	GREY	SEWAGE	WATER	LP	FURNACE	WATER HEATER
2007 EXDP 4103	40' 11"	101.5"	12' 10"	95.5"	84"	65 gal.	45 gal.	105 gal.	32 gal.	50,000 Btu	Cont.
2007 EXDP 4104	40' 11"	101.5"	12' 10"	95.5"	84"	65 gal.	45 gal.	105 gal.	32 gal.	50,000 Btu	Cont.
2007 EXDP 4502	44' 11"	101.5"	12' 10"	95.5"	84"	65 gal.	45 gal.	105 gal.	32 gal.	50,000 Btu	Cont.
2007 EXDP 4508	44' 11"	101.5"	12' 10"	95.5"	84"	65 gal.	45 gal.	105 gal.	32 gal.	50,000 Btu	Cont.
2007 EXDP 4510	44' 11"	101.5"	12' 10"	95.5"	84"	65 gal.	45 gal.	105 gal.	32 gal.	50,000 Btu	Cont.
2007 EXDP 4511	44' 11"	101.5"	12' 10"	95.5"	84"	65 gal.	45 gal.	105 gal.	32 gal.	50,000 Btu	Cont.

## SPARTAN® CHASSIS INFORMATION

FLOORPLAN	ENGINE HP	AXLE RATIO	FUEL CAP.	WHEEL BASE	FRONT GAWR*	REAR GAWR*	TAG GAWR	GVWR*	GCWR*	APP. UVW	APP. NCC
2007 EXDP 4103	500	4.33	150 gal.	248"+TAG	16,000 lb.	20,000 lb.	10,000 lb.	46,000 lb.	61,000 lb.	37,750 lb.	8,250 lb.
2007 EXDP 4104	500	4.33	150 gal.	248"+TAG	16,000 lb.	20,000 lb.	10,000 lb.	46,000 lb.	61,000 lb.	37,700 lb.	8,300 lb.
2007 EXDP 4502	500	4.33	150 gal.	296"+TAG	16,000 lb.	20,000 lb.	10,000 lb.	46,000 lb.	61,000 lb.	39,500 lb.	6,500 lb.
2007 EXDP 4508	500	4.33	150 gal.	296"+TAG	16,000 lb.	20,000 lb.	10,000 lb.	46,000 lb.	61,000 lb.	38,750 lb.	7,250 lb.
2007 EXDP 4510	500	4.33	150 gal.	296"+TAG	16,000 lb.	20,000 lb.	10,000 lb.	46,000 lb.	61,000 lb.	39,350 lb.	6,650 lb.
2007 EXDP 4511	500	4.33	150 gal.	296"+TAG	16,000 lb.	20,000 lb.	10,000 lb.	46,000 lb.	61,000 lb.	38,150 lb.	7,850 lb.

Lengths, heights, widths and dry weights are approximate. Weight will vary based on optional equipment added to the above base weight.

**GAWR:** Gross Axle Weight Rating is the maximum permissible weight for an axle.

**GVWR:** Gross Vehicle Weight Rating is the maximum permissible weight for a fully loaded motor coach.

**GCWR:** Gross Combination Weight Rating is the value specified by the manufacturer of the vehicle as the maximum allowable loaded weight of this motor coach and any towed trailer or towed vehicle.

**UVW:** Unloaded Vehicle Weight is the weight of this motor coach as built at the factory with full fuel, engine oil and coolants. The UVW does not include cargo, fresh water, LP gas or dealer-installed accessories.

**NCC:** Net Carrying Capacity is the maximum weight of all occupants, including the driver, personal belongings, food, fresh water, waste water, LP gas, tools, tongue weight of the towed vehicle, dealer-installed accessories, etc., that can be carried by the motor coach.

\*Specifications supplied by the chassis manufacturer.

### Spartan® K2 Chassis

The K2 chassis has set the standard in the marketplace for its strength and power. It is equipped with a powerful Cummins® 500 horsepower ISM engine, plus a brawny 16,000 lb. IFS (Independent Front Suspension). The K2 chassis allows you to pass other drivers on a steep incline with ease. And, the K2 will allow you to maneuver the motor coach like a pro. Handle tight turns with perfect precision. Nothing can get in your way when you are equipped with a Spartan K2 under your coach. For peace of mind, there is a roadside assistance program for its entire warranty period.





355 North Delaware Street • P.O. Box 30 • Nappanee, Indiana 46550-0030

P: 574.773.7791 F: 574.773.2895

[www.Newmarcorp.com](http://www.Newmarcorp.com)



WHEN YOU KNOW THE DIFFERENCE™

Some features shown in our literature are optional. Colors and finishes are photographic representations. The actual materials may look different. Prices, specifications and floorplans are subject to change at Newmar's discretion, without prior notice or obligation. Please see your dealer for actual samples and specifications. ©2006 Newmar Corporation. Printed in the U.S.A. (04/06)