



WESTERN
WILDERNESS®

FROM NORTHWESTERN RECREATIONAL INDUSTRIES, INC., YAKIMA, WA

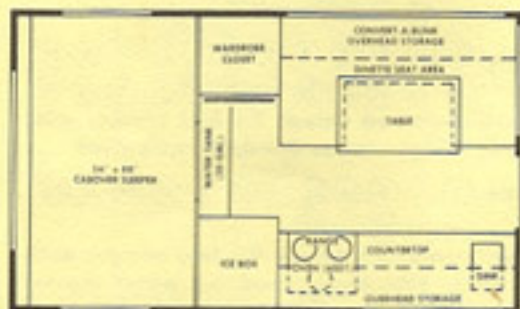
WHOLESALE
TRAVEL SALES

Lynden, Wash. 98264

Phone 354-4477



ECONOMY 8-FOOT AND 6 1/2-FOOT FLOOR-PLANS



Model 6000: 8-foot economy camper for long wheel base domestic trucks.

Options available: ① ⑤ ⑥ ⑦ ⑩ ⑪ ⑫ ⑬ ⑮ ⑯ ⑰ ⑱ ⑳
㉑ ㉒ ㉓ ㉔ ㉕ ㉖ ㉗ ㉘ ㉙ ㉚ ㉛ ㉜ ㉝ ㉞

Dry Scale Weight: 6000 — 1,240

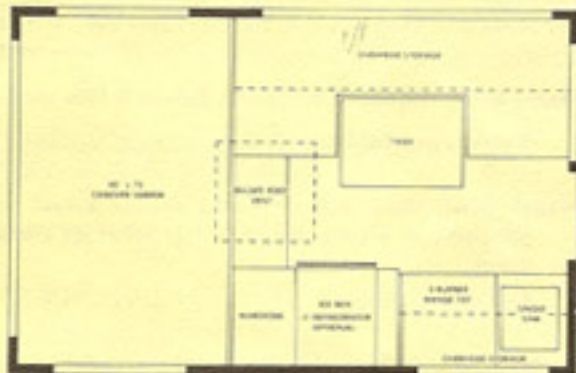
6 1/2-foot for short wheel base domestic trucks and 6 1/2-foot for import trucks. (Also available in stretched version for longer box import trucks.)

Model 5001: 6 1/2-foot economy camper for short box imported trucks.

Model 5001LWB: 7 1/2-foot economy camper for long box imported trucks.

Model 5050: 6 1/2-foot economy camper for short wheel base domestic truck.

Options available: ① ④ ⑥ ⑦ ⑩ ⑪ ⑫ ⑬ ⑮ ⑯ ⑰ ⑱ ⑳ ㉑
㉒ ㉓ ㉔ ㉕ ㉖ ㉗ ㉘ ㉙ ㉚ ㉛ ㉜ ㉝ ㉞
㉟ ㊱ ㊲ ㊳ ㊴



DRY SCALE WT.: 5001 — 815; 5050 — 830

OTHER QUALITY "WESTERN WILDERNESS" PRODUCTS



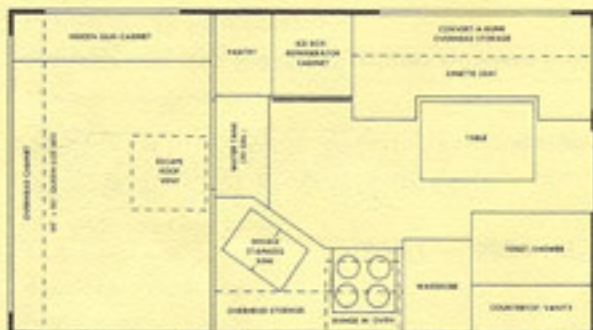
CANOPIES FOR DOMESTIC & IMPORT TRUCK



MINI MOTOR HOMES

Because of continuous, progressive product improvement, all specifications and descriptions contained herein are subject to change without prior notice.

DELUXE 8-FOOT AND 9½-FOOT FLOOR-PLANS



DRY SCALE WT.: 9500 — 1,758; 9501 — 1,880; 9502 — 1,960

Model 9500: Standard equipped deluxe 9½-foot camper.

Options available: 2 3 5 7 8 9 10 11 12 14 17 18
19 20 21 24 25 26 28 30 31 32 34 36

Model 9501: Mini self-contained deluxe 9½-foot camper with furnace, toilet and refrigerator as standard equipment.

Options available: 3 7 8 14 17 18 19 20 21 24 25 26
30 31 32 34 36

Model 9502: Fully self-contained deluxe 9½-foot camper with furnace, toilet, refrigerator, power hood, hot water, shower as standard equipment.

Options available: 3 8 18 19 20 21 24 25 26 30 31 32
34 36

Model 8000: Standard equipped deluxe 8-foot camper.

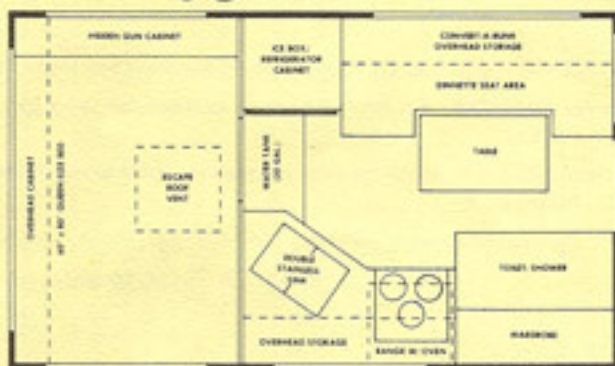
Options available: 1 2 5 7 8 10 11 12 17 18 19 20
21 23 24 25 26 30 31 32 34 36

Model 8001: Mini self-contained deluxe 8-foot camper with plumbed-in electric recirculating toilet as standard equipment.

Options available: 1 2 5 7 11 12 17 18 19 20 21 23
24 25 26 28 31 32 34 36

Model 8002: Fully self-contained deluxe 8-foot camper with furnace, toilet, refrigerator, hot water and shower as standard equipment.

Options available: 2 7 8 17 18 19 20 21 23 24 25 26
30 31 32 34 36

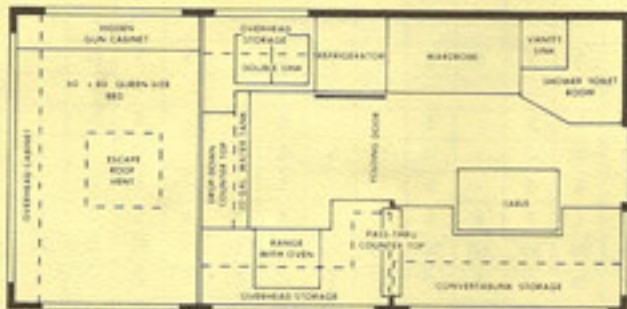


DRY SCALE WT.: 8000 — 1,575; 8001 — 1,590; 8002 — 1,755

KEY TO OPTIONS AVAILABLE

- | | | |
|---|---|---|
| ① 3 cu. ft. gas/electric refrigerator | ⑫ Shurflo large water pump, demand system | ⑳ Reinforced roof, complete roof |
| ② 4 cu. ft. gas/electric refrigerator | ⑬ Zenith small water pump, on-off system | ㉑ Roof rack and ladder (includes option 24 as standard) |
| ③ 6 cu. ft. gas/electric refrigerator | ⑭ Hot water system, 6 gallon | ㉒ Wheel well access door |
| ④ 6,000 BTU furnace with bulb thermostat | ⑮ City water system | ㉓ Dual LPG tanks with pigtailed |
| ⑤ 12,000 BTU furnace with wall thermostat and fan | ⑯ 110 volt electrical system | ㉔ Rear access baggage door |
| ⑥ 3-burner range top with oven | ⑰ Power range hood with light | ㉕ Coleman 12 volt roof air cooler |
| ⑦ 4-burner range top with oven & top liter | ⑱ Slider window to pickup truck cab | ㉖ Wired for 110 volt air conditioner |
| ⑧ Jensen 747E recirculating toilet | ㉒ Tinted radius (bus-style) windows | ㉗ Wired and plumbed for roof air cooler |
| ⑨ Thetford Aquamagic marine toilet | ㉓ Removable storm windows | ㉘ Battery compartment |
| ⑩ Thetford Port-a-pottie | ㉔ Convertible overhead bunk pads with board | ㉙ Hydraulic jacks |
| ⑪ "Detachable" 14 gal. waste water holding tank | ㉕ Vanity sink in toilet room | ㉚ Insulated camper floor |
| | ㉖ Battery operated wall clock | ㉛ Factory installation |
| | ㉗ Reinforced roof, 8' from back to front | |

DELUXE 10-FOOT AND 11-FOOT FLOOR-PLANS



DRY SCALE WT.: 11100 — 1,940; 11101 — 2,085; 11102 — 2,165

Model 11100: Standard equipped deluxe 11-foot camper.

Options available: 2 3 5 7 8 9 10 12 14 17 18 19 20 21
24 25 26 28 30 31 32 33 34 36

Model 11101: Mini self-contained deluxe 11-foot camper with furnace, toilet and refrigerator as standard equipment.

Options available: 3 7 8 14 17 18 19 20 21 24 25 26 30 31
32 33 34 36

Model 11102: Fully self-contained deluxe 11-foot camper with furnace, toilet, refrigerator, power hood, hot water, shower as standard equipment.

Options available: 3 8 18 19 20 21 24 25 26 30 31 32 33 34
36

Model 10000: Standard equipped deluxe 10-foot camper.

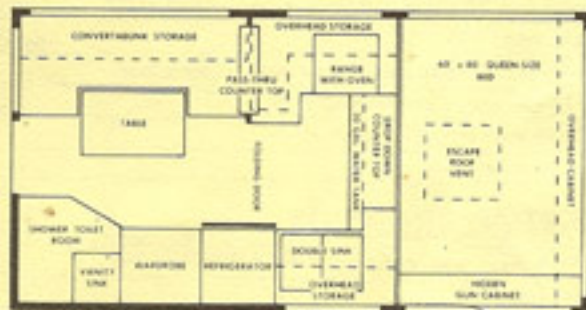
Options available: 2 3 5 7 8 9 10 11 12 14 17 18 19
20 21 24 25 26 28 30 31 32 33 34 36

Model 10001: Mini self-contained deluxe 10-foot camper with furnace, toilet and refrigerator as standard equipment.

Options available: 3 7 8 11 14 17 18 19 20 21 24 25 26
30 31 32 33 34 36

Model 10002: Fully self-contained deluxe 10-foot camper with furnace, toilet, refrigerator, power hood, hot water, shower as standard equipment.

Options available: 3 8 18 19 20 21 24 25 26 30 31 32 33
34 36



DRY SCALE WT.: 10000 — 1,833; 10001 — 1,960; 10002 — 2,040

LIMITED WARRANTY

Under the terms for the Magnuson-Moss (Federal Warranty Act) Western Recreational Vehicles, Inc., manufacturer of "Western Wilderness" brand recreational vehicles states that their warranty is "limited."

Please see the complete warranty available at each authorized Western Wilderness dealer. In brief, the warranty covers:

1. Defects in materials and components manufactured by Western Recreational Vehicles, Inc.
2. Improper installation either of components manufactured or purchased by Western Recreational Vehicles, Inc.
3. Water leaks for a period of one year provided the leak is caused by faulty installation or defective material.
4. It covers items 1 and 2 above as long as the unit is owned by the original purchaser — "lifetime."

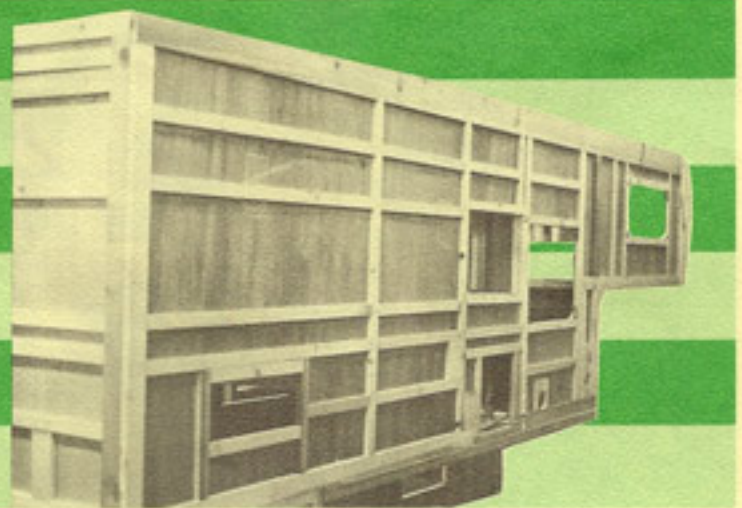
The warranty does not cover: damages to product caused by an accident involving the vehicle; product failure caused by improper installation or servicing; product failure caused by negligence; product failure caused by customer misuse; damage or product failure caused by freezing, flooding, fire or any occurrence that might be termed an Act of God.

Any and all warranty claims must be made to or through your authorized Western Wilderness dealer.

WHOLESA
TRAVEL SAL
Lynden, Wash. 982
Phone 354-4477

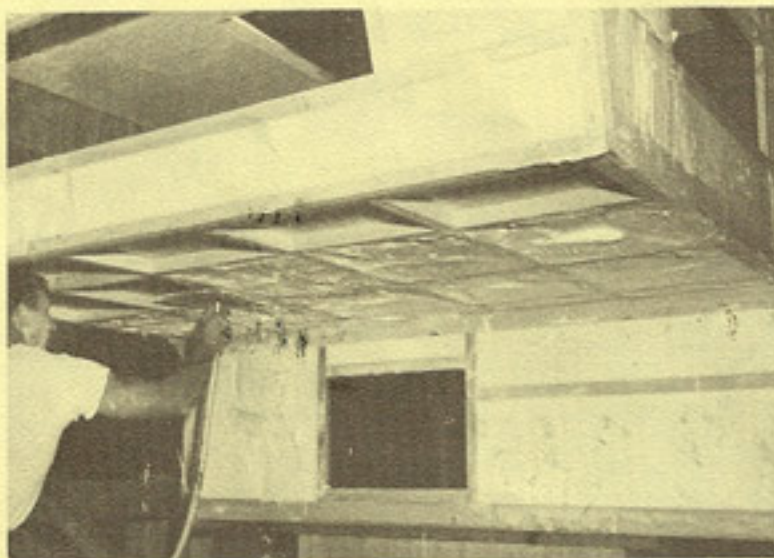
QUALITY CONSTRUCTION FEATURES

QUALITY MATERIALS FABRICATED
BY EXPERIENCED CRAFTSMEN
AND BACKED BY OUR
"LIMITED" LIFETIME WARRANTY



MODEL

QUALITY CONSTRUCTION FEATURES	5001	5001-LWB	5050	6000	8000	8001	8002	9500	9501	9502	10000	10001	10002	11100	11101	11102
Double constructed, INSULATED floor	O	O	O	O	S	S	S	S	S	S	S	S	S	S	S	S
"ARCTIC" foam and fiberglass insulation	S	S	S	S	S	S	S	S	S	S	S	S	S	S	S	S
Insulated verticle offset sides	S	S	S	S	S	S	S	S	S	S	S	S	S	S	S	S
2" x 2" ceiling, floor, sleeper floor	S	S	S	S	S	S	S	S	S	S	S	S	S	S	S	S
Marine-type plywood, exterior undercoated	S	S	S	S	S	S	S	S	S	S	S	S	S	S	S	S
Mar-resistant walnut interior panel	S	S	S	S	S	S	S	S	S	S	S	S	S	S	S	S
Factory finished exterior aluminum	S	S	S	S	S	S	S	S	S	S	S	S	S	S	S	S
Screwed, stapled, nailed, glued construction	S	S	S	S	S	S	S	S	S	S	S	S	S	S	S	S
Washable ceiling vinyl	S	S	S	S	S	S	S	S	S	S	S	S	S	S	S	S



FLOOR, SLEEPER, VERTICLE OFFSETS, WALLS FEATURE

"KEY" FOAM INSULATION. "KEY" FOAM
PROPERTIES ARE:

Thermo Conductivity: K factor 0.20 to 70° F.

Thermo Resistance: R factor per inch of thick-
ness: 5.0 at 75° Mean.

Sound Resistance: Reduces sound transmission.

Dimensional Stability: Unaffected by heat, cold or
moisture.

Fire Behavior: ASTM E84 — Flame spread . . . 15
Smoke density . . 35
Fuel contributed . 10

QUALITY APPOINTMENT FEATURES

COOKING FEATURES

	5001	5001-LWB	5050	6000	8000	8001	8002	9500	9501	9502	10000	10001	10002	11100	11101	11102
3-burner range top (no oven)	S	S	S	S	-	-	-	-	-	-	-	-	-	-	-	-
3-burner range top with oven	O	O	O	O	S	S	S	S	S	-	S	S	-	S	S	-
4-burner range top with liter and oven	O	O	O	O	O	O	O	O	O	S	O	O	S	O	O	S
Power range hood with lite	O	O	O	O	O	O	O	O	O	S	O	O	S	O	O	S
50-lb. ice box	S	S	S	-	-	-	-	-	-	-	-	-	-	-	-	-
75-lb. ice box	-	-	-	S	S	S	-	S	-	-	S	-	-	S	-	-
4 cu. ft., gas/electric refrigerator <i>INSTAMATIC IMA</i>	-	-	-	-	O	O	O	O	S	S	O	S	S	O	S	S

ELECTRICAL FEATURES

Converter-type electrical system	-	-	-	-	S	S	S	S	S	S	S	S	S	S	S	S
110 volt electrical outlets	O	O	O	O	S	S	S	S	S	S	S	S	S	S	S	S

PLUMBING FEATURES

Double stainless steel kitchen sink	-	-	-	O	S	S	S	S	S	S	S	S	S	S	S	S
Single stainless steel kitchen sink	S	S	S	S	-	-	-	-	-	-	-	-	-	-	-	-
"On-off" switch (small) water pump	O	O	O	O	S	S	-	S	-	-	S	-	-	S	-	-
Demand-type (large) pressure water pump	O	O	O	O	O	O	S	O	S	S	O	S	S	O	S	S
Rocker-arm hand pump	S	S	S	S	S	S	-	S	-	-	S	-	-	S	-	-
City water inlet and faucet	O	O	O	O	S	S	S	S	S	S	S	S	S	S	S	S
Fresh water tank gallonage	13	13	13	30	30	30	30	30	30	30	30	30	30	30	30	30
6-gallon hot water tank	-	-	-	-	O	O	S	O	O	S	O	O	S	O	O	S
Dual 5-gallon LPG tanks	-	-	-	-	-	-	-	O	S	S	O	S	S	O	S	S
Access to all plumbing and gas fittings	S	S	S	S	S	S	S	S	S	S	S	S	S	S	S	S
Electric recirculating toilet	-	-	-	-	O	S	O	O	O	O	O	O	O	O	O	O
Electric recirculating toilet w/10-gal. holding tank	-	-	-	-	O	O	S	-	-	-	-	-	-	-	-	-
Marine toilet with 26-gal. holding tank	-	-	-	-	-	-	-	-	-	-	-	-	-	O	S	S
Marine toilet with 33-gal. waste/grey water holding tank (26-gal. early '77)	-	-	-	-	-	-	-	-	-	-	O	S	S	-	-	-
Marine toilet with 18-gal. waste/grey water holding tank	-	-	-	-	-	-	-	O	S	S	-	-	-	-	-	-
Separate 24-gal. grey water holding tank	-	-	-	-	-	-	-	-	-	-	-	-	-	S	S	S
Sink water by-pass of holding tank	-	-	-	-	-	-	S	-	S	S	-	S	S	-	-	-
Vanity sink in toilet room	-	-	-	-	-	-	-	-	S	S	-	S	S	-	S	S

COMFORT APPOINTMENTS

12,000 BTU furnace with wall thermostat & fan	-	-	-	O	O	O	S	O	S	S	O	S	S	O	S	S
Screen door entry door	-	-	-	-	S	S	S	S	S	S	S	S	S	S	S	S
Convertible overhead for bunk (pads opt.)	-	-	-	S	S	S	S	S	S	S	S	S	S	S	S	S
Positive catches on all doors	S	S	S	S	S	S	S	S	S	S	S	S	S	S	S	S
Queen-size (60" x 80") cabover bed	-	-	-	-	S	S	S	S	S	S	S	S	S	S	S	S
Double-size (54" x 76") cabover bed	-	-	-	S	-	-	-	-	-	-	-	-	-	-	-	-
Double-size (48" x 74") cabover bed	S	S	S	-	-	-	-	-	-	-	-	-	-	-	-	-
Battery operated wall clock	O	O	O	O	O	O	O	S	S	S	S	S	S	S	S	S
Access to all available truck wheelwells	O	O	O	O	S	S	S	S	S	S	S	S	S	S	S	S
Storm window on front facing window	O	O	O	O	S	S	S	S	S	S	S	S	S	S	S	S
18" high torque-type opening window	-	-	-	-	S	S	S	S	S	S	S	S	S	S	S	S
15" slider-type opening windows	S	S	S	S	-	-	-	-	-	-	-	-	-	-	-	-

SAFETY APPOINTMENTS

Roof vent escape hatch (22" x 22")	S	S	S	S	S	S	S	S	S	S	S	S	S	S	S	S
Fire extinguisher	S	S	S	S	S	S	S	S	S	S	S	S	S	S	S	S
Fire retardant wall panel	S	S	S	S	S	S	S	S	S	S	S	S	S	S	S	S

Key: S : Standard; O : Optional; - : Not available