

# Forester

BY FOREST RIVER

*Where Luxury Meets Affordability.*



# Forester

Many of Forester's amenities are clearly seen, yet it is the details that really set the Forester apart. Features include high-gloss fiberglass exterior, fiberglass roof, 15K BTU ducted A/C, soft touch ceilings, cedar-lined wardrobes — not to mention premium grade fabrics and carpeting. Take a closer look at Forester Class C!





## The New 3121DS

The 3121DS slide-out master bedroom (shown left) features both a large wardrobe and a vanity. The bedroom also offers a large panoramic window and private entrance to the bathroom.

The dual entry bathroom features a spacious garden shower, a porcelain toilet with extra legroom and a linen closet. Finally, a master bathroom that lives up to its name.



The 3121DS kitchen not only features a dual deep bowl sink with residential faucet, but six doors, four drawers and an oversize pantry to carry all of your cooking cargo. The 3121DS also gives you more exterior storage than any similar floorplan.



# Forester

## More than Meets the Eye.

It's easy to get caught up in the Forester's great interior looks, but don't stop there. New for this year, the Forester includes a "Dream Dinette." With the flip of a lever, this innovative table top lowers into our exclusive "fold flat" bed position with ease.



## Indoor / Outdoor T.V.

The available "Home Theater" option allows the maximum in entertainment versatility. The removable 23" LCD TV easily transfers from the front entertainment center to the outside TV mount. So whether you're watching the game under the awning or enjoying a quiet movie in the comfort of your coach, the Forester has you covered.



## 2861DS

Take note, the moment you step into a Forester, of the spacious interior design. With full 7' ceilings allowing a residential feel with the practicality of increased storage space. Notice too, our low step down from the living area to the cab for ease of movement throughout and offering all passengers a "First Class" view of the road ahead.

## Storage for Everything

No need to give up the comforts of a master bath while traveling. The highlight of our 3161S and the "New" 3121DS floorplans is a spacious open bath. The neo-angle shower has plenty of room, a large entry door and a built-in seat — all designed with your comfort in mind.



# Forester

## Floorplans

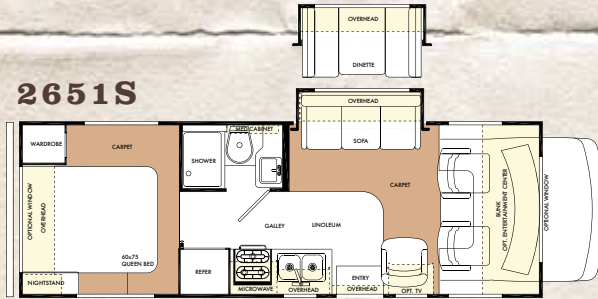


A Cherry  
B Maple

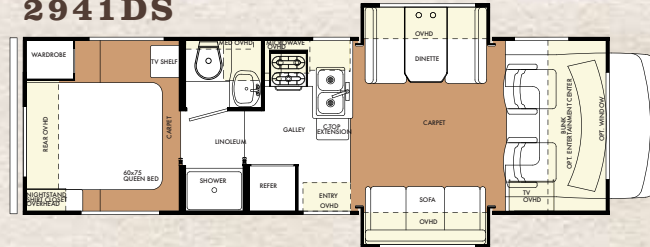


Forest River, Inc., in affiliation with Coach Net®, is providing one 1 year of free Roadside Assistance to all retail purchasers of new Forester models. This is just one more way to say "Thank You" and to ensure you have an enjoyable rv-ing experience.

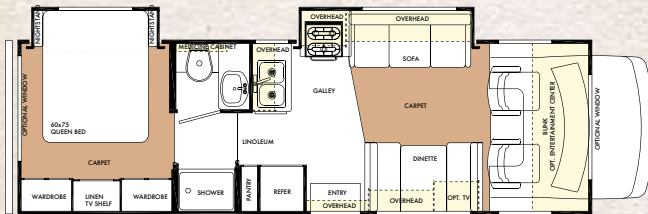
**2651S**



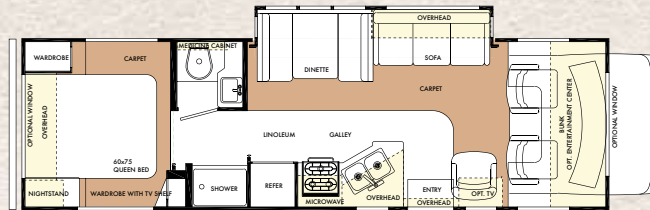
**2941DS**



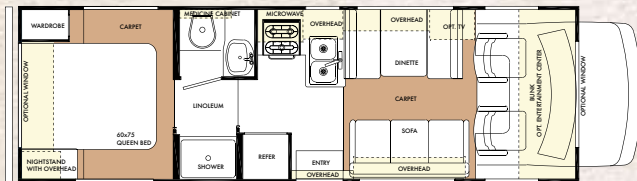
**2861DS**



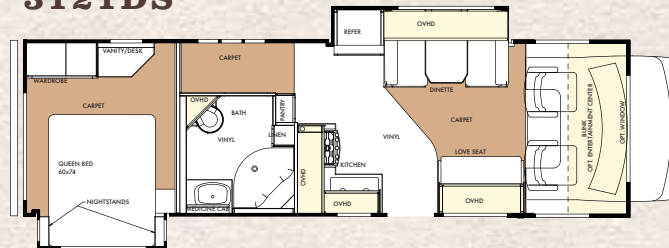
**3101SS**



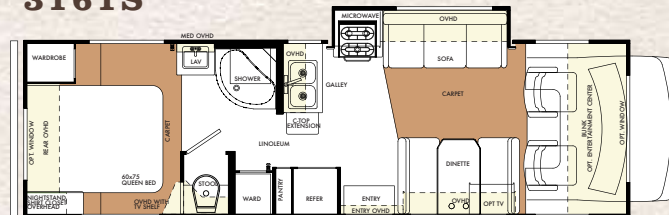
**2901**



**3121DS**



**3161S**





**Cabernet**

**Hazlenut**

**Bahama Blue**

**Fiesta Green**



**Pale Jade Exterior**

**Champagne Exterior**

**Platinum Exterior**

**Specifications**

<b>FORD CHASSIS</b>	<b>2651S</b>	<b>2861DS</b>	<b>2901</b>	<b>2941DS</b>	<b>3101SS</b>	<b>3161S</b>	<b>3121DS</b>
WHEELBASE	188"	202"	188"	198"	220"	212"	212"
GVWR	14050	14050	14050	14050	14050	14050	14050
GAWRR	9450	9450	9450	9450	9450	9450	9450
GAWRF	4600	4600	4600	4600	4600	4600	4600
UVW	11660	12630	11440	12775	12740	12510	12870
GCWR	20000	20000	20000	20000	20000	20000	20000
NCC	2390	1420	2610	1275	1310	1540	1180
FUEL CAPACITY (gal)	55	55	55	55	55	55	55
DIESEL ENGINE OPTION	NA	NA	YES	NA	NA	NA	NA

<b>CAPACITIES &amp; DIMENSIONS</b>	<b>2651S</b>	<b>2861DS</b>	<b>2901</b>	<b>2941DS</b>	<b>3101SS</b>	<b>3161S</b>	<b>3121DS</b>
LENGTH	27'-7"	30'-4"	29'-9"	30'-6"	31'-8"	31'-5"	31'-5"
EXTERIOR HEIGHT WITH A/C	11'-6"	11'-6"	11'-6"	11'-6"	11'-6"	11'-6"	11'-6"
EXTERIOR WIDTH	101"	101"	101"	101"	101"	101"	101"
INTERIOR WIDTH	96"	96"	96"	96"	96"	96"	96"
INTERIOR HEIGHT	84"	84"	84"	84"	84"	84"	84"
FRESH WATER (gal)	38	44	40	40	40	40	40
GRAY WATER (gal)	27	47	47	35	47	35	30
BLACK WATER (gal)	27	27	27	35	27	35	30
L.P. CAPACITY (gal)	9.8	9.8	9.8	9.8	9.8	9.8	9.8
AWNING LENGTH	14	16	14	16	16	16	15
WATER HEATER (gal)	6	6	6	6	6	6	6

## Standards & Optional Features

### Warranty: Standard Features

- 12 Months / 12,000 miles basic limited warranty
- 3 Years / 36,000 miles chassis warranty

### Systems: Standard Features

- Battery disconnect
- Water heater bypass kit
- (2) Deep cycle 12V coach batteries
- 30 amp, 120 Volt distribution panel & 30' power cord
- 55 amp, 12 Volt power converter
- 6 gallon gas/electric electronic ignition DSI water heater
- 30,000 BTU electronic ignition furnace
- Artic package (cold weather package)
- Remote emergency start
- Cable / TV phone jacks
- 15.0 BTU ducted roof air conditioner
- Generator auto transfer switch

### Optional Features

- 4.0 Onan generator
- 40G Guardian generator
- Water purification system
- King Dome automatic satellite system
- Trac-King in-motion satellite

### Exterior: Standard Features

- 2" laminated Gel-coat sidewalls, vacuum bonded with aluminum frame structure, steel backers & block foam insulation
- A & E slide-out awnings
- All radius-style exterior doors
- Entry door with screen door & dead bolt door lock
- Lockable rotocast pass through storage compartments with lights
- Patio light
- 110 Volt, GFI protected exterior recept

- Entry assist handle
- "Easy-Dump" valve dump stations
- "Easy-Fill" exterior water fill stations
- Entry step light
- Chrome hub caps
- Tinted sliding windows
- Fiberglass running boards
- Exterior security light
- 5,000 lb. Tow hitch with 7-pin connector
- Deluxe A & E Awning
- Outside shower
- Fiberglass roof
- Slide-out battery tray

### Optional Features

- 3 exterior paint packages
- Deluxe break away heated/remote mirrors
- Cab over bunk window
- Electric entry step
- Stainless steel wheel liners
- Spare tire
- Roof ladder
- A & E electric awning w/ metal wrap

### Cab Area: Standard Features

- Deluxe wood grain dash
- AM/FM CD player
- Upgraded driver & passenger seats w/ lumbar support
- Cab area privacy curtains
- Dual 12 Volt power points
- Cruise control
- Power windows & locks

### Optional Features

- Back-up camera with monitor

### Galley Area: Standard Features

- Sink cover
- Single lever chrome faucet
- Three burner range with oven

- Flush mount two door refrigerator/freezer w/ brushed nickel fronts
- Solid surface edge countertops
- Range hood with fan & light with bi-fold range cover
- Residential style drawer construction with solid wood fronts, metal guides and positive latches
- Microwave oven
- Flip up counter top extensions

### Optional Features

- Raised wood refrigerator door panels

### Bathroom Area: Standard Features

- Large medicine cabinet with mirrored cabinet doors
- Deep sink with dual control faucet
- Porcelain toilet
- Frosted glass shower door with heavy duty nickle frame
- Raised 6-panel door
- Solid surface edged countertops
- Brushed nickel bath amenity package (towel bar, tissue, tooth brush, & soap holder)
- Electric roof vent fan
- Wall mount mirror
- Molded ABS shower pan & surround
- Shower head with flexible hose extension
- Shower sky light
- Light switch

### Bedroom Area: Standard Features

- Innerspring mattresses
- Bedspread with pillow shams
- TV shelf with AC receptacle & cable TV jacks
- Adjustable brushed nickel reading lights

- Day/Night shades with upscale window treatments
- Bedroom stereo speaker package
- Bi-fold privacy door
- Light switch
- Rear bedroom window

### Optional Features

- Twin beds with innerspring mattresses (NA on 2861 DS or 3121DS)
- Bunk beds with innerspring mattresses (NA on 2861 DS or 3121DS)
- 15" Flat panel TV

### Living Room Area: Standard Features

- "Soft touch" vinyl padded ceilings with ducted air
- Cherry or maple wood cabinetry throughout with raised panel doors and hidden hinges
- Brushed nickel grab handles & hinges
- 2-way sofa with convertible sleeping w/ high rub fabrics
- Day / Night shades with deluxe window treatments
- Upgraded glass light fixtures
- 7' ceiling height
- Fantastic roof vent
- Light switch

### Optional Features

- Cab over entertainment center with 24" flatscreen TV
- 19" Flat panel TV w/ DVD
- 450 watt inverter
- Vinyl floor throughout in place of carpet
- Leather sofa
- DVD with premium surround sound
- 23" Flatpanel LCD TV with DVD, surround sound and exterior hook-up

Your Forester Dealer



Forest River, Inc. 914 C.R. 1 Elkhart, IN 46514  
574.262.2212 800.445.2825 [www.forestriverinc.com](http://www.forestriverinc.com)  
[www.forestriveraccessories.com](http://www.forestriveraccessories.com)

All specifications contained herein are based on the latest product information at time of printing. Forest River reserves the right to make changes in colors, materials, equipment and specifications at any time without notice and assumes no responsibility for any errors in this brochure.