

2002 IMPERIAL™

IT'S TIME FOR THE DRIVE OF YOUR LIFE



HOLIDAY RAMBLER®

This is Living®






WITH IT'S ONE-PIECE WINDSHIELD, POLISHED STAINLESS STEEL BUMPER, FRONT FIBERGLASS CAP AND DRAMATIC PAINTED EXTERIOR GRAPHICS, THE 2002 IMPERIAL IS MORE UPSCALE AND ELEGANT THAN EVER BEFORE.



2 0 0 2



D E R I A I



A BEAUTY TO BEHOLD.

Succulent steaks on fine china. Vintage cabernet sauvignon in crystal goblets. The setting sun in the window. And pleasant conversation with old friends in a most graciously appointed room. Welcome to a motorhome that's the perfect setting for your ultimate pleasures. At Holiday Rambler, we call it Imperial. The coach is appointed with the best hardwood cabinets to be found in motor coaches. The most lavish interiors. And the finest entertainment equipment. What's more, because it's built on Monaco Coach Corporation's Roadmaster Semi-Monocoque chassis, you get the best ride and handling available in a motor coach. **Come on aboard.**



WITH DEEP, RICH COLORS, BOLD GRAPHICS
AND SOPHISTICATED STYLING, THE 2002
IMPERIAL SETS YOU APART FROM THE CROWD.
STANDARD FULL-BODY PAINT DELIVERS AN
EVEN HIGHER LEVEL OF REFINEMENT.
STEP BACK AND ENJOY
THE VIEW.



ENGINEERED AND AP



SHOWN HERE, 40PKD WITH
SPLASH INTERIOR AND
STAINED OAK CABINETRY. THE
NEWLY DESIGNED LEGLESS
TABLE SLIDES IN AND OUT
WITH EASE FOR EXPANDED
DINING SPACE AND FLEXIBLE
SEATING. SEALED STOVE BURN-
ERS PROVIDE EASY CLEANUP
AND A SLEEK APPEARANCE.

POINTED TO PERFECTION.

A home theater system fit for a Hollywood premier. Furnishings and decor to go with the parties that follow. That's what you'll find in the 2002 Imperial. Because we spared nothing in luxury and sophistication when we appointed the coach. And it shows. From the premium electronic equipment to the liberally padded soft leather sofas, from the custom-built hardwood cabinets to the exquisite decor touches, you'll find Imperial a sheer delight to spend private moments. And a truly posh home to share with friends and acquaintances.





STAINED OAK (STD.)



NATURAL OAK (STD.)



NATURAL CHERRY



STAINED CHERRY



WALNUT



NATURAL MAPLE



The spacious bedroom features a queen size bed (king bed optional on some floorplans) with a bedroom slide-out, and a 19-inch color TV. Notice the wardrobe and dresser with solid surface top. The bathroom features a large medicine cabinet and abundant solid surface vanity countertop space, with a smooth, seamless integrated sink.





With all the standard and optional equipment available, Imperial enables you to customize your coach to fit your concept of the ultimate motorhome experience. Choose from six wood finishes. Five elegant decors. Ten delightfully livable floorplans. And optional features to embellish your coach from end to end. Imperial brings motorhome sophistication and enjoyment to a whole new level.

TAKE THE DRIVE OF

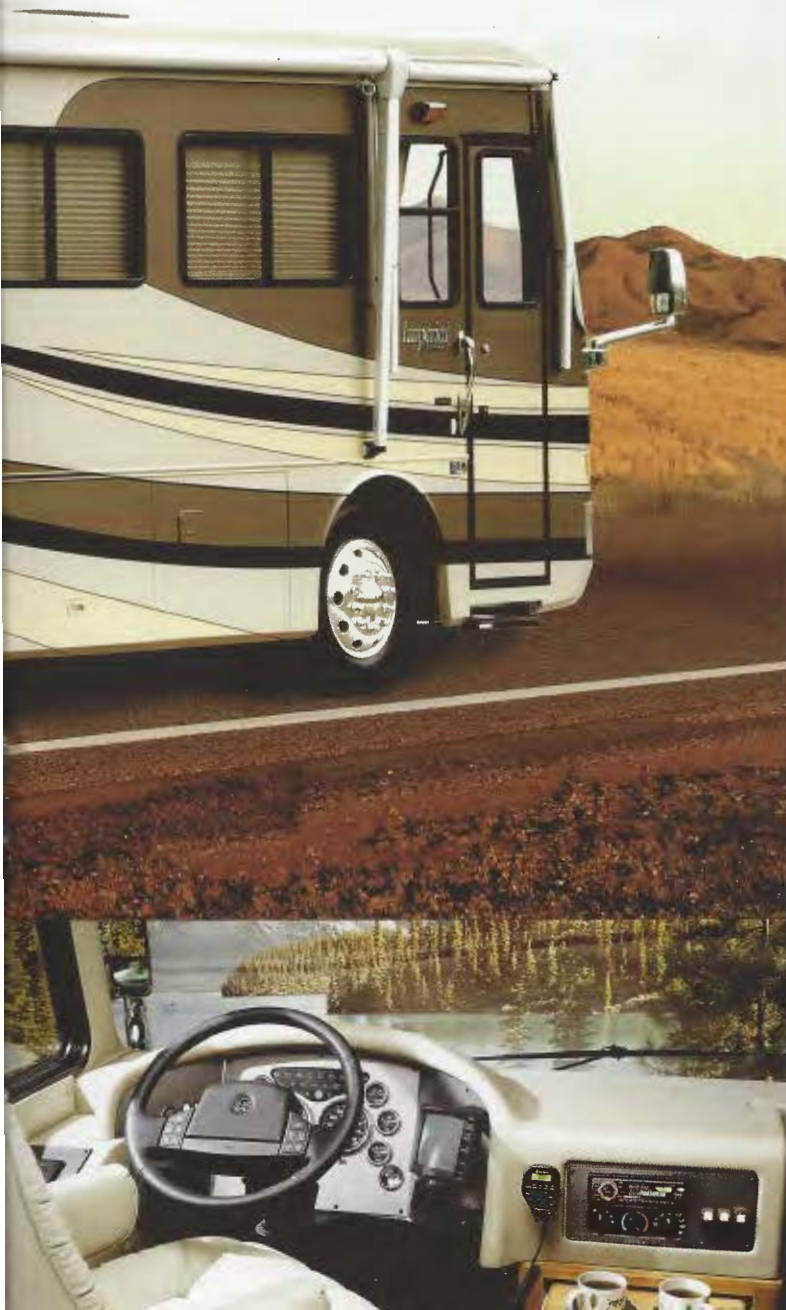


A cup of coffee in hand. Your laptop open on the table. And winding mountain roads outside. With Imperial, you can go wherever adventure beckons and enjoy the ride no matter the road surface. This is because Imperial rides on Monaco Coach Corporation's exclusive

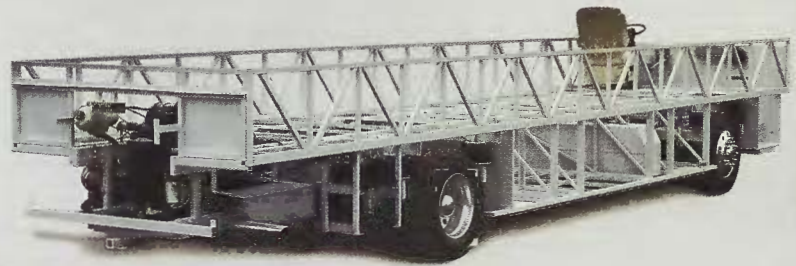
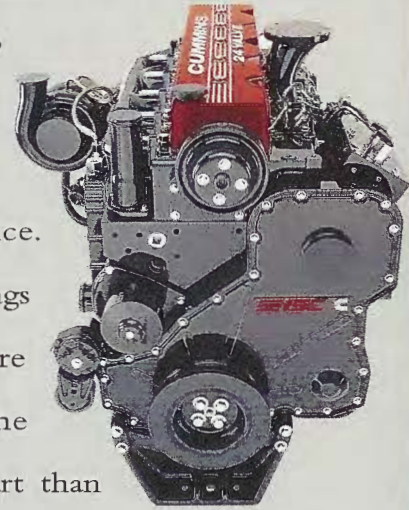
Roadmaster Semi-Monocoque chassis. It's the most sophisticated, refined and finely balanced chassis in the industry. Power adjustable pedals make driving comfortable for anyone.



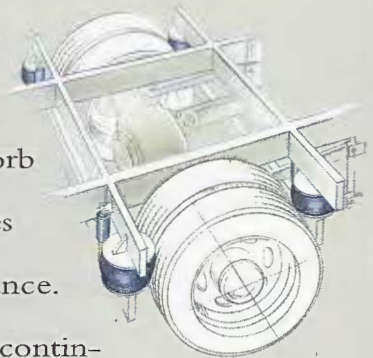
YOUR LIFE.



Imperial's Roadmaster Semi-Monocoque super-structure is a bridge-like, all-steel cage construction engineered to provide high stability, a smoother ride and superior front-to-rear balance. Outward mounted air bags and shock absorbers are placed in line with the wheels, much further apart than with any other chassis construction.



This results in increased control, especially on sharp corners. Smoother ride. The coach has eight air bags, each with its own gas shock absorber. An air bag and shock absorber is placed in front of and behind each wheel, to isolate wheel response and absorb road trauma before it reaches the coach. Superior balance.

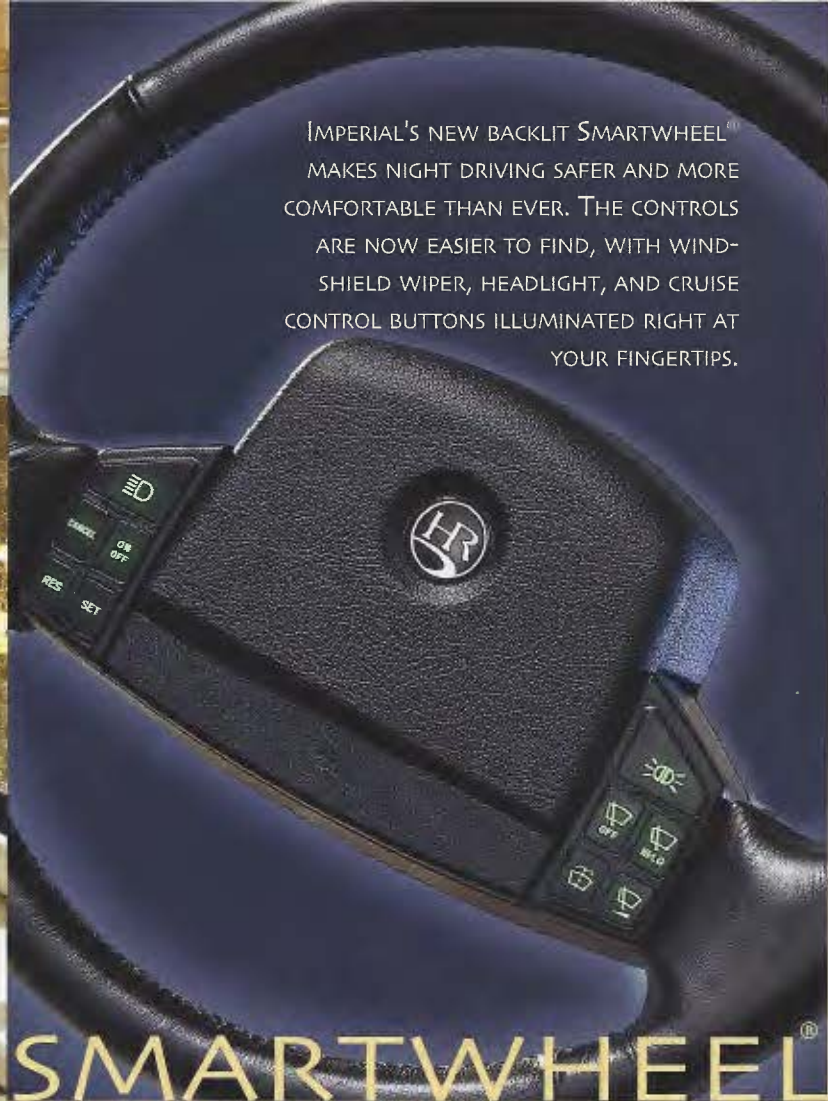


Monitored leveling sensors continuously adjust the air pressure at each axle to maintain a level ride. This prevents nose diving during hard braking, offsets weight transfer when cornering, eliminates wandering or floating on curves, and stabilizes the coach on uneven pavement.



SHOWN: 40PBD IN
SANDSTONE INTERIOR
WITH OPTIONAL LEATHER
SOFA AND NATURAL
CHERRY CABINETRY

**Panoramic views and graceful surroundings.
The Imperial has the amenities you've been
searching for. Raised-panel hardwood cabi-
netry in six finishes, built with practicality
and quality in mind. Comfortable furniture**



IMPERIAL'S NEW BACKLIT SMARTWHEEL[®] MAKES NIGHT DRIVING SAFER AND MORE COMFORTABLE THAN EVER. THE CONTROLS ARE NOW EASIER TO FIND, WITH WINDSHIELD WIPER, HEADLIGHT, AND CRUISE CONTROL BUTTONS ILLUMINATED RIGHT AT YOUR FINGERTIPS.



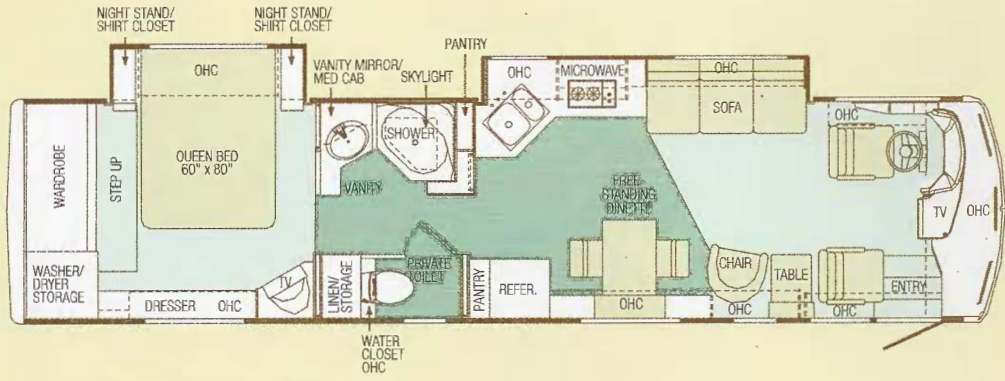
that is made for livability. Well-planned kitchens for a quick lunch or a fine feast. The new backlit Smartwheel[®] Provides convenience and safety when driving either day or night.

FLOORPLANS

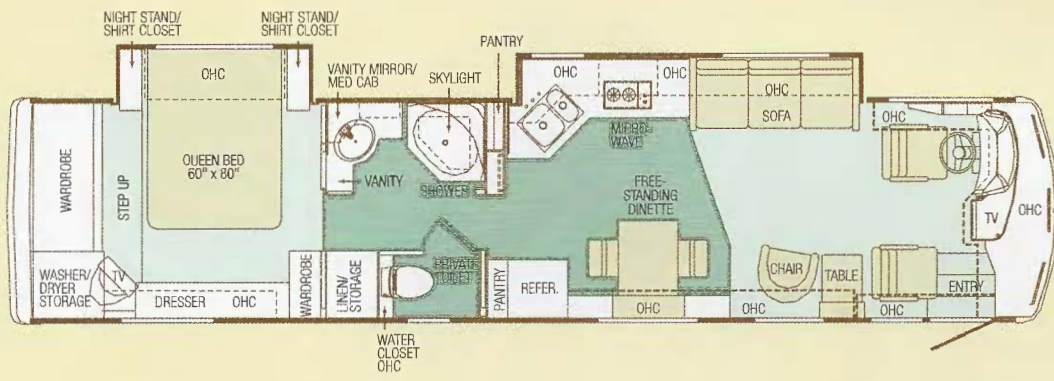
Carpet 

Tile 

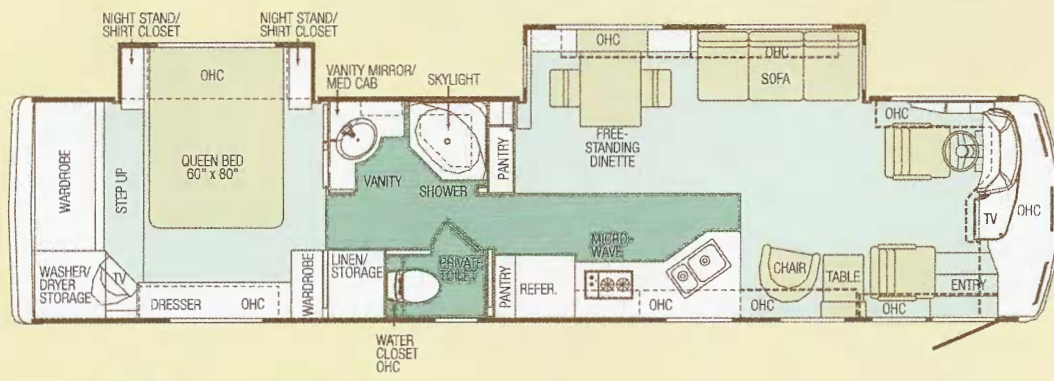
36PBD



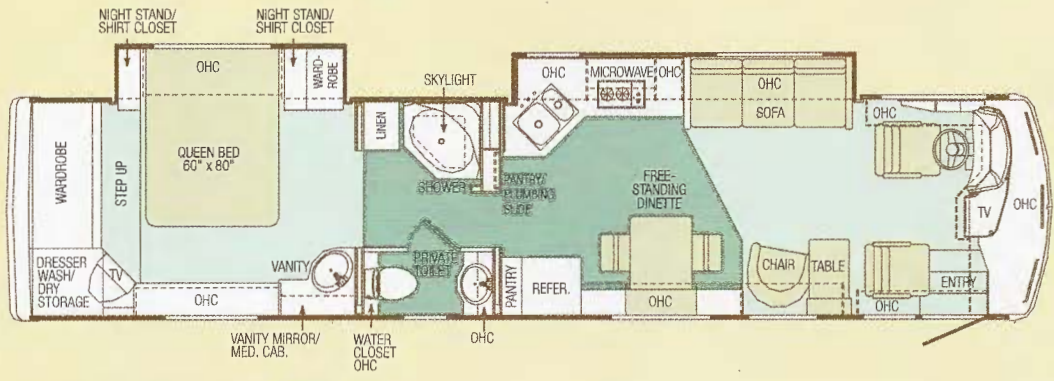
38PBD



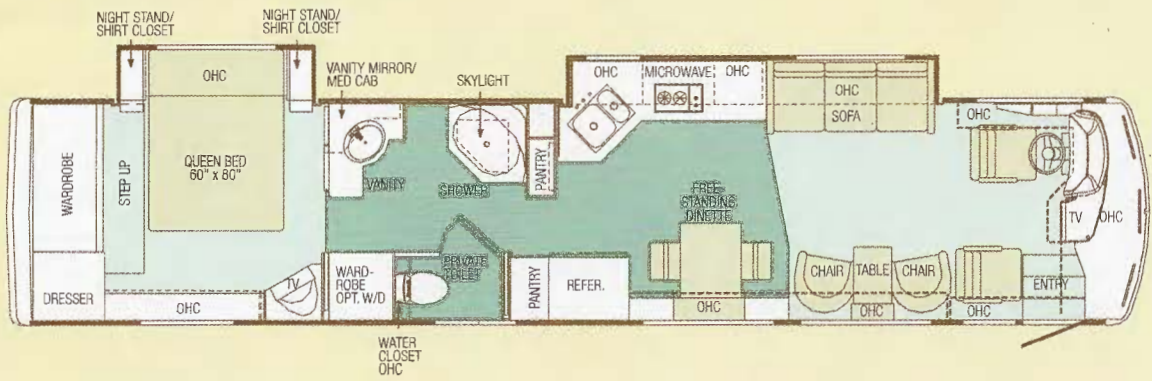
38PBDD

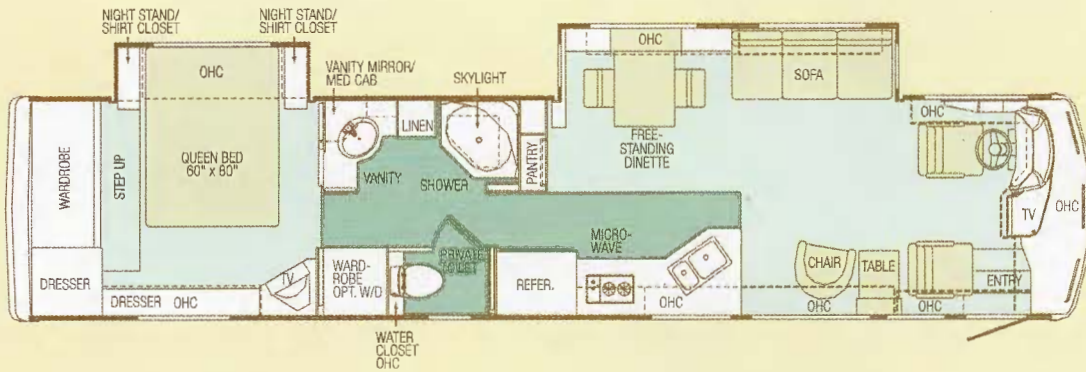


38PKD

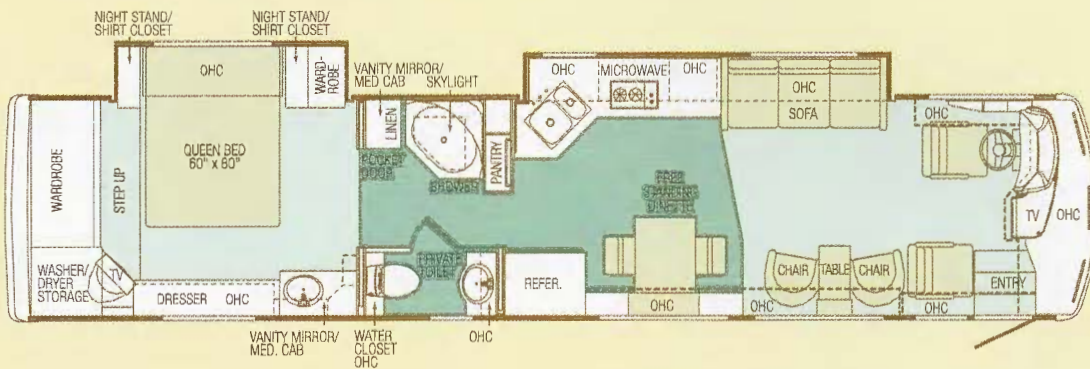


40PBD

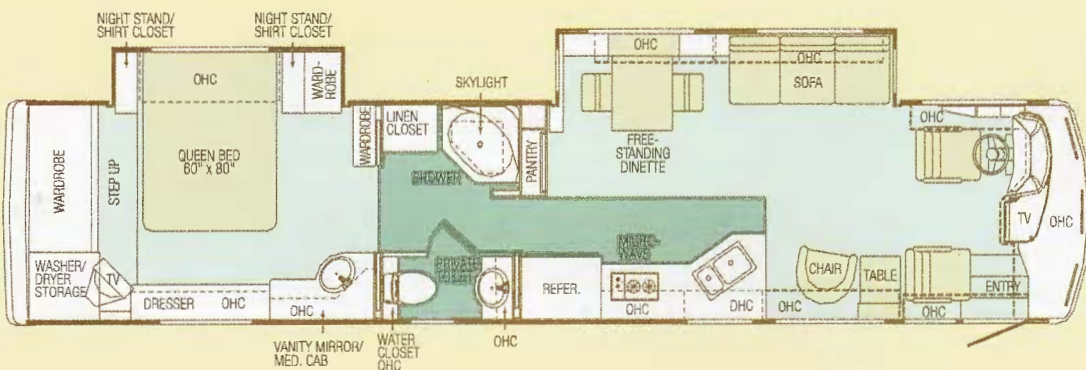




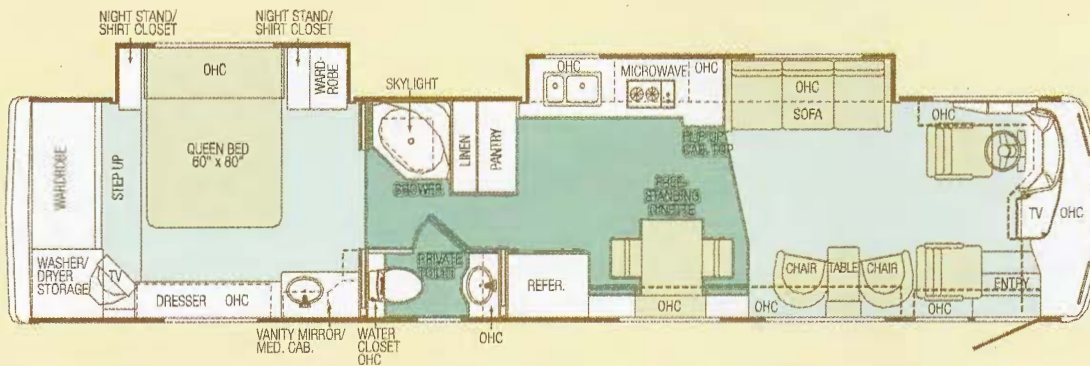
40PBDD



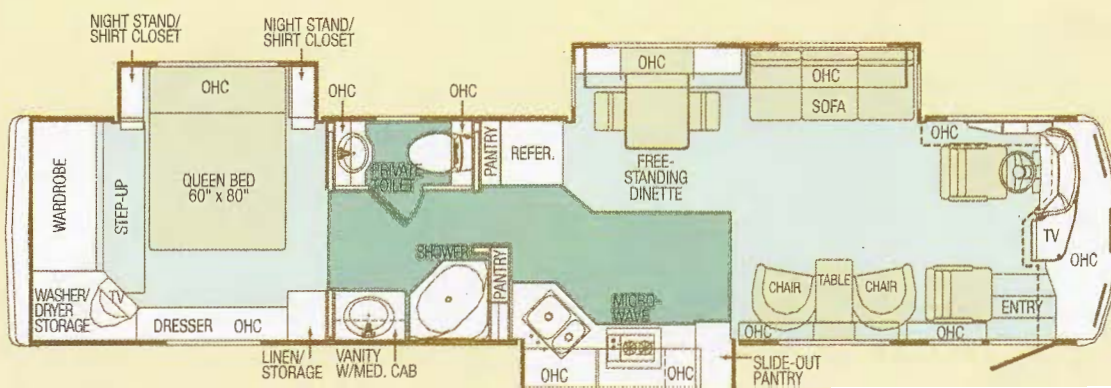
40PKD



40PKDD



40PWD



40PBT

S P E C I F I C A T I O N S

WEIGHTS	36PBD	38PBD	38PBDD	38PKD	40PBD	40PBDD	40PKD	40PKDD	40PWD	40PBT
Gross Vehicle Weight Rating (Lbs.)	33,000	33,000	33,000	33,000	33,000	33,000	33,000	33,000	33,000	33,000
Gross Combined Weight Rating (Lbs.)	43,000	43,000	43,000	43,000	43,000	43,000	43,000	43,000	43,000	43,000
Gross Axle Weight Rating (Front) (Lbs.)	13,000	13,000	13,000	13,000	13,000	13,000	13,000	13,000	13,000	13,000
Gross Axle Weight Rating (Rear) (Lbs.)	20,000	20,000	20,000	20,000	20,000	20,000	20,000	20,000	20,000	20,000

MEASUREMENTS

Wheelbase	228"	252"	252"	252"	270"	270"	270"	270"	270"	270"
Overall Length	37' 4"	39' 4"	39' 4"	39' 4"	40' 10"	40' 10"	40' 10"	40' 10"	40' 10"	40' 10"
Height (with A/C)	11' 8"	11' 8"	11' 8"	11' 8"	11' 8"	11' 8"	11' 8"	11' 8"	11' 8"	11' 8"
Interior Height	79"	79"	79"	79"	79"	79"	79"	79"	79"	79"
Interior Width	96"	96"	96"	96"	96"	96"	96"	96"	96"	96"
Exterior Width	100.5"	100.5"	100.5"	100.5"	100.5"	100.5"	100.5"	100.5"	100.5"	100.5"

TANK CAPACITIES All Tank Capacities are Approximate. Actual "Usable Capacity" May Vary as a Result of Variances in Installation and Fabrication of the Tanks.

Water Heater (Gal.)	10	10	10	10	10	10	10	10	10	10
Gray Tank (Gal.)	60	60	60	60	60	60	60	60	60	60
Black Tank (Gal.)	40	40	40	40	40	40	40	40	40	40
Fresh Tank (Gal.)	90	90	90	90	90	90	90	90	90	90
LP Tank (Gal.)*	43	43	43	43	43	43	43	43	43	43
Fuel Tank (Gal.)	128	128	128	128	128	128	128	128	128	128

*Actual Filled LP Capacity is 80% of Listing Due to Safety Shut Off Required on Tank.

CHASSIS/ENGINE/SUSPENSION

Standard Features

Semi-Monocoque Roadmaster Chassis
 Cummins® ISC 350 Electronic Engine with
 Allison® 3000 MH 6-Speed World
 Transmission and Electronic Shifter
 Torque: 1050 (Lbs.-Ft. Max. Net at 1,424 RPM)
 Rear Axle Ratio: 4.30: 1
 Cubic Inch Displacement: 504.5"/8.3L
 160 amp Alternator
 Radial Tires: 295/80R/22.5H
 Full Air Suspension with Eight Outboard Air Bags
 and Eight Bilstein Shocks
 Polished Aluminum Wheels (4)
 Transmission Temperature Gauge
 Transmission Oil Cooler
 Dual Fuel Fill
 Anti-Lock Braking System
 with Full Air Brakes (Drum)
 Pac Exhaust Brake
 Auto Slack Adjusters

Fuel/Water Separator

Fuel Filter
 Air Cleaner Restriction Indicator
 Engine Block Heater with Switch on Dash
 Automatic Hydraulic Leveling Jacks
 10,000 Lb. Hitch Receiver
 with Six-Point Connector
 Undercoating

Options

Cummins® ISL 370 Electronic Engine Allison
 3000MH 6-Speed World Transmission and
 Electronic Shifter;
 Jacobs Engine Compression Brake
 Torque: 1200 lbs-ft Max Net @ 1300 RPM's
 Rear Axle Ratio: 4.78:1
 Cubic Inch Displacement: 540"/8.8L
 Air Leveling System
 Automatic Traction Control (Required Option)

Due to the large variety of options and floor plan arrangements available to our customers, actual weights for each unit can differ significantly. Holiday Rambler provides a weight sticker on each unit we produce which includes that unit's tank capacities and approximate weight. Consult your local Holiday Rambler dealer for unit availability and further information.

The information printed in this brochure reflects product design, fabrication, and component parts at the date of printing. The manufacturer reserves the right, at any time, to make changes in product design or material or component specifications as its sole option, without notice. This includes the substitution of components of a different brand or trade name which will result in comparable performance. All information printed in this brochure is subject to change after the date of printing. Some features shown or mentioned in this brochure are optional and may only be available in selected floor plans. Photographs may show props or decorations that are not standard equipment on Holiday Rambler models. Holiday Rambler, the HR logo and its design, are registered trademarks. All other products and company names are trademarks and/or registered trademarks of their respective holders.

While the color of the motorhome's exterior and the interior fabrics depicted in this sales brochure are fair and reasonable depictions, the colors depicted may not be an exact match of the actual colors because of the variances in photo-processing and variances caused by inserting the photographs within the sales brochure. Due to product improvements, changes during the model year and/or transcription errors that may occur, information represented within this brochure may not be accurate at the time of your purchase. If certain information is significant to your purchasing decision, please confirm the information with your dealer prior to submitting your order.

Use of fabrics by Paloma Picasso in certain decors does not constitute an endorsement by Paloma Picasso. Paloma Picasso is a trademark/tradename owned by Paloma Picasso.

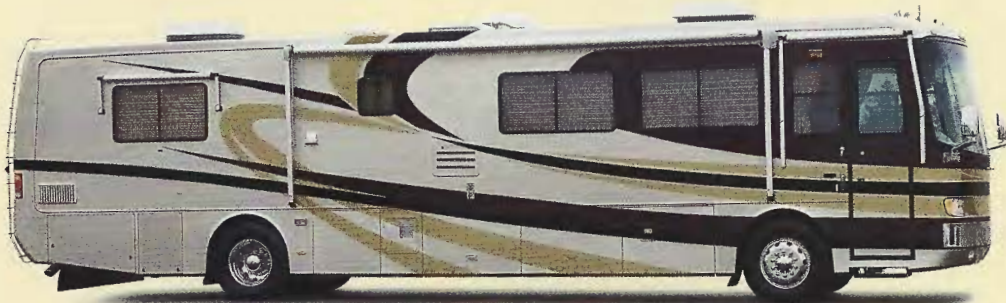
EXTERIOR GRAPHICS



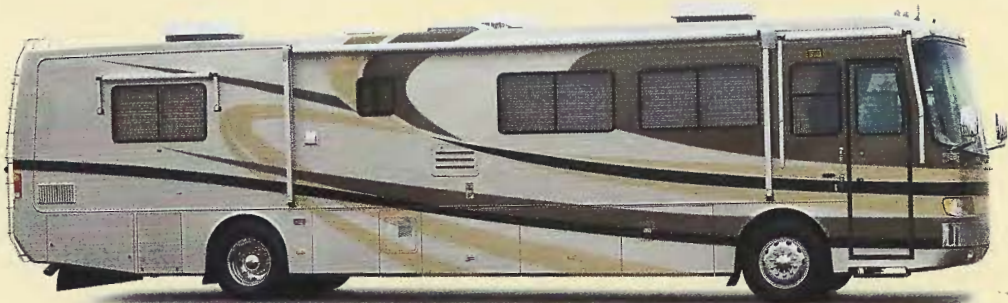
HEATHER



NOCTURNE



GALLERIA
FEATURING FABRICS BY PALOMA PICASSO



SANDSTONE



SPLASH

IMPERIAL™ STANDARDS

BODY CONSTRUCTION

Standard Features

Heavy Duty Steel Superstructure
Seamless One-Piece Molded
Crowned Fiberglass Roof
One Piece Front and Rear
Molded Fiberglass Caps
Steel Framed Floor
Two Layers Structurewood Flooring
One-Piece Windshield
One-Piece Generator Access Door
Polished Stainless Steel Front Bumper
Laminated Gel Coat Fiberglass Sidewalls
Air Activated Power Step Well Cover
Insulated Aluminum Baggage Doors
with Power Locks
Lined Pass-Through
Storage Compartments
Deluxe Full Body Paint
Raised Letter Decals
Entry Step Storage
Rear Ladder

Options

Storage Bay Slide-Out Tray (One Side)
Storage Bay Slide-Out Tray
(Complete Pass Through)
3M® Film Front Mask
Full Length Holiday Rambler Mud Flap

COCKPIT

Standard Features

High Intensity Pilot and Co-Pilot
Map Lights
Driving Lights/Headlights
Halogen Fog Lights
Audible Turn Signals
Roof Mounted Air Horns
Rear Vision System with Audio
CD Player/Radio with Six Speakers
CB Radio with Antenna
Lighted VIP Smartwheel with Controls
for Windshield Wipers, ICC and
Cruise Control
Chrome Power Heated Remote
Mirrors with Turn Signals
Low Coolant Warning Light and Buzzer
Leather Pilot and Co-Pilot 6-Way
Power Seats with Co-Pilot
Power Footrest

Carpet Driver and Passenger Floor Mats
Power Sunvisors
Intermittent Windshield Wipers
Power Steering
Cruise Control Light on Dash
Adjustable Accelerator and Brake Pedals
12V Receptacle in Dash
Docking Lights
Drink Tray
Antenna "UP" Light on Dash

Options

Pilot and Co-Pilot Side Window
Sun Screens
10-Disc CD Changer
AM/FM Stereo Cassette
Leather Buddy Seat with
Power Footrest
Digital Cellular Antenna and Wiring
Trip Tek 2000 Message Center

APPLIANCES AND ACCESSORIES

Standard Features

Large Double-Door Refrigerator with
Ice Maker and Raised Panel Doors
Recessed High Output Two-Burner
Cooktop with Sealed Burners and
Flush Mount Cover
Space Saver Convection Microwave
with Touch Control
Systems Monitor Panel
TV Antenna with Booster
Digital Satellite System Prep
25-inch Stereo Color TV with
Remote in Living Area
19-inch Stereo Color TV with
Remote in Bedroom
Home Theater System with
DVD Player
Stereo VCR with Remote Control
and Video Switching Box
Cable TV Hook-Up and
Telephone Jacks
Washer/Dryer Prep

Options

Four-Door Refrigerator with Ice
Maker and Raised Panel Doors
Vented Combination Washer/Dryer
Fully Automatic Digital
Satellite System

AC/DC Exterior Pullout
Freezer/Refrigerator (Requires
Storage Slide-Out Option on
One Side)

INTERIOR

Standard Features

Stained Oak Cabinetry
Solid Wood Square Raised Panel
Cabinet Doors
Carpet Lined Cabinet Shelves
Wall Dinette Cabinets with
Solid Surface Top
Dresser with Solid Surface Top
in Bedroom
Low Friction Roller Drawer Guides
Padded Vinyl Ceiling
Solid Surface Kitchen Countertop
with Stainless Steel Sink and
Two Sink Covers
Solid Surface Bathroom
Countertop with Integrated Sink
Day/Night Shades in Living Room
with Blackout Shades in Bedroom
Mini Blinds in Kitchen and Bathroom
Sleeper Sofa
Fabric Recliner(s) (Two in
40PWD,40PKD,40PBD,40PBT)
Wallpaper Throughout
Nylon Carpeting and Pad in Living
Area and Bedroom
Solid Surface Dinette Table with Two
Chairs and Two Folding Chairs
Rollout Pantry (N/A with
Four-Door Refrigerator)
Hardwood Veneer Paneling
Wire Waste Basket Under Kitchen Sink
Ceramic Tile in Bathroom and Kitchen
Shower
Full Length Dressing Mirror
Medicine Cabinet
Bathroom Mirror
Towel Bars in Bathroom
Robe Hook in Bathroom
Raised Panel Bathroom Door
Bedsread and Pillows
Decorative Bedroom Mirrors
Folding Party Table
Travel Locks

A N D O P T I O N S

Nightstands with Solid Surface Countertops

Options

Natural Oak Cabinetry

Natural Maple Cabinets

Natural Cherry Cabinets

Stained Cherry Cabinets

Walnut Cabinetry

Plank Flooring in Kitchen and Bathroom

Wrap Around Computer Table (Requires Recliner) (40PBD, 40PKD, 40PWD, 40PBT)

Leather Euro Recliner

Leather Sleeper J-Lounge (Passenger Side) (40' models, N/A: 40PKDD)

Leather Sleeper Love Seat with Fold Down Snack Tray (Passenger Side) (40' models only)

Leather Swivel and Glide Recliner Chair with Table (Passenger Side)

King Bed (38PKD, 40PKD, 40PKDD, 40PWD)

Solid Surface Kitchen Sink

Booth Dinette

ELECTRICAL SYSTEMS AND LIGHTS

Standard Features

50 amp 120V Distribution Panel and Power Cord with Quick-Disconnect
Onan® 7.5 Diesel Generator on Power Slide-Out Tray with Auxiliary Starter Switch

RC 7GS Panel with 2000 Watt Inverter Electrical Panel Front

Roadside Compartment

Four 6V Deep Cycle Batteries

Battery Disconnect Switch

Porch Light

Door Bell

Courtesy Night Lights in Entry Step and Bedroom

Water Pump Switch in (Galley, Bathroom,

Service Bay, Above Co-Pilot Seat)

Lights in Outside Storage Compartment
Patio Receptacle (Inside Compartment)

Underhood Utility Light

Driver Side Service Light

Fluorescent Lights in Kitchen

Decorative Dining Light

Halogen Lights with Dimmer Switch Under all Overhead Cabinets

Mood Lights Under Kitchen and Bathroom Toe Kicks

Cosmetic Lights in Bathroom

Decorative Wall Lights in Bedroom

Decorative Wall Lights in Living Area

Options

Power Cord Reel

Energy Management System

Solar Panel

PLUMBING AND LP SYSTEMS

Standard Features

Manabloc® Water System for Entire Coach

10 Gal. LP Gas/Electric Water Heater with Electronic Ignition (DSI)

Water Pump

Water Heater Bypass Valve

Water Filter in Kitchen

Glass Shower Door with Towel Bar

Single Lever Shower Faucet

China Toilet (Electronic)

No-Fuss Flush Black Holding Tank Rinsing System

Insulated Systems Compartment with Easy Access to Hook-Up

Outside Shower with Hot and Cold Water

Gravity and Pressurized Water Fill

Options

Garden Tub (38PKD, 40PKD, 40PKDD)

Neo Angled Bath Tub

HEATING, VENTS, AND AIR CONDITIONING

Standard Features

Two Low Profile 13.5M BTU Air Conditioners with Ducted Air and Wall Thermostat with Heat Pumps

42,000 BTU Furnace

(Dual Furnace on 40PBT)

Electronic Controlled Dash Heating and Air Conditioning System

12V Roof Vent

Fan with Thermostat Control in Kitchen

12V Attic Fan in Bathroom

Wet Bay with 12V Heater

Options

Aqua Hot Heating System (ILO Furnace and Water Heater)

Cold Weather Package (Individual Tank Heating Pads)

WINDOWS, DOORS AND AWNINGS

Standard Features

Radius Dual Pane Safety Glass Dark Tinted Slider Windows

Front Entry Door with Removable Screen and Awning

Lighted Entry Assist Handle with Holiday Rambler® Logo

Keyless Remote Entry System with Pocket Remote

Power Entrance Step

Tinted Skylight in Bathroom

Patio Awning with Brushed Aluminum Arms and Cover

Slide-Out Awnings

Options

Carefree Automatic Patio Awning

Girard Automatic Patio Awning (Eliminates Door Awning)

Window Awning

SAFETY

Standard Features

Back-Up Alarm

Fire Extinguisher

Deadbolt Lock on Entrance Door

120V GFI Protected Circuit (Kitchen, Bathroom, Exterior)

LP Gas Detector

Smoke Detector

Carbon Monoxide Detector

Pilot and Co-Pilot Three-Point Seat Belts (Lap and Shoulder)

Third Brake Safety Light

Egress Window(s)

Options

Deluxe Security System

Security Safe

BUILDING LASTING MEMORIES.



FUN GET-TOGETHERS. EXCITING RALLIES. BREATHTAKING EXPLORATIONS OF THE GREAT OUTDOORS. SINCE WE ROLLED OUT OUR FIRST TRAVEL TRAILER IN 1953, HOLIDAY RAMBLER® HAS BEEN HELPING RECREATIONAL VEHICLE OWNERS ENJOY THE BEST RV EXPERIENCE POSSIBLE. INNOVATIONS TO ENHANCE RV ADVENTURES. OVER THE YEARS, WE'VE MADE NUMEROUS INNOVATIONS TO HELP OUR OWNERS BUILD RICHER, MORE LASTING MEMORIES. THESE ENGINEERING ACCOMPLISHMENTS INCLUDE MANY INDUSTRY FIRSTS, SUCH AS RVs WITH AERODYNAMIC RADIUS CORNERS, REFRIGERATORS, HOLDING TANKS, TAG AXLES, ALUMINUM BODY FRAMING AND KITCHEN-SUITE SLIDES. UNRIVALED SERVICE. WE'VE ALSO IMPLEMENTED A SERVICE PROGRAM THAT'S AMONG THE BEST IN THE BUSINESS. ALONG WITH OUR PARENT COMPANY, MONACO COACH CORPORATION, WE'RE THE ONLY MANUFACTURER PROVIDING 24 HOUR A DAY, SEVEN DAY A WEEK DEALER SUPPORT BY TRAINED COMPANY EMPLOYEES. WE ALSO HAVE A NETWORK OF 400 DEALERS AND 1,000 INDEPENDENT SERVICE FACILITIES ACROSS THE U.S. SUPERIOR BENEFITS. AS A HOLIDAY RAMBLER OWNER, YOU'LL ALSO GET A YEAR'S FREE SUBSCRIPTION TO *HOLIDAYS* MAGAZINE AND A ONE-YEAR FREE MEMBERSHIP IN THE HOLIDAY RAMBLER CLUB, WHICH INCLUDES 24-HOUR EMERGENCY ROADSIDE ASSISTANCE. SO NO MATTER WHICH HOLIDAY RAMBLER YOU CHOOSE FROM OUR FULL LINE OF PRESTIGIOUS TRAVEL TRAILERS, FIFTH WHEELS AND MOTOR HOMES, YOU'LL HAVE THE ENGINEERING EXCELLENCE, TOP-NOTCH SERVICE AND SUPERIOR BENEFITS TO ASSURE THE BUILDING OF LASTING MEMORIES.

HOLIDAY RAMBLER®

This is Living.

MNC
LISTED
NYSE

Monaco is traded on