



Adventurer

LIMITED



2008 Adventurer Limited

- Workhorse UFO™ gas pusher chassis
 - Pusher benefits and performance with gas chassis
 - convenience and pricing
- Enhanced exterior designs create a unique special edition look (enhanced paint, LIMITED logo treatment)
- Traditional stile-and-rail cabinetry in Sierra Maple
- Corian® galley countertops
- UltraLeather™ six-way power assist driver's seat
- UltraLeather passenger seat with footrest
- UltraLeather Rest Easy® sofa
- UltraLeather Euro Recliner
- Stainless steel microwave convection oven
- Four-door refrigerator with icemaker and Titanium Touch™
- A&E® patio awning with wind sensor
- Front protective mask
- Rearview/side view cameras and monitor
- New front end styling
- Full-body paint
- Benchmark dinette w/adjustable Dream Dinette® table

Exterior Colors



Dusk



Mocha Frost

Interior Colorways



Log Cabin



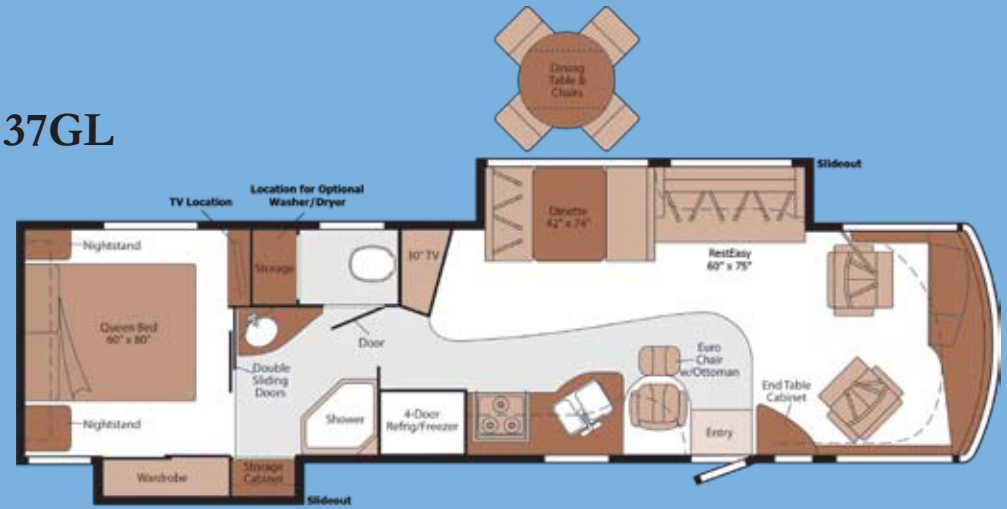
Cocoa Pecan



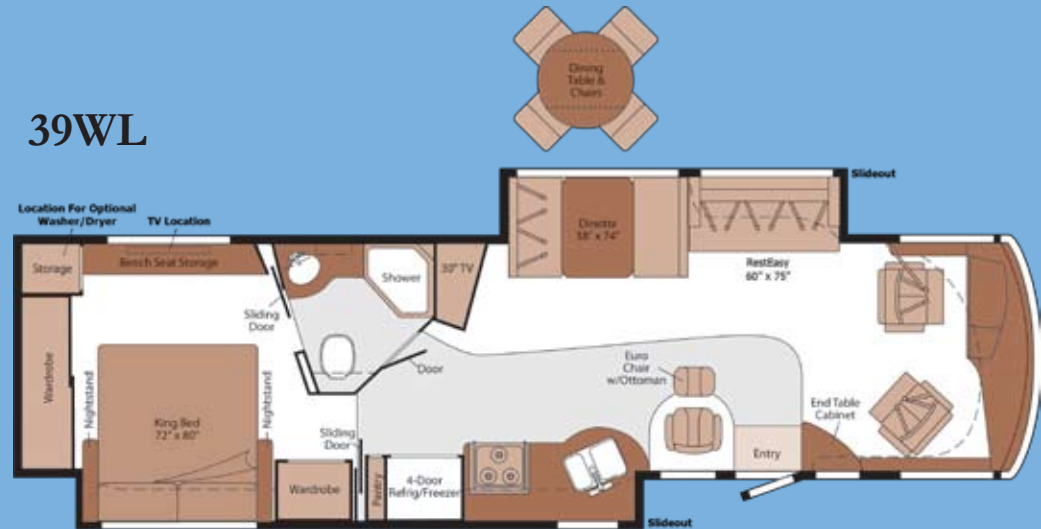
Sierra Maple

Floorplans

37GL



39WL



Model	37GL	39WL
Length	37' 10"	39' 6"
Exterior Height1	12' 4"	12' 4"
Exterior Width2	8' 5.5"	8' 5.5"
Exterior Storage3 (cu.ft.)	111.2	127.6
Awning Length	19' 6"	19' 6"
Interior Height	7' 2.5"	7' 2.5"
Interior Width	8' 0.5"	8' 0.5"
Freshwater Capacity w/Heater4 (gal.)	92	92
Holding Tank Capacity - Black/Gray4 (gal.)	62/66	62/72
LP Capacity5 (gal.)	28	28
Fuel Capacity (gal.)	100	100
GCWR6 (lbs.)	30,000	30,000
GVWR (lbs.)	26,000	26,000
GAWR - Front (lbs.)	9,500	9,500
GAWR - Rear (lbs.)	17,500	17,500
Wheelbase	242"	262"

AUTOMOTIVE/CHASSIS	37GL	39WL
Workhorse™ Chassis GM Vortec™ 8.1L, 340-hp, Allison® 2100 series 6-speed with two overdrive gears, 145-amp. alternator, 4-wheel ABS, Trailer Hitch ⁶ , 5,000-lb. drawbar/500 lbs. maximum vertical tongue weight & 7-pin wiring, Wheel Liners stainless steel	S	S
Leveling Jacks hydraulic, automatic controls, Steering Wheel power/tilt	S	S

CAB AREA & DRIVER CONVENIENCES	37GL	39WL
Cab Seat passenger w/footrest, Cab Seat 6-way power assist (driver), C.B. Wire Prep , Cab Seats (UltraLeather™) armrests, lumbar support, multiadjustable slide/recline & swivel, Console Center Cabinet , Cruise Control , Defroster Fans , Map Lights , Monitor System rearview b/w monitor w/single camera & 1-way audio, Power Door Lock keyless entry, Powerpoints 12-volt DC, Sunvisors , Window (Driver & Passenger) full-slider w/screen, Video Camera System 2 cameras, side-mounted, turn signal activated, Windshield Wipers intermittent	S	S

ENTERTAINMENT	37GL	39WL
Home Theater Sound System amplifier, AM/FM, CD/DVD player, receiver, speakers (5), subwoofer, RV Radio® (Cab) AM/FM stereo/CD, iPod/MP3 input, weather band, remotes, roof-mounted flexible rubber antenna, speakers, Radio Power Switch main/auxiliary battery, Satellite System Ready , Telephone Input interior jacks, Stereo System (Rear) AM/FM, CD/DVD player, front auxiliary input (plays MP3's), front headphone jack, alarm clock, TV LCD (Rear) AC 20" color, stereo w/remote, TV Slim CRT (Mid-coach) AC 30" color w/remote, TV Enhancement Package antenna (amplified), interior jack(s), coax wiring, exterior jack, Video Selection System	S	S
Satellite HD ready , Satellite Dish Antenna RV digital, automatic, dual LNB's, King-Dome®	O	O

INTERIOR	37GL	39WL
Ceiling vinyl, Countertop Corian galley, laminate bath, Curtain front wraparound, Lights ceiling, wall switches, incandescent throughout coach, Light decorative, dinette, Lights reading, lounge, bedroom area, Mini Blinds galley, bath on 37G, Roof Vent bath area, powered fan, Roof Vent galley, powered ventilator fan, Shades day/night pleated, lounge, dinette & night pleated bedroom, Windows dual-glazed/thermo-insulated	S	S

FURNITURE	37GL	39WL
Chair Lounge (UltraLeather) Euro Recliner w/ ottoman, Dinette (Fabric) w/"Dream" table and access to storage below, child seat tether anchor, Rest Easy (UltraLeather)	S	S
Dining Table & Chairs freestanding (4)	O	O

GALLEY	37GL	39WL
Range 3-burner, w/storage below, Microwave/convection oven w/range fan, stainless steel, Range cover solid surface, Refrigerator/Freezer 4-door w/ icemaker, Titanium Touch, Norcold, Sink Covers solid surface	S	S

BATH	37GL	39WL
Cabinet lavatory, Cabinet linen/storage, Faucet (Lavatory) dual-control, Faucet (Shower) dual-control, flexible showerhead, Light shower, Lights makeup, Shower Door glass	S	S

BEDROOM	37GL	39WL
Bed queen, innerspring w/underbed storage, bedspread, pillow shams, headboard	S	
Bed king, innerspring, Serta®, bedspread & pillow shams		S

EXTERIOR	37GL	39WL
Awning 19'6" passenger-side rear, electric w/wind sensor w/remote, Awning Rails w/rain gutters, Door entrance w/screen door, deadbolt lock, Entrance Door Steps triple, electric w/doorjamb switch, Ladder , Lights porch & stepwell, Fuel-Fill Door locking, Front Lower Protective Mask , Mirrors remote w/defrost, Receptacle AC duplex, Sidewall Skin 1-piece smooth fiberglass, high-gloss, Storage Compartments valance panels, gas struts, TriMark® KeyOne™ System, paddle latch, lights, TV jack	S	S
Awning 8' passenger-side front, electric w/wind sensor		S

SYSTEMS	37GL	39WL
HEATING/AC - Automotive Heater/Air Conditioner blend air system, Furnace 40,000 BTU, TrueAir® Residential Central Air Conditioning w/heat pump	S	S
ELECTRICAL - Auxiliary Start Circuit, Battery (Coach) deep-cycle (2), Battery Disconnect manual, chassis, Battery Disconnect Switch coach, Dual Battery Charge Control automatic, Electrical Distribution System AC & DC breaker panels, converter/charger 55-amp., remote, electric, Generator 5,500-watt, Cummins Onan® Marquis Gold™, Generator/Shoreline Automatic Changeover Switch , Inverter DC/AC, 600-watt, OnePlace® Systems Center wall-mounted, battery condition gauge, PowerLine® energy management display, generator hourmeter gauge, generator start/stop switch, heating & A/C thermostat, holding tank levels, LP tank level, water heater switch & lights, water pump switch, water tank level, Power Cord 50-amp., PowerLine Energy Management System , Service Center (Electrical) cable TV input, power cord, shoreline/generator automatic changeover switch, telephone input, portable satellite dish hookup, QuickPort® service connection hatch, Solar Panel10-watt battery charger	S	S

PLUMBING – Drain 1½" water tank, Service Center (Water/Drainage)	S	S
city water hook-up/tank diverter fill, drain for fresh water system, drainage valves, exterior wash station w/lighted pump switch, holding tank flushing system, 10' sewer hose, Quickport® service connection hatch, Tank flushing system, black tank only, Tank holding, heated compartment, Tank LP , permanent mount w/gauge, TrueLevel™ Holding Tank Monitoring System , Water Heater 10-gallon electronic ignition, LP gas/120 VAC w/motoraid, Water Pump demand, Water Tank Fill pressurized city hookup w/diverter valve, Water System Filtration Package replaceable filter, filter housing, wrench, Water System Winterization Package water heater bypass valve, water pump diverter valve & siphon tube		
Washer/Dryer Combination	O	O

SAFETY	37GL	39WL
Assist Bar interior, Assist Handle exterior, Bumpers front & rear, Child Seat Tether Anchor , Detectors/Alarms LP leak, smoke, carbon monoxide, Docking Lamps , Fire Extinguisher 10 BC, Fog Lamps , Ground Fault Interrupter , Lamps auxiliary, rear sides, illumination, Lights high-mount brakelamps, Light(s) courtesy w/wall switch(es), Seat Belts cab, 3-point, Seat Belts lap (in selected areas), Window escape, Windshield one piece, laminated safety glass	S	S

WARRANTY ⁷	37GL	39WL
12-month/15,000-mile basic limited warranty ⁸ , 36-month/36,000-mile limited warranty on structure ⁸ , 10-year limited parts & labor warranty on roof skin ⁸	S	S

1 The height of each model is measured to the top of the tallest standard feature and is based on the curb weight of a typically equipped unit. The actual height of your vehicle may vary by several inches depending on chassis or equipment variations. Please contact your dealer for further information.

2 Adventurer Limited floorplans feature a wide-body design — over 96". In making your purchase decision, you should be aware that some states restrict access on some or all state roads to 96" in body width. Before making your purchase decision, you should confirm the road usage laws in the states of interest to you.

3 The load capacity of your motor home is designated by weight, not by volume, so you cannot necessarily use all available space when loading your motor home.

4 Capacities are based on measurements prior to tank installation. Slight capacity variations can result due to installation applications.

5 Capacities shown are tank manufacturer's listed water capacity (W.C.). Actual filled LP capacity is 80% of listing due to overfilling prevention device on tank.

6 Actual towing capacity is dependent on your particular loading and towing circumstances, which includes the GVWR, GAWR and GCWR, as well as adequate trailer brakes. Please refer to the Operator's Manual of your vehicle for further towing information.

7 See separate chassis warranty.

8 See your dealer for complete warranty information.

NA Not Available

S Standard

O Optional

Not all items available in combination. See your dealer for details.

Winnebago Industries® continuing program of product improvement makes specifications, equipment, model availability and prices subject to change without notice. Comparisons to other motor homes are based on the most recent information available.