

 **NAVION**

2007





### A MOTOR HOME UNLIKE ANY OTHER.

Take a moment to enjoy the distinctive, flowing lines of the 2007 Itasca Navion®. Now, fire up the Mercedes-Benz® five-cylinder, turbo-diesel engine that gets an estimated 17 to 19 miles per gallon. Feel the 2.7 liters of German-engineered performance work seamlessly with the 5-speed automatic transmission.

Admire the impressive turning radius, four-wheel ABS disc brakes and independent front suspension that help you glide through the tightest turns. Spend the night in your beautiful new motor home. Then do it all again tomorrow. This is what traveling is all about. This is the Itasca Navion.

## DISTINCTIVE

Navion takes motor home styling in bold new directions with clean lines, contemporary fabrics and satin nickel hardware that is guaranteed to impress. The elegant curves in the frameless cabinetry embody this new look, as does the textured, stainless steel refrigerator façade.

For maximum comfort, Navion provides thermostat-controlled cabin heating and air conditioning with an available heat pump for warmth without using LP. You'll also appreciate the privacy afforded by the day/night pleated shades.

A handy remote lets you easily play your favorite music on the Clarion® dash radio/CD player, which can be upgraded with the Sirius® Satellite\* radio package. Sirius brings you 120 channels of crystal-clear programming and a free six-month subscription.

Enjoy the ride in fully adjustable luxury cab seats with lumbar support for extended trips. The contemporary look of the Navion extends to the dash with an available Brushed Aluminum appliqué for the instrument panel, shift panel and beverage tray.

\* Sirius Satellite radio not available in Canada

**WEB** Select a Key Feature

The **WEB** icon designates a Winnebago Industries Key Feature. For further in-depth information and photos, use the drop-down menu or click on the 'Key Features' page at [winnebagoind.com](http://winnebagoind.com).



**DASH** The dash smartly positions everything you need while driving, including a clip to hold your map. When moving between the cab and living area, you'll appreciate the generous opening afforded by the cutaway cab design. Dual airbags come standard and an available rearview monitor with one-way audio provides added peace of mind when backing and maneuvering. Upgrade the cab seats to UltraLeather™ for a more luxurious ride.



**GALLEY** Make quick work of meal preparation and cleanup in a galley that features a large, round, stainless steel sink, a three-burner range top and a microwave/convection oven. Storage is plentiful and easily accessible, and a sink cover creates additional counter space. The available water filtration system provides crystal-clear drinking water to the galley faucet.



**FULL-EXTENSION DRAWER SLIDES** Drawers open fully for easy access.



## REACHING NEW HEIGHTS

Our SmartSpace™ design philosophy places a premium on innovative features that make the most of the available space, such as the overhead bunk that lifts up for easy access to the cab area. A front overhead storage cabinet can replace the bunk for additional storage space (NA 23H). Even with the bunk, you'll have plenty of places to store your gear with a wardrobe, cabinets and storage compartments throughout the motor home.

Not only does the contemporary sofa feel as good as it looks, it faces the 20" LCD TV and DVD player for prime viewing (14" LCD on 23H). A skylight provides extra climate control with an easy-to-use vent handle, sliding screen and pleated shade.

The bathroom features a flexible showerhead, skylight and a retractable shower door that squeegees itself clean each time it's opened. You'll also find a stainless steel sink, chrome fixtures and an abundance of storage.



**OVERHEAD BUNK** Gas struts lift the hinged bunk out of the way for easy cab access during the day. At night it provides a spacious and comfortable 49" x 75" sleeping space. For extra storage, choose the overhead cabinet in the 23J and 23B. It holds more gear for extended trips and is accented with rope lighting for a sophisticated look.



**DINETTE** The dinette seats four and houses extra storage. At night this area converts to a comfortable bed.



**BUNK BEDS** New for 2007, the 23B features bunk beds in the sleeping area. The bottom bunk flips up to expose the large pass-through storage below. It's another example of our SmartSpace design philosophy.




## BUILT FOR PERFORMANCE

Winnebago Industries® is the only motor home manufacturer authorized by Daimler Chrysler® to use the Dodge® Sprinter cut-away chassis. It is built around a turbo-diesel engine that delivers an uncommonly quiet performance with an estimated 17 to 19 miles per gallon and extended service intervals. Little details make a big difference in the Navion, like cab doors that open nearly 90 degrees and the flip-out key holder with a door lock remote.

Our goal is to enhance every aspect of your motor home adventures, right down to every detail. That's why we package all of your water hookups, electrical hookups, hoses and valves in one service center with easy-to-read labels. You can add the 12-volt heated drainage system to extend your camping and travel season because, when you own a Navion, you'll never want the trip to end.



**WEB**  **SMART STORAGE** The rear bed in the 23J not only creates a comfortable sleeping space, it flips up to reveal side-by-side storage compartments. One compartment can expand to accept large items like a bike and can even be accessed from outside the motor home. It's another example of our Smart Storage™ design philosophy that maximizes usable storage space.



**HITCH** Tow your favorite toys with the standard 3,500-lb. hitch with 350-lb. vertical tongue weight.



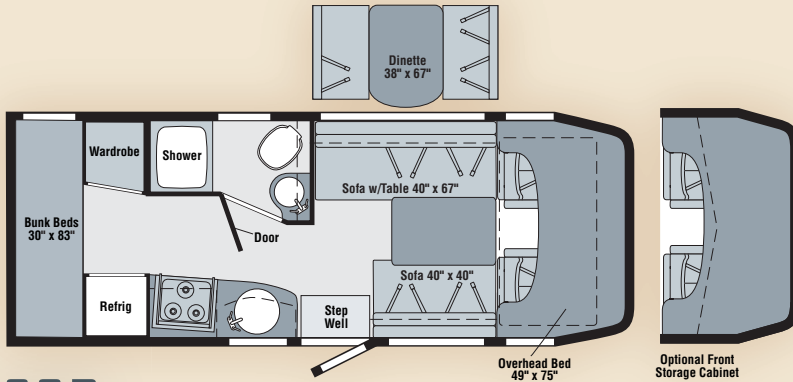
**FLIP-OUT KEY** The ignition key folds into the keyless door lock remote so it's always handy and won't poke a hole in your pocket.



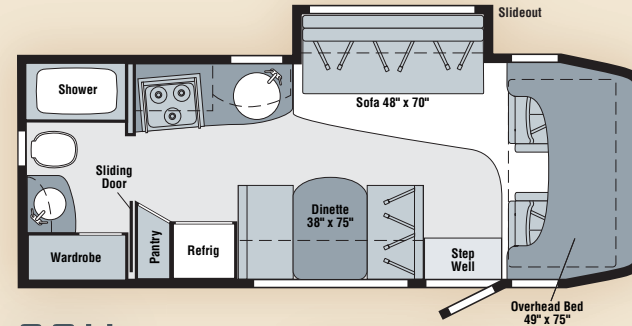
**SLIDING STORAGE** An easy-to-use sliding exterior storage bin seals tightly to protect your things from dirt and moisture. It even includes a drain plug that makes cleaning easier.



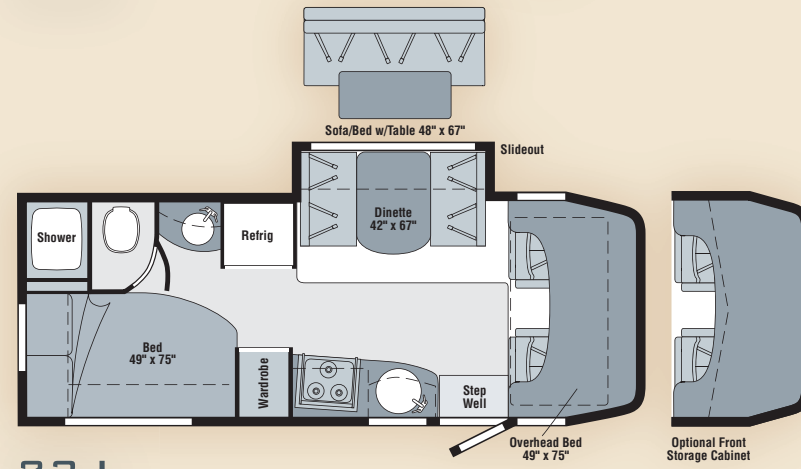
**EXTENSION LADDER** Mounted to the back wall with a folding design for quick use and storage.



**23B**  
NEW



**23H**



**23J**

**WEB TRULEVEL**  
Eliminate the guesswork when it comes to tank levels with our exclusive TrueLevel™ holding tank monitoring system. It incorporates detector cells that read liquid levels from outside the tank. No probes means no more corrosion, just accurate readings time after time.



**EXTERIOR SERVICE CENTER** Houses water, drainage facilities and the available exterior wash station. Electrical hookups can also be found here, including a power cord with the QuickPort service connection hatch. This hatch allows you to close the compartment door even when connected to hookups at the campground.

WEIGHTS & MEASURES	23B NEW	23H	23J
<b>Length</b>	23'5"	23'5"	23'5"
<b>Exterior Height<sup>1</sup></b>	10'9"	10'9"	10'9"
<b>Exterior Width</b>	7'6"	7'6"	7'6"
<b>Exterior Storage<sup>2</sup> (cu. ft.)</b>	37.9	17.8	25.3
<b>Awning Length</b>	10'	10'	10'
<b>Interior Height</b>	6'8"	6'8"	6'8"
<b>Interior Width</b>	7'3"	7'3"	7'3"
<b>Freshwater Capacity w/Heater<sup>3</sup> (gal.)</b>	33	34	34
<b>Holding Tank Capacity - Black/Gray<sup>3</sup> (gal.)</b>	30/32	33/32	31/38
<b>LP Capacity<sup>4</sup> (gal.)</b>	18	18	18
<b>Fuel Capacity (gal.)</b>	26.4	26.4	26.4
<b>GCWR<sup>5</sup> (lbs.)</b>	13,700	13,700	13,700
<b>GVWR (lbs.)</b>	10,200	10,200	10,200
<b>GAWR - Front (lbs.)</b>	3,859	3,859	3,859
<b>GAWR - Rear (lbs.)</b>	7,056	7,056	7,056
<b>Wheelbase</b>	159"	159"	159"

AUTOMOTIVE/CHASSIS	23B	23H	23J
<b>Dodge® Sprinter Chassis</b> - 2.7L CDI 5-cylinder, turbo-diesel, 154-hp, automatic 5-speed transmission w/tip shift, 4-wheel ABS w/skid control, 150-amp. alternator, dual rear wheels, <b>Trailer Hitch<sup>5</sup></b> 3,500-lb. drawbar/350-lb. maximum vertical tongue weight & 6-pin wiring connector, <b>Wheelcovers</b> 16" (4)	S	S	S
<b>Air Springs</b> auxiliary rear	0	0	0

CAB AREA & DRIVER CONVENIENCES	23B	23H	23J
<b>Beverage Holders, Cab Seats (Fabric)</b> armrest, adjustable lumbar support, adjustable headrest, multi adjustable slide/recline, <b>Cruise Control, Curtain</b> cab divider, <b>Document Clip, Floor Mat</b> 1-piece carpet, fitted, <b>Power Door Locks</b> w/ remote control, driver/passenger/main entry, <b>Power Cab Windows, Powerpoint</b> 12-volt DC/cigarette lighter, <b>Sunvisors, Temperature</b> outside gauge, <b>Trim Panels</b> driver & passenger doors, <b>Windshield Wipers</b> intermittent	S	S	S
<b>Appliqué</b> brushed aluminum, instrument panel, beverage tray & shift panel, <b>Cab Seats</b> UltraLeather, <sup>™</sup> <b>Monitor System</b> rearview w/single camera, 1-way audio	0	0	0

ENTERTAINMENT	23B	23H	23J
<b>Radio (Cab)</b> AM/FM/stereo/CD player/remote/speakers (2) cab, (2) coach, (1) subwoofer, Clarion, <sup>®</sup> <b>Radio Power Switch</b> main/auxiliary battery, <b>Satellite System Ready, TV Antenna (Amplified)</b> interior jack, coax wiring, cable input	S	S	S
<b>DVD Player</b> w/remote, Audiovox, <b>TV 14"</b> LCD w/remote		S	
<b>Stereo System (Coach)</b> AM/FM stereo radio, alarm clock, CD/DVD player, input jack, <b>TV 20"</b> LCD w/remote	S	S	
<b>Satellite Radio Receiver</b> includes 6-month paid Sirius <sup>®</sup> subscription (NA Canada)	0	0	0

INTERIOR	23B	23H	23J
<b>Bunk</b> front overhead w/hinged 1-piece mattress, bunk ladder, privacy curtain, windows, storage trays, light, <b>Ceiling</b> fabric, <b>Countertops</b> laminate, <b>Lights</b> halogen, <b>Lights</b> ceiling, incandescent w/wall switches, <b>Light</b> stepwell, <b>Mini Blinds</b> (galley & bath), <b>Skylight</b> w/bar/handle, sliding screen, sliding pleated shade, <b>Shades</b> day/night pleated (lounge & dinette), <b>12-Volt DC Powerpoint, Windows</b> tinted	S	S	S
<b>Cabinet</b> front overhead storage, accent lights	0	0	0

FURNITURE	23B	23H	23J
<b>Dinette</b> w/interior & exterior access to storage below front seat		S	
<b>Dinette</b> w/interior access to storage below both seats			S
<b>Dinette</b>	0		
<b>Sofa</b> w/access to storage below, throw pillow	S	S	
<b>Sofa</b> w/table	S		0

GALLEY	23B	23H	23J
<b>Faucet</b> dual-control, <b>Microwave/Convection Oven, Range Top</b> 3-burner, drawer below (NA 23B), <b>Range Hood</b> vented w/light & fan, <b>Receptacle</b> AC duplex, <b>Refrigerator/Freezer</b> large double-door (single-door on 23B), Norcold <sup>®</sup> , <b>Sink</b> single-bowl, stainless steel, round w/cutting-board sink cover	S	S	S
<b>Pantry</b>		S	
<b>Water Filtration System</b>	0	0	0

BATH	23B	23H	23J
<b>Cabinet</b> lavatory, <b>Cabinet</b> medicine w/mirrored door (NA 23B), <b>Faucet (Lavatory)</b> dual-control, <b>Faucet (Shower)</b> dual-control w/flexible showerhead, <b>Light</b> shower, <b>Roof Vent</b> powered, <b>Shower Door</b> retractable, <b>Sink</b> round, stainless steel, <b>Skylight</b>	S	S	S
<b>Roof Vent</b> powered ventilator fan	0	0	0

BEDROOM	23B	23H	23J
<b>Bed</b> angle, split mattress, pillows, pillow shams, interior & exterior access to storage below, <b>Lights</b> reading, <b>Privacy Curtain, Shades</b> day/night, pleated			S
<b>Bunk Beds</b> (2) w/mattresses, privacy curtains, storage pocket	S		

EXTERIOR	23B	23H	23J
<b>Awning Rail</b> w/rain gutter, <b>Bumpers</b> front w/step grooves & rear, <b>Door</b> entrance w/separate screen door, deadbolt lock, remote keyless entry, <b>Entrance Door Steps</b> double, electric w/doorjamb switch, <b>Ladder</b> hinged, folding, extension, <b>Light</b> porch w/interior switch, <b>Mirrors</b> electric remote w/defrost, folding extended arms, <b>Mudflaps</b> front & rear, <b>Pullout Storage Drawer</b> w/sealed lid, <b>Receptacle</b> AC duplex, <b>Sidewall Skin</b> 1-piece, high-gloss, smooth fiberglass, <b>Storage Compartments</b> w/bottom trunk liner	S	S	S
<b>Awning</b> patio, box-style		0	0
<b>Awning</b> patio, manual-style	0		

SYSTEMS	23B	23H	23J
<b>HEATING/AC – Automotive Heater/Air Conditioner</b> blend air system, <b>Air Conditioner (Roof)</b> 13,500 BTU, ceiling-ducted w/wall thermostat, <b>Furnace</b> 25,000 BTU, (23H & 23J ducted in floor, 23B ducted above floor)	S	S	S
<b>AC Heat Pump</b>	0	0	0
<b>ELECTRICAL – Auxiliary Start Circuit, Batteries (Coach) (2)</b> Group 24 deep-cycle, <b>Battery (Coach)</b> disconnect system, <b>Dual Battery</b> charge control (automatic), <b>Electrical Distribution System</b> AC breaker panel, DC automotive-style fuses, 45-amp. converter/charger, <b>Generator Prep Kit, Monitor Panel</b> battery condition gauge, generator hourmeter gauge, generator start/stop switch, holding tank levels, LP tank level, water heater lights, water heater switch, water pump switch, water tank level, <b>Power Cord</b> 30-amp., <b>Service Center (Electrical)</b> cable input, power cord, portable satellite dish hookup, Quickport <sup>®</sup> service connection hatch	S	S	S
<b>Generator</b> 3,600-watt Onan <sup>®</sup> MicroQuiet, <sup>™</sup> LP	0	0	0

SYSTEMS	23B	23H	23J
<b>PLUMBING – Drain</b> water tank, 1" <b>Service Compartment (Drainage/Water)</b> city water hookup/tank diverter fill, drainage valves, 10' sewer hose, <b>Tank</b> LP, permanent mount w/gauge, <b>TrueLevel<sup>™</sup></b> <b>Holding Tank Monitoring System, Water Heater</b> 6-gallon electronic ignition, LP gas, <b>Water System Winterization Package</b> water heater bypass valve & siphon tube, <b>Water Pump</b> demand	S	S	S
<b>Drainage System</b> heated, electric, <b>Exterior Wash Station</b> w/lighted pump switch, <b>Water Heater</b> 6-gallon electronic ignition, 120 VAC/LP	0	0	0

SAFETY	23B	23H	23J
<b>Airbags</b> driver & passenger, <b>Assist Bar</b> interior, <b>Detectors/Alarms</b> LP leak, smoke, carbon monoxide, <b>Fire Extinguisher</b> 10 BC, <b>Ground Fault Interrupter, Lamps</b> daytime running, fog, <b>Light</b> high-mount brakelamp, <b>Seat Belts</b> cab, 3-point, adjustable, <b>Seat Belts</b> lap (in selected areas), <b>Window</b> escape	S	S	S
<b>Child Seat Tether Anchor</b>			S

WARRANTY <sup>6</sup>	23B	23H	23J
<b>12-month/15,000-mile basic limited warranty,<sup>7</sup> 36-month/36,000-mile limited warranty on structure,<sup>7</sup> 10-year limited parts &amp; labor warranty on roof skin<sup>7</sup></b>	S	S	S

- The height of each model is measured to the top of the tallest standard feature and is based on the curb weight of a typically equipped unit. The actual height of your vehicle may vary by several inches depending on chassis or equipment variations. Please contact your dealer for further information.
  - The load capacity of your motor home is designated by weight, not by volume, so you cannot necessarily use all available space when loading your motor home.
  - Capacities are based on measurements prior to tank installation. Slight capacity variations can result due to installation applications.
  - Capacities shown are tank manufacturer's listed water capacity (W.C.). Actual filled LP capacity is 80% of listing due to overfilling prevention device on tank.
  - Actual towing capacity is dependent on your particular loading and towing circumstances which includes the GVWR, GAWR, and GCWR as well as adequate trailer brakes. Please refer to the Operator's Manual of your vehicle for further towing information.
  - See separate chassis warranty.
  - See your dealer for complete warranty information.
- NA Not Available  
S Standard  
0 Optional

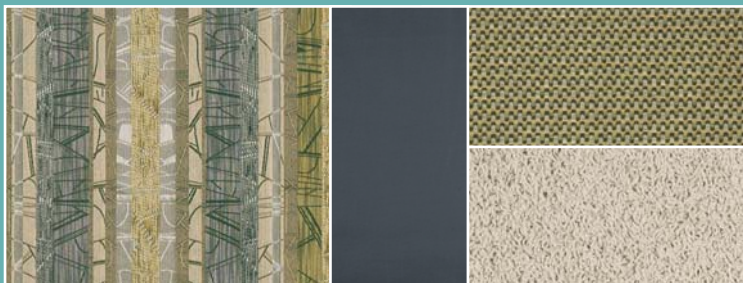
Not all items available in combination. See dealer for details.

Winnebago Industries<sup>®</sup> continuing program of product improvement makes specifications, equipment, model availability, and prices subject to change without notice. Comparisons to other motor homes are based on the most recent information available at printing.

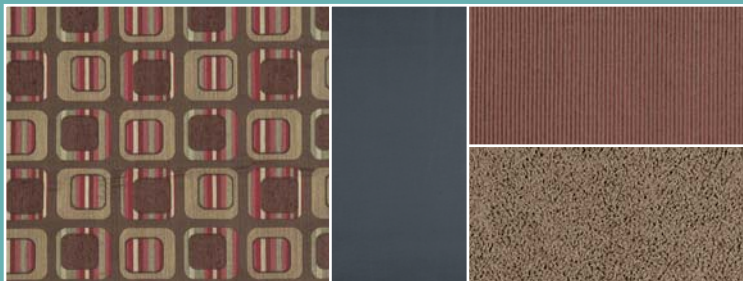
## INTERIOR DECOR

Choose from three fabric selections and two wood choices with satin nickel hardware.

SOFA	ULTRA LEATHER	ACCENT
		CARPET



Aquarium w/available Charcoal UltraLeather™



Rhubarb w/available Charcoal UltraLeather



Rocky Road w/available Charcoal UltraLeather



Honey Cherry



Washed Maple



## EXTERIOR DECOR



Gray w/Chamois/Green/Red



Gray w/Buckskin/Black/Sandstone

A screenshot of the Winnebago Industries website. The browser address bar shows "http://www.winnebagoind.com/". The navigation menu includes "PRODUCTS", "RESOURCES", "COMPANY", "CLUBS/EVENTS", "CONTACT", and "DEALERS ONLY". A "WEB" button with a dropdown menu is also visible. The main content area features a large image of a white Winnebago Navion motorhome driving on a road. Below the image, the text reads "The 2007 coaches have arrived." and "WINNEBAGO INDUSTRIES' FEATURED PRODUCTS". At the bottom, there are three promotional boxes: "Introducing the 2007 Itasca Impulse™", "TRUEAIR™ Costs 4% Faster, White 1% Quieter!", and "SIRIUS™ Available Sirius Satellite Radio. NA Canada." A "Popular Links" sidebar on the left lists "Winnebago RV's", "Itasca RV's", "Key Features", and "Dealer Locator".

WINNEBAGOIND.COM Visit us on the web for more info on all of our motor homes and a host of web-exclusive content.



**BUILT BY WINNEBAGO INDUSTRIES.  
BUILT TO LAST.**

Itasca motor homes are built by Winnebago Industries, the company that defined motor homes. The company that built its reputation on quality construction. The company that transformed the motor home concept into a way of life.

Today, Winnebago Industries brings that reputation for quality and its 48-year history of motor home innovation to the design and construction of every motor home. It's all a part of SuperStructure<sup>®</sup>, our exclusive system of proprietary structural components that instills each motor home with improved strength and durability.

**SOLID FOUNDATION** Steel and aluminum truss work provides a solid, flat foundation for floors and sidewalls. Winnebago Industries engineers also take special care to distribute the weight of components to ensure proper handling and stability.



**INTERLOCKING JOINTS** The floors, sidewalls and roof are all integrally connected using interlocking joints. This creates a coach body that acts as a cohesive unit for improved strength and durability.



**E-COATING** Winnebago Industries employs an exclusive 12-stage automotive-style dip tank process to apply an advanced electrodeposition coating on critical steel components for unmatched corrosion protection.



**WEB**

**THERMO-PANEL<sup>®</sup> SIDEWALLS** Invented by Winnebago Industries, Thermo-Panel construction combines a fiberglass panel, high-density, block-foam insulation and aluminum support structures to create some of the most durable, lightweight sidewalls in the industry.

**ATTENTION TO DETAIL** Whether it's sending every coach through a high-pressure water tunnel to check for leaks or labeling each individual wire and bar-coding parts to save time and frustration during service, Winnebago Industries considers every detail to ensure your Itasca motor home provides you with years of pleasure.

**STRONG AS STEEL** Appliances are secured directly to embedded steel plates for added safety.



1-year-old Itasca fiberglass roof



1-year-old competitor's rubber roof

**FIBERGLASS ROOF** The Navion features a crowned, one-piece fiberglass roof, backed with a 10-year limited parts-and-labor roof skin warranty. Fiberglass offers superior strength, attractiveness and durability over the rubber roofs found on many competitive models which can chalk, streak and degrade over time. Fiberglass also provides increased puncture and tear resistance.



**TAKE A TOUR** We're proud of our process, state-of-the-art facilities and the people who make Winnebago Industries number one. We invite you to visit our factory in Forest City, Iowa, for a first-hand look at the dedication and technology behind every motor home we build.



**RECOGNIZED QUALITY** The Recreation Vehicle Dealer Association annually rates RV manufacturers and awards the Quality Circle award to manufacturers who provide exceptional products, service and support. Winnebago Industries is proud to be the only manufacturer to receive this award every year since its inception.



**COMMITTED TO SERVICE** We back our motor homes with the industry's best service after the sale.

- 12-month/15,000-mile basic limited warranty
- 36-month/36,000-mile limited warranty on structure
- Standard 10-year limited parts-and-labor roof skin warranty
- Complimentary 24-hour roadside assistance program
- TripSaver Fast Track Parts. TripSaver guarantees that in-stock warranty parts ship directly to your dealer within 24 hours.
- National dealer service network



**WIT CLUB** Itasca owners are like family. Joining the Winnebago-Itasca Travelers is a great way to meet and travel with other Itasca enthusiasts. Members enjoy:

- Caravans and rallies
- Local and state group activities
- RV travel benefits



For Sales and Service Information Contact:



Built proudly by



NYSE listing: WGO

©2006 Winnebago Industries, Inc.

Printed in USA

Seat belts are your most important hookup. Always buckle up.