

Trail-Lite B-Plus

# TRAIL-LITE

by R-Vision

*The best continues to get better.*



# Standards & Options

## Kitchen & Appliances

- 3 Burner Range Top
- Adjustable Pantries (Most Models)
- Flush Mount, Single Door Refrigerator
- Gooseneck Faucet
- Lighted Power Range Hood
- Pedestal Dinette Table
- Self Edge Wood Edge Laminate Countertop (Kitchen/Dinette)

## Interior

- Barrel Chair(s) (Where Applicable)
- Bedspreads, Pillows, Pillow Shams (251, 285, 293TS)
- Decorator Mirror
- Fabric Covered Dinette Back, Side & Top
- Fabric Hide-A-Bed Sofa with Innerspring Mattress (252DS, 293TS)
- Large Stainless Steel Double Bowl Sink
- Mini-Blinds Throughout with Decorative Box Valences
- Mortise & Tenon Overhead Cabinet Doors with Beveled Mirrors (Living Area)
- Plush Sofa and/or Dinette
- Raised Panel Mortise & Tenon Overhead Cabinet Doors (Galley/Bedroom)
- Residential Linoleum (Galley, Bath, Entryway)
- Sliding Pedestal Table (Where Applicable)
- Soft Touch Vinyl Ceiling
- Stain Resistant Carpeting
- Wall Clock
- Welded Aluminum Dinette Frame

## Bath

- 6 Panel Bath Door
- 12V Power Roof Vent
- Hand Flush Commode
- Medicine Cabinet with Mirror
- Skylight in Shower

## Entryway

- Automotive Step Well
- Entry Door with Dead Bolt Lock
- Integrated Manual Step
- Large Upgraded Assist Grab Handle
- Porch Light
- White Trimmed Entry Door

## Chassis

- 35-57 Gallon Fuel Tank Capacity
- Aerodynamic Front Fiberglass Cap
- Big Button AM/FM/Cassette/CD Radio with Weather Band & SIRIUS® Satellite Radio Ready

## (Chassis cont.)

- Chevrolet/Ford (See Options Section)
- Daytime Running Lights
- Dual Air Bags
- Factory Air Conditioning, Cruise Control, Tilt Wheel and Power Steering
- Heavy-Duty 4-Speed Automatic, Overdrive Transmission
- Intermittent Windshield Wipers
- Power Windows & Door Locks
- Radial Tires
- Rear Mud Flaps
- Reclining Captain's Chairs
- Stainless Steel Wheel Covers

## Construction

- Fully Laminated Roof, Walls, & Floors with High-Density Block Foam Insulation
- Fully Welded Tubular Aluminum Roof & Sidewall Construction
- One Piece TPO Roof

## Exterior

- Deluxe Graphics Package
- Exterior Recept - GFI Protected
- Locking Exterior Storage Doors
- One Piece Fiberglass Rear Wall Surround
- Radius Corner Slider Windows
- Smooth White .070 Filon Plus Fiberglass

## Utilities

- 6 Gallon Gas Water Heater
- 12V Water Pump
- 25,000-30,000 BTU Elect. Ign. Furnace
- 30 Amp 120V Power Supply
- Battery Disconnect
- Carbon Monoxide Detector
- City Water Hook-Up
- "Command Central" Systems Monitor/Switch Panel
- Fire Extinguisher
- Generator Prep (Wire & Plumb)
- LP Gas Detector
- Pre-Wire for Ducted A/C
- Satellite Dish Prepped
- Shore Line Power Cord
- Single 12V Auxiliary Battery with 2 Battery Capacity Slide Out Tray
- Smoke Detector
- Solid State 55 Amp 12V Power Converter
- Water Heater Bypass

## Options

- 4.0 Onan Micro-Lite Generator with Auto Change Over
- 13,500 BTU Penguin Low Profile Air Conditioner
- 15,000 BTU Penguin Low Profile Air Conditioner
- 24" Color TV with Antenna Hook-Up in Overhead Cabinet
- AM/FM/CD SIRIUS Satellite Ready Stereo with Motorized 7" LCD Back-Up Monitor with Color Camera (Late May 2006. Option Replaces Standard Radio)
- Automatic Electric Entrance Step (Side Entrance Only)
- Awning
- Black High Gloss Plexi-Glass Refer Front
- CSA Approval
- Day/Night Shades
- Deluxe Heated/Remote Breakaway Exterior Mirrors
- DVD/VCR Video Package
- Exterior Entertainment Center with CD Player
- Fantastic Fan™
- Fiberglass Running Boards
- Folding Range Cover
- Ford V-8 Chassis with 5.4L Engine (Special Order)
- Ford V-10 Chassis with 6.8L Engine
- Full Body Paint (Includes High Gloss Gel Coat Fiberglass & One Piece Fiberglass Rear Cap)
- Gas/Electric DSI Water Heater
- Half Time Microwave Oven
- Heated Holding Tanks
- Helwig® Helper Springs (Required 293TS)
- High Gloss Gel-Coat Fiberglass
- Holding Tanks with Heat Pads
- Home Theatre Surround Sound System with 5 Omni-Directional Speakers & Sub-Woofer
- Large Double Door Refer
- Lower Paint
- Outside Shower
- Raised Panel Refer Front
- Rear Ladder
- Sink Covers (2)
- Spare Tire with Continental Tire Cover
- Slide-Out Awnings (Forced Option)
- Sofa IPO Dinette (214, 251)
- Stainless Steel Wheel Inserts
- Telephone Jack
- Trailer Hitch with Wire
- Tub Surround
- TV Antenna/Booster/Jack, Cable Ready
- Visor Mounted Backup Monitor
- Woodgrain Dash Treatment

## Warranty

- 12 Months/18,000 Miles Basic Limited Warranty
- 2 Year Structural - See Dealer for Complete Coverage
- 3 Years/36,000 Miles Chassis Warranty

## Fabric Samples:



◀ Floating Squares



◀ Greystone



◀ Java



◀ Mocha

**R-Vision, Inc.**  
2666 S. Country Club Drive  
Warsaw, IN 46580  
www.trail-lite.com

As R-Vision constantly strives to improve our product, all specifications listed in this informative brochure are subject to change without notice or obligation. Photos may show optional equipment which is not included in the purchase price of the unit. Test drive and review a current model on your dealer's lot today. Optional full body paint shown on cover.

Your Dealer:



## B-Plus

The Trail-Lite B-Plus gets you on the road to adventure in a compact size that's fun and easy to drive. The comfort level of the B-Plus is truly amazing. Its spacious interior boasts a full 6'10" of headroom and is fully furnished with all the necessities plus lots of extra amenities. A fully equipped galley and dry bath are included along with

handsome cabinetry, plush sofa, dinette, entertainment center (optional), and roomy sleeping accommodations. Storage space has not been neglected. An abundance of storage features, as well as a large exterior pass-through storage compartment (285), lets you conveniently stow all your camping gears and supplies. All this is created with quality craftsmanship that ensures long-lasting value.



Fully Functional Galley

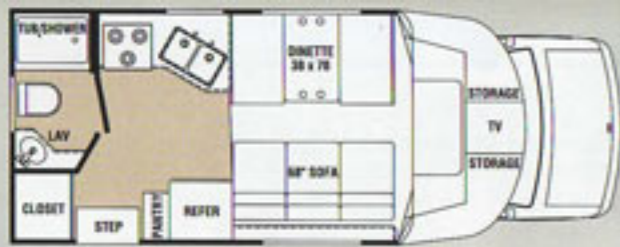


252DS with Standard Hide-A-Bed Sofa and Dual Slides

Command Central



Model 285 Rear Pass-Thru Compartment



213



214



235S

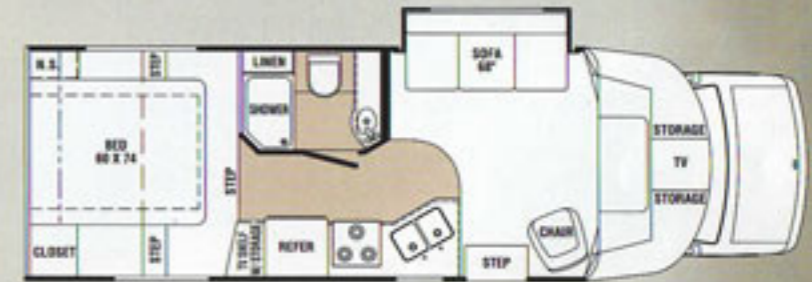
SOFA OPTION TO REPLACE DINETTE



251



252DS



285



293TS

**SPECIFICATIONS**

	213	214	235s	251	252DS	285	293TS
Ford Engine	6.8L	6.8L	6.8L	6.8L	6.8L	6.8L	6.8L
Wheel Base	138"	138"	158"	176"	194"	190"	198"
GVWR	10,700	10,700	10,700	14,050	14,050	14,050	14,050
GAWR (Front)	4,600	4,600	4,600	4,600	4,600	4,600	4,600
GAWR (Rear)	7,500	7,500	7,500	9,450	9,450	9,450	9,450
GCWR	*	*	*	*	*	*	*
Chevy Engine	6.0L	6.0L	6.0L	6.0L	6.0L	6.0L	6.0L
Wheel Base	139"	139"	159"	177"	195"	191"	199"
GVWR	12,300	12,300	12,300	12,300	12,300	14,050	14,050
GAWR (Front)	4,300	4,300	4,300	4,300	4,300	4,600	4,600
GAWR (Rear)	8,600	8,600	8,600	8,600	8,600	9,450	9,450
GCWR	**	**	**	**	**	**	**
Ext. Length w/o ladder/spare tire (Ford)	21'-11"	21'-5"	22'-7"	25'-1"	26'-2"	27'-11"	29'-3"
Ext. Length w/o ladder/spare tire (Chevy)	22'-10"	22'-4"	23'-6"	26'-0"	26'-8"	28'-0"	29'-4"
Exterior Height w/AC	10'-8"	10'-8"	10'-8"	10'-8"	10'-8"	10'-8"	10'-8"
Exterior Width	99"	99"	99"	99"	99"	99"	99"
Interior Width	95-1/2"	95-1/2"	95-1/2"	95-1/2"	95-1/2"	95-1/2"	95-1/2"
Interior Height	82"	82"	82"	82"	82"	82"	82"
Awning Size	13'-0"	12'-0"	13'-0"	16'-0"	13'-0"	13'-0"	13'-0"
Fuel Chev/Ford (Gal.)	35/37	35/37	35/37	57/55	57/55	57/55	57/55
LPG (Pounds)	42	42	42	42	42	42	42
Fresh Water Capacity (Gal.)†	35	33	35	35	35	45	34
Waste Water (Gal.)	32	27	27	27	27	27	27
Gray Water (Gal.)	32	32	32	32	32	32	32
Furnace BTU's	25,000	25,000	25,000	25,000	25,000	30,000	30,000



Model 213 Utility Storage

Note: GCWR weights vary depending on engine size and rear end ratios. Weights are approximate and based on standard features. Optional equipment is not included.  
 \* GCWR Ford, 13,000 w/5.4L-V8 & 4.1 rear axle ratio, 18,500 w/6.8L-V10 & 4.1 rear axle ratio, 20,000 w/6.8L-V10 & 4.56 rear axle ratio  
 \*\*GCWR GM, 16,000 w/6.0L-V8 & 4.10 rear axle ratio. † Sizes may change due to chassis sizes  
 \*\*\*GCWR GM 14,050 chassis, 17,600 w/6.0L-V8 and 4.10 rear axle ratio † Includes water heater capacity