


MONACO



THE CROWN ROYAL THE SIGNATURE SERIES

*Champions. The result of consistent effort, intelligent choices and meticulous craftsmanship. At MONACO this symphysis generates a breed of motorhome known for quality and substance: **THE CROWN ROYALE**. For the nineties the MONACO heritage finds new expression in **THE SIGNATURE SERIES**—a champion motorhome designed to bring us into the next turn with flying colors.*

A large photograph showing the interior of a motorhome. The focus is on a wooden cabinet with a decorative top and a window with horizontal blinds. A vase of pink and purple flowers sits on a table in the background. The wood is a rich, polished oak.

Pastels bloom in the
WILLOWBROOK fabric
collection: colors that
catch your fancy and
blend airily with the Oak
cabinetry.



Step over the threshold of the 102" widebody *Crown Royale* and you step into an environment that makes travel both comfortable and elegant. Comfort like this beautifully exemplifies the essence of a fine motorhome. Richly grained wood cabinetry, pleasingly matched and polished; exclusive designer fabrics selected for durability as well as fashion; a variety of carefully designed interiors for spacious living. Motorhomes like this are all too rare today.



Gather 'round the Galley! Here's an abundantly spacious kitchen geared for entertaining as well as day-to-day activities. Loaded with conveniences, topped with Corian® for an extraordinary solid work surface and complemented by beautifully grained oak cabinetry (also available with deep toned walnut). Innovative special storage cabinets, built-in microwave/convection oven, food blender, water purifier and ice maker provide unlimited luxury and efficiency for the gourmet on the go!

Fresh, hygienic hot water instantly and conveniently (optional on the Crown Royale).





Make way for a beautiful bathroom! Mirrored oak cabinetry bounces color and light into the room; cosmetic lighting is positioned over the vanity sink and sunlight comes streaming through the skylight above the glass enclosed Garden Shower.



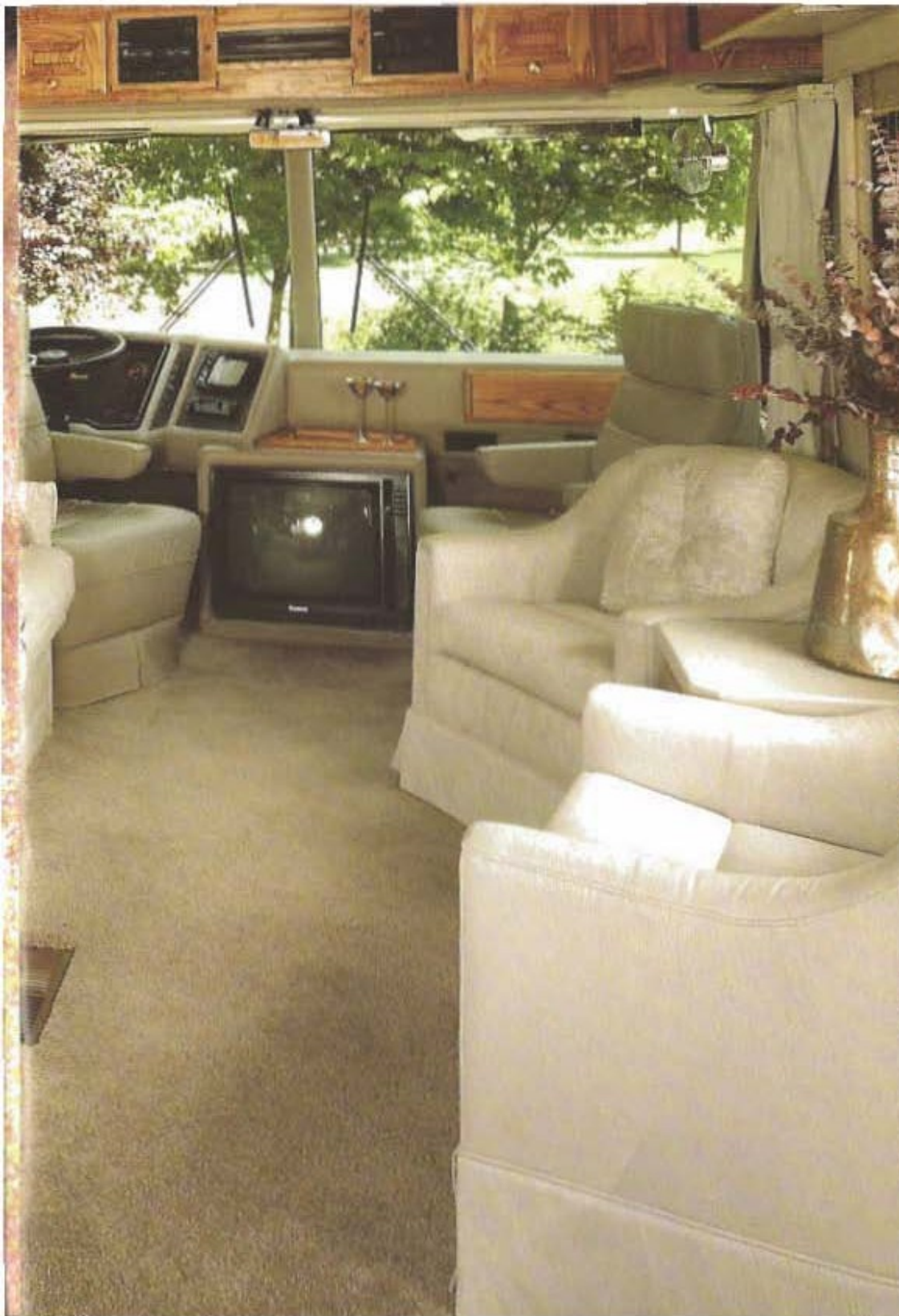
The Crown Royale. It suits your style no matter what your style! Here our well-rounded motorhome shows its versatility with comfortable seating and a perfectly practical transition from wall-to-wall carpeting into an oak floored dining area to pristine tile in the bath (carpeted bath is standard). Relax. It's mañana time!



Sparkling porcelain set into polished Corian® for a luxurious vanity trimmed with brass fixtures.

Hues of soft mauve tame the primitive pattern in this HEATHER interior. Stalk your adventures here!





A unique expression of advanced design.

A new decade of performance is unfolding as the 102 inch widebody *Signature Series* takes the road. With Monaco's exclusive Semi-Monocoque construction, you'll notice dramatic differences in handling, reduced interior noise, road hugging stability and increased power. Engineering innovations make this the first true luxury motorhome built for driving as well as living pleasure.





Silver and Ivory in a subtle brocade fabric selection we call **CHINCHILLA**, shown beautifully framed by deep walnut cabinetry on the previous pages (oak cabinetry standard).

Grasp the leather wrapped steering wheel that tilts up or down to fit your personal driving style. Notice the body fitted, fully adjustable leathermate seats. They're essential to keeping you comfortably supported as you cruise through the hills, twists and turns with ease.

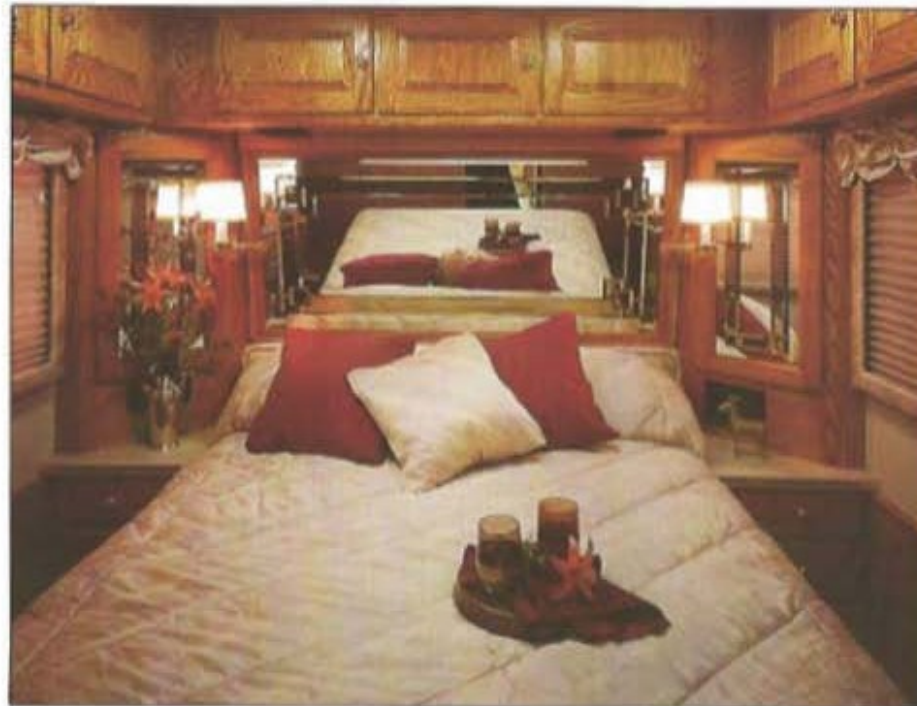
The instrument panel has a layout that reads incredibly fast. Totally complete. The information is all there. Big, bold and up front.

Straight ahead engine temperature monitor, tachometer, speedometer, oil and air pressure meters. Close at hand the computerized leveling system. Intec rear view TV, two-speed differential and Stone Bennett electronic transmission shifter.



At Monaco we believe that motorhomes do much more than take you to faraway places. They also bring you home. The Signature Series is the elegant home you return to whenever you travel.

Set your personal comfort level with air conditioning controls at your bedside. In the opposite bedside cabinet are controls so that you can tune in the AM/FM cassette radio, turn on the lights or start up the auxiliary power without ever leaving your queen-sized haven.



Brush strokes of silver splashed on alabaster lend a contemporary tone to the fabrics of this SOFT MINK interior.



CROWN ROYALE



Mechanical

Cummins 6CTA 250hp Turbo Diesel/MT643 Allison Transmission • Cummins L10 300hp Turbo Diesel/MT647 Allison Transmission (Optional) • Cummins L10 Jake Brake (Optional) • 102" widebody • 1½" tubular steel construction • Transmission Oil Cooler • Cushion Air Glide Suspension System (8 Airbags and Shocks) • Computerized Hydraulic Levelling System • 7.0 KW LP Generator • Automotive Air Conditioning • Receiver Type Hitch w/wiring harness • Steel Belted Radial Tires • 22.5 Alcoa Aluminum Wheels (4) • 50 AMP Electrical Service • Full Air Brakes System • Automatic Air Discharge System • Emergency Battery Start Switch •

Exterior

Remote Control Heated Mirrors • Quad Rectangular Halogen Headlamps • Remote Control Spot/Flood Light • Hadley Air Horns • Docking Lights • Back-up Flood lamps • Locking Fuel & Water Access Doors • Seamless One-piece Fiberglass Roof • One-piece Aluminum Underbelly/Undercoated • Illuminated Exterior Storage Compartments w/hydraulic lifters • Drain Hose w/holding compartment • Lighted Utility Center (Telephone, Cable TV, Water, Elec. hook-up) • European Style Bumpers & Grill • Roof Rack & Ladder • Engine Compartment Illumination • Audible Reverse Warning System •

Living Comfort and Convenience

19" Remote Control TV in living area • 13" Remote Control TV in bedroom • TV antennae w/power boost • VHS/VCR • AM/FM Stereo Cassette • Microwave/Convection Oven • Deluxe Blender • Water Purifier • Portable Vacuum Cleaner • Ice Maker • 2 burner range w/power exhaust • Double Door Refrigerator • Corian® Galley & Bath Countertops • Garden Shower Skylight • Power Ceiling Vent in Bath • Electronic Ignition Hot Water Heater • Carpeted Cabinets • Cedar lined closets • Oak Cabinetry (Walnut and Pickled Oak Optional) • 42000 BTU Thermostatically Controlled Furnace w/electric baseboard in bedroom • Perfecto electric heater in living room • Dual 13,500 BTU ducted Roof Air Conditioning w/thermostat control • Patio and Window Awnings • 12 Volt On/Off Switch at Entry Door • Fire Extinguisher & Smoke Detector • Attic Fan • Premium Quality Innerspring Mattress • Bedside Electronic Clock w/alarm • Electric Entry Step • Combination Lock Floor Safe • Deluxe Leathermate Pilot and Co-Pilot Seats w/6 way power controls • Deluxe telescoping/tilt steering wheel • 40 Channel hand held CB • INTEC rear view closed circuit TV system •

Optional: Water Jet Spa (tub models only), Washer/Dryer (some models), SOFT MINK Leather Package, Leather Club Chairs, Leather or Fabric Recliner, Corian Kitchen Sink, Tile Bathroom Floor, Microphore Toilet (some models), Entertainment Center, Insta Hot Water, Jake Brake on L10 engine only, Engine exhaust brake on 6 CTA.

SIGNATURE SERIES

Mechanical

Cummins 6CTA 250hp Turbo Diesel/MT643 Allison Transmission Standard on 37' • Cummins L10 300hp Turbo Diesel/MT647 Allison Transmission Standard on 40', Optional on 37' • Jake Brake on Cummins L10 (Optional on all models) • Cummins 444hp Turbo Diesel/HT 754 5 Speed Transmission (Optional on all models) • 1½" tubular steel Semi-Monocoque Construction • Transmission Oil Cooler • Computerized Hydraulic Levelers • 9.0 KW Diesel Generator • Receiver Type Hitch w/wiring harness • Steel Belted Radial Tires • 22.5 Alcoa Aluminum Wheels • 50 AMP Electric Service • Full Air Brakes System • Cushion Air Glide Suspension system (8 Airbags and Shocks) • Automotive Air Conditioning • Automatic Air Discharge System • Solar Battery Charger (optional) • Emergency Battery Start Switch •

Exterior

Remote Control Heated Mirrors • Quad Rectangular Halogen Headlamps • Remote Control Spot and Flood Light • Hadley Air Horns • Docking Lights • Locking Fuel & Water Access Doors • Seamless One Piece Fiberglass Roof • Undercoated Aluminum Underbelly • Drain Hose With Holding Compartment • Bus Style Storage Bays • Lighted Utility Center (Telephone, Cable TV, Water and Electric Hook-up) • European Style Bumpers & Grills • Engine Compartment Illumination • Audible Reverse Warning System • Back-up Flood Lamps •

Living Comfort and Convenience

19" Remote Control TV in living area • 13" Remote Control TV in bedroom • TV antennae w/power boost • AM/FM Stereo Cassette • VHS/VCR • Microwave Convection Oven • Deluxe Blender • Insta-hot water • Icemaker • Water Purifier • 10 Gal. Hot Water Heater w/electronic ignition • Portable Vacuum Cleaner • 2 burner Range Top with Power Exhaust • Double Door Refrigerator • Corian® Galley & Bath Countertops • Garden Shower Skylight • Power Ceiling Vent in Bath • Carpeted Cabinets • Cedar lined closets • Premium Quality Innerspring Mattress • Combination Lock Floor Safe • Fire Extinguisher & Smoke Detector • Attic Fan • 12 volt on/off switch at entry • Electric Entry Step • Dual 13,500 BTU ducted roof A/C with Thermostat Control • 45000 BTU Thermostatically controlled Furnace • Electric baseboard heater in bedroom • Patio and Window Awnings • Electronic Alarm Clock in bedroom • Natural Oak Cabinetry (Walnut & Pickled Oak Optional) • Deluxe Tilt/Telescoping Steering Wheel • Leathermate Pilot/Co-pilot Chairs with 6 way power • 40 Channel hand held CB • INTEC rear view closed circuit TV system •

Optional: Washer/Dryer (some models), Water Jet Spa (tub models only), SOFT MINK Leather Package, Leather Club Chairs, Leather or Fabric Recliner, Tile Bathroom Floor, Microphore Toilet (some models), Corian Kitchen Sink, Entertainment Center, Jake Brake on L10 engine only, Engine exhaust brake on 6 CTA.



Up to 400% increased storage capacity is made possible by the Signature's Semi-Monocoque construction. These bus style storage

compartments are lighted, carpeted and easily accessed through lockable hydraulic doors on both sides of the coach.



Monaco's motorhome engineering breathes new life into luxury.

CUMMINS L10 The 300hp Diesel comes standard on the 40' Signature and is an option on the 36' Crown Royale and 37' Signature. Turbo-charged with Cummins Optimized After Cooling, this engine is the most fuel efficient heavy-duty diesel engine in the lightest weight, most compact package. The L10 gets up to 15% better fuel economy than any other engine in the 260-350hp class! (320hp also available)



CUMMINS 6CTA8.3 This turbo-charged 250hp diesel comes standard on the 36' Crown Royale and the 37' Signature. Cummins' own Holset exhaust driven turbo-charger gives you improved fuel efficiency and greater power. The large capacity After Cooler provides more efficient combustion and reduced internal stress for longer engine life.



CUMMINS 444XT. Optional on the 37' and 40' Signature Series. The 444hp of this turbo-charged diesel is matched by Optimized Aftercooling. Cummins' own HT3B Turbo achieves high efficiency, fuel economy and snappy response with a dual entry design to ensure optimum performance, even at high altitudes. The Cummins Jake Brake is factory installed as a standard feature.



We build each and every Monaco motorhome from the ground up, starting with the *only* chassis manufactured exclusively for motorhomes since 1979—our own heavy duty **ROADMASTER**. Its' reliable strength and smooth handling are the result of combining engine and drive line options suited to individual motorhome configurations.

In the *Signature Series*, the **ROADMASTER** chassis provides the foundation for our unique Semi Monocoque construction—a 1½ inch steel network that provides greater structural integrity and more uniform stress distribution.

True performance requires directional stability and control over a wide variety of surfaces and conditions. To accomplish this, both *Crown Royale* and *Signature Series* models offer a choice of powerful rear-mounted Cummins diesels which we combine with an Allison transmission and Rockwell Easy Steer with its 50° turning radius. The Cushion Air Glide suspension system with 8 outboard-mounted airbags and shocks maintains accurate wheel geometry relative to the road's surface. As a result, wheel control is precise: handling and ride are responsive and smooth.

Monaco's precision crafted *Crown Royale* and *Signature Series* motorhomes blend leading edge technology with traditional quality. Each one is a fully integrated unit with reliable strength, the best handling, fast acceleration and effortless hill climbing—free breathing performance for years to come!




SPECIFICATIONS

	Crown Royale 36', Model R-2800	Signature Series Semi-Monocoque Chassis, Model R-3500
Engine	Cummins 6CTA 250hp Diesel Cummins L-10 300hp Turbo (Optional)	Cummins 6CTA 250 hp Turbo (Standard on 37') Cummins L10 300hp turbo (Standard on 40. Optional on 37)
Air Brakes	Dual modulated "s" cam 4x15 (front) 7x16 (rear)	Dual modulated "s" cam 4x15 (front) 7x16 (rear)
Frame	30,000 PSI tensile X, 60,000 PSI yield 8.5 x 3.5 x .313 Insert 7.8 x 3.20 x .313	Semi Monocoque
Steering	Saginaw 710 heavy duty w/engine driven hydraulic power assist	Ross TRW integral power steering gear. Engine driven hydraulic pump w/remote reservoir.
Axle (front) (rear)	Rockwell 12,000lb "Easy Steer" with 50° turning angle Eaton 23,000lb w/2 speed differential	Rockwell 12,000lb "Easy Steer" with 50° turning angle Eaton 23,000lb w/2 speed differential
Ratio (Cummins)	3.55 High Range/ 4.83 Low Range Eaton 2 speed	3.55 High Range/ 4.83 Low Range Eaton 2 speed
Track	93" outside to outside front and rear	93" outside to outside front and rear
Air Suspension	Cushion Air Glide, 8 Airbags	Cushion Air Glide, 8 Airbags
GVW	26,000lb (Braking system dynamically tested at Bendix Proving Grounds)	31,200lb on 37', 34,700lb on 40'
Wheels	4 Alcoa polished aluminum 22.5 2 Firestone Steel inner rear duals. Chrome hub and nut covers.	4 Alcoa polished aluminum 22.5 2 Firestone Steel inner rear duals. Chrome hub and nut covers.
Tires	10R/22.5 Steel belted Radials	295-70R/22.5 Steel belted Radials
Radiator	Side rear mounted	Side rear mounted
Transmission	Cummins L10 300hp Turbo, Allison MT 647 4 speed with lock- up torque converter Cummins 6CTA 250 hp Turbo Allison MT 643 4 speed w/lock-up torque converter	Cummins L10 300hp Turbo, Allison MT 647 4 speed with lock- up torque converter Cummins 6CTA 250 hp Turbo Allison MT 643 4 speed w/lock-up torque converter
Fuel System	150 Gallon Diesel Fuel Tank. Diesel Fuel double filtered w/water separator	200 Gallon Diesel fuel tank. Diesel fuel double filtered w/water separator
Capacities	76 gallons fresh water • 60 gallons gray holding • 40 gallons black holding • 42 gallons LP • Exterior height: 11'3" to top of air conditioner	100 gallons fresh water • 70 gallons gray holding • 30 gallons black holding • 55 gallons LP • Exterior height: 11'10" to top of air conditioner

Monaco's policy of continuous product improvement makes all equipment, standard or optional, capacities, brand names, specifications and model availability subject to change without notice. We reserve the right to make those changes without notice and we are happy to verify any item based on the serial number of the motorhome.

KOHLER
GENERATORS

 **Dometic**



SIGNATURE SERIES FLOORPLANS

Twin Bed Option Available on All Floor Plans

Exterior Colors



SOFT MINK



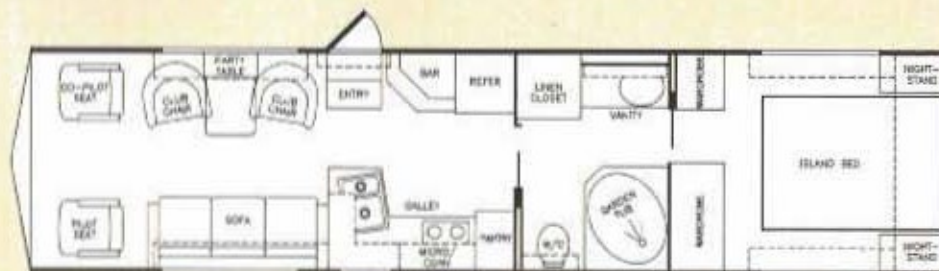
CHINCHILLA



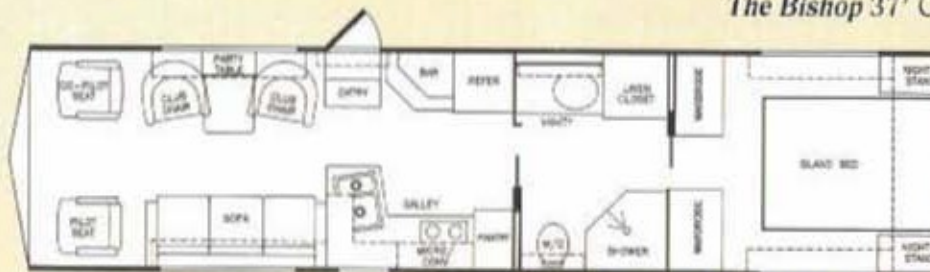
WILLOWBROOK



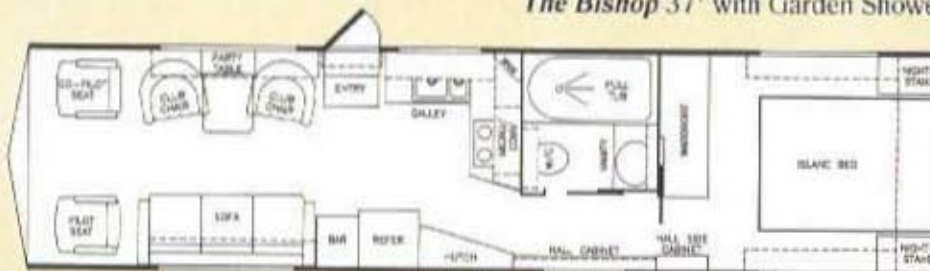
HEATHER AND LONDON FOG



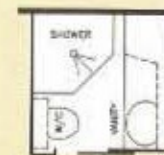
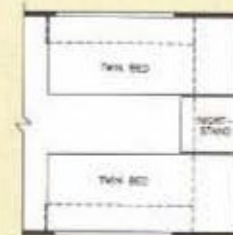
The Bishop 37' Center Aisle w/Garden Tub



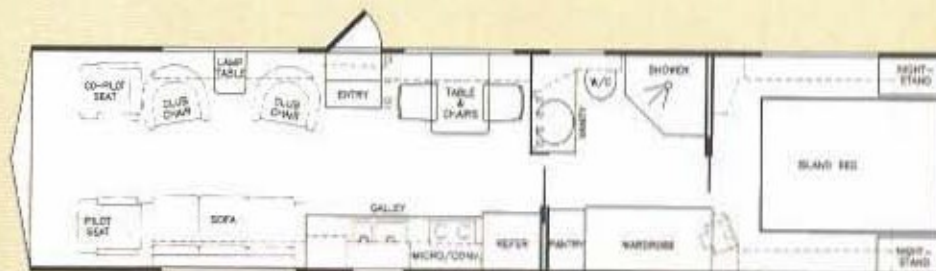
The Bishop 37' with Garden Shower



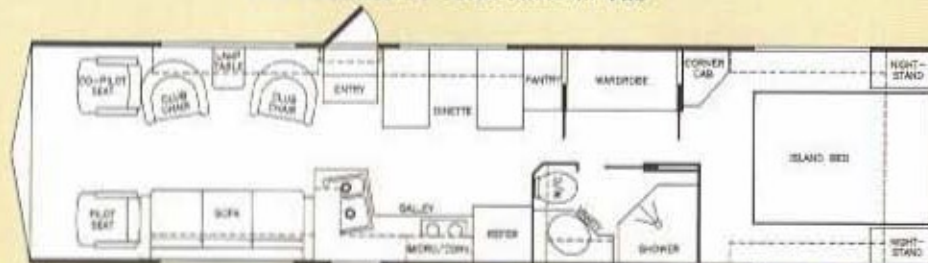
The Premier 37' Side Aisle w/Tub



OPTIONAL BATH



The Commodore 37' Center Aisle w/Garden Shower



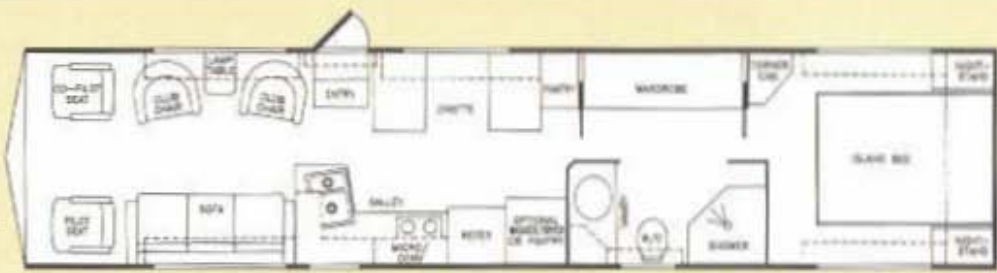
The Tycoon 37' Center Aisle with Garden Shower



The Senator 40' Center Aisle w/Garden Tub



The Monarch 40' Center Aisle w/Garden Tub



The Senator 40' Center Aisle w/Garden Shower

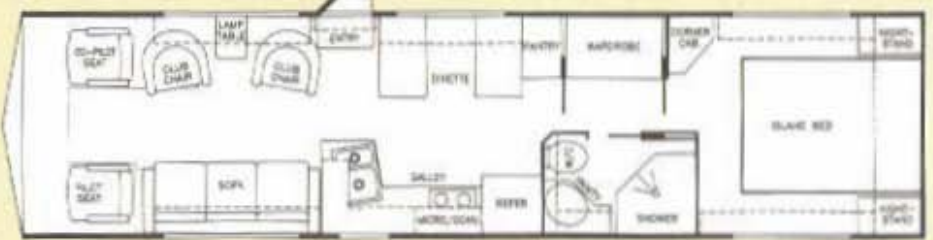


The Monarch 40' Center Aisle w/Garden Shower

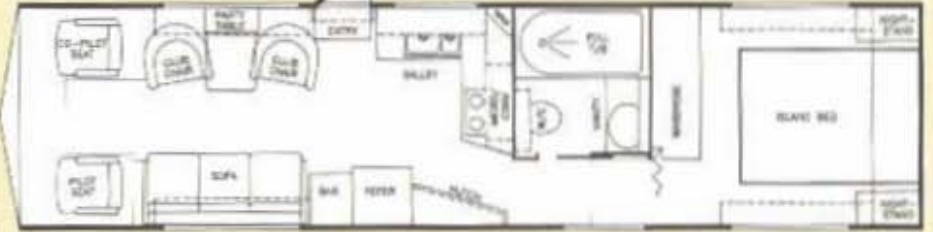


The Ambassador 40' Side Aisle w/Garden Shower

CROWN ROYALE FLOORPLANS



The Tycoon 36' Center Aisle w/Garden Shower



The Premier 36' Side Aisle w/Garden Tub

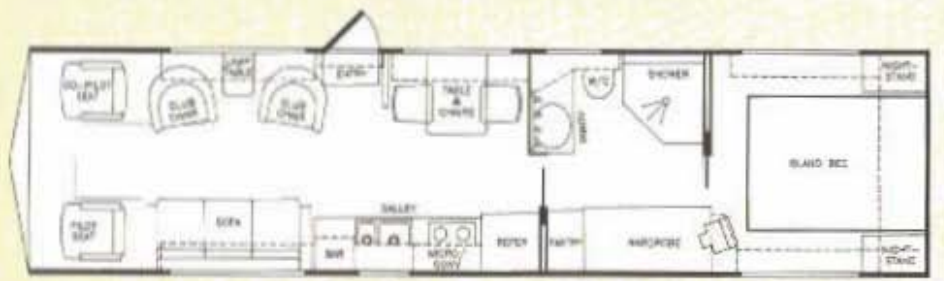


The Bishop 36' Center Aisle w/Garden Shower



Exterior Colors

SOFT MINK	CHINCHILLA	WILLOWBROOK	HEATHER AND LONDON FOG



The Commodore 36' Center Aisle w/Garden Shower