

FLEETWOOD.RV

Southwind
Storm®

1 9 9 9

NOTHING BUT SUNSHINE AHEAD.

At Fleetwood RV, we've been making America's favorite recreational vehicles for nearly 50 years. We've done it by building honest value, rugged dependability and peace of mind into every one of them. And the forecast for this year's Southwind Storm couldn't be better: record highs in comfort and value. A spacious living area, dreamy master bedroom, and unique touches like beautiful cabinetry make Storm the perfect way to travel the world — without ever leaving the comforts of home. The kitchen includes a Dometic® double-door refrigerator and Magic Chef® microwave oven. There's even a floor plan with our new EZ Glide™ Room Slide-out System that makes your Storm roomier at the touch of a button. Our EZ Store™ Storage System moves with the slide-out room, so you have easy access to storage below. Storm provides all the reliability and durability found in higher priced brands. So go ahead and plan that vacation you've been dreaming of. When you hit the road in Southwind Storm, there are plenty of beautiful days on the horizon.

1999 SOUTHWIND STORM SPECIFICATIONS

Chevrolet Chassis	29V	30H	32Y	34K	34S
Engine CID	454	454	N/A	454	N/A
Wheel Base	178"	178"	N/A	208"	N/A
GVWR lbs ¹	14,800	14,800	N/A	16,500	N/A
GCWR lbs ²	18,300	18,300	N/A	20,000	N/A
GAWR (front) lbs ³	5,500	5,500	N/A	5,500	N/A
GAWR (rear) lbs ³	10,000	10,000	N/A	11,000	N/A
Hitch Rating/Tongue wt. lbs	3,500/250	3,500/250	N/A	3,500/250	N/A
Fuel Capacity (gal/lbs)	75/450	75/450	N/A	75/450	N/A

Ford Chassis	29V	30H	32Y	34K	34S
Engine LD	6.8	6.8	6.8	6.8	6.8
Wheel Base	178"	178"	208"	208"	208"
GVWR lbs ¹	18,000	18,000	18,000	18,000	20,500
GCWR lbs ²	21,500	21,500	21,500	21,500	24,000
GAWR lbs (front) lbs ³	7,000	7,000	7,000	7,000	7,000
GAWR lbs (rear) lbs ³	11,000	11,000	11,000	11,000	13,500
Hitch Rating/Tongue wt. lbs	3,500/250	3,500/250	3,500/250	3,500/250	3,500/250
Fuel Capacity (gal/lbs)	75/450	75/450	75/450	75/450	75/450

Dimensions	29V	30H	32Y	34K	34S
Length	29' 9"	30' 9"	32' 9"	34' 3"	34' 3"
Height (w/roof A/C)	11' 10"	11' 10"	11' 10"	11' 10"	11' 10"
Width	102"	102"	102"	102"	102"
Interior Height	79"	79"	79"	79"	79"
Interior Width	96"	96"	96"	96"	96"

Liquid Capacities (gallons)	29V	30H	32Y	34K	34S
Fresh Water	80	80	80	80	80
Black Water Holding	50	42	42	46	46
Grey Water Holding	58	58	58	58	58
Appliance LPG Tank*	25	25	25	25	25

¹ GVWR (Gross Vehicle Weight Rating): Maximum permissible weight of this motor home. The GVWR is equal to or greater than the sum of the unloaded vehicle weight plus the net carrying capacity.

² GCWR (Gross Combination Weight Rating): Value specified by the motor home manufacturer as the maximum allowable loaded weight of this motor home with its towed trailer or towed vehicle.

³ GAWR (Gross Axle Weight Rating): Maximum permissible loaded weight a specific axle is designed to carry.

*Tank manufacturer's listed water capacity (WC) actual filled. LP capacity is 80% of listing due to safety shut off required on tank.

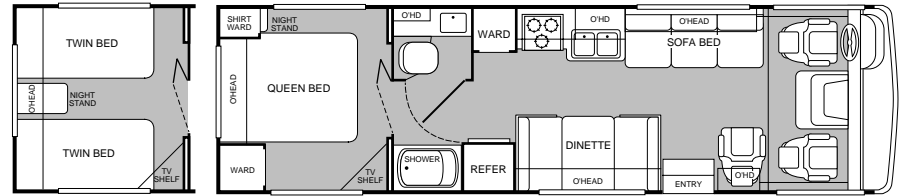
MODEL
29V

- Island queen bed
- Private toilet/shower
- Refrigerator w/pantry
- Opt'l lounge chair w/table
- Opt'l twin beds



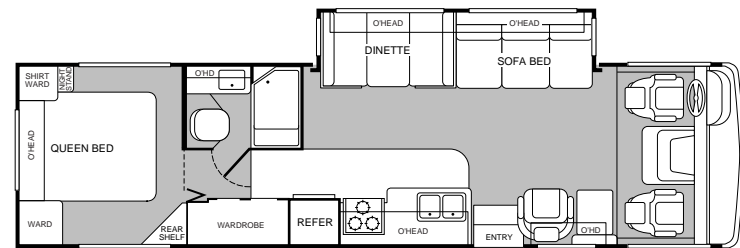
MODEL
30H

- Island queen bed
- Private toilet/tub/shower
- Swivel chair
- Sofa bed and dinette
- Opt'l twin beds



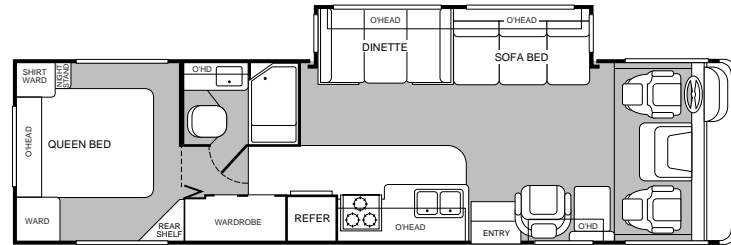
MODEL
32Y

- Island queen bed
- Private toilet/tub/shower
- Swivel chair
- Sofa bed and dinette
- Opt'l twin beds



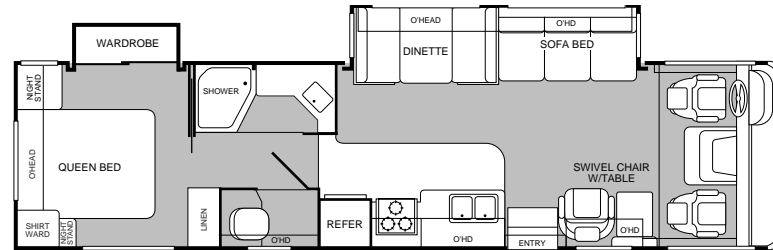
MODEL
32Y

- Island queen bed
- Private toilet/tub/shower
- Swivel chair
- Sofa bed and dinette
- Opt'l twin beds



MODEL
34S

- Living room slide-out
- Wardrobe slide-out
- Island queen bed
- Swivel chair w/table
- Private toilet



1999 SOUTHWIND STORM FEATURES AND AVAILABLE EQUIPMENT

Exterior Automotive and Electrical, *Standard Equipment*

Tinted Windshield	Undercoating	Wheel Covers
Valve Extenders (Chevy only)	Steel Surface on Bulkhead	Mud Flaps
Trailer Hitch w/4-point Electrical Hook-up	Halogen Headlights	Underfloor Spare Tire Carrier
Dual Battery Charge Control	Windshield Wipers w/Wet Arm	

Interior Automotive, *Standard Equipment*

Intermittent Wiper Control	Swivel Sun Visors w/Map Pocket	Auto A/C/Heater Combo
Engine Cover Convenience Tray	Reclining Captains Chairs	3-point Front Seat Belts
Auxiliary Start Circuit	Battery Disconnect System	Cruise Control
Driver/Passenger Magazine Racks	Radio Switch-Main/Aux.	Tilt Steering Wheel
Computer Workstation in Dash	Radio w/Cassette AM/FM/MX Electronic Tuner	

Automotive, *Options*

	29V	30H	32Y	34K	34S
Stainless Steel Wheel Simulators	Opt	Opt	Opt	Opt	Opt
Remote/Heated Ext. Rear View Mirror	Opt	Opt	Opt	Opt	Opt

Slide-out, *Options*

	29V	30H	32Y	34K	34S
Galley	N/A	N/A	N/A	Std	N/A
Living Room	N/A	N/A	Std	N/A	Std
Bedroom	N/A	N/A	N/A	N/A	Std

Exterior, *Standard Equipment*

One-piece Swingdown Engine Access Door	Full Fiberglass Front-end Cap	Gas Lift Strut Supports
Radius Door Entry w/Deadbolt Latch	Slider Windows Throughout	Roof Ladder
Steel Seal Frames	Integrated Luggage Door System	20' Sewer Hose
Continuous One-piece Bulb Seal	TV Antenna/Park Cable Recept.	Power Entry Step
Awning Rail/Drip Molding (both sides)	Lower Body Accent Paint	Porch Light
2 Colorway Graphics to Match Decor	Single Paddled Metal Latches	Entry Assist Handle

Exterior, *Options*

	29V	30H	32Y	34K	34S
Hydraulic Levelers	Opt	Opt	Std	Std	Std
Awning	Opt	Opt	Opt	Opt	Opt
Fantastic® Power Roof Vent	Opt	Opt	Opt	Opt	Opt
Satellite Dish	Opt	Opt	Opt	Opt	Opt

Electrical, *Standard Equipment*

Patio Receptacle (GFI)	Water Pump Switch	4.0kw Generator
Dash Workstation 120v Recept.	Rear TV Recept.	12v Jack
30-amp Service	120v/12v AC/CD Convert. Central Elect. Panel w/Charger	
VCR Ready	High Efficiency A/C w/Solar Charger	
Telephone Jack	Dual 6v/Deep Cycle 217-amp House Batteries	

Interior, *Standard Equipment*

2 Interior Decors	Skylight in Tub/Shower	Wall-to-wall Carpet
Vinyl Floor Covering	Solid Wood Drawers	Sink Cutting Board
Roller Guide Drawer Slides w/Transit Ship Locks	Brass Finished Cabinet Hardware	Miniblinds (metal)
Bedsread	Innerspring Mattress	Window Coverings

Interior, *Standard Equipment Cont.*

Solid Divider Doors	Trash Basket in Galley	Bright Brass Bath Accessories
Entry Rail (oak & brass)	Convertible Sofa	Large Double Stainless Steel Sink
Carpet Pad	Slide-out Dinette Bins w/Locks	

Interior, *Options*

	29V	30H	32Y	34K	34S
Glass Shower Door w/Bright Frame	Std	N/A	N/A	Std	Std
Pleated Shower Door	N/A	Std	Std	N/A	N/A
Molded Shower w/One-piece Shower Enclosure	Std	Std	Std	Std	Std
Convection Microwave	N/A	N/A	N/A	Std	N/A
Reclining Bucket Seat	Opt	Std	Std	Std	Std
VCR	Opt	Opt	Opt	Opt	Opt
Lounge Chair w/Table	Opt	N/A	N/A	N/A	N/A
Sofa & Lounge Chairs w/Table	Opt	N/A	N/A	N/A	N/A
Twin Bed w/Nightstand	Opt	Opt	N/A	Opt	N/A
Free Standing Dinette	N/A	N/A	N/A	Opt	N/A

Platform Construction and Body Structure, *Standard Equipment*

Basement Floor Configuration	Heated Water & Holding Tank Compartments			
Polyethylene Luggage Compartment Boxes	Steel I-Beams	Steel Outriggers		
Vacubond Walls w/Smooth Ext. Fiberglass	Vacubond Floor	Vibration Isolators		
Aluminum Wall/Ceiling Framing	Interlocking Aluminum Extrusions	Rubber Roof		
Radius Roof w/Ducted for A/C				

Appliances, *Standard Equipment*

Front 20" TV in Overhead	Furnace 34m BTU	Light/Power Rangehood
16" 3-burner, High-output Range w/Oven	Demand Water Pump w/Filter	Power Bath Vent
Folding Range Cover	TV Antenna	Monitor Panel
Wall Clock-Battery Operated	Microwave w/Elec. Touch Pad	Marine Toilet
6-cu. ft. Refrig. (lg. dbl. door)	6-gallon Quick Recovery Water Heater w/D.S.I.	
Single Lever Galley Faucet	Single High Efficiency A/C w/Solar Panel	
Video Control Box		

Electrical, *Options*

	29V	30H	32Y	34K	34S
ECC w/Dual A/Cs w/Gen. Upgrade	Opt	Opt	Opt	Opt	Opt

Safety Equipment, *Standard*

Smoke Detector	LPG Detector w/Auto Shut Off	Carbon Monoxide Detector
Fire Extinguisher	Emergency Exit Window	

Sleeping Accommodations, *Standard*

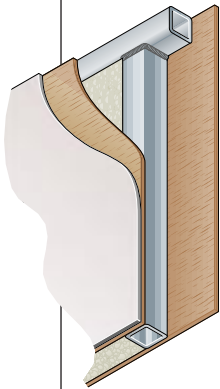
	29V	30H	32Y	34K	34S
Convertible Sofa	46"x68"	46"x72"	60"x75"	46"x72"	60"x75"
Dinette	40"x70"	40"x74"	40"x70"	40"x74"	40"x70"
Queen Bed	60"x74"	60"x74"	60"x74"	60"x74"	60"x74"

Sleeping Accommodations, *Options*

	29V	30H	32Y	34K	34S
Sofa	46"x72"	N/A	N/A	N/A	N/A
Twin Beds w/Nightstand	39"x74"	39"x74"	N/A	39"x74"	N/A

WHEN THE DUST SETTLES, THERE'S NOT AN RV IN THE WORLD THAT'S TESTED LIKE A FLEETWOOD RV.

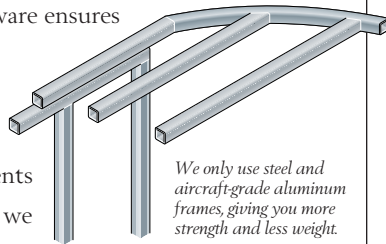
If anyone loves to tear an RV apart, it's us. Because at Fleetwood RV nothing's more important than your safety and comfort. While our improvements aren't all visible to the eye, we commit millions of dollars a year in product development and research to build what we believe are the finest RVs in the world.



Vacubond construction ensures that every roof, wall and floor is completely sealed.

It all starts with advanced computer analysis of new prototype designs. Once built, the prototypes undergo rigorous load bearing and weight distribution stress tests. Stringent load analysis software ensures improved reliability.

Then the relentless testing and re-testing of components begins. In a couple of weeks we can simulate years of real world



We only use steel and aircraft-grade aluminum frames, giving you more strength and less weight.

use. Slide-out mechanisms have to open and shut thousands of times without a complaint. Seat belts must withstand more than three-ton stress levels without a whimper. And doors have to endure tens of thousands of slammings without losing their composure.

At the end of the day, we've thrown just about anything and everything we can at our units, just to make sure we have the best designed and most thoroughly tested RVs in the world. Then we back them with a limited 1-year/3-year warranty supported by Fleetwood RV dealers throughout the U.S. and Canada. So you have what we believe to be the best-handling, safest, most comfortable RV anywhere.

Dear Friend,

Here at Fleetwood RV, we have over 200 people working on research and development. But we get our best ideas when we hit the road in our recreational vehicles. Talking to people like you and noticing for ourselves little ways to make RVing more comfortable, more convenient and more fun.



If I had two pieces of free advice to give a friend in the market for an RV, the first would be to get a Fleetwood RV. Not because we need to sell one more. Heck, we sell more than anyone else. But because I know we build the best product out there for the money.

Second, really think about your dealer. He has to be someone you trust for advice, service and accessories. Only the best get to be Fleetwood RV dealers in the first place. Then we work with them to continually improve customer satisfaction. That's why 9 out of 10 owners would recommend their Fleetwood RV to a friend and 9 out of 10 of them would also recommend their Fleetwood RV dealer.

I hope that helps. And I also hope I see you out there, somewhere in this beautiful world, enjoying your new Fleetwood RV while I'm out there doing the same.

John C. Crean

Chairman Emeritus and Founder
Fleetwood Enterprises, Inc.

Your local Fleetwood RV dealer is:

If your local dealer is not indicated, write to the address below, or call us toll free 24 hours a day at 1-800-444-4905. Or visit our Website at <http://www.fleetwood.com>

FLEETWOOD RV

America's Favorite Recreational Vehicles

Fleetwood Enterprises, Inc.
P.O. Box 2875, Van Nuys, CA 91404-2875

Product information and photography included in this brochure were as accurate as possible at the time of publication. Subsequent refinements may be evident in the actual product. Prices and specifications are subject to change without notice. All fuel and liquid capacities are approximate and dimensions are nominal. Fleetwood has designed its motor home brands to provide a variety of potential uses for its customers. Each unit features the optimum storage, fluid, seating and sleeping capabilities. Though the customer enjoys this potential, he/she also has the responsibility to select the proper combinations of loads without exceeding the chassis weight capacities.