

TIOGA
CLASS C

BEACH. MOUNTAINS. DESERT. YOUR
"TO DO" LIST JUST GOT MORE FUN.



2008 Tioga

FLEETWOOD

BECAUSE NOBODY HAS FOND MEMORIES OF WEEKEND CHORES.

There's nothing better than enjoying time with your family in the great outdoors — and it's easier in Tioga. Tioga offers you the fun of the open road with the comforts of home. You can take the whole gang along, with floor plans ranging from 23 to 32 feet, and plenty of places to sleep, including queen beds, cabover bunks, sofa sleepers and convertible dinettes. Just as importantly, there's plenty of storage inside and out, even for big items like helmets, life jackets and fishing gear. You can even tow your big toys, such as a boat or ATVs†. So what are you waiting for? The weekend's almost here.

† Refer to footnote on the Weights and Measurements page for information.



RANGER/ TIOGA/ SL

Which Tioga is Right for You?

Tioga Ranger



Tioga



Tioga SL





Packed with features at a value price, the Tioga Ranger delivers a lot of fun for your buck. It's perfect for families just entering the comfortable, convenient world of RVing. After you pull into your favorite camping site, imagine whipping up an easy dinner in a brand new galley complete with a refrigerator, microwave, stove with oven, and tons of storage. There's plenty of room to eat...as well as sleep, relax and play, thanks to the spacious design. It's just another way that Tioga Ranger gives you more for your money.

TIOGA RANGER



For more than 35 years, the Fleetwood Tioga has consistently raised the standard for family camping. Every year, Fleetwood engineers perfect the well-known Tioga to meet the needs of today's families. The 2008 Tioga is no exception, boasting innovative floor plans, including an optional media center that comes in handy on a rainy spring day. In fact, you can camp in most any season, thanks to Tioga's heated basement. With features like these, you can see why Tioga remains one of the best-selling motor homes on the market.

TIOGA



Some families like a dash of luxury with their adventure. If that's you, the Tioga SL is your motor home. Everything is a bit more upscale in this sophisticated beauty. You'll enjoy extra indulgences, from the supple Ultraleather™ driver and passenger seats to the standard 19" LCD TV to the larger galley appliances. Every model offers a single or double slide-out to provide unparalleled room inside. Optional full-body paint adds a touch of prestige to the Tioga SL, our premium Tioga for those who like the best of everything.

TIOGA SL



YOUR HOME IN THE RANGER. TIOGA RANGER, THAT IS.

Now you can enjoy the comforts of home, wherever you are. Tioga Ranger is our value-priced Class C motor home that lets you spend quality time together – without spending a bundle. You get a lot for your money, because it's packed with handy conveniences and safety features in a family-friendly design. On top of that, it looks great, from the sporty wheel covers to the tinted windows to the cool front cap. So saddle up the family for adventure in Tioga Ranger.

Quality



There's no cutting corners. Skilled craftsmen build every Fleetwood RV for maximum durability and longevity.



TIOGA RANGER



Tioga Ranger 31W shown in Desert Sand interior décor with Windsor Birch wood cabinetry.

Why Buy Tioga Ranger?

Great Looks at a Value Price

It looks stylish with its glossy fiberglass exterior and one-piece molded fiberglass front cap. But it's our most affordable Class C motor home.



The Dinette seats four, with enough room to avoid elbow wars. It's under a big picture window, perfect for watching the wildlife...squirrels, birds, or roving packs of kids.



The Dinette Table slides down easily to convert into a bed. Underneath, spacious storage compartments are the perfect place for games, pet food or toys.



A Comfy Bed for a tired camper is ready in a flash. Sweet dreams.

Safety is Built Right In

We provide peace of mind with front driver and passenger air bags, 4-wheel disc brakes, seat belts with pre-tensioners, and more.

Family-Friendly Galley

The fully equipped kitchen makes it easy to feed your family, with ample storage and a roomy dinette.

Space to Stretch Out

Thanks to Tioga Ranger's clever design, there's enough space for everyone to have their own. That keeps family peace.

Six Floor Plans

Choose the layout you like, ranging from 23 feet to 32 feet. Whatever size your family, there's a Tioga Ranger to fit your needs.



The Refrigerator holds 6 cubic feet of food, so you can take that whole gallon of milk for breakfast cereal. There's even a freezer for ice cream. And it's all nicely hidden behind raised panel doors.



The Galley includes everything you need to prepare a family feast: a big refrigerator, three-burner stove, oven, microwave, large stainless steel sink, and high-rise faucet. There's even wiggle room for your toes under the cabinets, thanks to handy toe kicks.

PUT A WHOLE NEW SPIN ON EATING OUT.

Now you can eat out and have a home-cooked meal at the same time. The galley in Tioga Ranger has been designed to make it easy to whip up flapjacks for breakfast, or even bake a batch of hot cookies.



Overhead Cabinetry is deep enough for full-size plates, so you don't have to eat mini-meals. And the shelves are adjustable – that's something many of our competitors don't offer. Best yet, there's plenty of storage space for your dishes, spices, cookware and food.



Pots and Pans Drawer is deep enough to hold your family-sized cookware. And the fully extending drawers allow you to store things at the very back.



TIOGA RANGER



WE THOUGHT AHEAD, SO YOU WON'T BUMP YOURS.

Tioga Ranger was cleverly designed to create as much space as possible for your family to live in. The tall ceilings give a wide-open feel, and the overhead bunk offers enough room to sit up without bumping your noggin. For maximum space, several models feature a slide-out. We designed the entire Tioga line with plenty of space – it's the key to enjoying time together.

The Cabover Bunk with TV is not only a comfortable double-size bed, it's a quiet place to hang out. Or, you can watch TV on the optional 19" LCD widescreen TV with a remote and DVD player. Put on a movie, stretch out and enjoy.

The Bedroom provides that precious commodity: privacy for parents. Pleated shades soften the moonlight, while mom and dad relax on a queen-size innerspring mattress (select models). Or, if you've got a big family or lots of friends, choose the 29V model with optional double bunk beds instead of the queen bed.

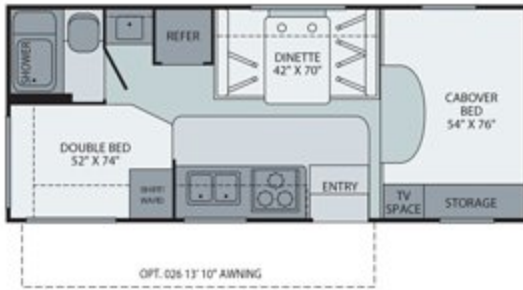


The Bathroom has to accommodate a whole family, so we gave it lots of counter space, a large medicine cabinet to hold your grooming supplies, a good-sized sink and shower, a china bowl toilet, and the most important thing....a lock on the door.



TIOGA RANGER FLOOR PLANS

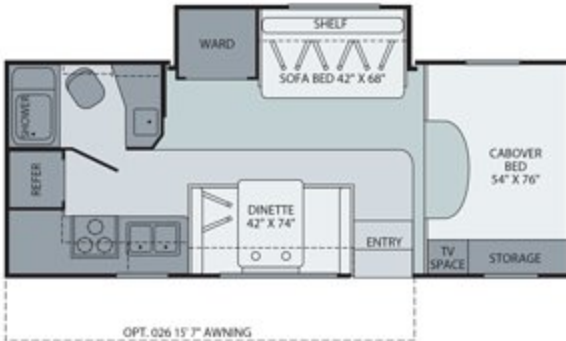
22B



- Compact floor plan has lots of sleeping locations
- Very easy to drive and park

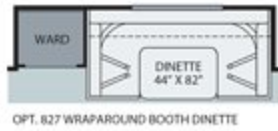
Interior Storage Capacity: 48 cu. ft.
Exterior Storage Capacity: 30 cu. ft.

23R



- The slide creates a large living area
- Spacious, self-contained bathroom

Interior Storage Capacity: 47.5 cu. ft.
Exterior Storage Capacity: 8 cu. ft.



OPT. 827 WRAPAROUND BOOTH DINETTE

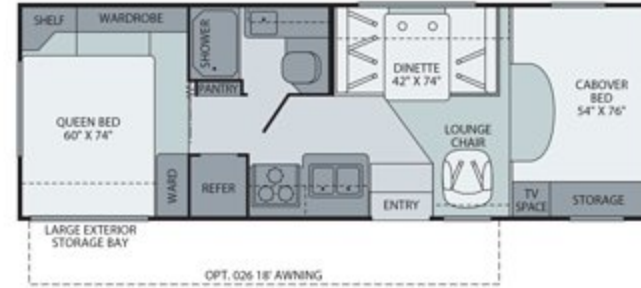
25G



- Cozy U-shape dinette option
- Large queen bed
- Lots of interior storage capacity

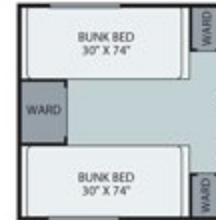
Interior Storage Capacity: 84 cu. ft.
Exterior Storage Capacity: 34 cu. ft.

26Q



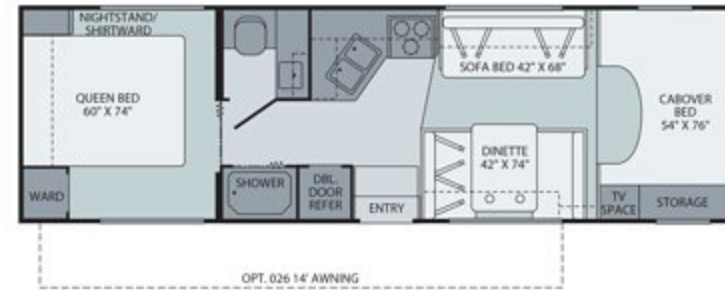
- Huge pass-through rear storage compartment
- Great drivability and camp friendly

Interior Storage Capacity: 57 cu. ft.
Exterior Storage Capacity: 104 cu. ft.



OPT. 863 DOUBLE BUNK BEDS

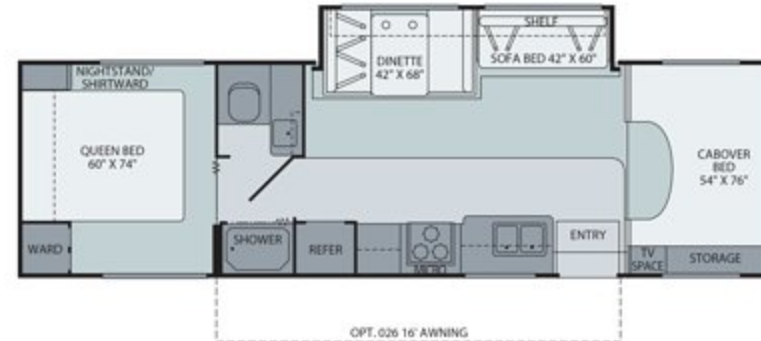
29V



- Largest, full featured floor plan without a slide-out
- Walk-around, large queen bed

Interior Storage Capacity: 85 cu. ft.
Exterior Storage Capacity: 66 cu. ft.

31W



- Huge sofa and dinette slide-out for maximum living space
- Walk-around, large queen bed

Interior Storage Capacity: 101 cu. ft.
Exterior Storage Capacity: 71 cu. ft.

INTERIOR DÉCORS

STARLIGHT

Living/Dining Room



Dinette Cushions



Sofa

Bedroom



Bedsread



Headboard

DESERT SAND

Living/Dining Room



Dinette Cushions



Sofa

Bedroom



Bedsread



Headboard

WOOD FINISHES



Plantation Cherry



Windsor Birch

EXTERIOR COLORS

Starlight



Desert Sand





TIOGA. ADVENTURING MADE EASY.

Your family is always up for adventure. So is Tioga. It's ready to go any time of year, with a heated basement for extended season camping. So you can enjoy the green valleys in April, blue skies in July, fallen leaves in autumn, and even snow flurries in December. (Good thing the plumbing system is designed to withstand cold temperatures.) Better yet, with up to 5,000 lbs. capacity[†], you can tow the right toys for the season, such as your boat or snow mobile. No matter when adventure calls, Tioga is ready.

[†] Refer to footnote on the Weights and Measurements page for information.

Trust



More people trust Fleetwood. After all, we've spent over 50 years perfecting RVs, earning the loyalty of generations of RVers.



TIOGA



The Sofa with Table comes in handy if you're feeding a big crowd (31M model only). Seat four at the dinette and two or three on the sofa, and it's suppertime! The sofa faces the dinette so you can still have family conversation during meals, and the table stows away afterwards.



The Under Dinette Storage uses handy pull-out baskets to make it easy to retrieve your games, crafts or butterfly nets.



Why Buy Tioga?

Just Like Home

The interior of Tioga features comfy furniture, beautiful wood cabinetry, and bathroom fixtures that feel like home.



Tioga 31M shown in Sage Mist interior décor with Windsor Birch wood cabinetry.

Many Floor Plans

Choose from six different floor plans and a wide range of options to build the Tioga that's perfect for you.

Quality Construction

Fleetwood is known for excellent quality construction. You'll wish everything were built like your motor home.

Made for Adventure

Enjoy extended season camping, and tow your toys along with Tioga's big towing capacity!

Kitchen Conveniences

The family-friendly galley is stocked with extras such as a spice rack, sink covers, silverware drawer, cutting board and more.

FLEETWOOD IS FIRST IN BUILDING RVs TO LAST.

Fleetwood helped pioneer the industry over a half a century ago, and we still lead the way in building quality motor homes from the inside out. For example, the Vacu-bond® walls, floor and ceiling offer extreme durability – and provide excellent temperature and noise insulation too. From the solid wood drawers to the durable Flexsteel® furniture, you can count on quality in your Tioga.



The Cab-Over Area, with patented slider bunk, is a teenager's dream with the optional 19" LCD TV with remote and DVD player, all surrounded by a full-size mattress. Teens may never leave the bunk. If you don't need the extra sleeping space, select the optional Cabover Entertainment System featuring a 26" LCD TV with home theater system.



The Sofa Bed makes it okay to fall asleep on the couch. But this time, you'll have more space to stretch out, after the sofa back folds down.

The Dinette becomes a bed when the table swings down, and the cushions make into a mattress. Throw on some sheets or a sleeping bag, and call it a night. No eating in bed...save that for morning!





The Under-Bed Storage provides a whole lotta space for you to fill with extra sheets, towels, games, crafts or whatever you like. You'll never think, "I wish I would have packed that..." because you can!



The Wardrobe and Desk Area do double-duty. The wardrobe holds your hanging clothes above, and folded clothing below. A big mirror shows you how your outfit looks. The desk area (31M model only) helps you take care of business, even if your business is mapping out your next adventure. It features an outlet that's ideal to charge your cell phone and a cabinet with shelves to organize important papers.

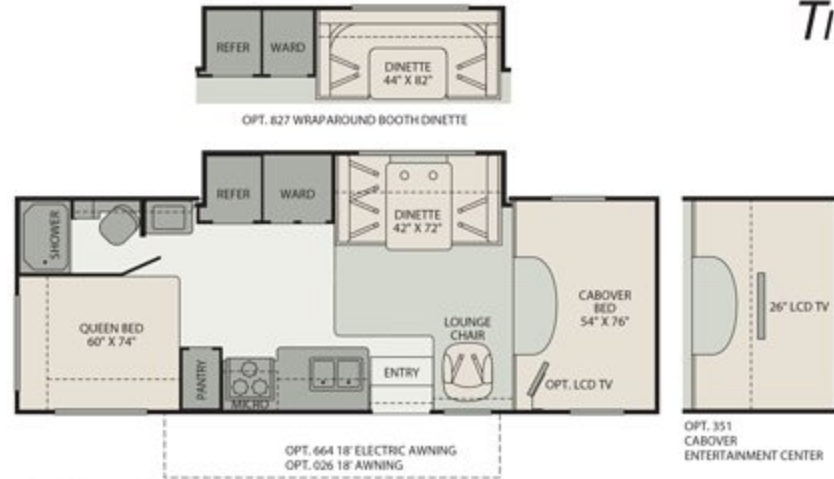
The Bedroom offers a luxurious queen-size, high quality innerspring mattress and overhead storage for books, perfect to enjoy by the halogen reading lights. And you can each set your cup of cocoa upon his/her nightstands (select models).



The Bathroom is deluxe, with a roomy shower, vanity cabinet, sink, mirror, medicine chest and china toilet. Best yet, you'll be comfortable thanks to the heat register and AC vent that keeps the temperature just right.

TIOGA FLOOR PLANS

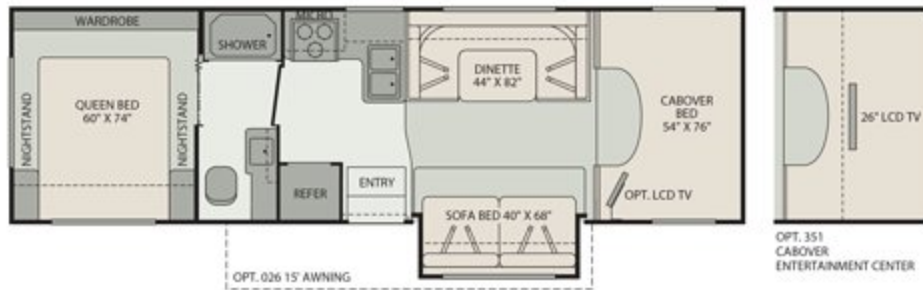
26J



Interior Storage Capacity: 122 cu. ft.
Exterior Storage Capacity: 32 cu. ft.

- Residential style U-shape dinette option
- Large queen bed
- Large wardrobe

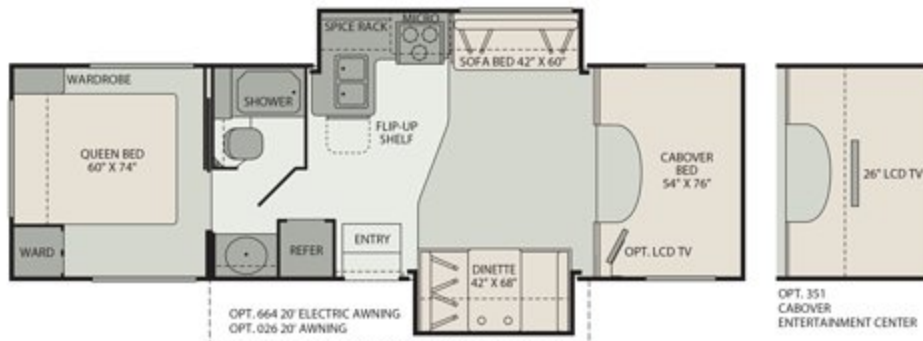
28T



Interior Storage Capacity: 105 cu. ft.
Exterior Storage Capacity: 67 cu. ft.

- Huge conversation area
- Lots of exterior storage space

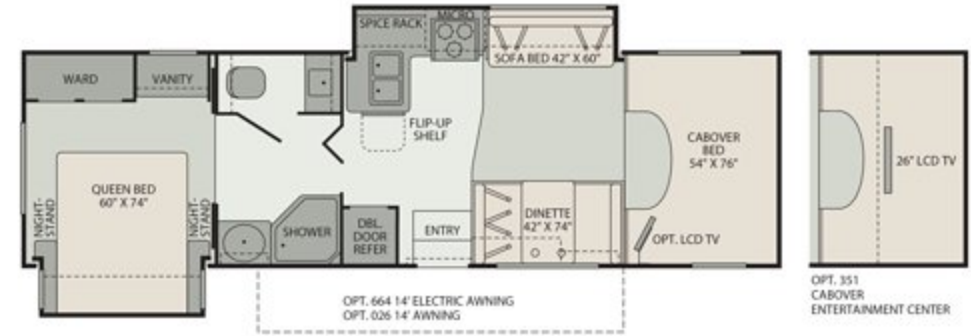
30H



Interior Storage Capacity: 70 cu. ft.
Exterior Storage Capacity: 78 cu. ft.

- Huge conversation space overlooks patio area
- Pass-through compartment in the rear

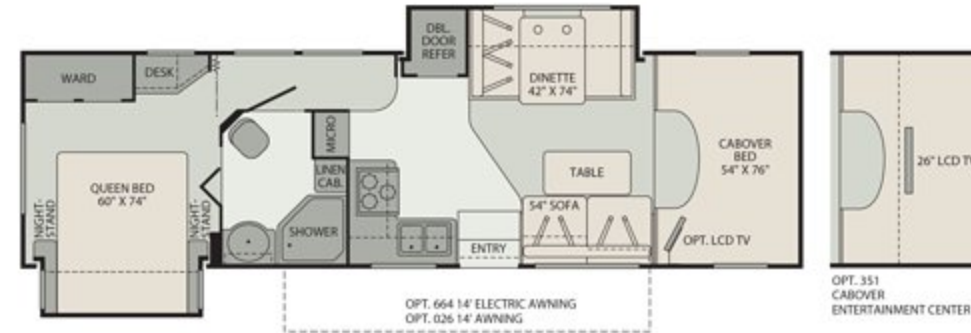
31K



Interior Storage Capacity: 99 cu. ft.
Exterior Storage Capacity: 57 cu. ft.

- Spacious open feel with L-shape galley
- Two lavvy sinks for maximum versatility

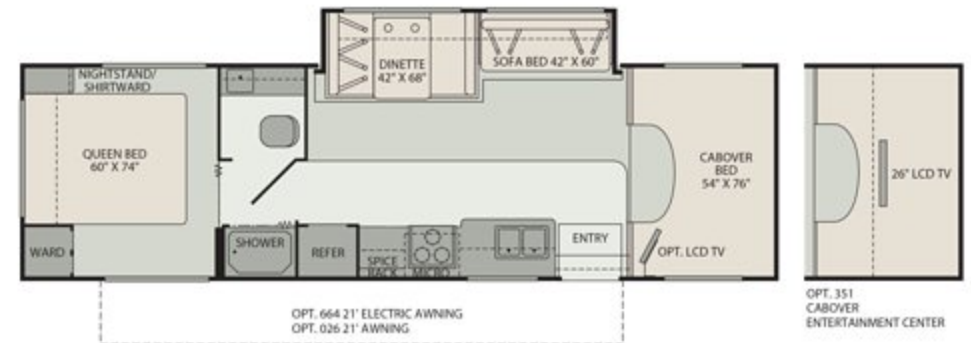
31M



Interior Storage Capacity: 122 cu. ft.
Exterior Storage Capacity: 71 cu. ft.

- Side aisle space and privacy
- Residential size bathroom

31W



Interior Storage Capacity: 101 cu. ft.
Exterior Storage Capacity: 71 cu. ft.

- Huge sofa and dinette slide-out for maximum living space
- Walk-around, large queen bed

INTERIOR DÉCORS

CANYON

Living/Dining Room



Dinette Cushions

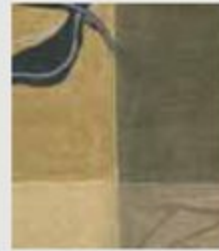


Sofa



Ultraleather™ Driver & Front Passenger Seats (optional)

Bedroom



Bedspread & Headboard



Headboard & Throw Pillows

SAGE MIST

Living/Dining Room



Dinette Cushions



Sofa



Ultraleather™ Driver & Front Passenger Seats (optional)

Bedroom



Bedspread & Headboard



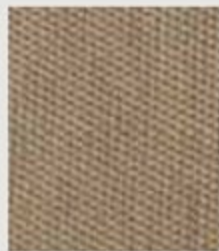
Headboard & Throw Pillows

MOCHA JAVA

Living/Dining Room



Dinette Cushions



Sofa



Ultraleather™ Driver & Front Passenger Seats (optional)

Bedroom



Bedspread & Headboard



Headboard & Throw Pillows

WOOD FINISHES



Plantation Cherry



Windsor Birch

TIOGA

EXTERIOR COLORS

Canyon



Sage Mist



Mocha Java





BREATHTAKING SCENERY. INSIDE TIOGA SL, THAT IS.

While Mother Nature has a lot to offer, Tioga SL offers remarkable beauty of its own. As the premium member of the Tioga family, Tioga SL features sophisticated style and high-end features, including its Ultraleather™ driver and passenger seats, more luxurious fabrics and upgraded carpeting. There's more of everything: more handy features, more space, and more overhead storage. Now that's impressive.

Passion



We're truly passionate about the RV lifestyle. Fleetwood was founded by RV enthusiasts, and that tradition continues today.



TIOGA SL



Tioga SL 31W shown in Quartz interior décor with Windsor Birch wood cabinetry.

Why Buy Tioga SL?

Upscale Styling

Everything's more deluxe, from the Alcoa® aluminum wheels to the optional full-body paint to the smart interior décor.



The **Driver's Cockpit** makes your long drive a pleasure, with a luxurious Ultraleather™ Flexsteel® driver's seat with armrests, and integrated cupholders for that steaming cup o' joe. The miles go by fast thanks to a CD/DVD player, and AM/FM radio that's ready for your MP3 player. It's also ready for you to enjoy satellite radio (optional).



The **Color Back-Up Monitor** (optional) helps you maneuver with ease. You can also hear directions from your assistant thanks to one-way audio.

TIOGA SL

Upgraded Galley

Enjoy a larger refrigerator, a convection microwave, a whole coach water filtration system and more.

Tons of Exterior Storage

There's room for your cooler, camping chairs, fishing gear, fire pit and more with basement storage.

Extended Season Camping

Because the holding tanks are heated and enclosed, you can enjoy the great outdoors in any season.

Expansive Space

All models have a single or double slide-out to give you more space to relax in the great indoors.



More Overhead Storage on the Tioga SL means you can pack more stuff! You can adjust the shelves to accommodate your things, and they'll stay in place better thanks to the shelf lining.



The Galley is big enough to cook for a big crew – or just two. And you can cook with clean, filtered water thanks to the water filtration system that provides better water throughout the coach. (So you can brush your teeth and shower with filtered water, too.)

MEET THE KITCHEN HELP.

Great appliances make cooking easier, and Tioga SL is chockfull of them. It includes the appliances found in the Tioga and more, such as a convection microwave that cooks fast and bakes like an oven. And the Dometic® refrigerator is 30% larger, holding 8 cubic feet of your favorite foods.



The Dinette is upholstered in such nice fabric, you may be afraid to eat there. Don't worry, its good looks are highly durable. The picture window lets you enjoy dinner with a view that changes as you travel.

THE BEDROOM IS JUST THAT. A BED WITH LOTS OF ROOM.

We've added something intangible, yet important into Tioga SL: space. And lots of it. All of the models come either with single or double slide-outs, creating more room instantly. That kind of real estate is especially beneficial in the bedroom, where many competitors' models feel closed in. Tioga SL gives you room to spread out and relax.



The Mirrored Wardrobe keeps your clothes neatly organized. Two roomy areas hold your shirts and pants on hangers, while drawers below keep his and her socks separated.

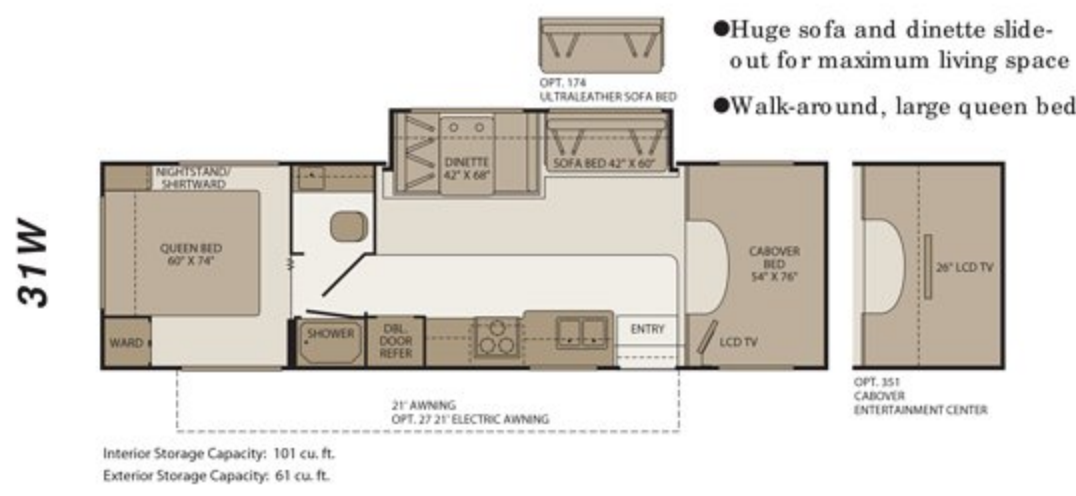
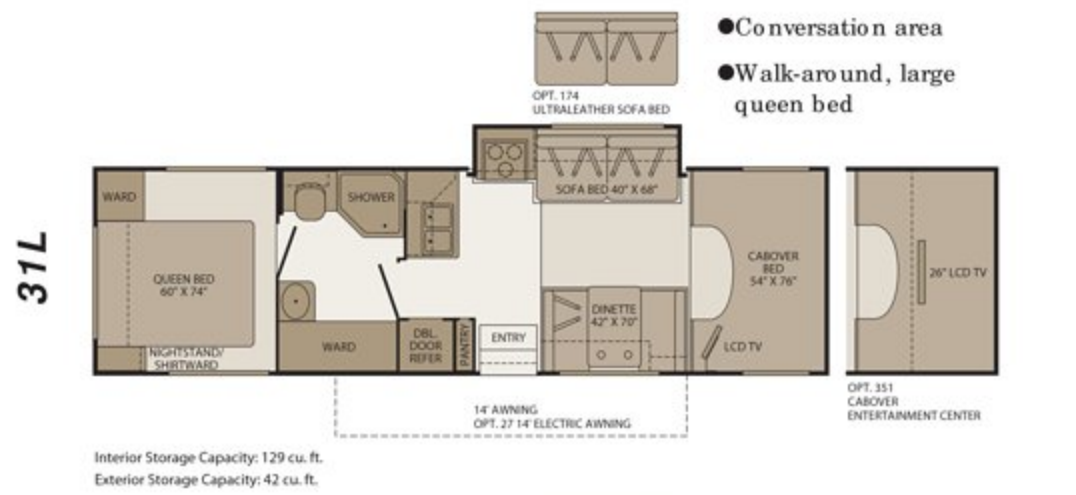
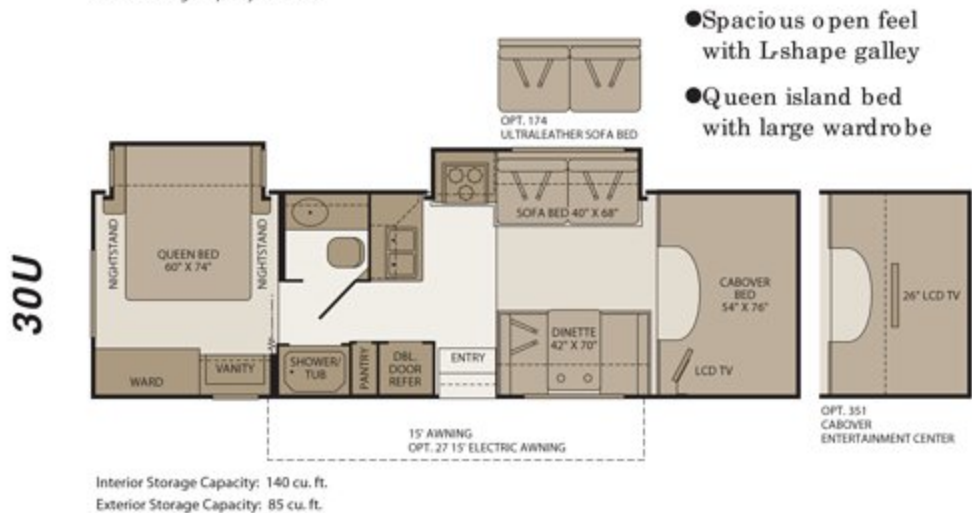


The Bathroom features a sink with plenty of counter space so it's easier to wash your hands or shave. In fact, everything in here is designed for your convenience, from the towel bars to the toilet paper holder that's recessed so it won't catch on your clothing.

The Bedroom boasts a spacious, queen-size innerspring mattress with a plush comforter and pillow shams. Just pull down the day/night pleated shades for an afternoon nap, or to block out the full moon at night.



TIOGA SL FLOOR PLANS



Seatbelt configuration may vary depending on options chosen.

EXTERIOR COLORS - FIVE FULL-BODY PAINT OPTIONS

For standard exterior choices visit our website at www.fleetwoodrv.com.

Blue Topaz



Satin Steel



Silver Leaf



INTERIOR DÉCORS

BAHAMA BLUES

Living/Dining Room



Dinette Cushions



Sofa



Ultraleather™ Driver & Front Passenger Seats, Sofa (optional)

Bedroom



Bedspread & Headboard



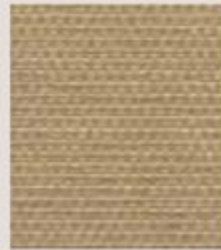
Headboard & Throw Pillows

CASHMERE

Living/Dining Room



Dinette Cushions



Sofa



Ultraleather™ Driver & Front Passenger Seats, Sofa (optional)

Bedroom



Bedspread & Headboard



Headboard & Throw Pillows

QUARTZ

Living/Dining Room



Dinette Cushions



Sofa



Ultraleather™ Driver & Front Passenger Seats, Sofa (optional)

Bedroom



Bedspread & Headboard



Headboard & Throw Pillows

WOOD FINISHES



Plantation Cherry



Windsor Birch

TIOGA SL

Platinum



Raceway Red



Service



Help is nearby. When you need an upgrade or repair, you'll find facilities all across North America and more than 1,000 dealers ready to assist you.

FIT IN LOTS OF STUFF. WITHOUT STUFFING IT IN.

When you go camping, you like to keep busy – hiking, fishing, biking, you name it. That's why Tioga is designed with lots of exterior storage to hold your gear. Sure, you like to sit around sometimes too. Good thing there's room for camp chairs and a portable fire pit.



The Exterior Entertainment Center (optional on SL and select Tioga models) lets you add your own soundtrack to the outdoors. It includes an AM/FM radio with CD player and speakers. Let the crickets chirp with the Beatles!



The Rear Vision Camera (optional) lets you see behind the coach when you're backing up, and hear directions from your assistant with one-way audio.



The Rear Fuel Fill (select Tioga and SL models) is located in the back, so you can pull into any pump at the gas station and refuel.



Abundant Storage holds your coolers, tackle box, inflatable raft, shade tent, or other jumbo items.



The EZ Store Compartment (select Tioga and SL models) is great for bigger gear. It's called EZ because the compartments move with the slide-out, so you don't have to stoop underneath to get your stuff.

EXTERIOR FEATURES - TIOGA RANGER

- 1 **Drip Rail Moldings** channel water off the Ranger at the front and rear, preventing streaks on the sidewalls.
- 2 **Powder-Coated Steel Running Boards** are sleek and stylish.
- 3 **One-Piece Molded Fiberglass Front Cap** is aerodynamic and attractive.
- 4 **Patio Awning** (optional) provides outdoor shade on a sunny day.



Tioga Ranger shown in Starlight exterior graphics.

EXTERIOR FEATURES - TIOGA

- 1 **Basement Storage** gives you a ton of room to store gear and toys.
- 2 **Heated Holding Tanks** help prevent freezing for extended season camping.
- 3 **Luggage Doors** feature single-paddle latches with gas-assist struts so they can be opened with one hand, and stay open on their own.
- 4 **Power Entry Step** automatically extends so you don't have to manually pull the step out every time you park.



Tioga shown in Sage Mist exterior graphics.

CONSTRUCTION DETAIL

- 1 FLEETWOOD'S TUFF-PLY ROOFING TECHNOLOGY is one of the most durable roofing materials on the market and also resists radiation by reflecting sunlight to reduce chalking. White roof material minimizes heat build-up, keeping the temperature cool and comfortable.
- 2 RELIABLE TUFFPEX PLUMBING runs throughout each vehicle creating a durable seal on all internal tubing. TuffPEX plumbing is tough, can withstand cold temperatures, is flexible and corrosion resistant. The TuffPEX system is an industry leader in quality plumbing.



- 3 TUFF-COAT® FIBERGLASS COMPOSITE resists UV rays, cracks and impacts. Fleetwood uses one seamless, solid piece of exclusive Tuff-Coat® fiberglass composite for each outer wall.
- 4 VACU-BOND® SIDEWALLS, FLOORS AND CEILINGS ensure a strong, weather-resistant structure, framed in aluminum or steel. The Vacu-bond® process is unmatched by many competitors.
- 5 HIGH DENSITY BLOCK FOAM INSULATION is precisely cut to fit between framing members. This insures maximum insulation throughout the vehicle.

Drawings are for illustrative purpose only to highlight aspects of motor home construction. Actual motor home design depends on model and is subject to change.

Safety



You've got precious cargo. So we've engineered dozens of innovative safety features into our motor homes to give you more peace of mind.

WE PLAY IT SAFE. SO YOU CAN PLAY SAFELY.

Fleetwood's team of engineers has incorporated dozens of safety features into Tioga. For example, each model is fully equipped with multiple seatbelts with pre-tensioners, front driver and passenger air bags, 4-wheel disc brakes with 4-wheel ABS, a fire extinguisher and smoke detector. If you are traveling with children, you'll appreciate the heavy-duty entry door latch that has been designed to keep you safe and give you more peace of mind.



TIOGA SL

- 1 The **Exterior Shower** rinses mud off your waders, and frog-catching kids.
- 2 **Exterior Awning** creates a ready-made "front porch" for you to relax in the shade.
- 3 **Alcoa® Aluminum Wheels** let you roll in style.
- 4 **Power Mirrors** are heated to remove condensation, steam or fog.



Tioga SL shown in Satin Steel optional full-body paint.

2008 TIOGA RANGER

STANDARD FEATURES

INTERIOR

Throughout

- Complete TuffPEX Plumbing System
- 12V Water Pump, Demand Operation
- 13,000 BTU Conventional Air Conditioner (22B, 23R, 25G)
- 13,000 BTU Ducted Air Conditioner (26Q)
- 15,000 BTU Ducted Air Conditioner (29V, 31W)
- 30,000 BTU Furnace, Wall Mounted Thermostat
- 6 Gallon Water Heater, Electronic Ignition, Propane
- Hardwood Overhead Cabinet Doors w/Raised Panel
- Auxiliary Battery, Disconnect Switch on Monitor Panel
- Deluxe Roller Bearing, Full Extension Drawer Guides & Transit-Ship Locks
- Water Pump w/On/Off Switches at Galley & Lavy
- Quality Constructed Furniture by Flexsteel®
- Water Heater Bypass Valve Fresh Water System Winterization
- Central Monitor Panel
- GFI Circuit Protection
- Pleated Shades in Living Room & Bedroom

Driver Convenience

- 3 Point Seat Belts at Driver & Front Passenger Seats
- In-Dash AM/FM/Radio w/CD Player & 4 Speakers
- Power Windows & Door Locks
- 54" X 76" Cabover Bed with Privacy Curtain, Roof Vent & Sliding Side Windows
- Cabover Bunk Ladder
- Driver/Front Passenger Airbag Supplemental Restraint System
- Cockpit Area w/Tilt Wheel, Cruise Control, Dome Light, Beverage Cup Holders, Map Pocket

Living Room

- Ceiling Lights w/Wall Switches (Entry & Bath)
- Dinette w/2 Cup Holders, Convertible for Sleeping
- Sofa Bed (23R, 29V, 31W)
- Swivel Base Lounge Chair w/Dual Lock Position (26Q)

Galley

- 3 Burner Range w/High Output/Piezo Ignitor & Oven
- Dometic® 6 cu.ft. Refrigerator/Freezer
- Real Wood Drawers
- Microwave Oven w/Electronic Touch Pad
- Raised Panel Refrigerator Inserts
- Rangehood w/Light & Fan
- Residential Size Double Bowl Sink

Bedroom

- Bedspread w/Reverse Pillow Shams
- Roof Vent (Select Models)
- Wall Space for TV w/AC Receptacle & Cable Jack
- Decorative Reading Lights
- Queen Bed w/Innerspring Mattress (Select Models)

Bathroom

- Bath Door w/Residential Passage Lock and Towel Bars
- China Bowl Toilet w/Hand Sprayer
- Medicine Cabinet w/Wood Construction
- Shower Head w/Flexible Hose Extension
- Skylight/Roof Vent w/12V Fan
- Wall Mounted Mirror
- Molded ABS Shower/Tub w/Surround
- Residential Style Faucet w/Large Sink

EXTERIOR

Throughout

- High Gloss Tuff-Coat® Smooth Fiberglass Exterior
- Large 1" (Inside Diameter) Water Tank Drain
- Sewer Hose Compartment
- EZ Glide® Slide-Out Room (Select Models)
- Debris Awning w/All Slide-Out Rooms
- Trailer Hitch w/7 Pin Electrical Hook-Up†
- Auxiliary Emergency Start Assist Switch on Dash
- Deluxe Wheel Covers
- 12V Auxiliary Battery

Body Structure

- One-Piece Molded Fiberglass Front End Cap
- Vacu-bond® Hull Lamination Process
- Vacu-bond® Floor
- Royal Tuff-Ply Radius Roof w/Ducted A/C
- Sidewalls Framed with 1 1/2" Aluminum Tubing
- Corrosion Resistant Aluminum Tube Hull Framing
- Molded Rear Wheel Trim Flares
- Steel Powder Coated Rear Bumper
- Powder Coated, Steel Running Boards
- 26" Wide Radius Corner Entry Door w/Window

OPTIONS

INTERIOR

- Vinyl Flooring Throughout
- 19" LCD Widescreen TV w/Remote & DVD Player
- Satellite Radio Ready
- Whole Coach Water Filtration System
- Power Roof Fan-Tastic® Vent Fan
- Double Bunk Beds w/Cushions (29V)
- Glass Shower Door Enclosure (Select Models)

EXTERIOR

- Dual Pane Windows
- Onan® 4.0kW Microquiet Generator
- Patio Awning
- Full Size Spare Tire w/Carrier (Select Models)
- Full Size Tire (Select Models)
- Holding Tank Heater (Select Models)
- Rear Ladder
- Wash Unit w/Faucet, Flexible Shower Hose (Select Models)
- Dual 6V Deep Cycle Auxiliary Batteries w/Slide Tray
- Stainless Steel Wheel Liners
- Power Electric Step
- Breakaway Side Mirrors w/Power Adjust & Heat Control
- Rear Vision Camera

2008 TIOGA

STANDARD FEATURES

INTERIOR

Throughout

- Complete TuffPEX Plumbing System
- 12V Water Pump, Demand Operation
- 15,000 BTU Ducted Air Conditioner
- 30,000 BTU Furnace, Wall Mounted Thermostat
- 6 Gallon Water Heater, Electronic Ignition, Propane
- Arch Hardwood Overhead Cabinet Doors w/Raised Panel
- Auxiliary Battery, Disconnect Switch on Monitor Panel
- Carpet w/Pad & Vinyl Flooring in Galley, Lavy & Entry
- Deluxe Roller Bearing, Full Extension Drawer Guides & Transit-Ship Locks
- Water Pump Controller w/On/Off Switches at Galley, Lavy & Service Compartment
- Quality Constructed Furniture by Flexsteel®
- Water Heater Bypass Valve Fresh Water System Winterization
- Central Monitor Panel
- GFI Circuit Protection

Driver Convenience

- 3 Point Seat Belts at Driver & Front Passenger Seats
- In-Dash AM/FM/Radio w/CD Player & 4 Speakers
- Power Windows & Door Locks
- 54" X 76" Cabover Bed with Patented Slider Bunk Operation, Privacy Curtain, Roof Vent & Sliding Side Windows
- Cabover Bunk Ladder
- Flexsteel® Adjustable/Reclining Bucket Seats w/Armrest (Ford®)
- Driver/Front Passenger Airbag Supplemental Restraint System
- Cockpit Area w/Tilt Wheel, Cruise Control, Dome Light, Beverage Cup Holders, Map Pocket

Living Room

- Ceiling Lights w/Wall Switches (Entry & Bath)
- Day/Night Pleated Shades
- Dinette w/2 Cup Holders, Convertible for Sleeping
- Large Viewing Window at Dinette
- Sofa Bed w/Armrests
- Swivel Base Lounge Chair w/Dual Lock Position (26J)

Galley

- 3 Burner Range w/High Output/Piezo Ignitor & Oven
- Decor Wall Border
- Dometic® 6 cu.ft. Refrigerator/Freezer
- Real Wood Drawers
- Flip-Up Countertop Extension (Select Models)
- Kitchen Convenience Package: Spice Rack, Paper Towel Holder, Sink Cover/Cutting Board & Silverware Drawer
- Microwave Oven w/Electronic Touch Pad
- Convection Microwave Oven (Select Models)
- Raised Panel Refrigerator Inserts
- Rangehood w/Light & Fan
- Residential Size Double Bowl Sink w/Single Lever Faucet

Bedroom

- Bedspread w/Reverse Pillow Shams
- Night Pleated Shades
- Roof Vent (Select Models)
- Halogen Reading Lights
- Queen Bed w/Innerspring Mattress

Bathroom

- Bath Door w/Residential Passage Lock and Towel Bars
- China Bowl Toilet w/Hand Sprayer
- Medicine Cabinet w/Wood Construction
- Shower Head w/Flexible Hose Extension
- Skylight/Roof Vent w/12V Fan
- Wall Mounted Mirror (Select Models)
- Molded ABS Shower/Tub w/Surround
- Residential Style Metal Faucet w/Large Sink
- Glass Shower Door Enclosure (Select Models)
- Folding Shower Door Enclosure (Select Models)

EXTERIOR

Throughout

- High Gloss Tuff-Coat® Smooth Fiberglass Exterior
- Outstanding Exterior Graphics and Styling
- Onan® 4.0kW Microquiet Generator
- Large 1" (Inside Diameter) Water Tank Drain
- Rear Ladder
- Aluminum Basement Truss System
- Sewer Hose Compartment
- Utility Compartment w/Exterior Shower & Holding Tank Dump Valves
- EZ Glide® Slide-Out Room and Compartment (Select Models)
- Debris Awning w/All Slide-Out Rooms
- Trailer Hitch w/7 Pin Electrical Hook-Up†
- Auxiliary Emergency Start Assist Switch on Dash
- 12V Auxiliary Battery
- Rear Fuel Fill (Select Models)
- Stainless Steel Wheel Liners

Body Structure

- Vacu-bond® Hull Lamination Process
- Vacu-bond® Floor
- Royal Tuff-Ply Radius Roof w/Ducted A/C
- Sidewalls Framed with 1 1/2" Aluminum Tubing
- Corrosion Resistant Aluminum Tube Hull Framing
- Molded Rear Wheel Trim Flares
- Molded Rear Wall/Ceiling Transition Trim
- Steel Powder Coated Rear Bumper
- Heated Holding Tanks in Basement Compartments
- One-Piece Molded Fiberglass Front End Cap
- 26" Wide Radius Corner Entry Door w/Window
- Full Basement Exterior

Storage

- Molded Cross Link Polyethylene Battery Compartment Container & Lid
- Insulated Locking Luggage Doors w/Thumb Latch

OPTIONS

INTERIOR

- 15,000 BTU A/C with Heat Pump
- Linoleum Throughout
- Custom Dash Appliqués
- Ultraleather™ Driver/Front Passenger Seats
- Cabover Entertainment System: 26" LCD TV w/Home Theater
- 19" LCD Widescreen TV w/Remote & DVD Player
- Satellite Radio Ready
- Drinking Water Filtration System
- Power Roof Fan-Tastic® Vent Fan
- Glass Shower Door Enclosure (Select Models)

EXTERIOR

- Exterior Entertainment Center w/AM/FM/CD Player and Auxiliary Speaker, Coax Cable & 12V/110 Receptacles (Except 26J)
- Patio Awning
- Electric Patio Awning
- Full Size Spare Tire w/Carrier (26J)
- Full Size Spare Tire (Select Models)
- Dual Pane Windows
- Toilet Tank San-T-Flush™ System
- Dual 6V Deep Cycle Auxiliary Batteries
- Breakaway Side Mirrors w/Power Adjust & Heat Control
- Rear Vision Camera

2008 TIOGA SL

STANDARD FEATURES

INTERIOR

Throughout

- Complete TuffPEX Plumbing System
- 12V Water Pump, Demand Operation
- 15,000 BTU Ducted Air Conditioner
- 30,000 BTU Furnace, Wall Mounted Thermostat
- 6 Gallon Water Heater, Electronic Ignition, Propane
- Arch Hardwood Overhead Cabinet Doors w/Raised Panel
- Auxiliary Battery, Disconnect Switch on Monitor Panel
- Carpet w/Pad & Vinyl Flooring in Galley, Lavy & Entry
- Deluxe Roller Bearing, Full Extension Drawer Guides & Transit-Ship Locks
- Water Pump Controller w/On/Off Switches at Galley, Lavy & Service Compartment
- Quality Constructed Furniture by Flexsteel®
- Water Heater Bypass Valve Fresh Water System Winterization
- Central Monitor Panel
- GF Circuit Protection
- AC/DC Load Center w/12V Converter/Battery Charger

Driver Convenience

- 3 Point Seat Belts at Driver & Front Passenger Seats
- In-Dash AM/FM/Radio w/CD/DVD Player & 4 Speakers
- Power Windows & Door Locks
- 54" X 76" Cabover Bed with Patented Slider Bunk Operation, Privacy Curtain, Roof Vent & Sliding Side Windows
- Cabover Bunk Ladder
- Driver/Front Passenger Airbag Supplemental Restraint System
- Driver/Front Passenger Ultraleather™ Flexsteel® Adjustable/Reclining Bucket Seats w/Armrest
- Custom Dash Appliqués
- Cockpit Area w/Tilt Wheel, Cruise Control, Dome Light, Beverage Cup Holders, Map Pocket

Living Room

- 19" LCD TV in Cabover with Remote
- Ceiling Lights w/Wall Switches (Entry & Bath)
- Day/Night Pleated Shades
- Dinette w/2 Cup Holders, Convertible for Sleeping
- Large Viewing Window at Dinette
- Sofa Bed w/Armrests

Galley

- 3 Burner Range w/High Output/Piezo Ignitor & Oven
- Decor Wall Border
- Dometic® 8 cu.ft. Refrigerator/Freezer
- Real Wood Drawers
- Flip-Up Countertop Extension (Select Models)
- Kitchen Convenience Package: Knife Holder, Spice Rack, Paper Towel Holder, Sink Cover/Cutting Board, and Silverware Drawer
- Convection Microwave Oven
- Raised Panel Refrigerator Inserts

- Rangehood w/Light & Fan
- Residential Size Double Bowl Sink w/Single Lever Faucet
- Whole Coach Water Filtration System
- Soap Dispenser

Bedroom

- Bedspread w/Pillow Shams
- Night Pleated Shades
- Roof Vent (Select Models)
- Decorative Reading Lights
- Queen Bed w/Innerspring Mattress

Bathroom

- Bath Door w/Residential Passage Lock and Towel Bars
- China Bowl Toilet w/Hand Sprayer
- Medicine Cabinet w/Wood Construction
- Shower Head w/Flexible Hose Extension
- Skylight/Roof Vent w/12V Fan
- Wall Mounted Mirror
- Molded ABS Shower/Tub w/Surround
- Residential Style Metal Faucet w/Large Sink
- Glass Shower Door Enclosure

EXTERIOR

Throughout

- High Gloss Tuff-Coat® Smooth Fiberglass Exterior
- Outstanding Exterior Graphics and Styling
- Onan® 4.0kW Microquiet Generator
- Large 1" (Inside Diameter) Water Tank Drain
- Rear Ladder
- Utility Compartment w/Exterior Shower & Holding Tank Dump Valves
- Aluminum Basement Truss System
- EZ Glide® Slide-Out Room and Compartment (Select Models)
- Debris Awning w/All Slide-Out Rooms
- Patio Awning
- Full Size Spare Tire (Select Models)
- Trailer Hitch w/7 Pin Electrical Hook-Up†
- Auxiliary Emergency Start Assist Switch on Dash
- Rear Fuel Fill (Select Models)
- Alcoa® Aluminum Wheels
- Dual 6V Deep Cycle Auxiliary Batteries

Body Structure

- Vacu-bond® Floor
- Vacu-bond® Hull Lamination Process
- Royal Tuff-Ply Radius Roof w/Ducted A/C
- Sidewalls Framed with 1 1/2" Aluminum Tubing
- Corrosion Resistant Aluminum Tube Hull Framing
- Molded Rear Wheel Trim Flares
- Molded Rear Wall/Ceiling Transition Trim
- Steel Powder Coated Rear Bumper
- One-Piece Molded Fiberglass Front End Cap
- 26" Wide Radius Corner Entry Door w/Window
- Powder Coated Steel Running Boards w/Custom Molded Front Wheel Trims
- Heated Holding Tanks in Basement Compartments
- Full Basement Exterior

Storage

- Molded Cross Link Polyethylene Battery Compartment Container & Lid
- Painted Aluminum Skin Luggage Doors w/Strut Assist, Paddle Latches, Stainless Steel Hinges

OPTIONS

INTERIOR

- 15,000 BTU A/C with Heat Pump
- Cabover Entertainment System: 26" LCD TV w/Home Theater
- Satellite Radio Ready
- Ultraleather™ Sofa Bed

EXTERIOR

- Full-Body Paint
- Exterior Entertainment Center w/AM/FM/CD Player and Auxiliary Speaker, Coax Cable & 12V/110 Receptacles
- Toilet Tank San-T-Flush™ System
- Electric Awning (Full-Body Paint Only)
- Rear Vision Camera

SAFETY/CONVENIENCE

INTERIOR

- 10 ABC Fire Extinguisher
- Carbon Monoxide Detector/Alarm
- Exterior & Interior Entry Assist Handle
- Propane Detector/Alarm
- Smoke Detector/Alarm
- Multiple Seatbelt Locations

EXTERIOR

- 30 Amp, 30' Power Cord, Compartment Storage
- AC Duplex GF Receptacle on Patio Side
- Amber Porch Light w/Interior Switch
- Automotive Safety Glass
- Breakaway Side Mirrors (Tioga Ranger and Tioga)
- Breakaway Side Mirrors w/Power Adjust & Heat Control (Tioga SL)
- Entry Door w/Screen Door & Deadbolt Lock
- High Mounted Large Taillights
- Hydraulic 4 Wheel Disk Brakes w/4 Wheel Anti-Lock Brakes
- Power Electric Step (Tioga and Tioga SL)
- Radius Tinted Windows

WEIGHTS AND MEASUREMENTS
TIOGA RANGER
FORD® E450/CHEVY® WORKHORSE™ CHASSIS

MODELS	22B CHEVY® EXPRESS	23R FORD® E450	25G	26Q	29V	31W
Engine Displacement (Liters)	6.0	6.8	6.8 / 6.0	6.8 / 6.0	6.8 / 6.0	6.8 / 6.0
Wheelbase (Inches)	139"	158"	176" / 177"	176" / 177"	198" / 199"	214" / 215"
GVWR (lbs) ¹	12,300	14,050	14,050 / 14,050	14,050 / 14,050	14,050 / 14,050	14,050 / 14,050
Front GAWR (lbs) ²	4,300	4,600	4,600 / 4,600	4,600 / 4,600	4,600 / 4,600	4,600 / 4,600
Rear GAWR (lbs) ²	8,600	9,450	9,450 / 9,450	9,450 / 9,450	9,450 / 9,450	9,450 / 9,450
GCWR (lbs) ³	15,800	19,050	19,050 / 17,550	19,050 / 17,550	19,050 / 17,550	19,050 / 17,550
Hitch Rating Weight (lbs) ⁴	3,500	5,000	5,000 / 5,000	5,000 / 5,000	5,000 / 5,000	5,000 / 5,000
Tongue Weight (lbs) ⁵	350	500	500 / 350	500 / 350	500 / 350	350 / 350
Fuel Capacity (gal)	35	55	55 / 55	55 / 55	55 / 55	55 / 55

DIMENSIONS & CAPACITIES

MODELS	22B	23R	25G	26Q	29V	31W
Overall Length ¹	23' 2 1/2"	24' 1"	25' 11" / 26' 10"	27' 1" / 28' 0"	30' 1" / 31' 0"	31' 4" / 32' 3"
Overall Height (with A/C)	11' 4"	11' 4"	11' 4"	11' 4"	11' 4"	11' 4"
Overall Width (maximum) ^{2,3}	102"	102"	102"	102"	102"	102"
Interior Height (maximum)	82"	82"	82"	82"	82"	82"
Interior Width (maximum)	96"	96"	96"	96"	96"	96"
Fresh Water Holding Tank (gal)	30	30	30	30	30	30
Grey Water Holding Tank (gal)	36	36	37	32	37	37
Black Water Holding Tank (gal)	35	37	37	38	37	37
Water Heater Tank (gal)	6	6	6	6	6	6
Appliance Propane Tank (gal) (WC) ⁴	14	14	14	14	14	14

WEIGHTS AND MEASUREMENTS
TIOGA
FORD® E450/CHEVY® WORKHORSE™ CHASSIS

MODELS	26J	28T	30H	31K	31M	31W
Engine Displacement (Liters)	6.8 / 6.0	6.8 / 6.0	6.8 / 6.0	6.8 / 6.0	6.8 / 6.0	6.8 / 6.0
Wheelbase (Inches)	190" / 191"	206" / 207"	206" / 207"	214" / 215"	218" / 219"	214" / 215"
GVWR (lbs) ¹	14,050 / 14,050	14,050 / 14,050	14,050 / 14,050	14,050 / 14,050	14,050 / 14,050	14,050 / 14,050
Front GAWR (lbs) ²	4,600 / 4,600	4,600 / 4,600	4,600 / 4,600	4,600 / 4,600	4,600 / 4,600	4,600 / 4,600
Rear GAWR (lbs) ²	9,450 / 9,450	9,450 / 9,450	9,450 / 9,450	9,450 / 9,450	9,450 / 9,450	9,450 / 9,450
GCWR (lbs) ³	19,050 / 17,550	19,050 / 17,550	19,050 / 17,550	19,050 / 17,550	19,050 / 17,550	19,050 / 17,550
Hitch Rating Weight (lbs) ⁴	5,000 / 5,000	5,000 / 5,000	5,000 / 5,000	5,000 / 5,000	5,000 / 5,000	5,000 / 5,000
Tongue Weight (lbs) ⁵	350 / 350	350 / 350	350 / 350	350 / 350	350 / 350	350 / 350
Fuel Capacity (gal)	55 / 55	55 / 55	55 / 55	55 / 55	55 / 55	55 / 55

DIMENSIONS & CAPACITIES

MODELS	26J	28T	30H	31K	31M	31W
Overall Length ¹	27' 1" / 28' 0"	30' 6" / 31' 5"	30' 6" / 31' 5"	31' 4" / 32' 3"	32' 2" / 33' 1"	31' 4" / 32' 3"
Overall Height (with A/C)	11' 7"	11' 7"	11' 7"	11' 7"	11' 7"	11' 7"
Overall Width (maximum) ^{2,3}	102"	102"	102"	102"	102"	102"
Interior Height (maximum)	82"	82"	82"	82"	82"	82"
Interior Width (maximum)	96"	96"	96"	96"	96"	96"
Fresh Water Holding Tank (gal)	30	35	30	30	35	35
Grey Water Holding Tank (gal)	37	37	35	44	37	35
Black Water Holding Tank (gal)	37	37	35	30	37	35
Water Heater Tank (gal)	6	6	6	6	6	6
Appliance Propane Tank (gal) (WC) ⁴	14	14	14	14	14	14

WEIGHTS AND MEASUREMENTS

TIOGA SL

FORD® E450 CHASSIS

MODELS	30H	30U	31L	31W
Engine Displacement (Liters)	6.8	6.8	6.8	6.8
Wheelbase (Inches)	206"	206"	218"	214"
GVWR (lbs) [†]	14,050	14,050	14,050	14,050
Front GAWR (lbs) [‡]	4,600	4,600	4,600	4,600
Rear GAWR (lbs) [‡]	9,450	9,450	9,450	9,450
GCWR (lbs) [‡]	19,050	19,050	19,050	19,050
Hitch Rating Weight (lbs) [†]	5,000	5,000	5,000	5,000
Tongue Weight (lbs) [†]	350	350	350	350
Fuel Capacity (gal)	55	55	55	55

CHASSIS

Model: Ford® 450
 Engine: 6.8L Triton V10
 Torque: 420 lb-ft @ 3250 RPM
 Alternator: 115 Amp
 Transmission: 5-Speed Automatic w/Overdrive
 Horsepower: 305HP

Model: Chevy® Express/Chevy® Workhorse™
 Engine: 6.0L Vortec™ V8
 Torque: 360 lb-ft @ 3200 RPM
 Alternator: 145 Amp
 Transmission: 4-Speed Automatic w/Overdrive
 Horsepower: 300HP

DIMENSIONS & CAPACITIES

MODELS	30H	30U	31L	31W
Overall Length ⁴	30' 6"	30' 6"	32' 2"	31' 4"
Overall Height (with A/C)	11' 7"	11' 7"	11' 7"	11' 7"
Overall Width (maximum) ^{5,6}	102"	102"	102"	102"
Interior Height (maximum)	82"	82"	82"	82"
Interior Width (maximum)	96"	96"	96"	96"
Fresh Water Holding Tank (gal)	30	30	35	35
Grey Water Holding Tank (gal)	35	35	37	35
Black Water Holding Tank (gal)	35	35	37	35
Water Heater Tank (gal)	6	6	6	6
Appliance Propane Tank (gal) (WC) ⁷	14	14	14	14

Warranty



*Exclusive RV ownerscare warranty.
 See your Fleetwood dealer for details.*

TIOGA 
 CLASS C

Liquid Weight Reference: Water (gal) = (8.3 lbs/3.8 kgs) Fuel (gal) = (6.1 lbs/2.8 kgs) Propane (gal) = (4.2 lbs/1.9 kgs)
 Metric Conversion: Multiply pounds x 0.453 to obtain kilograms. Multiply gallons x 3.785 to obtain liters. Multiply liters x 61 to obtain cubic inches.

- GVWR (Gross Vehicle Weight Rating) is the maximum permissible weight of this fully loaded motor home. The GVWR is equal to or greater than the sum of the (UVW) unloaded vehicle weight plus the (CCC) cargo carrying capacity^{*}.
- GAWR (Gross Axle Weight Rating) is the maximum permissible loaded weight a specific axle is designed to carry.
- GCWR (Gross Combined Weight Rating) is the value specified by the motor home manufacturer as the maximum allowable loaded weight of this motor home with its towed vehicle. Towing and braking capacities may be different. Refer to Fleetwood and chassis manufacturer's manuals for complete information.
- Length measured from front bumper to rear bumper (excludes accessories).
- Excludes safety equipment and awnings.
- Motor homes feature a body-width over 96" which will restrict your access to certain roads. Before purchasing, you should research any state and/or province road laws which may affect your usage.
- Tank manufacturer's listed water capacity (WC). Actual propane capacity is 80% of water listing as required by the safety code.

[†] The chassis manufacturer recommends the installation of a supplemental brake control system to activate the brakes on the vehicle or trailer you are towing. Hitch receiver ratings expressed are maximum for the hitch receiver installed and may require the purchase of additional equipment that is dependent on the weight of the towed load. Consult with hitch receiver manufacturer for further information.

N/A = not available at time of printing.

^{*} UVW and CCC are found on the cargo carrying capacity label in each RV.

IMPORTANT— PLEASE READ: Product information, photography and illustrations included in this publication were as accurate as possible at the time of printing. For further product information and changes, please visit our website at www.fleetwoodrv.com or contact your local Fleetwood dealer. Prices, materials, design and specifications are subject to change without notice. All weights, fuel, liquid capacities and dimensions are approximate. Fleetwood has designed its recreational vehicles to provide a variety of uses for its customers. Each vehicle features optimal seating, sleeping, storage and fluid capacities. The user is responsible for selecting the proper combination of loads (i.e. occupants, equipment, fluids, cargo, etc.) to ensure that the vehicle's capacities are not exceeded.

TIOGA[®]

CLASS C

RV OWNERCARE*

Limited one-year/15,000-mile coach warranty and three-year/50,000-mile structural warranty, whichever occurs first, and it is fully transferable for the first 12 months. RV OWNERCARE is one of the RV industry's most comprehensive programs and includes systems, appliances, components and construction, with no deductible and no service charge. RV OWNERCARE coverage is provided from a company that will be around in the future to service your needs. See your nearest Fleetwood dealer for a full explanation of benefits and restrictions.

CONTACT US

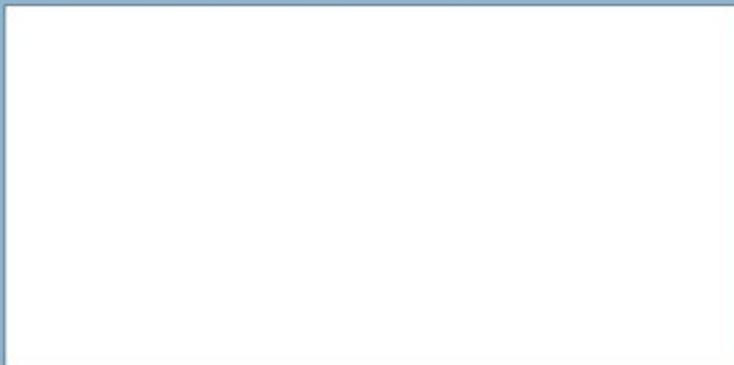
To locate a dealer near you, visit our website at www.fleetwoodrv.com or call 1-800-444-4905. We can also be contacted at Fleetwood Customer Relations, P.O. Box 1007, Decatur, IN 46733.

FLEETWOOD TRAVELCADE CLUB

As a Fleetwood owner, you're eligible to become a member of the Fleetwood Travelcade Club. It's a perfect way to meet other Fleetwood owners who love to travel across America and share in the RV lifestyle. Call (877) 577-2560, or visit our website at www.fleetwoodrv.com/owners_clubs to learn more, and join the fun.



YOUR LOCAL FLEETWOOD DEALER IS



*For complete info see your Fleetwood dealer.

©2007. Fleetwood Enterprises, Inc.
Printed in the USA. Inventory Control Number T108B2, 11/07.
Model Year 2008, Second Edition.

IMPORTANT—PLEASE READ

Product information, photography and illustrations included in this publication were as accurate as possible at the time of printing. For further product information and changes, please visit our website at www.fleetwoodrv.com or contact your local Fleetwood dealer. Prices, materials, design and specifications are subject to change without notice. All weights, fuel, liquid capacities and dimensions are approximate. Fleetwood has designed its recreational vehicles to provide a variety of uses for customers. Each vehicle features optimal seating, sleeping, storage and fluid capacities. The user is responsible for selecting the proper combination of loads (i.e. occupants, equipment, fluids, cargo, etc.) to ensure that the vehicle's capacities are not exceeded.

WHY FLEETWOOD?



Quality

There's no cutting corners. Skilled craftsmen build every Fleetwood RV for maximum durability and longevity.



Trust

More people trust Fleetwood. After all, we've spent over 50 years perfecting RVs, earning the loyalty of generations of RVers.



Passion

We're truly passionate about the RV lifestyle. Fleetwood was founded by RV enthusiasts, and that tradition continues today.



Service

Help is nearby. When you need an upgrade or repair, you'll find facilities all across North America and more than 1,100 dealers ready to assist you.



Safety

You've got precious cargo. So we've engineered dozens of innovative safety features into our motor homes to give you more peace of mind.



Warranty

Exclusive RV ownercare warranty. See your Fleetwood dealer for details.

 **FLEETWOOD**
Driven to Explore