

# Tour

# WINNEBAGO<sup>®</sup>



## Why Tour?

- Two impressive 42' floorplans
- Unmatched performance of Maxum<sup>®</sup> Chassis
- Flexsteel<sup>®</sup> cab seats with heat/massage
- LED lighting
- MCD solar/blackout roller shades
- Corian<sup>®</sup> countertops
- Polished porcelain tile floors
- Stainless steel appliances
- Aqua-Hot<sup>®</sup> heating system
- Exterior entertainment center with an HDTV



On the cover: 42GD Scarlet Night Full-Body Paint

42GD Capetown with Coffee-Glazed Forest Cherry Cabinetry

## No Compromises

Behold the Winnebago Tour®: A luxurious diesel-pusher built to exceed the most demanding expectations. Thanks to its solid foundation built upon the revolutionary Maxum® tag-axle chassis with lowered-rail construction, the Tour boasts an unequalled ride, superior performance, and storage capacity. A proven 450-hp. Cummins® turbo-charged diesel engine delivers all the power you need, which you will sense from the Flexsteel® luxury six-way adjustable cab seats that come standard with heat and massage, power lumbar support, and a queen passenger seat with a powered footrest. Choose from two magnificent 42' floorplans with the option

of an All Electric Coach that includes an induction range top and eliminates the need for LP. Premium interior amenities like Corian® countertops, porcelain tile flooring, LED ceiling lights, a security safe, and an electric fireplace make your amazing journeys that much more spectacular. Outdoor entertaining is further enhanced by the available pull-out Tailgate Package featuring a single-burner induction range top, steel counter, lockable refrigerator/freezer, storage area, and cold water access. For your optimal viewing pleasure, you can extend and pivot the exterior 32" HDTV. When it comes to elegant living, the Winnebago Tour delivers.



**Recognized Quality** The RV Dealers Association bestows its annual Quality Circle Award based on dealer ratings to the manufacturers that provide exceptional products, service and support. Only one manufacturer has received this honor for seventeen consecutive years: Winnebago Industries®.

### Best in Class

See how Winnebago takes motorhome design and function to the next level, and why we've earned the right to be called the Most Recognized Name in Motorhomes.®



Click on this icon throughout the brochure to link to more information on the web.



The smoothly retracting **MCD Solar/Blackout Roller Shades** let you control your light and privacy – no matter the time of day.



Important gauges, switches and controls are all centrally located in the **OnePlace® Systems Center**.



Keep your clothes fresh and clean wherever you are when you add the stackable **Washer and Dryer**.



Watch HD video from multiple sources, on multiple TVs – simultaneously – with the **HDMI 4X4 Matrix Video Selection System**.



A wall-mounted **Security Safe** with removable shelves and an electronic key pad keeps your valuable items secure.



The **Rest Easy® Extendable Sectional Sofa** glides from a couch to a recliner to a comfortable bed at the press of a button.



Rest Easy Extendable Sectional Sofa

We invite you to relax in the ultimate lounge experience: starting with the Ultraleather™ furniture that includes a Rest Easy® Extendable Sectional Sofa, recliner, and two ottomans. Enjoy the ambient warmth of the fireplace while watching your favorite movie on the Blu-Ray™ Home Theater Sound System. And, in case you need to switch rooms, the HDMI 4X4 Matrix Audio/Video Selection System displays your movie on multiple HDTVs simultaneously so you won't miss a beat. Lavish surroundings and relaxation go hand in hand in the Tour.



42GD Capetown with Coffee-Glazed Forest Cherry Cabinetry



Rest Easy Extendable Sectional Sofa as Bed

Sophisticated amenities abound in this high-end galley featuring stainless steel appliances, a beautiful French door refrigerator, microwave and an available dishwasher. If you prefer, an induction range top is available with the All Electric Coach option. Corian® solid-surface countertops, along with a matching backsplash and sink covers, provide an abundance of workspace to prepare everything from snacks to gourmet meals. The beautiful coffee-glazed cabinets with a pull-out island offer ample storage space. A spacious overhead cabinet slideout tray is available in the 42GD, while the 42QD galley offers a large pantry with three pull-out shelves located behind the swing-out shelving unit.



42GD Galley



Pull-Out Island Extended





42GD Cabinet with Pull-Out Shelves



Full-Extension Drawer Slides



French Door Residential Refrigerator



Glide-Out Freezer Drawer



Available Dishwasher



Dining Table Extended for Four

Serving and enjoying meals is made all the more pleasurable with the flexible dining arrangement. With its functional buffet and extendable dining table with chairs, you can serve two or extend the table to accommodate four people.



Extendable Dining Table and Chairs



Powered King Bed

When it's time to say goodnight, you'll be more than happy to say hello to your bed. The walk-around, powered king bed features the Ideal Rest® Natural Reserve digital comfort control mattress allowing you to adjust the firmness level of each side of the bed. And when you want to watch TV, simply tip the head of the bed upward for a comfortable viewing position. The mattress features a duo-firmness memory-cell insert, along with natural cotton and bamboo fibers. While the 42GD offers an impressively large wardrobe, the 42QD offers twin wardrobes with a private master bath.



Powered King Bed Up





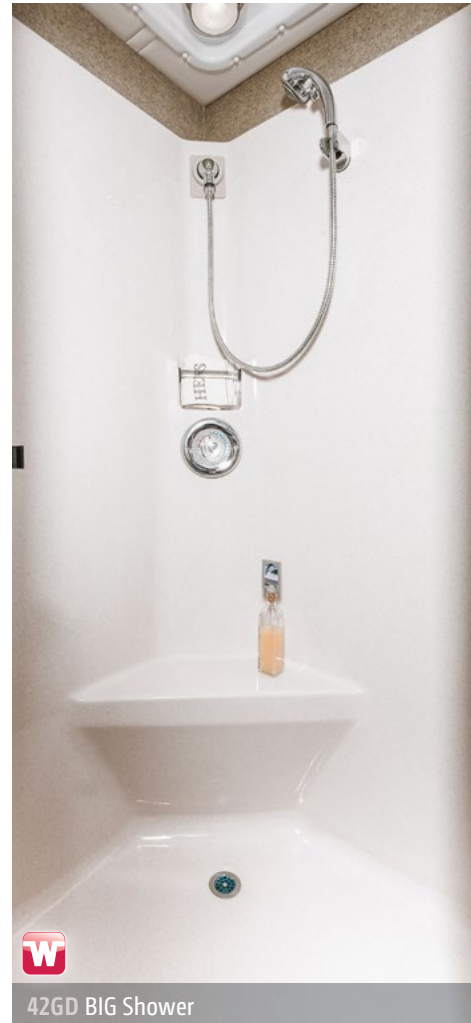
42GD Chest of Drawers



42GD Bathroom



42GD Wardrobe



42GD BIG Shower



Available Washer and Dryer



Dash

You'll appreciate the smooth ride of the Maxum Chassis® and the comfortable controls that make navigation so user-friendly. Your experience commanding the Tour is enhanced by the fully-adjustable steering wheel, foot pedals, and six-way Flexsteel® luxury cab seats that feature heat and massage, power lumbar support, and a queen passenger seat with a powered foot rest. The Infotainment Center with Rand McNally RV GPS puts the best navigational controls within reach and SiriusXM™ satellite radio (subscription not included) delivers over 100 channels of digital entertainment no matter where you go. Plus, rearview and side cameras assist your ability to safely navigate.



FlexSteel Queen Cab Seat



Infotainment Center

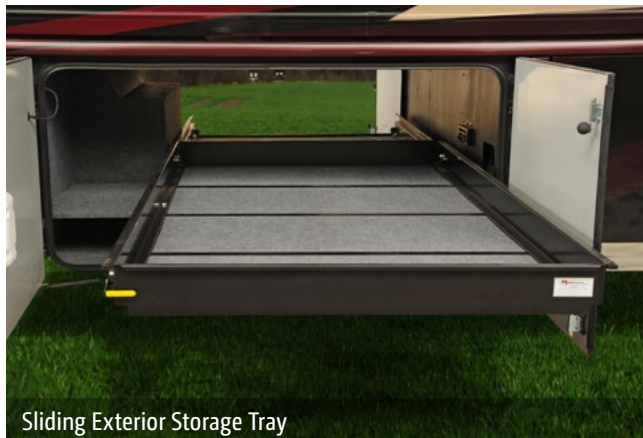


Powered Mirror

The same signature elegance you find inside the Tour is outside as well, with dramatic full-body paint, stainless steel accents, and powered acrylic awnings. An exterior entertainment center includes a 32" HDTV that extends and rotates for optimal viewing. Add the available Tailgate Package with its single-burner induction range top, stainless steel counter, refrigerator/freezer storage and cold water access for the best setup in outdoor entertaining. An exterior service center features color-coded labels for quick hookups and offers easy access to the full coach fresh water system filter.



Exterior Entertainment Center



Sliding Exterior Storage Tray



Available Tailgate Package



Exterior Service Station

**Fiberglass Roof** The crowned, one-piece fiberglass roof is backed by a 10-year limited parts-and-labor roof skin warranty.

**Thermo-Panel® Sidewalls** By layering fiberglass and high-density block foam insulation with welded aluminum support structures, we create some of the industry's strongest, most durable and lightweight sidewalls.

**E-Coating** An electrodeposition coating helps protect critical steel components.

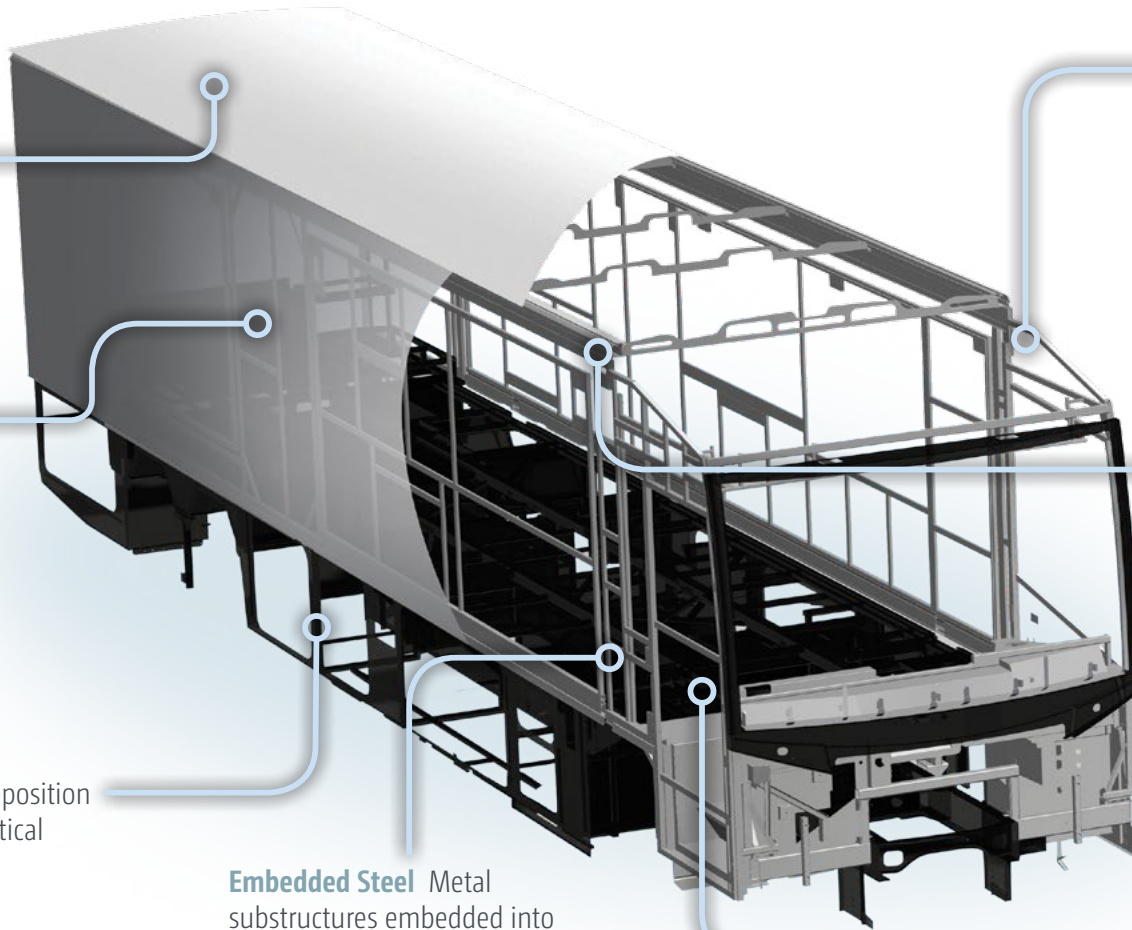
**Embedded Steel** Metal substructures embedded into the sidewall provide solid attachment points to keep cabinets and appliances mounted securely in place.

**Solid Framework** Aluminum extruded in our own facility to our exacting standards creates an extremely strong and solid structural framework.

**Laser-Cut Tubing** Precision laser cutters create precision joints in structural steel that are stronger and require less welding.



**Interlocking Joints** Specially engineered interlocking joints connect the floor, sidewalls, and roof where competitors often rely on simple screws to bear the weight.



**SUPER  
STRUCTURE**  
BUILT TO LAST

Every coach—from our smallest Class C to our largest diesel-pusher model—is built to Winnebago's® legendary SuperStructure® construction standards. It's a process developed and refined over more than 50 years of building some of the strongest, most durable coaches in the industry.

3-point engine mounting reduces engine vibration.

Engine compression brake uses the engine to slow the coach, promoting longer brake life.

Allison® 3000 MH 6-speed automatic transmission includes a touchpad control for ease of use.

Rear axle incorporates proprietary gear machining for a smoother, quieter ride.

The lowered-rail design moves intrusive rails from storage areas, creating up to 199 cubic feet of storage.

ZF™ IFS front suspension and NeWay® rear air suspension provide superior ride and handling.

## MAXUM CHASSIS

15,000-lb. trailer hitch<sup>9</sup>

Taller, pass-through storage height accommodates bulky items.

Extra space in critical areas allows for more pass-through storage.

Up to a 60° wheel cut provides a tighter turning radius and better maneuvering.

“Clean Air Diesel” 450-hp ISL Cummins® engine delivers hill-climbing power when you need it most.

Low frame rails create a lower center of gravity improving stability.

Winnebago Industries’ SuperStructure integrated with the lowered-rail design creates a chassis that is seven times stronger than typical raised-rail chassis designs.

Color-coded air lines make service easy.

Dual-fill fuel tank.

## A True Work of Art

You may not be able to see the Freightliner® Maxum Chassis as you’re driving through the Rockies, but you’ll know it’s there. Its powerful Cummins turbo-charged diesel engine and Allison® transmission go to work so you don’t have to sweat the hills and valleys ahead.

Through a strong partnership with Freightliner, the undisputed leader in diesel motorhome

chassis, we set a new standard for handling, ride and performance in diesel chassis design.

But performance doesn’t mean sacrificing storage. The innovative lowered-rail design of the Maxum Chassis opens up a cavernous basement storage compartment, offering up to 199 cubic feet of storage.

Michelin® tires and polished aluminum wheels look sharp.

4-wheel ABS anti-lock air brakes provide fast stopping power.

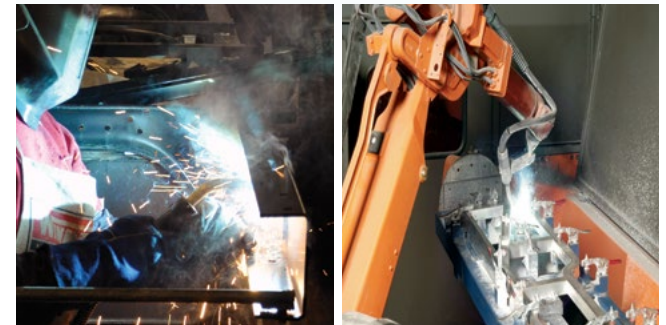
**TESTING** Before rolling out of our factories, every coach undergoes an extensive 113-point inspection. Each coach also passes a high-pressure water test that simulates rain at a rate of 50-inches per hour to check for leaks. During the design process, our computer simulations, physical testing center, and rigorous test track ensure each model is built to last.



**DETAILS** At Winnebago Industries, we treat the features you can't see with the same care as the ones you can. Look in the access panels of some of our competitors' coaches and you'll see loose insulation and wires haphazardly strewn about. Winnebago Industries maintains a clean fit and finish throughout so your coach will last for the long haul.



**BUILT IN-HOUSE** We extrude our own aluminum. We rotocast our own plastic components. In fact, we manufacture most of our own parts so they are designed to fit the space, rather than fitting the space to an awkward off-the-shelf component size.



**SUPER  
STRUCTURE**<sup>®</sup>  
BUILT TO LAST

 Visit [BetterBuiltRVs.com](http://BetterBuiltRVs.com) to gain real insight into what goes into a Winnebago Industries motorhome.

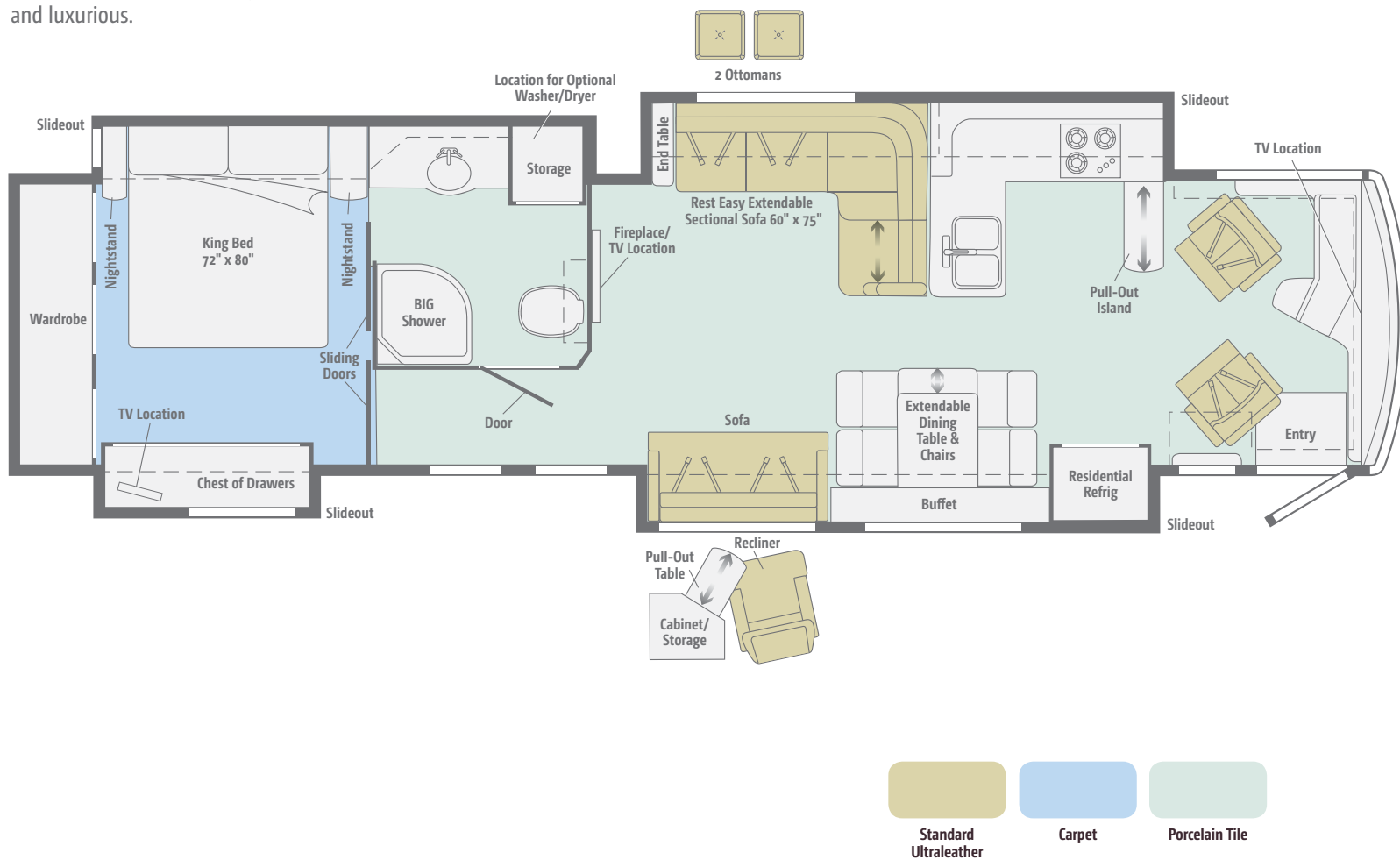
**TAKE A TOUR** We're proud of our processes, state-of-the-art facilities, and the people who make Winnebago Industries number one. We invite you to visit our complex in Forest City, Iowa, for a first-hand look at the dedication and technology behind every motorhome we build.



Dimensions shown are for sleeping space only and may vary due to styling differences. Dashed lines denote overhead storage areas. Floorplans and specifications are also available online at [GoWinnebago.com](http://GoWinnebago.com).

### 42GD

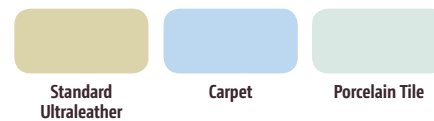
Four slideouts, a forward galley with an extendable dining table, mid-coach and front overhead HDTVs, and a large bathroom make for a distinguished coach that is roomy and luxurious.



Dimensions shown are for sleeping space only and may vary due to styling differences. Dashed lines denote overhead storage areas. Floorplans and specifications are also available online at [GoWinnebago.com](http://GoWinnebago.com).

## 42QD

Thanks to its full-wall slideout, this spacious floorplan features a front lounge with a side-hinged HDTV over a fireplace, a mid-coach guest bath and private master bath, and twin wardrobes in the bedroom.





Choose from three elegant fabric collections and three coffee-glazed wood finishes, each with Satin Nickel hardware.

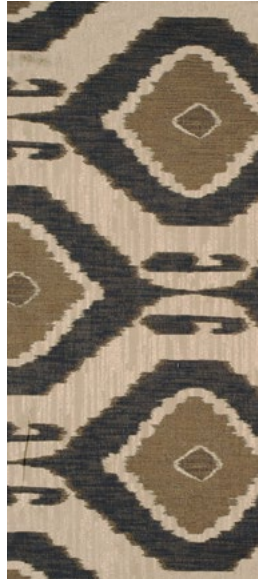
### Capetown



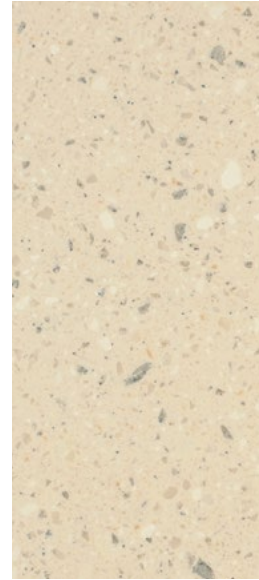
Ultraleather



Accent



Bedspread



Corian Countertop



Wall Board



Carpet



Porcelain Tile



Coffee-Glazed  
Honey Cherry



Coffee-Glazed  
Forest Cherry



Coffee-Glazed  
Vienna Maple

Choose from three elegant fabric collections and three coffee-glazed wood finishes, each with Satin Nickel hardware.

### Illusion



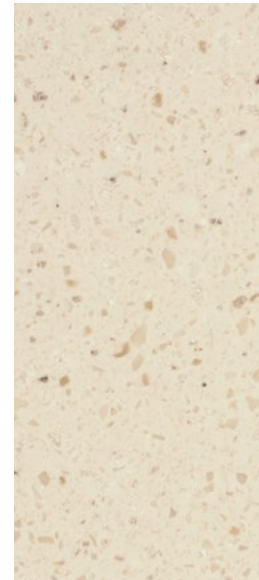
Ultraleather



Accent



Bedsread



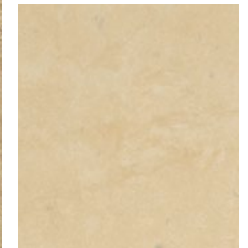
Corian Countertop



Wall Board



Carpet



Porcelain Tile



Coffee-Glazed  
Honey Cherry



Coffee-Glazed  
Forest Cherry



Coffee-Glazed  
Vienna Maple

Choose from three elegant fabric collections and three coffee-glazed wood finishes, each with Satin Nickel hardware.

### Angora



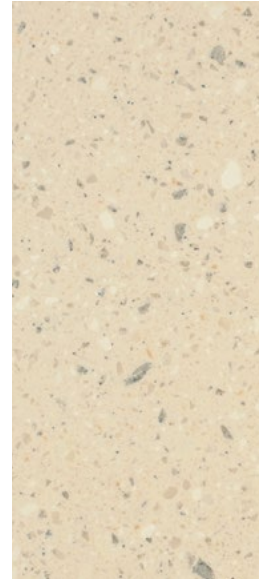
Ultraleather



Accent



Bedsread



Corian Countertop



Wall Board



Carpet



Porcelain Tile



Coffee-Glazed  
Honey Cherry



Coffee-Glazed  
Forest Cherry



Coffee-Glazed  
Vienna Maple

Stylize your Tour with one of six exceptional full-body paint options featuring a premier clearcoat automotive finish.



**Kalahari**  
FULL-BODY PAINT



**Blaze**  
FULL-BODY PAINT

Stylize your Tour with one of six exceptional full-body paint options featuring a premier clearcoat automotive finish.



**Polished Pewter**  
FULL-BODY PAINT



**Pearl**  
FULL-BODY PAINT

Stylize your Tour with one of six exceptional full-body paint options featuring a premier clearcoat automotive finish.



**Storm Gray**  
FULL-BODY PAINT



**Scarlet Night**  
FULL-BODY PAINT

## Weights & Measures

|                                                        |            |            |
|--------------------------------------------------------|------------|------------|
| Length                                                 | 42'10"     | 42'10"     |
| Exterior Height <sup>1</sup>                           | 12'10"     | 12'11"     |
| Exterior Width <sup>2</sup>                            | 8'5.5"     | 8'5.5"     |
| Exterior Storage <sup>3</sup> (cu. ft.)                | 199        | 196        |
| Awning Length                                          | 14'6"      | 20'        |
| Interior Height                                        | 7'         | 7'         |
| Interior Width                                         | 8'0.5"     | 8'0.5"     |
| Freshwater Tank Capacity <sup>4</sup> (gal.)           | 85         | 85         |
| Water Heater Capacity (gal.)                           | Continuous | Continuous |
| Holding Tank Capacity - Black/Gray <sup>4</sup> (gal.) | 51/71      | 51/95      |
| LP Capacity <sup>5</sup> (gal.)                        | 28         | 28         |
| Fuel Capacity (gal.)                                   | 150        | 150        |
| GCWR <sup>6</sup> (lbs.)                               | 59,600     | 59,600     |
| GVWR (lbs.)                                            | 44,600     | 44,600     |
| GAWR - Front (lbs.)                                    | 14,600     | 14,600     |
| GAWR - Rear (lbs.)                                     | 30,000     | 30,000     |
| Wheelbase                                              | 279" + tag | 279" + tag |

### 42GD

### 42QD

## Freightliner® Maxum® Chassis

- Cummins® ISL 8.9L 450-hp turbo-charged diesel engine
- Adjustable brake and accelerator pedals
- Allison® 3000 MH 6-speed electronic transmission w/2-stage engine compression brake
- Information display center
- ZF™ Independent Front Air Suspension, NeWay® rear air suspension
- 160-amp. alternator
- Air brakes w/ABS
- Quick-connect air accessory
- Automatic leveling jacks w/3-position controls
- Tow power package w/7-pin trailer wiring and I.P. wiring
- Trailer Hitch<sup>6</sup> 15,000-lb. drawbar/1,500-lb. maximum vertical tongue weight
- Stylized aluminum wheels

## Cab Conveniences

- Flexsteel® luxury cab seats driver and queen passenger seat w/six-way power, power passenger footrest, heat and massage, remote swivel, power lumbar support, manual recline, adjustable armrests
- 3-point seat belts
- Infotainment Center with Rand McNally RV GPS 10.4" touch screen color monitor w/split screen function, 2<sup>nd</sup> monitor, Rand McNally RV GPS safe & easy routing, amenities & tools, trips & content, turn-by-turn voice guidance, AM/FM radio w/CD/DVD player, steering wheel and hand held remote, SiriusXM™ (subscription not included), compass, outside temperature, iPod®/iPhone® audio integration, Bluetooth™, color rearview camera, sideview camera display
- Video camera system
- Tilt/telescoping SmartWheel™ steering wheel w/infinite adjustable column
- Cruise control
- Power door locks w/remote keyless entry

- Electric adjustable mirrors w/defrost, sideview camera and turn signal
- 12-volt powerpoints
- Powered stepwell cover
- Two-speed built-in defroster fans
- MCD solar/blackout roller shades powered for windshield, manual for driver/passenger windows
- Chassis/house battery radio power switch
- C.B. wire prep
- Dual map lights

### OPTIONAL EQUIPMENT

Ultra cab seats driver and passenger seats w/six-way power, heated, multi-adjustable recline, adjustable lumbar support, +Lounger (passenger seat) w/flip-up tablet and manual footrest

## Interior

- Electric fireplace
- 40" HDTV (front overhead 42GD)
- 46" HDTV (mid-coach 42QD)
- 55" HDTV (mid-coach 42GD)
- Blu-Ray™ Home Theater Sound System CD/DVD player, iPhone/iPod dock w/video, receiver, amplifier, 5 speakers, and 2 subwoofers
- Dirt Devil® central vacuum system w/VacPan®
- Key-activated slideroom master lock switch
- Security Safe
- HDMI 4X4 Matrix central video selection system
- Satellite system ready (front and bedroom)
- OnePlace® systems center
- Contour, tinted, dual-glazed, thermo-insulated coach windows
- Soft vinyl ceiling
- Powered roof vent (galley)
- MCD solar/blackout roller shades
- LED ceiling lights

Accent lights above front overhead cabinets and ceiling trim panels

- Digital TV amplified antenna system
- Washer/dryer prep

### OPTIONAL EQUIPMENT

- Stackable washer/dryer
- Winegard® Trav'ler® automatic multi-satellite antenna
- Winegard Mission® in-motion TV antenna system

## Galley

- Corian® countertops, backsplash and sink covers
- Residential stainless steel French door refrigerator
- 3-burner LP range top w/glass cover and storage below
- Stainless steel refrigerator w/French doors freezer drawer, water and ice dispenser

Filtered cold-water

### OPTIONAL EQUIPMENT

- Stainless steel drawer-style dishwasher
- Stainless steel microwave/speedcook oven w/exterior vented range fan

## Bath

- Corian countertop
- Flexible showerhead
- Moen® Posi-Temp® shower valve
- Textured glass shower door
- Skylight (42QD)
- Porcelain toilet
- Area rug (master bath 42QD)

## Bedroom

32" HDTV (42GD)

Ceiling fan

Powered king bed w/Ideal Rest® Natural Reserve digital comfort control mattress and remote controls

Bedsread, pillows and shams

### OPTIONAL EQUIPMENT

Porcelain tile flooring (bedroom)

28" HDTV (42QD)

## Exterior

Entertainment Center 32" HDTV w/extendable/pivot mounting bracket, stereo w/remote, HDMI connection, audio out jack, TV jack, power outlets

Auxiliary docking lamps

Driver and passenger-side service bay lights

Two powered acrylic patio awnings w/motion sensors and LED lighting

Powered acrylic entrance awning

Acrylic window awnings

KeyOne™ lock system

Lighted storage compartments

Four storage containers w/lids

7' folding stepladder

Porch and stepwell light

Automatic entrance steps

Lower front protective mask

Premier clearcoat automotive finish

Rear mud flaps

Full-width rear mudguard

Polished stainless steel on lower valance doors and panels

### OPTIONAL EQUIPMENT

90" x 54" slideout storage compartment tray (extends out either side of the coach)

**Tailgate Package** single-burner induction range top, painted steel counter, refrigerator/freezer on pull-out tray, bottle opener, garbage bag holder, paper towel holder, cold water access port, flexible water spout w/shut off, 15' coil water hose, 110V/AC receptacle, large storage area

## Heating & Cooling System

**TrueAir® Maximum Comfort A/C** three 13,500 BTU roof air conditioners w/two heat pumps and three condensation pumps

**Aqua-Hot® 450 hydronic dual-zone heating system w/continuous hot water**

Triple-zone thermostat

## Electrical System

**Service Center** lighted, 120V AC power, cable input, power cord, QuickPort® service connection hatch

**PowerLine® Energy Management System**

Auxiliary start circuit

50-amp. power cord

Power cord reel

Exterior TV jack and AC duplex receptacle

2,800-watt inverter/charger w/remote panel

10,000-watt Cummins Onan® Quiet Diesel™ generator

Powered generator slideout mechanism

AC/DC electrical distribution system

6 maintenance-free AGM (Absorbed Glass Mat) sealed batteries

Battery disconnect system (coach and chassis)

Automatic dual-battery charge control

Shoreline/generator automatic changeover switch w/Surge Guard® Plus

Chassis battery charger/maintainer

Automatic generator start system

### OPTIONAL EQUIPMENT

**All Electric Coach** replaces LP range top w/induction range top, LP tank and all components are removed and replaced w/additional storage

100-watt solar panel battery charger

## Plumbing System

**Service Center** lighted, monitor panel, pressurized city water hookup w/diverter fill, fresh water drain, drainage valves, exterior wash station w/pump switch, glove holder, holding-tank flushing system, paper towel holder, portable satellite dish hookup, 20' sewer hose w/QuickConnect,® QuickPort service connection hatch, soap dispenser

**TrueLevel™ holding-tank monitoring system**

Water supply hose w/reel

Full coach water filtration system

**Permanent-mount LP tank w/gauge** (NA w/All Electric Coach option)

**LPG accessory connection** (patio area) (NA w/All Electric Coach option)

On-demand water pump

**Winterization Package** water heater bypass valve and siphon tube

Heated holding-tank compartment

## Safety

LP, smoke, and carbon monoxide detectors

10 BC fire extinguisher

Ground fault interrupter

Daytime running lamps

Fog lamps

High-mount brake lamps

## Warranty<sup>7</sup>

12-month/15,000-mile basic limited warranty<sup>8</sup>

36-month/36,000-mile limited warranty on structure<sup>8</sup>

10-year limited parts-and-labor warranty on roof skin<sup>8</sup>

- The height of each model is measured to the top of the tallest standard feature and is based on the curb weight of a typically equipped unit. The actual height of your vehicle may vary by several inches depending on chassis or equipment variations. Please contact your dealer for further information.
- The floorplans feature a wide-body design – over 96". In making your purchase decision, you should be aware that some states restrict access on some or all state roads to 96" in body width. Before making your purchase decision, you should confirm the road usage laws in the states of interest to you.
- The load capacity of your motor home is designated by weight, not by volume, so you cannot necessarily use all available space when loading your motor home.
- Capacities are based on measurements prior to tank installation. Slight capacity variations can result due to installation applications.
- Capacities shown are tank manufacturer's listed water capacity (W.C.). Actual filled LP capacity is 80% of listing due to overfilling prevention device on tank.
- Actual towing capacity is dependent on your particular loading and towing circumstances which includes the GVWR, GAWR, and GCWR, as well as adequate trailer brakes. Please refer to the Operator's Manual of your vehicle for further towing information.
- See separate chassis warranty.
- See your dealer for complete warranty information

NA Not Available

Not all items available in combination. See dealer for details.

Winnebago Industries® continuing program of product improvement makes specifications, equipment, model availability, and prices subject to change without notice. Published content reflects the most current product information at time of printing. Please consult your dealer for individual vehicle features and specifications.



# GoWinnebago.com Has All The Answers

Visit [GoWinnebago.com](http://GoWinnebago.com) on your computer, smartphone or tablet for the latest product information and updates.



# **PREFERRED CARE PROGRAM**

We back our motorhomes with best-in-class support both before *and* after the sale:

- 12-month/15,000-mile basic limited warranty
- 36-month/36,000-mile limited warranty on structure
- 10-year limited parts-and-labor warranty on roof skin
- Complimentary 24-hour roadside assistance program



**TRIP SAVER**  
FAST TRACK PARTS  
**WINNEBAGO**

- TripSaver® Fast Track Parts guarantees that in-stock warranty parts ship directly to your dealer within 24 hours
- National dealer service network



**Premium**  
**ROADSIDE ASSISTANCE**



**WIT CLUB**

## Join the Club, Join the Fun

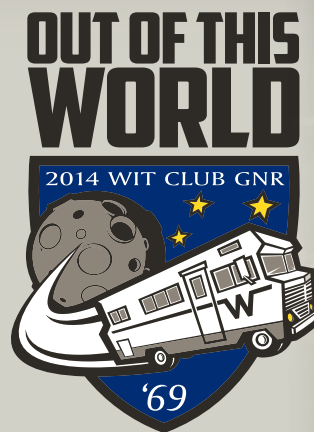
As a Winnebago motorhome owner, you are invited to join the WIT Club. It's a great way to take full advantage of your new coach and meet fun-loving WIT Club members from across the country who make motorhome adventures a way of life.



### Members enjoy:

- Caravans and rallies
- Newsletters
- Local and state group activities
- RV travel benefits

See more at [WITclub.com](http://WITclub.com)



### Grand National Rally

In 1969, two things happened: Neil Armstrong took mankind's first steps on the moon, and Winnebago WIT Club launched its first Grand National Rally in Forest City, Iowa. Every year since then, thousands of rally-goers connect with old friends to enjoy concerts, tours, activities, and more. Blast off for an adventurous week in July to celebrate 45 years of interstate land roving at the 2014 "Out of This World" Grand National Rally. It's a mission you'll never forget!