

'99 ETREKE

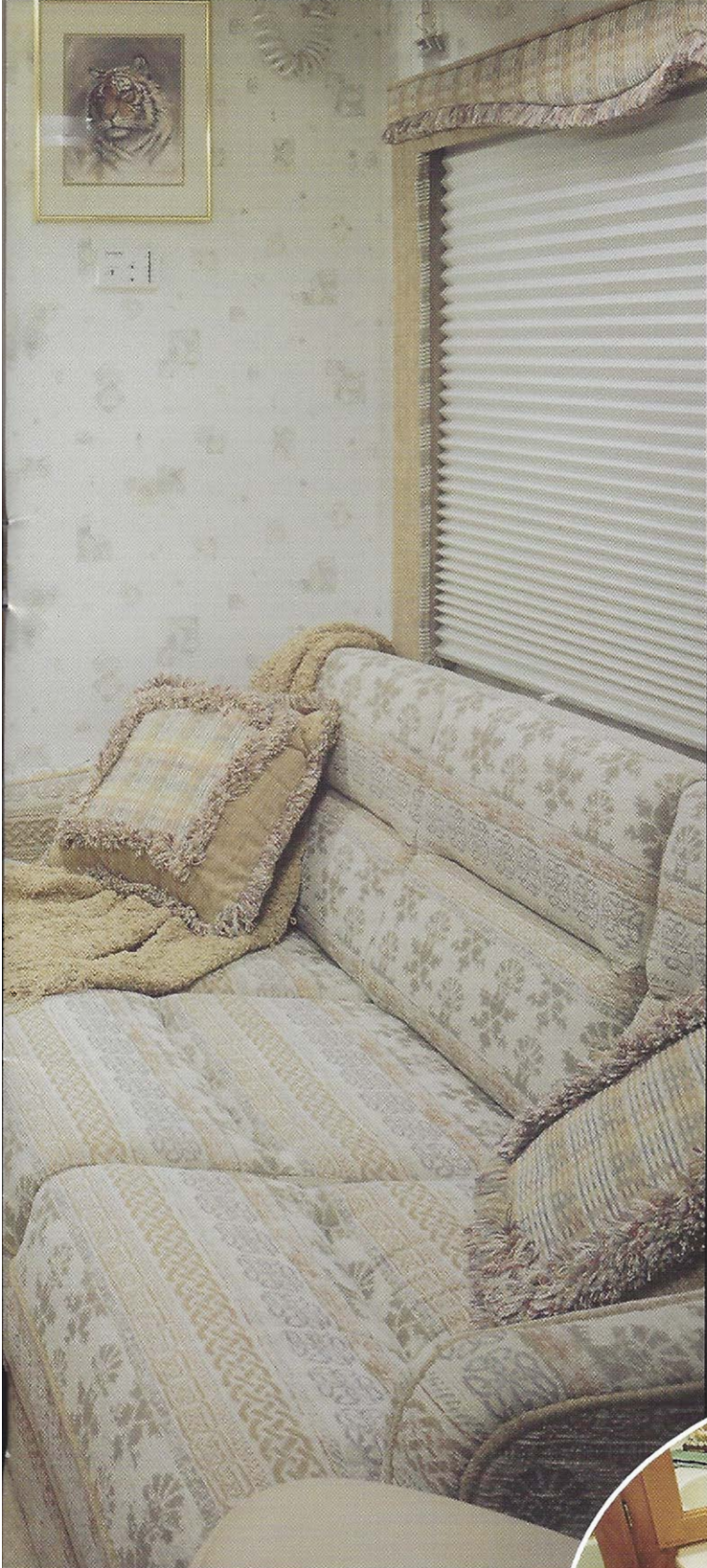


The Smart Coach





The expanding dinette is featured in the 2430 and 2830 models. The 2480 plan has a fold-down dinette (not shown) to optimize living space.



Seeing is believing . . .

So many features packed into this delightful coach make it easy to forget Trek's thrifty size! With three decor groups to choose from, you'll find the right interior to suit your taste.

You'll enjoy TREK's smartly arranged, fully applianced galley. A 3-burner cook top and micro-convection oven, along with the 8 cubic ft. Dometic™ refrigerator completes a kitchen of chef's delights.

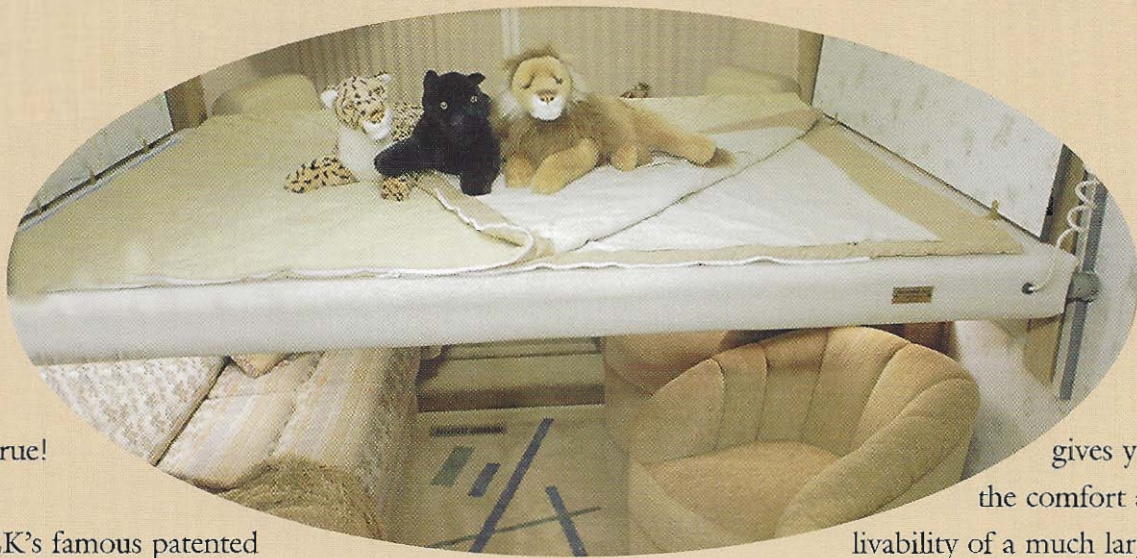
The living area of the 2430 and 2830 plans come standard with barrel style chairs that are so comfortable while fitting in a smaller space. Or choose the larger swivel motion chair (not shown) with kick foot rest. You'll discover the cushion style dinette chairs (not shown) featured in the 2480 will nicely accommodate both dining and living room seating.

For year round comfort, you can rely on the 40,000 BTU LP furnace and 13,500 BTU ducted air conditioner to control your interior environment. The quiet and powerful Fantastic™ Fan in the galley keeps the air fresh, and allows for climate control on those days not quite hot enough to require the air conditioner.

The TREK features a full bath with all the amenities you'd expect in coaches twice its size. You'll also find abundant storage behind the hardwood cabinet doors.



TREK - The small coach with a big attitude! Featuring the ElectroMajic™ bed that hides all day and sleeps all night.



It's true!

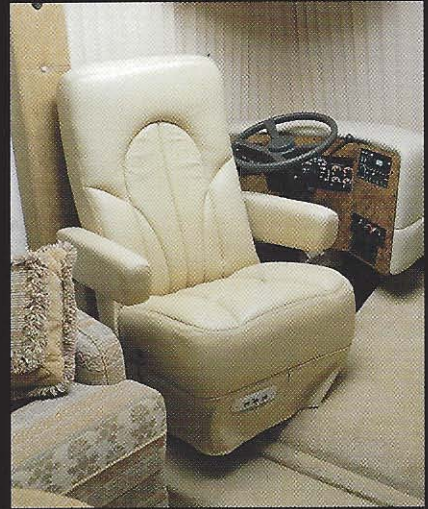
TREK's famous patented ElectroMajic™ bed is one of the reasons why it's known as *"The small coach with a big attitude."* TREK has been designed and engineered to give coach owners the benefits of a large coach without the actual physical size of a 36' or 40' motor home. Indeed, the TREK interior

gives you the comfort and livability of a much larger

coach, while it remains a smaller coach to drive and maneuver in traffic and campgrounds.

Smaller *is* smarter. See it at your local TREK dealer. Seeing *is* believing.



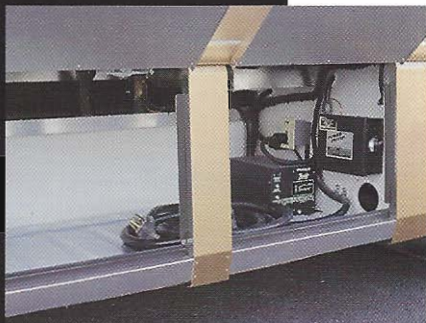
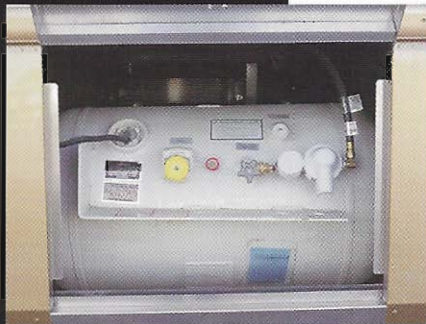
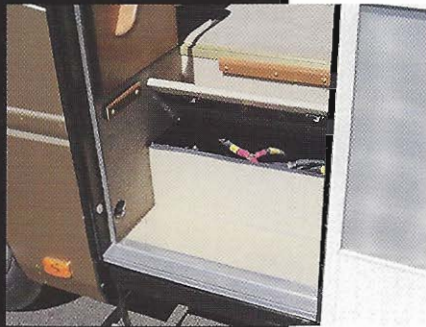


Small in size, TREK is huge in quality and value. Beautiful '99 interiors and the new luxury options are now available. The new Designer's Package will outfit your TREK with luxurious UltraLeather™ cab seats, beautiful Fountainhead™ Countertops, inlaid carpet design with coordinating colors, and pleated shades in the living area.

TREK's top quality hand finished hardwood cabinetry is known for its beauty and durability. You'll enjoy the richness of the natural wood grains and the warmth it brings to a cozy living area.

TREK





The 1999 TREK - It's the only coach in its class that boasts full luxury amenities in a compact size. It's the answer for the RVer who wants the luxury of Class A motor coaching with the flexibility of being able to camp or park where the big 40 foot coaches don't dare ro go.

The enjoyment you'll get from your Trek starts with its new, vibrant exterior. Safari has taken advantage of state-of-the-art lamination technology. The result is a high gloss, single piece aluminum skin that has the appearance of fiberglass, but without the excess weight. Safari then protects and beautifies this aluminum skin with full coverage Diamont™ paint. The result? A motorhome that has lasting, easily maintained beauty.

Trek is built on a Rock Solid™ foundation. The Chevrolet P-32 Chassis offers a choice of the 6.5 Liter Diesel or 454 CID Vortec gasoline engine. You'll travel with confidence, knowing that Chevy provides the power and payload to suit your needs.

Access to power supplies, plumbing lines and plenty of storage will be found beneath the skirts of this innovative coach. Power features include chassis and house batteries, Onan MicroLite™ Generator and 1000 Watt Inverter. You'll appreciate the easy access to plumbing lines that come together neatly in one single manifold. Storage tanks include 80 gallons for fresh water, and 40 gallon capacities in both the black and gray holding tanks. And, there is still plenty of room left over to stow your belongings for those extended trips.

It's easy to discover why TREK is a small coach with a big coach attitude.

'99 Trek Features & Options

STANDARD FEATURES

Basic Construction

- Aircraft Aluminum Welded Frame
- Laminated High Gloss Aluminum Sidewalls
- Molded Fiberglass Front & Rear Caps
- Laminated, Vacubond Roof with Single-Piece Kemlite™ Fiberglass Skin
- Full Polystyrene Block Insulation in Roof, Walls and Floors

Chassis, Mechanical & Exterior

- Chevrolet P-32 Chassis
- 6.5L Diesel or 454 CID Vortec Gasoline
- 24' GVWR 14800, GCWR 19000
- 28' GVWR 16500, GCWR 21000
- 225/70R-19.5(F) Tires
- Electric Power Step
- 5000 Lb. Tow Hitch
- Basement Storage
- Enclosed Storage Tanks
- Consolidated Plumbing Manifold
- Urethane Paint, Base & Clear Coats
- Painted Aluminum Skirts
- Stainless Steel Wheel Liners

Driving Comforts

- Cruise Control
- Automatic Transmission
- Four Wheel Anti-Lock Disc Brakes
- Six-way Power Driver's Seat
- Heated Remote-Control Rear View Mirrors w/ Turn Signals
- Delco AM/FM Dash Radio with Cassette Deck
- Rear View Camera & Monitor
- Dash Air Conditioning/Heat
- Scissors Style Sun Visors

Measurements & Capacities

- Fresh Water - 80 Gallons
- Fuel - 60 Gallons
- Black Tank - 40 Gallons
- Grey Tank - 40 Gallons
- LPG Gas - 35 Gallons
- Water Heater - 6 Gallons
- Coach Height - 11' 3"
- Coach Width - 96"
- Length 2430/2480: 26' 2"
- Length 2830: 29' 3"

Power Systems

- (2) 12V House Batteries
- 1000 Watt Inverter
- 20 Watt Solar Panel
- Monitor Panel
- 50 Amp Charger
- 50 Amp Service w/35 Amp Adapter
- 3.6kW LPG Onan Microlite™ Generator (w/ P-32 Diesel)
- 4.0kW Gasoline Onan Microlite™ Generator (w/ P-32 Vortec)

Galley and Bath Features

- Full Power Micro/Convection Oven
- Power Range Hood
- Wedgewood™ 3-Burner Cook Top
- 8 Cu. Ft. Dometic™ Refrigerator
- Fantastic Fan™ in Galley
- Power Vent in Bath
- 120V Fluorescent Galley Lighting
- Genovese™ Solid Surface Countertops w/ Integrated Sinks
- Expanding Dinette

Comforts, Entertainment and Luxuries

- Patented Electro-majic™ Bed
- 20" Color Television
- Amplified Television Antenna
- Cable TV and Phone Hookup
- 40,000 BTU LP Furnace
- 13,500 BTU Ducted Roof Air

Cabinetry, Fixtures and Decor

- Alder Hardwood Cabinetry
- Genovese™ Solid Surface Countertops w/Integrated Sinks
- 120V Residential Lighting
- Large Shower with Skylight
- Interior Grab Rail at Entry Door
- Plush Carpet
- Mini Blinds Throughout
- Wraparound Windshield Privacy Drapes

OPTIONS

Decor Choices

- Moremi (Blue)
- Amboseli (Green)
- Samburu (Gold)

Pathmaker Package

- Air Horns
- Patio Awning
- Hydraulic Levelers

Designer's Package

- Fountainhead™ Countertops
- UltraLeather™ Cab Seats
- Day/Night Pleated Shades
- Specialty Inlaid Carpet

Individual Options

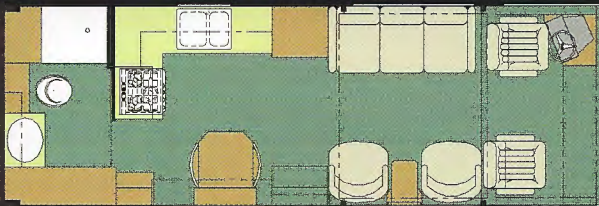
- Double Pane Windows
- Wood Plank Floor in Galley
- Wood Plank Floor in Bath
- Full Wood Plank Floor
- Dash CD Player Upgrade
- CB Radio
- VCR
- Datron™ Satellite Dish w/ Sony™ Receiver
- Window Awning
- Mural

Specifications subject to change without notice or obligation

Beautiful Genovese™ countertops with integrated sinks come standard in TREK. Elegant Fountainhead Countertops with deep, double stainless steel sink in galley and china sink in bath is optional with the new Designer's package.



1999 TREK Floor Plans



2430 Rear Bath
ElectroMajic™ bed



2480 Deluxe Rear Bath
ElectroMajic™ bed



2830 Extra Large Galley
ElectroMajic™ bed



Safari Motor Coaches, Inc.

30725 Diamond Hill Road • P. O. Box 740
Harrisburg, OR 97446 • 800-458-8735
www.safarimotorcoaches.com