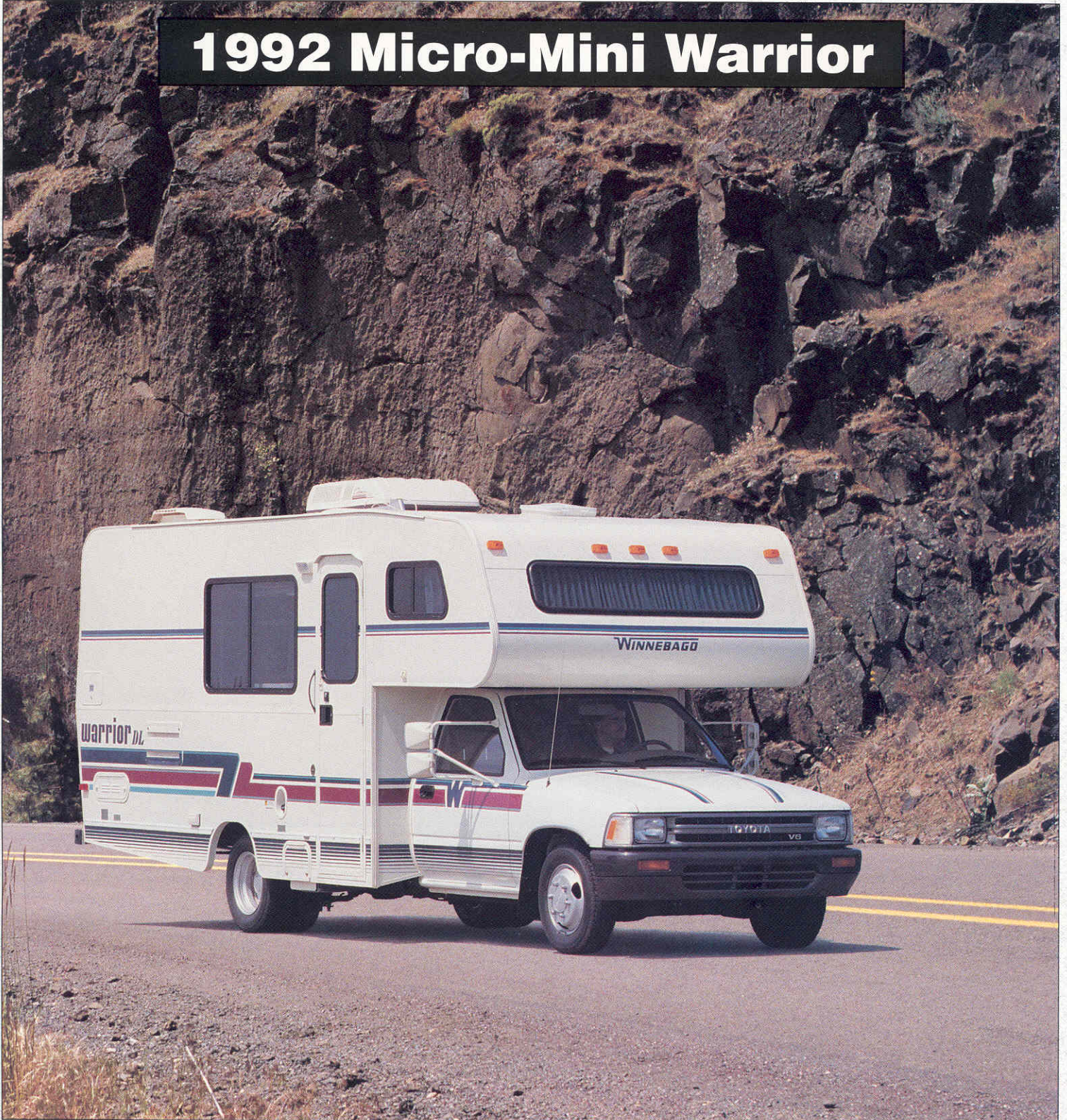
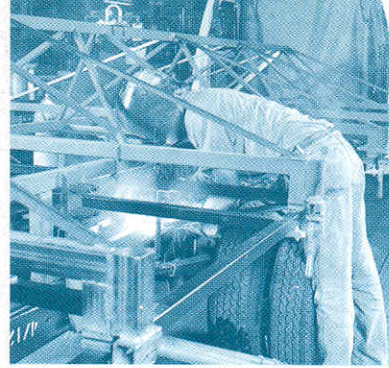
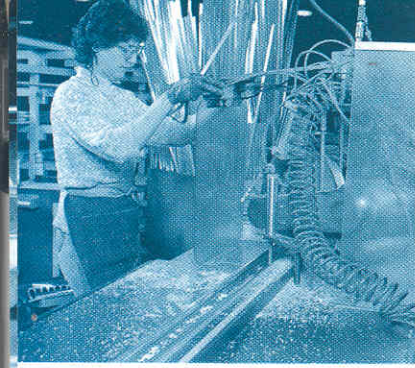


WINNEBAGO[®]

THE MOTOR HOME PEOPLE

1992 Micro-Mini Warrior





Roomy, efficient interiors are a Winnebago trademark. Appealing decoration, beautifully constructed oak-doored cabinetry, and fine quality fabrics and carpeting featuring Scotchgard™ Protector make Micro Warrior the smart choice.

Scotchgard™ is a registered trademark of 3M



Two handsome interior decors are available—Desert Flower (left) or Indian Summer (right).

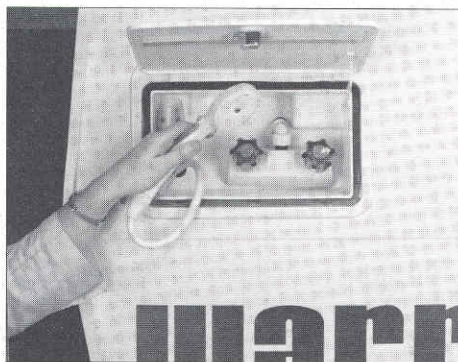
Upscale Accomodations in a Downscale Size.

Our most popular motor home of 1991 is back and better than ever. The Micro-Mini Warrior® is the



Distinctively Winnebago. Smooth (not ribbed) sidewalls feature Winnebago's tried and true Thermo-Panel® wall and roof construction. Expansive, tinted picture windows welcome sunlight from both sides. Integrated tail and running lights, rear mud flaps and a spacious storage compartment round out the exterior highlights, all standard.

No tracking in sand and dust from beaches and campgrounds, thanks to the Micro-Mini's handy exterior shower.



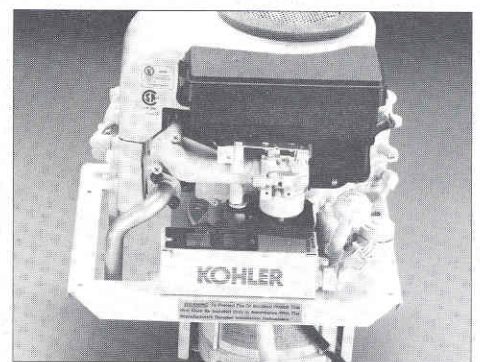
New interior decor and exterior graphics

With the introduction of the Micro Warrior, Winnebago established industry standards for precision engineering and quality craftsmanship in a compact motor home. For 1992, we're pleased to offer two new decors, each with stylish, attractive appointments. Outside, exciting new graphics make the Micro-Mini look as good as its runs.

New deluxe upgrade package

Enjoy the ultimate in style and comfort with a complete custom package of interior and exterior extras. From deluxe graphics, to cab carpeting to a wide array of interior enhancements, form meets function with this value-added ensemble. See page 6 for a complete listing of package options.

An optional 110-volt generator packs 2500 watts of convenient power, for when electrical hook-up is unavailable.

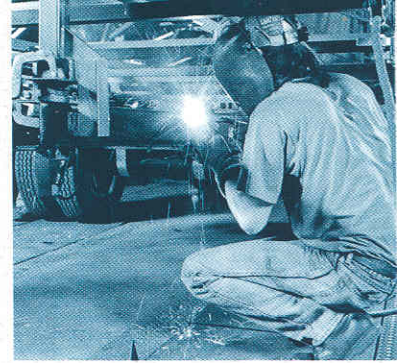
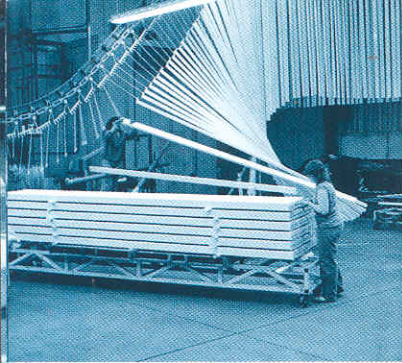


ideal motor home for the times: compact and maneuverable, efficient and powerful, yet fully equipped for comfort.

Sporting a rugged Toyota chassis with fuel-injected V-6 engine, a full

array of standard features and a selection of three popular floorplans, the Micro-Mini excels on the road to Yosemite, a weekend jaunt to a state park, or even a quick trip to the office. All this, yet it's priced below many cars!

Whether you're a first time motor home buyer or a veteran motor home owner, you'll feel right at home in the all-purpose 1992 Winnebago Micro-Mini Warrior.



THE MOST COMPREHENSIVE PEACE OF MIND PACKAGE ANYWHERE.

Included with every 1992 Winnebago motor home. Only from Winnebago Industries.

Preferred Care Program

For the first year of new Winnebago motor home ownership, the Winnebago Industries Preferred Care Program provides exceptional peace of mind through a special 24-hour toll-free roadside service network.

Special Program Features:

- 24-Hour Nationwide Toll-Free Hotline - U.S. and Canada
Staffed every day of the year by experienced RV service professionals. Includes access to the following services.
- Emergency Road Service - 24-hour dispatched emergency road service and towing. Provided through a network of over 20,000 prequalified service locations, including Winnebago Industries dealers.
- 24-Hour Customer Service Assistance - Preferred Care representatives provide fast, immediate access for technical assistance questions and if needed, to qualified RV warranty service agencies nationwide. Customer service representative helps define service problem, makes service appointment and gives directions to the provider for the owner while he is on the line.
- Special Winnebago Owner Plastic I.D. Card and Service Guide - Card includes owner's identification and toll-free phone number information. The guide explains the program's services.

After the first year of ownership has passed, the Preferred Care plan can be extended, through the Winnebago-Itasca Travelers (W.I.T.) Club.



Customer First Warranty Plan

Also included with every 1992 Winnebago motor home is an impressive package of extended warranty coverage on structural and exterior components. Winnebago Industries' vehicles lead the industry in structural integrity, which is reflected in their excellent resale value retention over the years.

Standard Warranty Coverage

Every Winnebago motor home is covered by Winnebago Industries' standard 12 month, 15,000 mile limited warranty. See your dealer for full details.

Extended 36 Month/36,000 Mile Structural Warranty

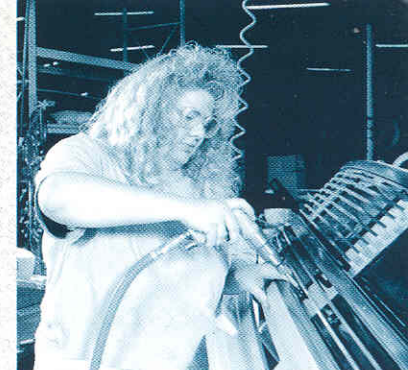
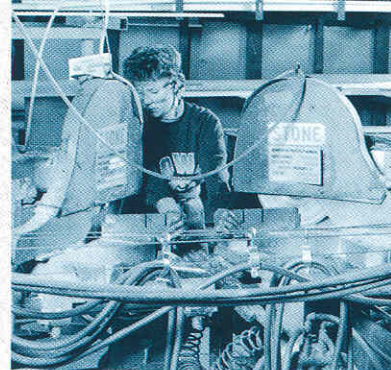
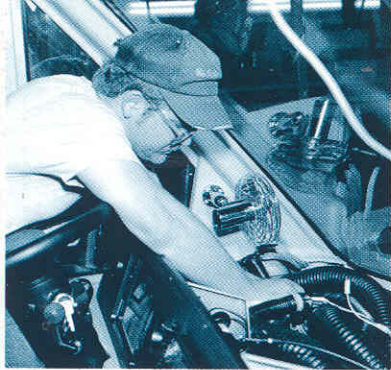
Following the expiration of the standard Winnebago Industries warranty and for the remainder of the period of 36 months or 36,000 miles on the odometer, whichever comes first, Winnebago Industries will warrant the following to the first motor home owner:

- 1) Sidewall and backwall Thermo-Panel® lamination against delamination. Thermo-Panel lamination is the bonding of the exterior skin and the interior paneling to an insulating core material.
- 2) Exterior fiberglass panels used in the construction of the roof, sidewalls and backwall will remain free from surface fiber exposure and will not rust, rot, corrode, or require painting or refinishing (normal pigmentation change excepted) under normal conditions of use.

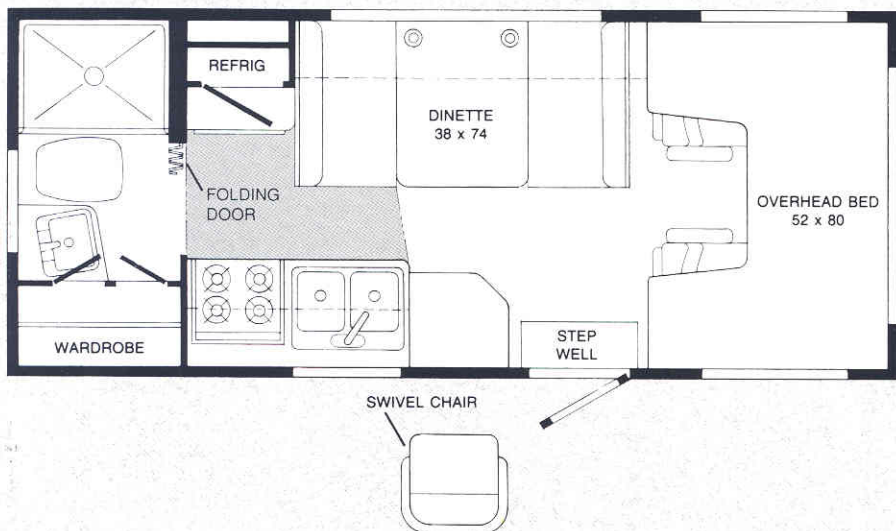
Additional 10 Year Coverage

As an indication of Winnebago Industries confidence in their products, limited warranty coverage on roof and sidewall surface materials for the period of 10 years from date of purchase, for the first owner only, is included with every 1992 Winnebago motor home.

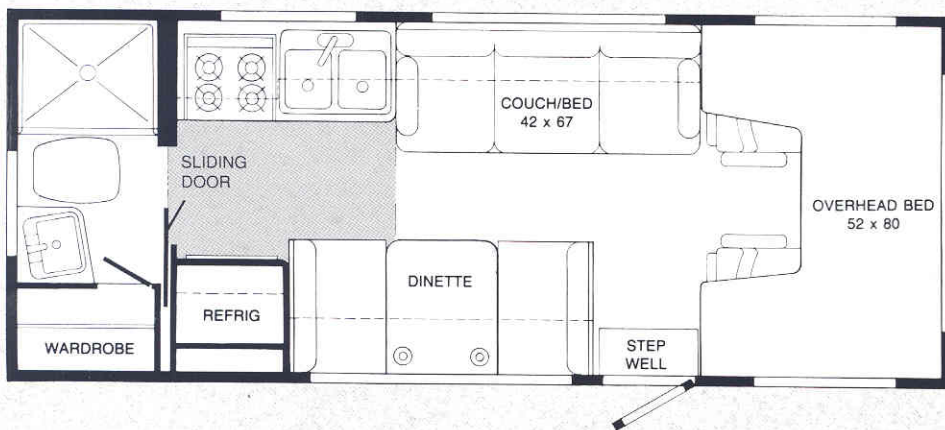
See your dealer for complete details on the complete Winnebago Industries Customer First Warranty Plan coverage. Vehicles in service for commercial use are not included in the 36 month/36,000 mile and 10 year warranty coverage.



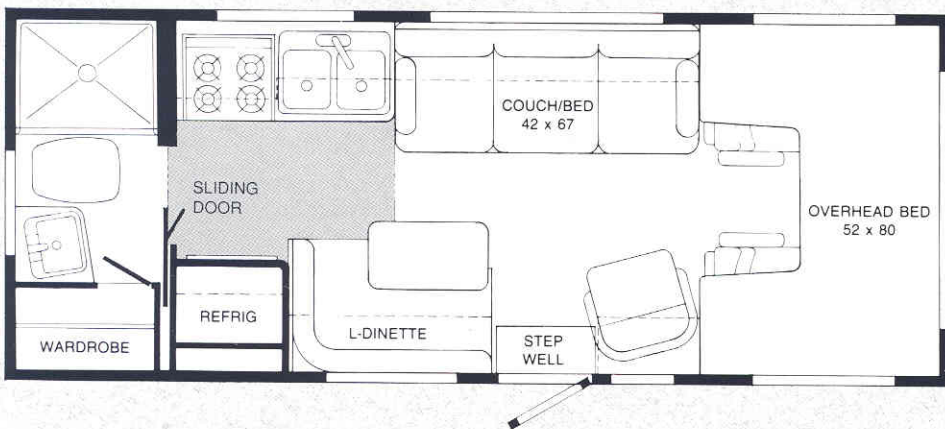
1992 Warrior Floorplans



Model 320RB - Packs plenty of livability into a shorter length by offering a large convertible dinette with choice of storage cabinet or comfortable lounge chair.

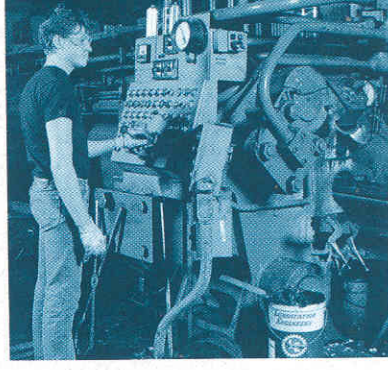
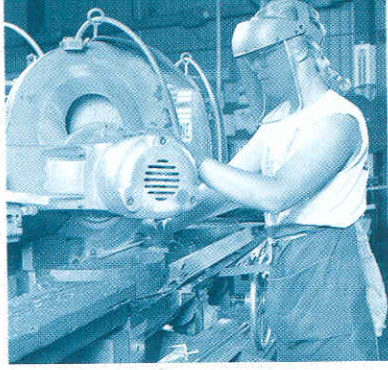
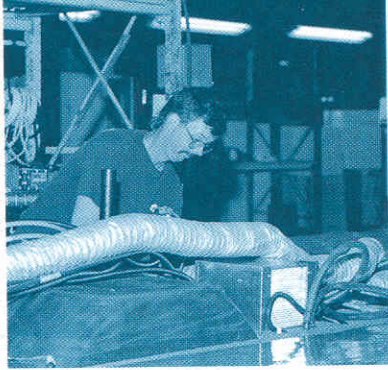


Model 321RB - Features an open living area with a convertible couch and a comfortable dinette. Beautiful views can be seen through large picture windows on both sides of the motor home.



Model 321RL - An L-shaped dinette allows for extensive living area with a convertible couch and a convenient swivel lounge chair. This compact design offers it all.

NOTE: Dimensions shown are for sleeping space only and dotted lines denote overhead storage area. Shaded area indicates optional vinyl floor covering.



SPECIFICATIONS: 1992 MicroWarrior 320RB 321RB 321RL

Length	20'7"	21'5"	21'5"
Exterior Height w/Roof Air	9'2"	9'2"	9'2"
Exterior Width	7'1"	7'1"	7'1"
Interior Height	6'2"	6'2"	6'2"
Interior Width	6'9"	6'9"	6'9"
Fuel Capacity (Gals.)	17.2	17.2	17.2
Fresh Water Capacity (Gals. w/Heater)	18	18	18
Holding Tank Capacity (Gals.)			
Main	14	14	14
Auxiliary	14	14	14
LP Capacity (Lbs.)	28	28	28
Electronic Ignition Furnace (BTUs)	17,000	17,000	17,000
GVWR (Lbs.)	6,000	6,000	6,000
Wheelbase	137"	137"	137"

STANDARD EQUIPMENT*

AUTOMOTIVE FEATURES:

Toyota Chassis: V-6 Fuel-Injected Gasoline Engine
Automatic Transmission w/Overdrive & Cooler
Front Suspension: Wishbone, Torsion Bars
Rear Suspension: Semi-Elliptic, Leaf Spring
Rear Air Springs (Optional on 320RB)
Radial Tires
60-Amp. Battery
60-Amp. Alternator
Intermittent Windshield Wipers
High/Low Beam Headlight Control
Switch on Smart Stick
Automotive Air Conditioning
Power Assist Steering w/Tilt Wheel
Toyota Factory Cruise Control
Electronic Tune AM/FM
Cassette Stereo w/Speakers & Digital Clock
Bucket Seats (Stain-Resistant, Fabric Covered, w/3-Point Retracting Seatbelts)
Map Light & Map Pocket Sunvisors
Remote Hood Release
Cab Divider Curtain & Overhead Bed Privacy Curtain

APPLIANCES/SAFETY FEATURES:

4-Burner Range Top
Microwave Prep Kit
Powered Range Hood w/Light
Refrigerator w/Freezer Compartment
Direct Drive Water Pump
Double Stainless Steel Sink & Dual Control Faucet
17,000 BTU Electronic Ignition Furnace
4-Gal. LP Water Heater
32-Amp. Converter/Battery Charger & Power Cord
LP Leak Tester & Smoke Detector
Ground Fault Interrupter
10-B.C. Fire Extinguisher
Monitor Panel - Water, LP & Holding Tank Levels, Battery Condition Gauge & Water Pump Switch

INTERIOR FEATURES:

Stain-Resistant Carpeting
Carpeted Cab Floor Mats
Coach Ceiling Vent
Decorator Wall Clock
Cabinet Doors - Oak Framed w/Radius Edged, Flat Panel Inserts, Brass Handles
w/Back-plate & Prop Rod

Front Overhead Bed w/Adjustable Reading Lamp, Side Windows & Lined Drapes
Cedar-Lined Wardrobe w/Full-Length Mirrored Door
Mini Blinds w/Padded Window Treatments
Lavatory w/Molded Soap Dishes
Shower w/Flexible Shower Head, Curtain & Track
Dual Control Lavatory & Shower Faucets
Marine Toilet
Medicine Cabinet w/Mirrored Door
Towel Ring, Bar & Tissue Holder
Bath Door - Sliding (321RB & 321RL) or Folding (320RB)
Power Bath Vent

EXTERIOR FEATURES:

Deep Cycle Auxiliary Battery
Porch Light & 110-V Curbside Outlet
Storage Compartments w/Locking Doors
Sewer Hose Stored in Rear Bumper
Lockable Water Fill Door
Entrance Door w/Frosted Window & Screen Door
Roof Air Pre-Wiring
Awning Extrusion Rail
Tire Tools (Jack & Jack Handle)
Tinted Windows

WARRANTY:

Complete Details of Warranty Terms and Conditions are Available at Your Winnebago Dealer.

OPTIONAL EQUIPMENT*

5-Speed Manual Transmission w/Cooler
2,500-Watt Generator -Insulation, 110-V Wiring, Generator Start Switch, Hourmeter & Low Oil Shutdown Light
Generator Prep Kit -Ventilated Door & Gas Lines
7,100-BTU Roof Air Conditioner

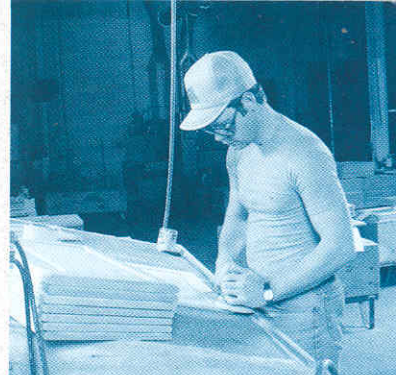
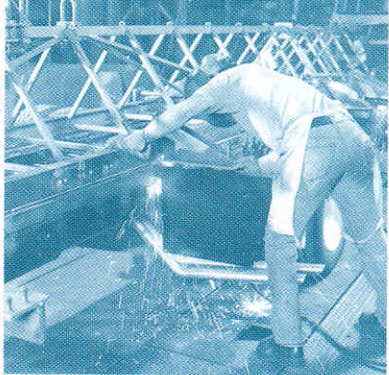
Deluxe Upgrade (321RL & 321RB) - Exterior Graphics Upgrade, Deluxe Radio, Cassette Holder Below Ashtray, Single Control Galley Faucet, Sink Cover, Fabric Trim Panel on Driver & Passenger Doors, Cab Carpet, High-Gloss Black Refrigerator Door, Throw Pillows (Couch & Overhead Bed), Off-White Shower Curtain Rod, Brass Cafe Rod w/Fabric Valance, Spice Rack, Key Rack above Entrance Door, Cabinet above Refrigerator w/Mirror, Fabric Panel Inserts on Overhead Cabinets & Lower Lavatory Cabinet

4-Burner Range w/Oven
Microwave Oven
Power Pack - Microwave, Roof Air Conditioner, 2,500-Watt Generator w/Insulation, 110-V Wiring, Generator Start Switch, Hourmeter & Low Oil Shutdown Light
TV Antenna w/Jack, Coax Cable & Cable Ready
Vinyl Galley Flooring
Spare Tire
Exterior Shower Faucet
Color Options:

Desert Flower - Multi-Colors of Eggplant, Blue-Green & Taupe on Flat-Woven Texture
Indian Summer - Multi-Colored Wild Flowers on Medium Brown Velvet

*Not all standard features or options are available on all models. See your dealer for availability of specific options.

Winnebago Industries' continuing program of product improvement makes specifications, equipment, model availability and prices subject to change without notice.



All the conveniences of home are here. Vanity with generous sink, stand-up shower, mirrored medicine cabinet and handy wardrobe closet combine for a deluxe bath on wheels.



Standard equipment designed to meet your standards. Extra roomy overhead bed area sleeps two comfortably. Automotive air, power steering, cruise control, electronic tune AM/FM cassette stereo and fabric-covered bucket seats make driving a sheer delight.

Winnebago's recipe for kitchen convenience: 1 four-burner range, 1 refrigerator/freezer, 1 double stainless steel sink, 1-power range hood. Add generous amount of storage space. The optional oven or microwave make for easy food preparation.





ONLY FROM THE MOTOR HOME PEOPLE.



When you buy a Winnebago motor home, you're purchasing more than a great vehicle. You're purchasing a history of craftsmanship.

Winnebago doesn't just assemble motor homes, we are a true manufacturer. Most of our components are designed and built on-site, in the industry's largest manufacturing facility. We produce all of our own structural parts. Fiberglass. Aluminum. And most of our own furniture, including hand-crafted cabinetry.

That's the only way Winnebago builds motor homes. It's why we build them so well.

and services, and meet new friends who share your enthusiasm for motorhoming. For more information, call W.I.T. at 515-582-6874.



Only the best parts ever see the inside or outside of a Winnebago. Our comprehensive testing program ensures it, on-site, in the industry's largest testing facility.

Our own half-mile test track, ridden with bumps, chuck holes and cobblestones measures structural soundness. Rain-tunnel high pressure hoses blast vehicles with the force of a thunderstorm. Vibration, rust, chip resistance, weight distribution... the testing goes on and on.

Quality assurance. It's just one reason why Winnebago motor homes retain a higher resale value than any competitive motor homes.

motor homes on display. Discover how they're constructed. And tour the industry's most impressive manufacturing complex. Best of all, you'll witness first hand the Winnebago Industries commitment to motorhoming.

Call 1-515-582-3535 for further information.



Behind every Winnebago motor home stand Winnebago people: designers, engineers, assemblers, quality inspectors, dealers and hundreds more. Each is an integral part of Team Winnebago. All work together to provide you with the finest motor home you can buy.

For 33 years, quality recreational vehicles have been our business. That long-term commitment continues today.

Pride in our team. Pride in our product. For you, it means pride of ownership.



As a Winnebago owner, you are invited to join the Winnebago-Itasca Travelers (W.I.T.) Club. Enjoy rallies and caravans, receive dollar-saving discounts



To see how the best-built motor homes are created, come to Forest City, Iowa and take the free Winnebago Industries factory tour. You'll preview

For Winnebago Sales and Service, Contact:

Micro Mini Warrior
WINNEBAGO
THE MOTOR HOME PEOPLE

©1991 Winnebago Industries, Inc. Forest City, IA 50436 Printed in U.S.A.