

A New Favorite From the Class C Leader.



2006 WINNEBAGO OUTLOOK™





THE NAME ISN'T THE ONLY THING THAT'S NEW.

Couple an impressive list of innovative features with Winnebago quality craftsmanship and what do you get? The all-new Winnebago Outlook.



31C - Meadow Green with Sierra Maple

**THERE'S SOMETHING FOR EVERYONE IN THE ALL-NEW OUTLOOK.**

Step inside and you'll recognize Winnebago quality innovations throughout the 2006 Outlook. From the RV Radio® and Stitchcraft furniture to the SmartSpace™ design philosophy that makes the most of available space, the Outlook is filled with user-friendly features. Including wall-mounted light switches and day/night pleated shades to help you manage the amount of light in the lounge, dinette and bedroom. Choose Portsmouth Oak or Sierra Maple cabinets to go with any of the 10 available floorplans. Or choose the optional Deluxe Package upgrade (shown here); new for 2006, this package gives you stylized aluminum wheels,

decorative glass doors in the living area, a raised-wood-panel refrigerator insert, upgraded lighting, a built-in knife holder in the galley, and more...

The bedroom on the 29B features a queen-sized bed that has plenty of underbed storage. There's also additional storage in the deep, overhead cabinets and spacious wardrobe. The vanity area, complete with tip-up mirror, doubles as a convenient place to write letters or surf the Net with a laptop computer. Regardless of what you're looking for in a Class C motor home, the 2006 Outlook is sure to offer something that will fit you just right.



29B - Gingersnap with Portsmouth Oak

On the cover: 31C with Deluxe Graphics in Sandstone Beige Metallic.



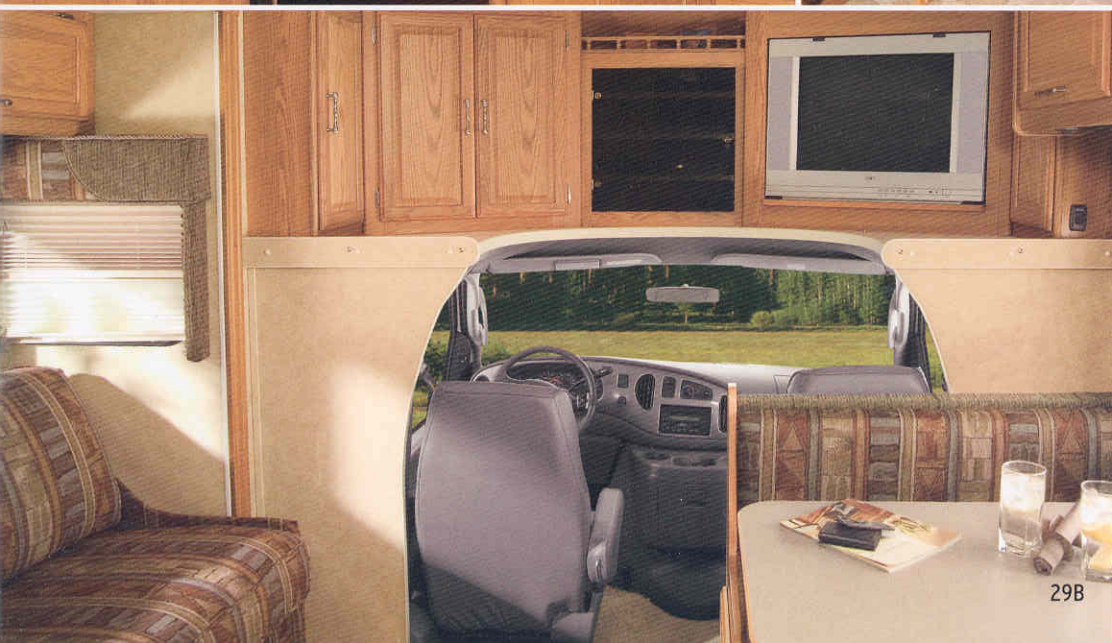
JUST WHAT YOU'VE BEEN LOOKING FOR.

*An available feature-filled entertainment center and user-friendly galley await inside the Outlook.*



### COOK UP A STORM.

Cooking is a snap with the three-burner Magic Chef® range/oven and built-in microwave with lighted range hood. Or choose the available microwave/convection oven and three-burner range top with storage drawer. The double sink is sized to accommodate plates and pans and includes a sink cover for more work space. Several models also offer a flip-up countertop extension for additional counter space. A large pantry gives you plenty of room for food storage (not available on 24V and 31C). Full-extension drawer slides make for easy access to all your stored items. For cold, filtered drinking water anytime, choose the available water filtration system.



### DESIGNED FOR YOUR COMFORT.

You control the climate with thermostat-controlled, ceiling-ducted air conditioning and an available roof air-heat pump that keeps you warm on chilly mornings without using the furnace. And with amenities such as plush Stitchcraft furniture; stylish and functional cabinets; and easy-to-clean, no-wax vinyl floors, you can enjoy the comforts of home anywhere. For greater seating flexibility while traveling, every Outlook comes with multiple seat belts and a child-seat tether in the forward-facing dinette seat. The dinette also converts into a comfortable bed. The standard front bunk area gives you even more sleeping capacity.

For your viewing pleasure, choose the available front entertainment center, complete with 24" TV and Video Selection System. An optional Home Theater Sound System upgrade adds a DVD/VCR combo, receiver, amplifier, five recessed speakers and subwoofer for incredible audio. Watch TV when shoreline or generator power is not available by choosing the optional 300-watt inverter. (Entertainment options listed above are not available on 22E or 22R.)



MORE INNOVATIONS. MORE ENJOYMENT.

From our exclusive Trimline™ center console that provides more legroom to the large buttons on the RV Radio, great care goes into making your experience in our motor homes more enjoyable.



**SIRIUS**  **RV-RADIO** 

Interior chassis cab color selection may change at chassis manufacturer's discretion. Please see your dealer for latest specifications.

Inset: Optional Chevrolet chassis available mid-model year.



**ONE DRIVER-FRIENDLY DASH.**

Once behind the wheel, sit down and enjoy the high-back, fixed lumbar support of custom cab seating with a multi-adjustable recline mechanism — choose the available leather upholstery for added luxury. For a touch of class, the cockpit pictured above features the available dash appliqué. Controls, switches and gauges in the Outlook are all sized and positioned for easy operation, including power window and door locks. The available LCD rearview monitor can be used for easy maneuvering when backing up.

Move from cab to living area with ease, thanks to our exclusive, less bulky Trimline center console\* — a Winnebago Industries exclusive.

\*Ford Chassis only.



**HIGH-TECH CONVENIENCE.**

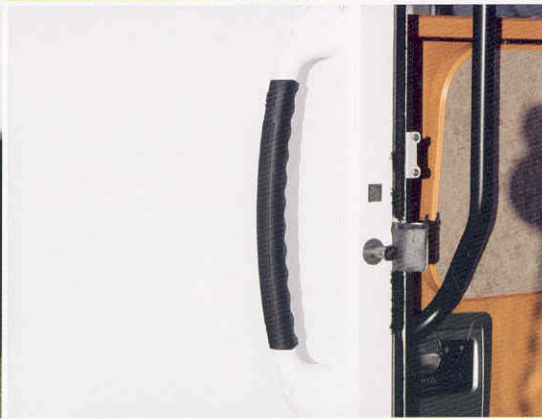
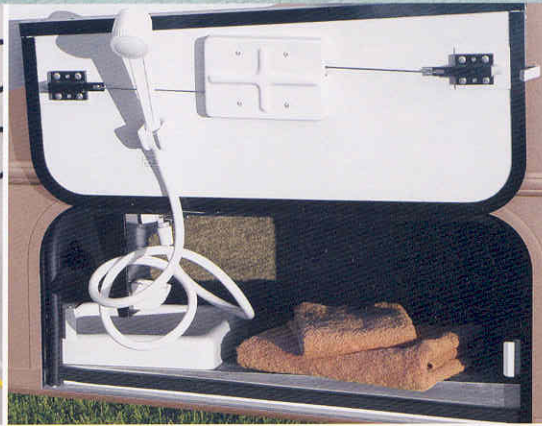
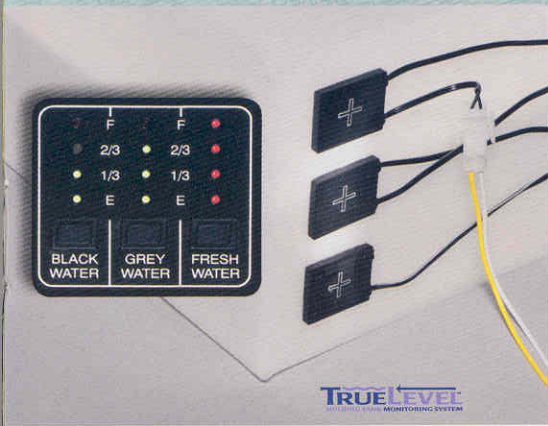
Enjoy the convenience of standard keyless entry remotes that lock and unlock driver, passenger and entry doors. The RV Radio features an AM/FM stereo with CD player, a built-in weather band for weather updates at the push of a button and two remotes — one attached to the steering wheel and one handheld for use while parked. Upgrade your RV Radio with the available Sirius® Satellite radio package. Sirius brings you 120 channels of crystal clear programming, and a six-month subscription is complimentary with this package. (Available with Ford chassis only. Sirius upgrade not available in Canada.)

Great reception isn't limited to time spent behind the wheel. By choosing the portable two-way radios, you can stay connected with others in your group. The four handsets have up to a five-mile range and recharge from the coach's house batteries at their built-in charging station.



## HIGH TECH CONVENIENCE.

*Inside and out, the Outlook is filled with thoughtful touches to enhance your life on the road.*



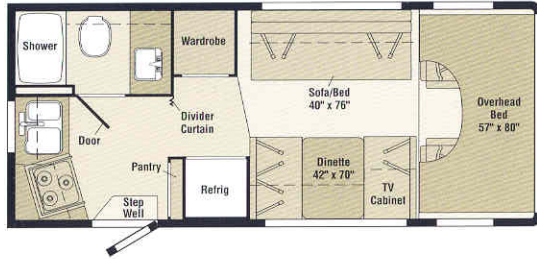
## IT'S NOT JUST LITTLE THINGS THAT SET THE OUTLOOK APART.

Our exclusive TrueLevel™ holding tank monitoring system uses Mirus\* detector cells to determine liquid levels from outside the tank, putting an end to inaccurate tank-level readings. The convenient exterior wash station with lighted pump switch helps keep dirt and grime where it belongs — outside. Our StoreMore® remains the industry's premier slideout system and features large storage compartments that extend with the slideroom so you do not have to crawl under the slideout to load and unload your belongings (featured on 31C and 32G). Tow up to 5,000 pounds of fun using the standard hitch, with seven-pin connector. Even entering the Outlook is more comfortable with our new soft-touch handle. The available exterior entertainment center features an AM/FM stereo, remote-control CD player, 12-volt DC receptacle, TV jack, 110-volt outlet, speakers and a removable table. It also locks to keep things safe. Innovative rear storage compartments (25F and 26A) feature wire shelving and hooks to help keep items organized and easy to access. The 25F even features a removable wastebasket that can be accessed from the galley.

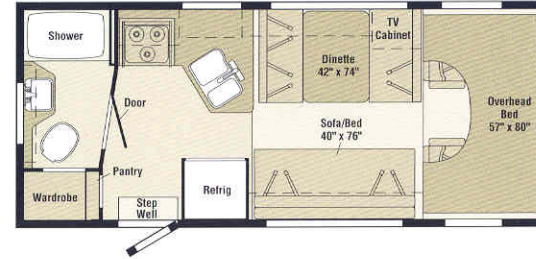
\*Mirus is a trademark of Material Sciences Corporation.



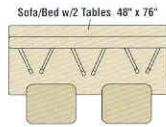
22E



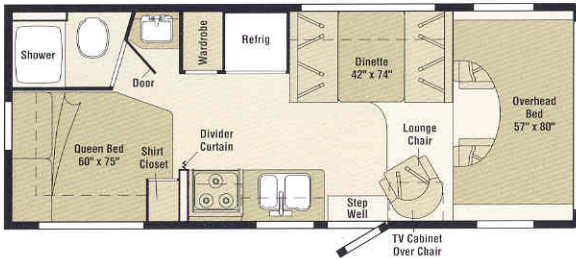
22R



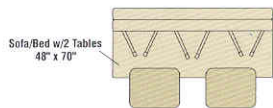
24V



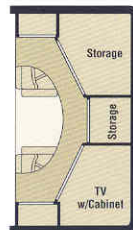
\*Not available as sleeping space in Canada



Optional Front Overhead Area

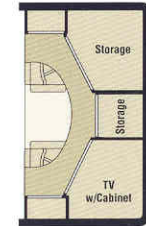


26A



Optional Front Overhead Area

25F NEW



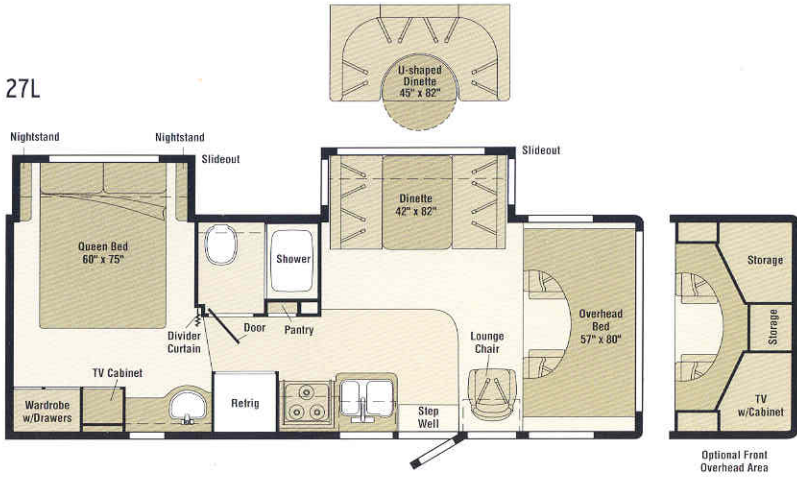
Optional Front Overhead Area



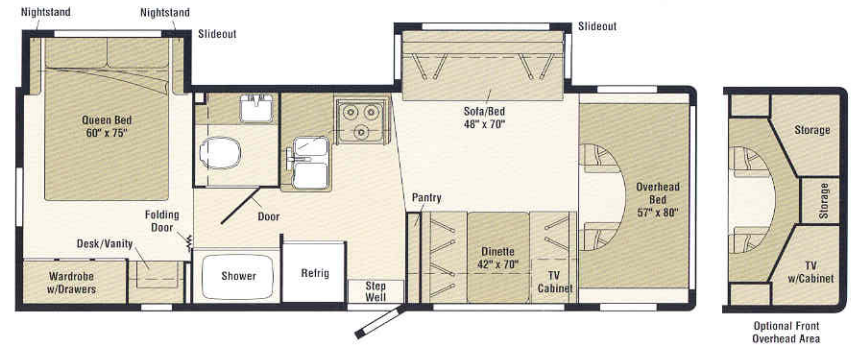
Note: Dimensions shown are for sleeping space only and may vary due to styling differences.

EVERY DETAIL IS ACCOUNTED FOR.

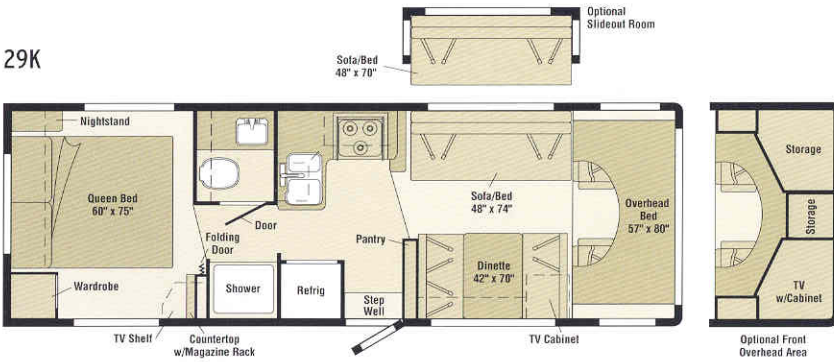
27L



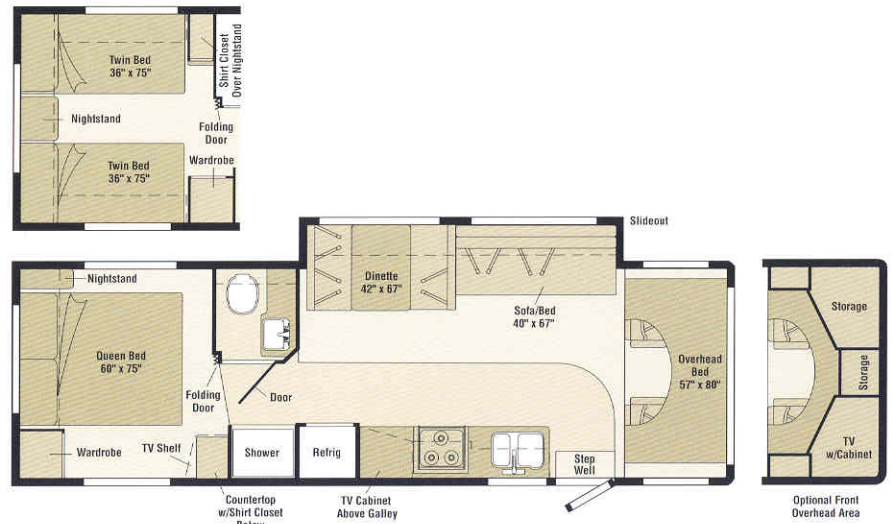
29B



29K



31C



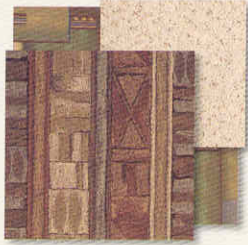
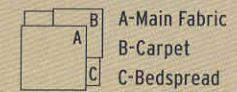
32G





BUILT TO LAST.

INTERIORS/EXTERIORS



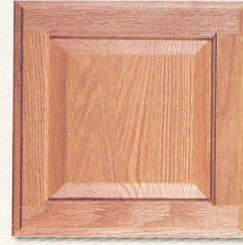
Gingersnap



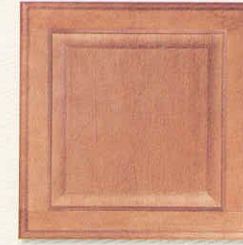
Meadow Green



Stonedust



Portsmouth Oak



Sierra Maple

We believe the same high standards we apply to construction should apply to interior design. That's why we create efficient floorplans based on customer input, why we look for durable fabrics in pleasing colors, and why we handcraft our own cabinets using traditional panel-and-rail construction.

### GET A LIFETIME OF GOOD FIRST IMPRESSIONS.

Better construction leads to a better motor home. Our one-piece fiberglass sidewall makes the Outlook incredibly resilient to the elements.

Choose the available Deluxe Graphics Package for an even more upscale look. It includes fiberglass running boards and lower valance paint.

Stainless steel wheelcovers come standard, or upgrade your wheel package with the available stainless steel wheel liners.

### Deluxe Graphics



Steel Blue Metallic

### Standard Graphics



Light Charcoal Metallic



Sandstone Beige Metallic







# 2006 OUTLOOK SPECIFICATIONS

Standard - S Optional - O	22E	22R	24V	25F	26A	27L	29B	29K	31C	32G
<b>Sirius Satellite Radio</b> (available w/Ford chassis only, not available in Canada)	0	0	0	0	0	0	0	0	0	0
<b>DVD/VCR Stereo w/remote</b>			0	0	0	0	0	0	0	0
<b>Entertainment Center w/CD Player</b> (exterior) remote, DC receptacle, AC duplex receptacle, AM/FM radio, TV jack, radio antenna, removable TV table, speakers (2)	0	0	0	0	0	0	0	0	0	0
<b>Home Theater Sound System</b> DVD/VCR combo, amplifier, receiver, speakers recessed (5)			0	0	0	0	0	0	0	0
<b>Radios (4)</b> 2-way, docking port w/charger, multichannel	0	0	0	0	0	0	0	0	0	0
<b>Satellite Dish Antenna</b> RV digital, elevation sensing unit, manual	0	0	0	0	0	0	0	0	0	0
<b>TV 13" Color 12-Volt DC &amp; DVD</b> w/remotes, front lounge/dinette area w/slide/swivel shelf, Audiovox®	0	0	0	0	0	0	0	0		0
<b>TV 20" Color Stereo</b> w/remote, Video Selection System, galley overhead cabinet, RCA®									0	
<b>TV 24" Stereo Color AC</b> flat-face w/remote, Video Selection System, RCA			0	0	0	0	0	0	0	0

## DELUXE FEATURE PACKAGE

<b>Deluxe Feature Package</b> stylized aluminum wheels, glass front overhead doors, dinette cushion upgrade, knife holder, single lavatory faucet, halogen couch overhead lights, picture, lights, raised-wood panel refrigerator insert, sofa pillows (2), wastebasket, decorative clock, front bunk window treatment upgrade	0	0	0	0	0	0	0	0	0	0
--	---	---	---	---	---	---	---	---	---	---

## INTERIOR

<b>Bunk</b> front overhead w/mattress, awning windows, privacy curtain, storage cabinet, bunk ladder, <b>Ceiling fabric</b> , <b>Lights</b> ceiling, incandescent w/wall switches, <b>Roof Vent</b> nonpowered, front overhead bunk, <b>Shades</b> pleated, day/night (lounge, dinette, bedroom), mini blinds (bath, galley)	S	S	S	S	S	S	S	S	S	S
<b>Bunk Window</b> front delete	0	0	0	0	0	0	0	0	0	0
<b>Mirror</b> lounge				S		S			S	
<b>Roof Vent</b> nonpowered, lounge			S	S	S	S	S	S		S
<b>Roof Vent</b> powered, ventilator fan, front overhead bunk or lounge	0	0	0	0	0	0	0	0	0	0
<b>Wardrobe Cabinet</b> carpeted shelf, clothes rod, mirrored door(s)	S	S	S	S	S					S

## CABINETRY

<b>Portsmouth Oak or Sierra Maple</b> stile-and-rail construction w/raised-panel inserts on upper doors	0	0	0	0	0	0	0	0	0	0
---	---	---	---	---	---	---	---	---	---	---

## COUNTERTOPS

<b>Laminate</b> w/T-molded edge	S	S	S	S	S	S	S	S	S	S
---------------------------------	---	---	---	---	---	---	---	---	---	---

## FLOORCOVERING

<b>Carpeting</b> w/pad, <b>Vinyl</b> main entry, bath & galley	S	S	S	S	S	S	S	S	S	S
--	---	---	---	---	---	---	---	---	---	---

22E 22R 24V 25F 26A 27L 29B 29K 31C 32G

## FURNITURE

<b>Dinette</b> access to storage below	S	S	S	S	S	S	S	S	S	S
<b>Dinette</b> (rear) L-shaped			0							
<b>Dinette</b> U-shaped w/access to storage below, slide-out baskets						0				
<b>Lounge Chair</b> w/swivel/slide			S		S	S				
<b>Sofa</b>	S	S		S			S	S	S	S
<b>Sofa</b> w/2 pedestal tables			0		0					

## GALLEY

<b>Faucet</b> single-control, Moen®, <b>Microwave Oven</b> Whirlpool®, <b>Range</b> 3-burner w/oven, Magic Chef, <b>Receptacle(s)</b> duplex, <b>Refrigerator/Freezer</b> double-door, Norcold®, <b>Sink</b> recessed, molded, double w/sink cover (countertop material), <b>Wall Border</b>	S	S	S	S	S	S	S	S	S	S
<b>Countertop</b> flip-up extension			S		S	S	S	S	S	S
<b>Microwave/Convection Oven</b> <sup>h</sup> touch control, Sharp®	0	0	0	0	0	0	0	0	0	0
<b>Pantry</b>	S	S		S	S	S	S	S		S
<b>Range Hood</b> ductless w/light & fan	S									
<b>Range Hood</b> vented w/light & fan		S	S	S	S	S	S	S	S	S
<b>Range Top</b> 3-burner w/drawer below	0	0	0	0	0	0	0	0	0	0
<b>Spice Rack</b>		S		S						
<b>Water Purification System</b>	0	0	0	0	0	0	0	0	0	0

## BATH

<b>Cabinet</b> lavatory, <b>Cabinet</b> medicine, <b>Faucet</b> (lavatory) dual-control, <b>Faucet</b> (shower) dual-control w/flexible showerhead, <b>Roof Vent</b> power, <b>Shower</b> skylight, <b>Toilet</b> w/foot-pedal flush & sprayer, <b>Towel Rack</b> 3-rod, mounted to door	S	S	S	S	S	S	S	S	S	S
<b>Clothes Rod</b> removable	S	S	S	S	S	S	S	S	S	
<b>Mirror</b>	S			S			S	S	S	
<b>Shower Door</b> folding	S	S	S	S	S	S	S	S	S	
<b>Shower Door</b> glass							0	0	0	S
<b>Sink</b> oval					S	S				S
<b>Sink</b> rectangular w/molded soap dishes	S	S	S	S			S	S	S	

## BEDROOM

<b>Bed</b> Serta®, queen			S		S					
<b>Bed</b> Serta, queen w/underbed storage						S	S	S	S	S
<b>Beds</b> twin w/underbed storage									0	
<b>Beds</b> pread pillow shams, pillows						S	S	S	S	S



# 2006 OUTLOOK SPECIFICATIONS

Standard - S Optional - O	22E	22R	24V	25F	26A	27L	29B	29K	31C	32G
<b>Light(s)</b> decorative wall lamp(s)						S	S	S	S	S
<b>Nightstand(s)</b> w/drawer(s)						S		S	S	S
<b>Roof Vent</b> nonpowered						S	S	S	S	S
<b>Shirt Closet</b>			S		S				S	
<b>TV Shelf 13"</b> (TV not included)								S		S
<b>Vanity Cabinet</b> w/flip-up countertop, stool w/removable seat cushion for storage inside							S			
<b>Wardrobe Cabinet(s)</b> drawers						S	S	S	S	S

## EXTERIOR

<b>Awning Rails</b> w/rain gutters, <b>Door</b> entrance w/separate screen door, deadbolt lock, keyless entry w/remote, <b>Entrance Door Step(s)</b> manual, <b>Exterior Graphics Package</b> (w/protective film below entry door), <b>Ladder</b> , <b>Light</b> porch w/interior switch, <b>Mudflaps</b> rear, <b>Receptacle</b> AC duplex, <b>Running Boards</b> aluminum, <b>Sidewall Skin</b> one-piece smooth fiberglass, <b>Storage Compartment</b> w/trunk liner, KeyOne™ System (NA rear storage compartments 25F, 26A)	S	S	S	S	S	S	S	S	S	S
<b>Awning</b> patio, vinyl			0	0	0	0	0	0	0	0
<b>Deluxe Graphics Packages</b> w/fiberglass running boards, Steel Blue Metallic or Sandstone Beige Metallic (w/protective film below entry door)	0	0	0	0	0	0	0	0	0	0
<b>Entrance Door Step(s)</b> electric w/doorjamb switch	0	0	0	0	0	0	0	0	0	0
<b>Trunk</b> rear, backwall, AC duplex receptacle, DC receptacle, shelves, storage baskets (25F only), storage hooks, TV antenna jacks, plastic tub w/drain hole				S	S					

## SYSTEMS

<b>Auxiliary Start Circuit</b> , <b>Battery</b> (coach) Group 24 deep-cycle, <b>Battery</b> (coach) disconnect system, <b>Battery Charge Control</b> automatic dual, <b>Drain 1"</b> water tank, <b>Dump Valve</b> manual, <b>Electrical Distribution System</b> DC fuses, AC breakers, 45-amp. electronic converter/charger, <b>Generator Prep Kit</b> , <b>Monitor Panel</b> wall-mounted, battery condition gauge, generator hourmeter gauge, generator start/stop switch, holding tank levels, LP tank level, water heater light(s), water heater switch, water pump switch, water tank level, <b>Power Cord</b> 30-amp., 25' <b>Sewer Hose</b> 10' stores in drain valve compartment, <b>Tank</b> LP, permanent mount w/gauge, <b>TrueLevel</b> holding tank monitoring system, <b>Water Heater</b> 6-gallon, electronic ignition, LP gas, <b>Water Hookup</b> city, <b>Water Pump</b> demand, <b>Water System Winterization Package</b> water heater bypass valve & siphon tube, <b>Water Tank Fill</b> w/locking door	S	S	S	S	S	S	S	S	S	S
--	---	---	---	---	---	---	---	---	---	---

a The height of each model is measured to the top of the tallest standard feature and is based on the curb weight of a typically equipped unit. The actual height of your vehicle may vary by several inches depending on chassis or equipment variations. Please contact your dealer for further information.  
 b Outlook floorplans feature a wide-body design — over 96". In making your purchase decision, you should be aware that some states restrict access on some or all state roads to 96" in body width. Before making your purchase decision, you should confirm the road usage laws in the states of interest to you.  
 c The load capacity of your motor home is designated by weight, not by volume, so you cannot necessarily use all available space when loading your motor home. d Capacities are based on measurements prior to tank installation. Slight capacity variations can result due to installation applications.  
 e Capacities shown are tank manufacturer's listed water capacity (W.C.). Actual filled LP capacity is 80% of listing due to overfilling prevention device on tank.  
 f Actual towing capacity is dependent on your particular loading and towing circumstances which includes the GVWR, GAWR, and GCWR as well as adequate trailer

	22E	22R	24V	25F	26A	27L	29B	29K	31C	32G
<b>Air Conditioner</b> (roof) 13,500 BTU, ceiling-ducted w/wall thermostat	S	S	S	S						
<b>Air Conditioner</b> (roof) 14,800 BTU, ceiling-ducted w/wall thermostat					S	S	S	S	S	S
<b>Batteries</b> (coach) (2) Group 24 deep-cycle	0	0	0	0	0	0	0	0	0	0
<b>Drainage System</b> <sup>h</sup> heated, electric, one heat pad per tank, pipe wraps & lighted on/off switch next to monitor panel	0	0	0	0	0	0	0	0	0	0
<b>Furnace</b> 25,000 BTU, low-profile	S	S	S	S						
<b>Furnace</b> 30,000 BTU, low-profile					S	S	S	S	S	S
<b>Generator</b> 4,000-watt, Onan® MicroQuiet™ gas	0	0	0	0	0	0	0	0	0	0
<b>Heat Pump</b> w/roof A/C	0	0	0	0	0	0	0	0	0	0
<b>Inverter</b> DC/AC, 300-watt			0	0	0	0	0	0	0	0
<b>Wash Station</b> exterior w/lighted pump switch	0	0	0	0	0	0	0	0	0	0

## SLIDEOUTS

<b>Slideout Room</b> front sofa/wardrobe w/slidoor cover				S						
<b>Slideout Room</b> front sofa w/slidoor cover							S	0		
<b>Slideout Room</b> rear bed w/slidoor cover						S	S			
<b>Slideout Room</b> dinette w/slidoor cover					S	S				
<b>Slideout Room</b> sofa/range w/slidoor cover StoreMore										S
<b>Slideout Room</b> sofa/dining w/slidoor cover StoreMore										S

## SAFETY

<b>Airbags</b> driver & passenger, <b>Assist Handle</b> exterior, <b>Assist Bar</b> interior entrance, <b>Brakelamp</b> high-mount, <b>Bumpers</b> front & rear, <b>Child Seat Tether Anchor</b> dinette, <b>Detectors/Alarms</b> LP leak, smoke, carbon monoxide, <b>Fire Extinguisher</b> 10 BC, <b>Ground Fault Interrupter</b> , <b>Light(s)</b> courtesy w/wall switch(es), <b>Seat Belts</b> cab, 3-point, <b>Seat Belts</b> lap (in selected areas)	S	S	S	S	S	S	S	S	S	S
<b>Window</b> escape			S		S	S	S	S	S	S

## WARRANTY<sup>i</sup>

<b>12-month/15,000-mile basic limited warranty<sup>j</sup></b> , <b>36-month/ 36,000-mile warranty on structure<sup>i</sup></b> , <b>10-year limited parts &amp; labor warranty on roof skin<sup>j</sup></b>	S	S	S	S	S	S	S	S	S	S
--	---	---	---	---	---	---	---	---	---	---

brakes. Please refer to the Operator's Manual of your vehicle for further towing information.  
 g Interior chassis cab color selection may change at chassis manufacturer's discretion. Please see your dealer for latest specifications.  
 h Not available in Canada.  
 i See separate chassis warranty details provided in Owner's Manual.  
 j See your dealer for complete warranty information.  
 Not all items available in combination. See dealer for details.  
 Winnebago Industries' continuing program of product improvement makes specifications, equipment, model availability, and prices subject to change without notice. Comparisons to other motor homes are based on the most recent information available.



NOT ALL MOTOR HOMES ARE CREATED EQUAL. As you take a closer look, you'll see that there is much more to the Winnebago Outlook than a long list of standard features and compelling floorplans. Beneath it all you'll find a SuperStructure® foundation of strength and durability, and Winnebago Industries' recognized service and warranty support.



We are committed to service. We back our motor homes with the best after-the-sale service in the industry. This includes a 12-month/15,000-mile basic limited warranty; 36-month/36,000-mile warranty on structure; standard 10-year limited parts-and-labor roof skin warranty; and complimentary 24-hour Roadside Assistance Program. TripSaver Fast Track Parts guarantees that in-stock warranty parts ship directly to your dealer within 24 hours. Winnebago Industries has a nationwide dealer service network.



Certified quality. Recreation Vehicle Dealer Association members annually rate RV manufacturers on the quality of their products, and on their sales and service support. Winnebago Industries has achieved the coveted Quality Circle Award every year since its inception, the only RV manufacturer to do so.



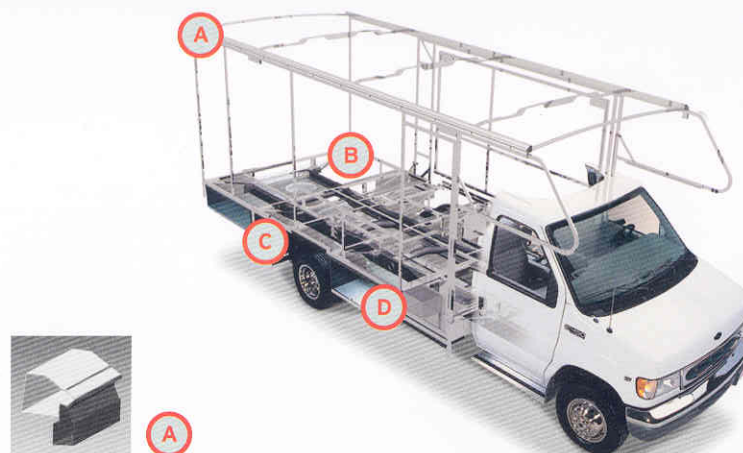
Warning: Joining WIT has been known to cause excessive fun. Winnebago-Itasca Travelers (WIT) is a club for owners of Winnebago Industries motor homes. WIT is a great way to meet people and offers you caravans and rallies, local and state group activities, and other benefits for RVers.



Seat belts are your most important hookup. Always buckle up.  
NYSE listing: WGO

Visit [www.winnebagoind.com](http://www.winnebagoind.com) for virtual product tours and the latest product updates.

©2005 Winnebago Industries Inc., Forest City, IA 50436. Printed in USA.



SUPERSTRUCTURE is the term given to Winnebago Industries' structural motor home design and construction. Rather than a single component, it is the culmination of design integration that incorporates steel and aluminum substructures; welded tubular steel floor risers; interlocking joint technology; and Thermo-Panel® floor, roof and sidewalls to form a high-strength, durable vehicle body.

Thermo-Panel manufacturing combines a durable exterior panel with welded aluminum support substructures. The substructures are embedded in a high-density, block-foam insulation core to create a strong, durable, yet lightweight sidewall. Just another Winnebago Industries invention.

- A** Interlocking joint construction utilizes advanced extruded aluminum structural components to create integrated floor-to-sidewall and sidewall-to-roof joints. This design effectively distributes the weight of the walls and roof, making a stronger and more durable body than competitor designs that rely on screws to carry the weight.
- B** The foundation substructure assembly is precision-aligned to maximize strength and cross-coach support as well as durability.
- C** Tubular steel risers feature a truss-design core for improved strength and provide a stable base for the floor structure and storage compartments.
- D** Critical steel components are treated using an advanced electrodeposition coating process that provides superior corrosion protection.



One-year-old Winnebago Industries' fiberglass roof



One-year-old competitor's rubber roof

**BUILT TO A HIGHER STANDARD.**

The Outlook features a crowned, one-piece fiberglass roof skin backed with a 10-year limited parts-and-labor roof skin warranty. Fiberglass offers superior strength, attractiveness and durability compared to rubber roofs found on many competitive models. Over time, rubber roofs are susceptible to chalking, streaking and degradation, and have less puncture and tear resistance than fiberglass.